

Converting Colors

CIELCh(65, 100.974, 17.794)

Have a look what the booklet for
CIELCh(65, 100.974, 17.794)
contains.

CIELCh(54, 84.606, 10.105)	3
<i>Conversions</i>	4
<i>Details</i>	6
<i>Harmonies</i>	11
<i>Previews</i>	20
<i>Color Blindness Simulation</i>	23
<i>CSS Examples</i>	26

Color

CIELCh(54, 84.606, 10.105)

Conversions

Conversions Part 1

Format	Color
Hex	FE006C
RGB	254, 0, 108
RGB Percent	100%, 0%, 42%
CMY	0.0053, 1.0000, 0.5765
CMYK	0.00, 1.00, 0.57, 0.01
HSL	334°, 100%, 50%
HSV	334°, 100%, 99%
XYZ	43.3981, 21.9746, 16.1393
YIQ	88.2580, 116.7160, 87.4360

Conversions

Conversions Part 2

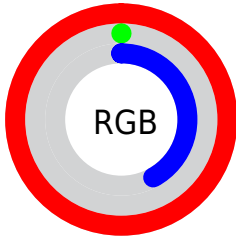
Format	Color
RYB	254, 0, 108
Decimal	16646252
CIELab	54.00, 83.29, 14.84
CIElCh	54, 84.606, 10.105
Yxy	21.9746, 0.5324, 0.2696
Android (android.graphics.Color)	4294836332 (0xFFFE006C)
YUV	88.2580, 9.7328, 145.3557
Hunter-Lab	46.8770, 83.2179, 12.4009

Details

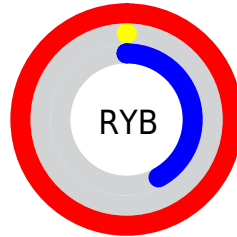
The CIELCh color **54, 84.606, 10.105** is a dark color, and the websafe version is hex **FF0066**. The color can be described as dark saturated rose. A complement of this color would be **88, 82.610, 152.714**, and the grayscale version is **37, 0.005, 296.813**.

A 20% lighter version of the original color is **64, 64.416, 359.110**, and **40, 69.327, 19.128** is the 20% darker color. If you saturate the color by 10%, you get **54, 84.286, 10.260**, and if you desaturate by 10%, it is **55, 82.106, 5.429**.

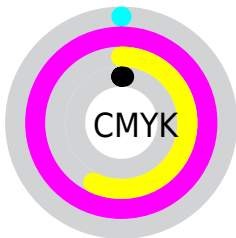
Distribution



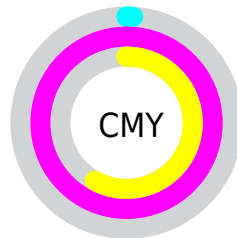
- Red (100%)
- Green (0%)
- Blue (42%)



- Red (100%)
- Yellow (0%)
- Blue (42%)



- Cyan (0%)
- Magenta (100%)
- Yellow (57%)
- Black (1%)



- Cyan (1%)
- Magenta (100%)
- Yellow (58%)

Brightness & Saturation Gradients

These gradients show how the CIELCh color 54, 84.606, 10.105 changes by changing the brightness by 10 percent. The first figure shows a shift by +10% for each color and the second figure -10%.

Similar to the brightness gradients but the following saturation gradients show a change of the CIELCh color 54, 84.606, 10.105 by changing the saturation by 10% instead.

 54, 84.606, 10.105

 54, 84.606, 10.105

 100, 84.606,
10.105

 44, 84.606, 10.105

 74, 84.606, 10.105

 34, 84.606, 10.105

 84, 84.606, 10.105

 24, 84.606, 10.105

 94, 84.606, 10.105

 14, 84.606, 10.105

 4, 84.606, 10.105

 0, 84.606, 10.105

 54, 84.606, 10.105

 54, 84.606, 10.105

 54, 84.286, 10.260

 55, 82.106, 5.429

 57, 78.197, 1.456

60, 72.066,
358.327

64, 63.929,
355.863

69, 54.292,
353.892

74, 43.722,
352.278

80, 32.708,
350.921

87, 21.609,
349.753

93, 10.662,
348.713

Harmonies

Complementary

The Complementary color scheme is a pair of colors which are on the opposite of each other on the color wheel.



54, 84.606, 10.105



88, 82.610, 152.714

Rectangle

The Rectangle color scheme consists of four colors that form a rectangle on the color wheel.



54, 84.606, 10.105



54, 84.606, 60.105



54, 84.606, 190.105



54, 84.606, 240.105

Sweetspot

The Sweet Spot groups the original color and five complimentary colors.



54, 84.286, 10.260



81, 32.848, 350.922



43, 122.741, 313.302



40, 22.456, 351.468



0, 0.000, 0.000



53, 0.007, 296.813

Same Dimension

The Same Dimension uses a secret algorithm to generate beautiful new colors.



54, 84.286, 10.260



54, 84.625, 10.275



53, 103.300, 40.511



50, 6.083, 348.663



41, 68.085, 9.302



10, 31.373, 2.613

Inverse Universe

The Inverse Universe completely reimagines the original color for something new.



54, 84.286, 10.260



54, 84.625, 10.275



86, 45.772, 207.969



50, 6.083, 348.663



41, 68.085, 9.302



10, 31.373, 2.613

Previews

White Background



This preview shows how the CIELCh color 54, 84.606, 10.105 looks on a white background.

Color Contrast Check

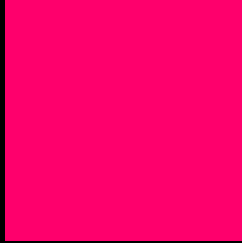
Large Text (above 18pt) WCAG AA ✓ Pass

Any Text WCAG AA ✗ Fail

Large Text (above 18pt) WCAG AAA ✗ Fail

Any Text WCAG AAA ✗ Fail

Black Background



This preview shows how the CIELCh color 54, 84.606, 10.105 looks on a black background.

Color Contrast Check

Large Text (above 18pt) WCAG AA ✓ Pass

Any Text WCAG AA ✓ Pass

Large Text (above 18pt) WCAG AAA ✓ Pass

Any Text WCAG AAA × Fail

If you want to check with other color combinations, try the [Color Contrast Checker](#).

CIELCh 54, 84.606, 10.105

Background



This preview shows how black text looks on a background with the CIELCh color 54, 84.606, 10.105.

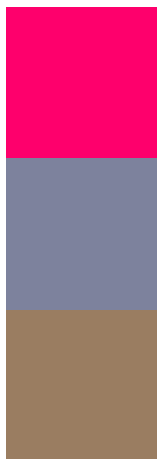


This preview shows how white text looks on a background with the CIELCh color 54, 84.606, 10.105.

Color Blindness Simulation

Color vision deficiency is a very complex topic, and I could not describe the different causes any better than Wikipedia does, so if you want to learn more, you should check out their [article about color blindness](#).

Dichromacy



Original Color

54, 84.378, 10.317

Protanopia

55, 15.591, 285.425

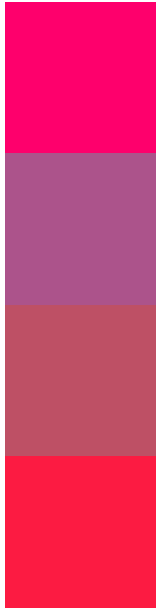
Deuteranopia

54, 20.745, 70.009



Tritanopia
54, 91.334, 35.546

Trichromacy



Original Color
54, 84.378, 10.317

Protanomaly
48, 45.636, 341.794

Deuteranomaly
49, 47.281, 12.738

Tritanomaly
54, 87.621, 26.922

Monochromacy



Original Color
54, 84.378, 10.317

Achromatopsia
37, 0.005, 296.813

Achromatomaly
38, 42.707, 355.975

CSS Examples

Text

The CSS property to change the color of the text to CIELCh 54, 84.606, 10.105 is called "color". The color property can be set on classes, ids or directly on the HTML element.

This example shows how text in the color `rgb(254, 0, 108)` looks like.

```
.text, #text, p{  
    color:rgb(254, 0, 108)  
}
```

If you want to add a text shadow in that color use the text-shadow property, you can generate a text shadow directly with our [CSS Text Shadow Generator](#).

Here you see how black text with a 4 pixel rgb(254, 0, 108) colored shadow looks like.

```
.shadow{ text-shadow: 4px 4px 2px rgb(254, 0, 108) }
```

Border

The CSS property to change the border of an element to CIELCh 54, 84.606, 10.105 is called "border". The border property can be set on classes, ids or directly on the HTML element.

This example shows the color as border, it can be applied via the CSS property "border" or "border-color".

```
.border, #border, table{ border:4px solid rgb(254, 0, 108) }
```

If only the border color should be changed use the property `border-color`.

```
.border{ border-color:rgb(254, 0, 108) }
```

If you want to add a box shadow in that color use:

Here you see how a box with a 4 pixel `rgb(254, 0, 108)` colored shadow looks like.

```
.boxshadow{ -moz-box-shadow:4px 4px 4px  
4px rgb(254, 0, 108); -webkit-box-  
shadow:4px 4px 4px 4px rgb(254, 0, 108);  
box-shadow:4px 4px 4px 4px rgb(254, 0,  
108) }
```

Background

The CSS property to change the background color of an element to CIELCh 54, 84.606, 10.105 is called "background". The background property can be set on classes, ids or directly on the HTML element.

```
.background, #background, body{  
background: rgb(254, 0, 108) }
```

If only the background color should be changed can be used:

```
.background{ background-color: rgb(254, 0,  
108) }
```

This example shows the color as background, it is applied via the CSS property "background".

To optimize and compress your CSS code, you can use our [online CSS compressor and optimizer](#) based on csstidy. If you want to create a linear or radial gradient as background or border, check our [CSS Gradient Generator](#).

Hey! You found this booklet interesting? Support Converting Colors with the new Membership Option!

The pro membership hides all ads, plus gives you double the colors in the color bucket, and more awesome pro features!

[Learn more, Memberships starting at \\$2.50/m!](#)

**Follow me
on Twitter!**

@ConvertingColor