

Converting Colors

CIELCh(65, 12.010, 9.969)

Have a look what the booklet for
CIELCh(65, 12.010, 9.969) contains.

CIELCh(65, 12.010, 9.969)	3
<i>Conversions</i>	4
<i>Details</i>	6
<i>Harmonies</i>	11
<i>Previews</i>	20
<i>Color Blindness Simulation</i>	23
<i>CSS Examples</i>	26

Color

CIELCh(65, 12.010, 9.969)

Conversions

Conversions Part 1

Format	Color
Hex	B4969A
RGB	180, 150, 154
RGB Percent	71%, 59%, 60%
CMY	0.2924, 0.4101, 0.3944
CMYK	0.00, 0.17, 0.14, 0.29
HSL	352°, 17%, 65%
HSV	352°, 17%, 71%
XYZ	35.7626, 34.0472, 35.4404
YIQ	159.4260, 16.5960, 7.6040

Conversions

Conversions Part 2

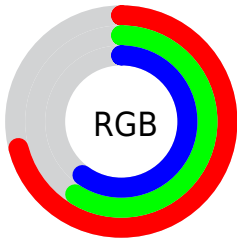
Format	Color
RYB	180, 150, 154
Decimal	11835034
CIELab	65.00, 11.83, 2.08
CIElCh	65, 12.010, 9.969
Yxy	34.0472, 0.3398, 0.3235
Android (android.graphics.Color)	4290025114 (0xFFB4969A)
YUV	159.4260, -2.6750, 18.0434
Hunter-Lab	58.3500, 7.2900, 4.8336

Details

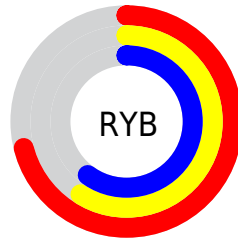
The CIELCh color **65, 12.010, 9.969** is a light color, and the websafe version is hex **CC9999**. A complement of this color would be **71, 11.093, 187.155**, and the grayscale version is **66, 0.008, 296.813**.

A 20% lighter version of the original color is **85, 12.054, 10.314**, and **45, 12.133, 9.772** is the 20% darker color. If you saturate the color by 10%, you get **60, 19.785, 11.176**, and if you desaturate by 10%, it is **70, 4.647, 8.932**.

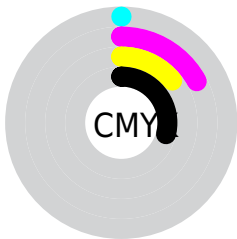
Distribution



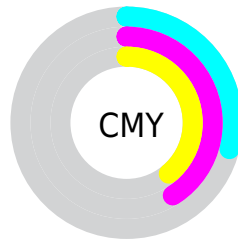
- Red (71%)
- Green (59%)
- Blue (60%)



- Red (71%)
- Yellow (59%)
- Blue (60%)



- Cyan (0%)
- Magenta (17%)
- Yellow (14%)
- Black (29%)




- Cyan (29%)
- Magenta (41%)
- Yellow (39%)

Brightness & Saturation Gradients

These gradients show how the CIELCh color 65, 12.010, 9.969 changes by changing the brightness by 10 percent. The first figure shows a shift by +10% for each color and the second figure -10%.

Similar to the brightness gradients but the following saturation gradients show a change of the CIELCh color 65, 12.010, 9.969 by changing the saturation by 10% instead.

 65, 12.010, 9.969  65, 12.010, 9.969

 100, 12.010, 9.969  55, 12.010, 9.969

 85, 12.010, 9.969  45, 12.010, 9.969

 95, 12.010, 9.969  35, 12.010, 9.969

 25, 12.010, 9.969

 15, 12.010, 9.969

 5, 12.010, 9.969

 0, 12.010, 9.969

 65, 12.010, 9.969  65, 12.010, 9.969

 60, 19.785, 11.176  70, 4.647, 8.932

55, 27.912, 12.639

75, 2.282, 188.428

51, 36.261, 14.462

80, 8.789, 187.566

47, 44.623, 16.763

86, 14.902,
186.934

44, 52.723, 19.679

91, 20.655,
186.390

41, 60.274, 23.324

39, 67.059, 27.697

95, 24.531,
189.712

38, 72.953, 32.474

95, 23.865,
197.946

38, 74.843, 33.905

Harmonies

Complementary

The Complementary color scheme is a pair of colors which are on the opposite of each other on the color wheel.



65, 12.010, 9.969



71, 11.093, 187.155

Rectangle

The Rectangle color scheme consists of four colors that form a rectangle on the color wheel.



65, 12.010, 9.969



65, 12.010, 59.969



65, 12.010, 189.969



65, 12.010, 239.969

Sweetspot

The Sweet Spot groups the original color and five complimentary colors.



65, 12.008, 9.976



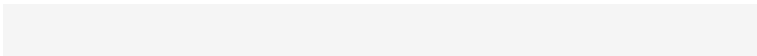
90, 4.316, 8.763



65, 19.303, 321.528



47, 2.948, 8.840



96, 0.011, 296.813



49, 0.007, 296.813

Same Dimension

The Same Dimension uses a secret algorithm to generate beautiful new colors.



65, 12.008, 9.976



80, 18.068, 10.396



68, 9.692, 58.297



35, 3.965, 9.209



31, 65.793, 33.221



2, 9.276, 10.914

Inverse Universe

The Inverse Universe completely reimagines the original color for something new.



65, 12.008, 9.976



80, 18.068, 10.396



68, 8.965, 241.662



35, 3.965, 9.209



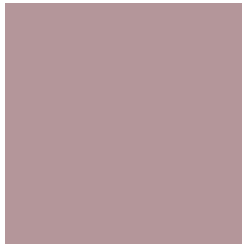
31, 65.793, 33.221



2, 9.276, 10.914

Previews

White Background



This preview shows how the CIELCh color 65, 12.010, 9.969 looks on a white background.

Color Contrast Check

Large Text (above 18pt) WCAG AA × Fail

Any Text WCAG AA × Fail

Large Text (above 18pt) WCAG AAA × Fail

Any Text WCAG AAA × Fail

Black Background



This preview shows how the CIE LCh color 65, 12.010, 9.969 looks on a black background.

Color Contrast Check

Large Text (above 18pt) WCAG AA ✓ Pass

Any Text WCAG AA ✓ Pass

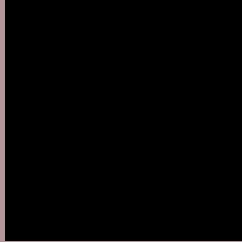
Large Text (above 18pt) WCAG AAA ✓ Pass

Any Text WCAG AAA ✓ Pass

If you want to check with other color combinations, try the [Color Contrast Checker](#).

CIELCh 65, 12.010, 9.969

Background



This preview shows how black text looks on a background with the CIELCh color 65, 12.010, 9.969.



This preview shows how white text looks on a background with the CIELCh color 65, 12.010, 9.969.

Color Blindness Simulation

Color vision deficiency is a very complex topic, and I could not describe the different causes any better than Wikipedia does, so if you want to learn more, you should check out their [article about color blindness](#).

Dichromacy



Original Color

65, 12.010, 9.969

Protanopia

65, 1.285, 353.551

Deuteranopia

65, 8.648, 16.519



Tritanopia
65, 14.063, 352.646

Trichromacy



Original Color
65, 12.010, 9.969

Protanomaly
65, 4.778, 6.365

Deuteranomaly
65, 9.884, 13.906

Tritanomaly
65, 13.052, 358.303

Monochromacy



Original Color
65, 12.010, 9.969

Achromatopsia
66, 0.008, 296.813

Achromatomaly
66, 3.901, 11.507

CSS Examples

Text

The CSS property to change the color of the text to CIELCh 65, 12.010, 9.969 is called "color". The color property can be set on classes, ids or directly on the HTML element.

This example shows how text in the color `rgb(180, 150, 154)` looks like.

```
.text, #text, p{  
    color:rgb(180, 150, 154)  
}
```

If you want to add a text shadow in that color use the text-shadow property, you can generate a text shadow directly with our [CSS Text Shadow Generator](#).

Here you see how black text with a 4 pixel rgb(180, 150, 154) colored shadow looks like.

```
.shadow{ text-shadow: 4px 4px 2px rgb(180, 150, 154) }
```

Border

The CSS property to change the border of an element to CIELCh 65, 12.010, 9.969 is called "border". The border property can be set on classes, ids or directly on the HTML element.

This example shows the color as border, it can be applied via the CSS property "border" or "border-color".

```
.border, #border, table{ border:4px solid rgb(180, 150, 154) }
```

If only the border color should be changed use the property `border-color`.

```
.border{ border-color:rgb(180, 150, 154) }
```

If you want to add a box shadow in that color use:

Here you see how a box with a 4 pixel `rgb(180, 150, 154)` colored shadow looks like.

```
.boxshadow{ -moz-box-shadow:4px 4px 4px  
4px rgb(180, 150, 154); -webkit-box-  
shadow:4px 4px 4px 4px rgb(180, 150, 154);  
box-shadow:4px 4px 4px 4px rgb(180, 150,  
154) }
```

Background

The CSS property to change the background color of an element to CIELCh 65, 12.010, 9.969 is called "background". The background property can be set on classes, ids or directly on the HTML element.

```
.background, #background, body{  
background: rgb(180, 150, 154) }
```

If only the background color should be changed can be used:

```
.background{ background-color: rgb(180,  
150, 154) }
```

This example shows the color as background, it is applied via the CSS property "background".

To optimize and compress your CSS code, you can use our [online CSS compressor and optimizer](#) based on csstidy. If you want to create a linear or radial gradient as background or border, check our [CSS Gradient Generator](#).

Hey! You found this booklet interesting? Support Converting Colors with the new Membership Option!

The pro membership hides all ads, plus gives you double the colors in the color bucket, and more awesome pro features!

[Learn more, Memberships starting at \\$2.50/m!](#)

**Follow me
on Twitter!**

@ConvertingColor