

Converting Colors

CIELCh(65, 12.578, 5.377)

Have a look what the booklet for
CIELCh(65, 12.578, 5.377) contains.

CIELCh(65, 12.593, 5.387)	3
<i>Conversions</i>	4
<i>Details</i>	6
<i>Harmonies</i>	11
<i>Previews</i>	20
<i>Color Blindness Simulation</i>	23
<i>CSS Examples</i>	26

Color

CIELCh(65, 12.593, 5.387)

Conversions

Conversions Part 1

Format	Color
Hex	B5969C
RGB	181, 150, 156
RGB Percent	71%, 59%, 61%
CMY	0.2901, 0.4117, 0.3881
CMYK	0.00, 0.17, 0.14, 0.29
HSL	348°, 17%, 65%
HSV	348°, 17%, 71%
XYZ	35.9737, 34.0472, 36.1380
YIQ	159.9530, 16.5500, 8.4380

Conversions

Conversions Part 2

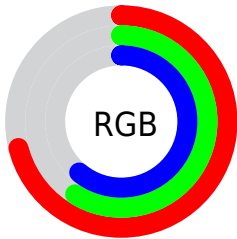
Format	Color
RYB	181, 150, 156
Decimal	11900572
CIELab	65.00, 12.54, 1.18
CIElCh	65, 12.593, 5.387
Yxy	34.0472, 0.3389, 0.3207
Android (android.graphics.Color)	4290090652 (0xFFB5969C)
YUV	159.9530, -1.9488, 18.4582
Hunter-Lab	58.3500, 7.9357, 4.1247

Details

The CIELCh color **65, 12.593, 5.387** is a light color, and the websafe version is hex **CC9999**. A complement of this color would be **71, 11.751, 182.267**, and the grayscale version is **66, 0.008, 296.813**.

A 20% lighter version of the original color is **85, 12.605, 5.948**, and **45, 12.751, 4.963** is the 20% darker color. If you saturate the color by 10%, you get **60, 20.430, 6.638**, and if you desaturate by 10%, it is **70, 5.103, 4.303**.

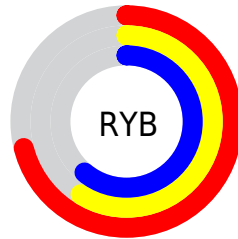
Distribution



Red (71%)

Green (59%)

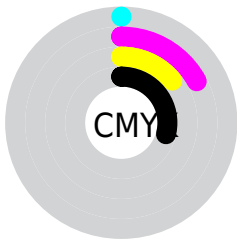
Blue (61%)



Red (71%)

Yellow (59%)

Blue (61%)

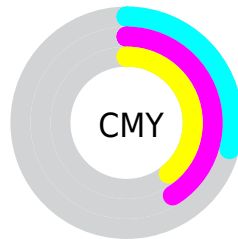


Cyan (0%)

Magenta (17%)

Yellow (14%)

Black (29%)



Cyan (29%)

Magenta (41%)

Yellow (39%)

Brightness & Saturation Gradients

These gradients show how the CIELCh color 65, 12.593, 5.387 changes by changing the brightness by 10 percent. The first figure shows a shift by +10% for each color and the second figure -10%.

Similar to the brightness gradients but the following saturation gradients show a change of the CIELCh color 65, 12.593, 5.387 by changing the saturation by 10% instead.

 65, 12.593, 5.387  65, 12.593, 5.387

 100, 12.593, 5.387  55, 12.593, 5.387

 85, 12.593, 5.387  45, 12.593, 5.387

 95, 12.593, 5.387  35, 12.593, 5.387

 25, 12.593, 5.387

 15, 12.593, 5.387

 5, 12.593, 5.387

 0, 12.593, 5.387

 65, 12.593, 5.387  65, 12.593, 5.387

 60, 20.430, 6.638  70, 5.103, 4.303

55, 28.534, 8.136

75, 2.000, 183.750

51, 36.748, 9.980

80, 8.715, 182.799

47, 44.835, 12.288

86, 15.061,
182.101

44, 52.493, 15.205

91, 21.063,
181.493

41, 59.422, 18.873

39, 65.442, 23.360

95, 25.077,
184.293

38, 70.617, 28.466

95, 23.697,
197.956

38, 72.105, 29.852

Harmonies

Complementary

The Complementary color scheme is a pair of colors which are on the opposite of each other on the color wheel.



65, 12.593, 5.387



71, 11.751, 182.267

Rectangle

The Rectangle color scheme consists of four colors that form a rectangle on the color wheel.



65, 12.593, 5.387



65, 12.593, 55.387



65, 12.593, 185.387



65, 12.593, 235.387

Sweetspot

The Sweet Spot groups the original color and five complimentary colors.



65, 12.591, 5.393



90, 4.399, 4.074



65, 19.572, 319.553



47, 3.004, 4.154



96, 0.011, 296.813



49, 0.007, 296.813

Same Dimension

The Same Dimension uses a secret algorithm to generate beautiful new colors.



65, 12.591, 5.393



80, 19.266, 5.894



67, 10.059, 50.444



35, 4.034, 4.538



31, 63.257, 29.066



2, 9.396, 7.181

Inverse Universe

The Inverse Universe completely reimagines the original color for something new.



65, 12.591, 5.393



80, 19.266, 5.894



69, 9.141, 233.009



35, 4.034, 4.538



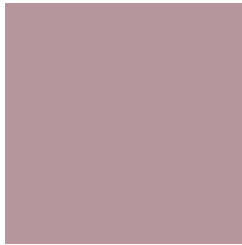
31, 63.257, 29.066



2, 9.396, 7.181

Previews

White Background



This preview shows how the CIELCh color 65, 12.593, 5.387 looks on a white background.

Color Contrast Check

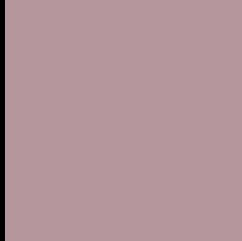
Large Text (above 18pt) WCAG AA × Fail

Any Text WCAG AA × Fail

Large Text (above 18pt) WCAG AAA × Fail

Any Text WCAG AAA × Fail

Black Background



This preview shows how the CIELCh color 65, 12.593, 5.387 looks on a black background.

Color Contrast Check

Large Text (above 18pt) WCAG AA ✓ Pass

Any Text WCAG AA ✓ Pass

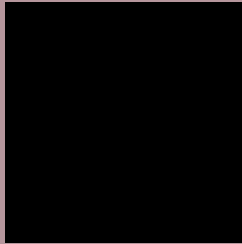
Large Text (above 18pt) WCAG AAA ✓ Pass

Any Text WCAG AAA ✓ Pass

If you want to check with other color combinations, try the [Color Contrast Checker](#).

CIELCh 65, 12.593, 5.387

Background



This preview shows how black text looks on a background with the CIELCh color 65, 12.593, 5.387.



This preview shows how white text looks on a background with the CIELCh color 65, 12.593, 5.387.

Color Blindness Simulation

Color vision deficiency is a very complex topic, and I could not describe the different causes any better than Wikipedia does, so if you want to learn more, you should check out their [article about color blindness](#).

Dichromacy



Original Color

65, 12.593, 5.387

Protanopia

65, 2.038, 324.435

Deuteranopia

65, 8.287, 12.489



Tritanopia
65, 14.410, 353.435

Trichromacy



Original Color
65, 12.593, 5.387

Protanomaly
65, 6.083, 352.817

Deuteranomaly
65, 9.939, 10.739

Tritanomaly
65, 13.986, 357.530

Monochromacy



Original Color
65, 12.593, 5.387

Achromatopsia
66, 0.008, 296.813

Achromatomaly
65, 4.925, 0.089

CSS Examples

Text

The CSS property to change the color of the text to CIELCh 65, 12.593, 5.387 is called "color". The color property can be set on classes, ids or directly on the HTML element.

This example shows how text in the color `rgb(181, 150, 156)` looks like.

```
.text, #text, p{  
    color:rgb(181, 150, 156)  
}
```

If you want to add a text shadow in that color use the text-shadow property, you can generate a text shadow directly with our [CSS Text Shadow Generator](#).

Here you see how black text with a 4 pixel rgb(181, 150, 156) colored shadow looks like.

```
.shadow{ text-shadow: 4px 4px 2px rgb(181, 150, 156) }
```

Border

The CSS property to change the border of an element to CIELCh 65, 12.593, 5.387 is called "border". The border property can be set on classes, ids or directly on the HTML element.

This example shows the color as border, it can be applied via the CSS property "border" or "border-color".

```
.border, #border, table{ border:4px solid rgb(181, 150, 156) }
```

If only the border color should be changed use the property `border-color`.

```
.border{ border-color:rgb(181, 150, 156) }
```

If you want to add a box shadow in that color use:

Here you see how a box with a 4 pixel `rgb(181, 150, 156)` colored shadow looks like.

```
.boxshadow{ -moz-box-shadow:4px 4px 4px  
4px rgb(181, 150, 156); -webkit-box-  
shadow:4px 4px 4px 4px rgb(181, 150, 156);  
box-shadow:4px 4px 4px 4px rgb(181, 150,  
156) }
```

Background

The CSS property to change the background color of an element to CIELCh 65, 12.593, 5.387 is called "background". The background property can be set on classes, ids or directly on the HTML element.

```
.background, #background, body{  
background: rgb(181, 150, 156) }
```

If only the background color should be changed can be used:

```
.background{ background-color: rgb(181,  
150, 156) }
```

This example shows the color as background, it is applied via the CSS property "background".

To optimize and compress your CSS code, you can use our [online CSS compressor and optimizer](#) based on csstidy. If you want to create a linear or radial gradient as background or border, check our [CSS Gradient Generator](#).

Hey! You found this booklet interesting? Support Converting Colors with the new Membership Option!

The pro membership hides all ads, plus gives you double the colors in the color bucket, and more awesome pro features!

[Learn more, Memberships starting at \\$2.50/m!](#)

**Follow me
on Twitter!**

@ConvertingColor