

Converting Colors

CIELCh(65, 13.925, 20.824)

Have a look what the booklet for
CIELCh(65, 13.925, 20.824) contains.

CIELCh(65, 13.985, 20.723)	3
<i>Conversions</i>	4
<i>Details</i>	6
<i>Harmonies</i>	11
<i>Previews</i>	20
<i>Color Blindness Simulation</i>	23
<i>CSS Examples</i>	26

Color

CIELCh(65, 13.985, 20.723)

Conversions

Conversions Part 1

Format	Color
Hex	B89595
RGB	184, 149, 149
RGB Percent	72%, 58%, 58%
CMY	0.2768, 0.4141, 0.4141
CMYK	0.00, 0.19, 0.19, 0.28
HSL	0°, 20%, 65%
HSV	0°, 19%, 72%
XYZ	36.1359, 34.0472, 33.2687
YIQ	159.4650, 20.8600, 7.4200

Conversions

Conversions Part 2

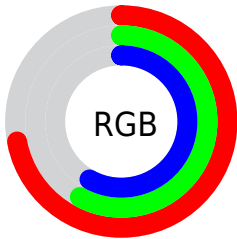
Format	Color
RYB	184, 149, 149
Decimal	12096917
CIELab	65.00, 13.08, 4.95
CIELCh	65, 13.985, 20.723
Yxy	34.0472, 0.3493, 0.3291
Android (android.graphics.Color)	4290286997 (0xFFB89595)
YUV	159.4650, -5.1592, 21.5172
Hunter-Lab	58.3500, 8.4319, 7.0402

Details

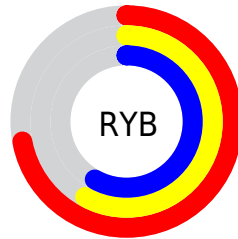
The CIELCh color $65, 13.985, 20.723$ is a light color, and the websafe version is hex `CC9999`. A complement of this color would be $72, 12.365, 198.468$, and the grayscale version is $66, 0.008, 296.813$.

A 20% lighter version of the original color is $85, 13.884, 20.428$, and $45, 13.885, 21.198$ is the 20% darker color. If you saturate the color by 10%, you get $60, 22.174, 21.765$, and if you desaturate by 10%, it is $70, 6.366, 19.899$.

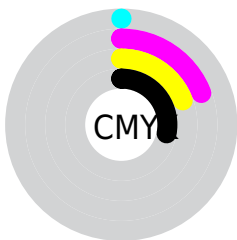
Distribution



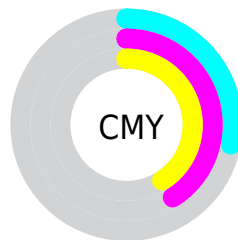
- Red (72%)
- Green (58%)
- Blue (58%)



- Red (72%)
- Yellow (58%)
- Blue (58%)



- Cyan (0%)
- Magenta (19%)
- Yellow (19%)
- Black (28%)



- Cyan (28%)
- Magenta (41%)
- Yellow (41%)

Brightness & Saturation Gradients

These gradients show how the CIELCh color 65, 13.985, 20.723 changes by changing the brightness by 10 percent. The first figure shows a shift by +10% for each color and the second figure -10%.

Similar to the brightness gradients but the following saturation gradients show a change of the CIELCh color 65, 13.985, 20.723 by changing the saturation by 10% instead.

65, 13.985, 20.723

65, 13.985, 20.723

100, 13.985,
20.723

55, 13.985, 20.723

85, 13.985, 20.723

45, 13.985, 20.723

95, 13.985, 20.723

35, 13.985, 20.723

25, 13.985, 20.723

15, 13.985, 20.723

5, 13.985, 20.723

0, 13.985, 20.723

65, 13.985, 20.723

65, 13.985, 20.723

60, 22.174, 21.765

70, 6.366, 19.899

■ 55, 30.903, 23.104

■ 75, 0.687, 200.123

■ 51, 40.066, 24.848

■ 81, 7.213, 198.957

■ 47, 49.471, 27.105

■ 86, 13.260,
198.540

■ 43, 58.838, 29.955

■ 92, 18.880,
198.220

■ 41, 67.774, 33.342

■ 39, 75.589, 36.846

■ 96, 22.725,
198.017

■ 38, 81.365, 39.691

■ 38, 81.975, 39.998

Harmonies

Complementary

The Complementary color scheme is a pair of colors which are on the opposite of each other on the color wheel.



65, 13.985, 20.723



72, 12.365, 198.468

Rectangle

The Rectangle color scheme consists of four colors that form a rectangle on the color wheel.



65, 13.985, 20.723



65, 13.985, 70.723



65, 13.985, 200.723



65, 13.985, 250.723

Sweetspot

The Sweet Spot groups the original color and five complimentary colors.



65, 13.983, 20.731



91, 5.199, 19.666



66, 23.334, 325.461



48, 3.455, 19.719



97, 0.011, 296.813



50, 0.007, 296.813

Same Dimension

The Same Dimension uses a secret algorithm to generate beautiful new colors.



65, 13.983, 20.731



80, 21.315, 21.154



69, 11.872, 73.083



36, 4.003, 19.926



32, 71.869, 39.601



2, 10.637, 19.413

Inverse Universe

The Inverse Universe completely reimagines the original color for something new.



72, 12.365, 198.468



91, 18.271, 198.253



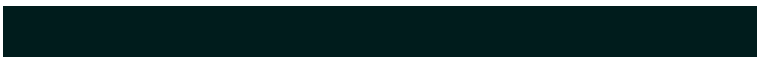
68, 11.302, 258.105



38, 3.777, 198.996



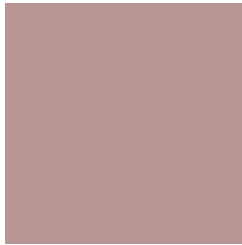
58, 34.637, 196.406



8, 10.516, 197.755

Previews

White Background



This preview shows how the CIELCh color 65, 13.985, 20.723 looks on a white background.

Color Contrast Check

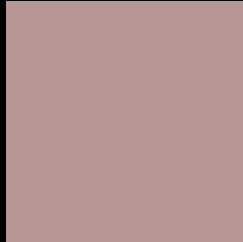
Large Text (above 18pt) WCAG AA × Fail

Any Text WCAG AA × Fail

Large Text (above 18pt) WCAG AAA × Fail

Any Text WCAG AAA × Fail

Black Background



This preview shows how the CIELCh color 65, 13.985, 20.723 looks on a black background.

Color Contrast Check

Large Text (above 18pt) WCAG AA ✓ Pass

Any Text WCAG AA ✓ Pass

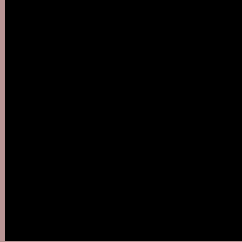
Large Text (above 18pt) WCAG AAA ✓ Pass

Any Text WCAG AAA ✓ Pass

If you want to check with other color combinations, try the [Color Contrast Checker](#).

CIELCh 65, 13.985, 20.723

Background



This preview shows how black text looks on a background with the CIELCh color 65, 13.985, 20.723.



This preview shows how white text looks on a background with the CIELCh color 65, 13.985, 20.723.

Color Blindness Simulation

Color vision deficiency is a very complex topic, and I could not describe the different causes any better than Wikipedia does, so if you want to learn more, you should check out their [article about color blindness](#).

Dichromacy



Original Color

65, 13.985, 20.723

Protanopia

65, 2.537, 60.239

Deuteranopia

65, 9.805, 33.200



Tritanopia
65, 16.013, 358.753

Trichromacy



Original Color
65, 13.985, 20.723

Protanomaly
65, 6.371, 29.890

Deuteranomaly
65, 11.293, 28.795

Tritanomaly
65, 14.656, 5.596

Monochromacy



Original Color
65, 13.985, 20.723

Achromatopsia
66, 0.008, 296.813

Achromatomaly
65, 5.048, 19.781

CSS Examples

Text

The CSS property to change the color of the text to CIELCh 65, 13.985, 20.723 is called "color". The color property can be set on classes, ids or directly on the HTML element.

This example shows how text in the color `rgb(184, 149, 149)` looks like.

```
.text, #text, p{  
    color:rgb(184, 149, 149)  
}
```

If you want to add a text shadow in that color use the text-shadow property, you can generate a text shadow directly with our [CSS Text Shadow Generator](#).

Here you see how black text with a 4 pixel rgb(184, 149, 149) colored shadow looks like.

```
.shadow{ text-shadow: 4px 4px 2px rgb(184, 149, 149) }
```

Border

The CSS property to change the border of an element to CIELCh 65, 13.985, 20.723 is called "border". The border property can be set on classes, ids or directly on the HTML element.

This example shows the color as border, it can be applied via the CSS property "border" or "border-color".

```
.border, #border, table{ border:4px solid rgb(184, 149, 149) }
```

If only the border color should be changed use the property `border-color`.

```
.border{ border-color:rgb(184, 149, 149) }
```

If you want to add a box shadow in that color use:

Here you see how a box with a 4 pixel `rgb(184, 149, 149)` colored shadow looks like.

```
.boxshadow{ -moz-box-shadow:4px 4px 4px  
4px rgb(184, 149, 149); -webkit-box-  
shadow:4px 4px 4px 4px rgb(184, 149, 149);  
box-shadow:4px 4px 4px 4px rgb(184, 149,  
149) }
```

Background

The CSS property to change the background color of an element to CIELCh 65, 13.985, 20.723 is called "background". The background property can be set on classes, ids or directly on the HTML element.

```
.background, #background, body{  
background: rgb(184, 149, 149) }
```

If only the background color should be changed can be used:

```
.background{ background-color: rgb(184,  
149, 149) }
```

This example shows the color as background, it is applied via the CSS property "background".

To optimize and compress your CSS code, you can use our [online CSS compressor and optimizer](#) based on csstidy. If you want to create a linear or radial gradient as background or border, check our [CSS Gradient Generator](#).

Hey! You found this booklet interesting? Support Converting Colors with the new Membership Option!

The pro membership hides all ads, plus gives you double the colors in the color bucket, and more awesome pro features!

[Learn more, Memberships starting at \\$2.50/m!](#)

**Follow me
on Twitter!**

@ConvertingColor