

Converting Colors

CIELCh(65, 18.696, 50.996)

Have a look what the booklet for
CIELCh(65, 18.696, 50.996) contains.

CIELCh(65, 18.859, 52.159)	3
<i>Conversions</i>	4
<i>Details</i>	6
<i>Harmonies</i>	11
<i>Previews</i>	20
<i>Color Blindness Simulation</i>	23
<i>CSS Examples</i>	26

Color

CIELCh(65, 18.859, 52.159)

Conversions

Conversions Part 1

Format	Color
Hex	BC9684
RGB	188, 150, 132
RGB Percent	74%, 59%, 52%
CMY	0.2638, 0.4127, 0.4833
CMYK	0.00, 0.20, 0.30, 0.26
HSL	19°, 29%, 63%
HSV	19°, 30%, 74%
XYZ	35.6856, 34.0472, 26.4312
YIQ	159.3100, 28.4260, 2.4580

Conversions

Conversions Part 2

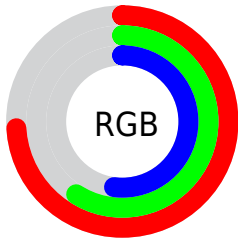
Format	Color
R _Y B	188, 159, 132
Decimal	12359300
CIE Lab	65.00, 11.57, 14.89
CIE LCh	65, 18.859, 52.159
Yxy	34.0472, 0.3711, 0.3541
Android (android.graphics.Color)	4290549380 (0xFFBC9684)
YUV	159.3100, -13.4638, 25.1611
Hunter-Lab	58.3500, 7.0545, 13.9880

Details

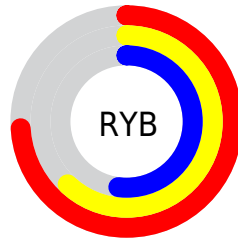
The CIELCh color **65, 18.859, 52.159** is a light color, and the websafe version is hex **CC9999**. A complement of this color would be **67, 15.913, 237.444**, and the grayscale version is **66, 0.008, 296.813**.

A 20% lighter version of the original color is **85, 18.891, 51.912**, and **45, 18.817, 50.939** is the 20% darker color. If you saturate the color by 10%, you get **61, 26.151, 51.628**, and if you desaturate by 10%, it is **69, 12.075, 52.780**.

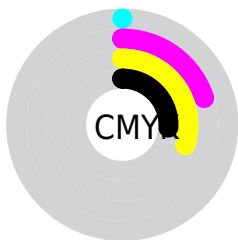
Distribution



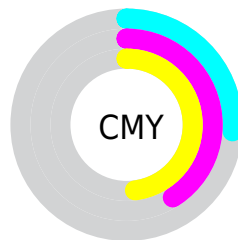
- Red (74%)
- Green (59%)
- Blue (52%)



- Red (74%)
- Yellow (62%)
- Blue (52%)



- Cyan (0%)
- Magenta (20%)
- Yellow (30%)
- Black (26%)



- Cyan (26%)
- Magenta (41%)
- Yellow (48%)

Brightness & Saturation Gradients

These gradients show how the CIELCh color 65, 18.859, 52.159 changes by changing the brightness by 10 percent. The first figure shows a shift by +10% for each color and the second figure -10%.

Similar to the brightness gradients but the following saturation gradients show a change of the CIELCh color 65, 18.859, 52.159 by changing the saturation by 10% instead.

65, 18.859, 52.159

65, 18.859, 52.159

100, 18.859,
52.159

55, 18.859, 52.159

85, 18.859, 52.159

45, 18.859, 52.159

95, 18.859, 52.159

35, 18.859, 52.159

25, 18.859, 52.159

15, 18.859, 52.159

5, 18.859, 52.159

0, 18.859, 52.159

65, 18.859, 52.159

65, 18.859, 52.159

61, 26.151, 51.628

69, 12.075, 52.780

58, 33.962, 51.184

72, 5.767, 53.428

55, 42.255, 50.839

76, 0.108, 238.626

52, 50.902, 50.562

80, 5.594, 235.091

49, 59.576, 50.240

84, 10.737,
235.828

46, 67.562, 49.587

88, 15.578,
236.594

44, 74.145, 48.472

91, 18.241,
225.831

44, 74.269, 48.462

95, 20.690,
202.963

96, 21.766,
198.077

Harmonies

Complementary

The Complementary color scheme is a pair of colors which are on the opposite of each other on the color wheel.



65, 18.859, 52.159



67, 15.913, 237.444

Rectangle

The Rectangle color scheme consists of four colors that form a rectangle on the color wheel.



65, 18.859, 52.159



65, 18.859, 102.159



65, 18.859, 232.159



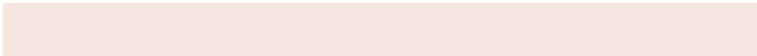
65, 18.859, 282.159

Sweetspot

The Sweet Spot groups the original color and five complimentary colors.



65, 18.858, 52.167



92, 6.542, 53.470



62, 29.902, 337.148



48, 4.569, 53.378



98, 0.011, 296.813



51, 0.007, 296.813

Same Dimension

The Same Dimension uses a secret algorithm to generate beautiful new colors.



65, 18.858, 52.167



80, 28.977, 51.792



72, 24.991, 97.984



38, 3.337, 53.457



37, 65.095, 48.922



5, 10.267, 42.130

Inverse Universe

The Inverse Universe completely reimagines the original color for something new.



67, 15.913, 237.444



83, 23.375, 238.516



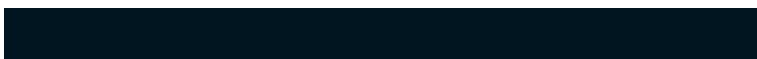
60, 25.969, 285.505



38, 3.183, 235.096



43, 35.271, 259.351



6, 9.804, 248.523

Previews

White Background



This preview shows how the CIELCh color 65, 18.859, 52.159 looks on a white background.

Color Contrast Check

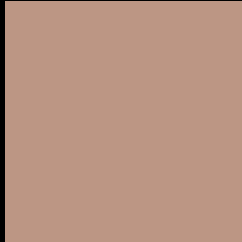
Large Text (above 18pt) WCAG AA × Fail

Any Text WCAG AA × Fail

Large Text (above 18pt) WCAG AAA × Fail

Any Text WCAG AAA × Fail

Black Background



This preview shows how the CIELCh color 65, 18.859, 52.159 looks on a black background.

Color Contrast Check

Large Text (above 18pt) WCAG AA ✓ Pass

Any Text WCAG AA ✓ Pass

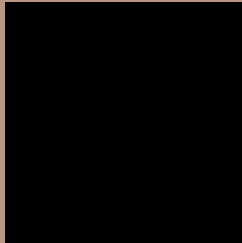
Large Text (above 18pt) WCAG AAA ✓ Pass

Any Text WCAG AAA ✓ Pass

If you want to check with other color combinations, try the [Color Contrast Checker](#).

CIELCh 65, 18.859, 52.159

Background



This preview shows how black text looks on a background with the CIELCh color 65, 18.859, 52.159.



This preview shows how white text looks on a background with the CIELCh color 65, 18.859, 52.159.

Color Blindness Simulation

Color vision deficiency is a very complex topic, and I could not describe the different causes any better than Wikipedia does, so if you want to learn more, you should check out their [article about color blindness](#).

Dichromacy



Original Color

65, 18.859, 52.159

Protanopia

65, 12.577, 93.936

Deuteranopia

65, 17.490, 61.484



Tritanopia
65, 18.664, 2.386

Trichromacy



Original Color
65, 18.859, 52.159

Protanomaly
65, 14.035, 75.200

Deuteranomaly
65, 18.124, 57.667

Tritanomaly
65, 17.282, 19.262

Monochromacy



Original Color
65, 18.859, 52.159

Achromatopsia
65, 0.008, 296.813

Achromatomaly
65, 6.423, 56.714

CSS Examples

Text

The CSS property to change the color of the text to CIELCh 65, 18.859, 52.159 is called "color". The color property can be set on classes, ids or directly on the HTML element.

This example shows how text in the color `rgb(188, 150, 132)` looks like.

```
.text, #text, p{  
    color:rgb(188, 150, 132)  
}
```

If you want to add a text shadow in that color use the text-shadow property, you can generate a text shadow directly with our [CSS Text Shadow Generator](#).

Here you see how black text with a 4 pixel rgb(188, 150, 132) colored shadow looks like.

```
.shadow{ text-shadow: 4px 4px 2px rgb(188, 150, 132) }
```

Border

The CSS property to change the border of an element to CIELCh 65, 18.859, 52.159 is called "border". The border property can be set on classes, ids or directly on the HTML element.

This example shows the color as border, it can be applied via the CSS property "border" or "border-color".

```
.border, #border, table{ border:4px solid rgb(188, 150, 132) }
```

If only the border color should be changed use the property `border-color`.

```
.border{ border-color:rgb(188, 150, 132) }
```

If you want to add a box shadow in that color use:

Here you see how a box with a 4 pixel `rgb(188, 150, 132)` colored shadow looks like.

```
.boxshadow{ -moz-box-shadow:4px 4px 4px  
4px rgb(188, 150, 132); -webkit-box-  
shadow:4px 4px 4px 4px rgb(188, 150, 132);  
box-shadow:4px 4px 4px 4px rgb(188, 150,  
132) }
```

Background

The CSS property to change the background color of an element to CIELCh 65, 18.859, 52.159 is called "background". The background property can be set on classes, ids or directly on the HTML element.

```
.background, #background, body{  
background: rgb(188, 150, 132) }
```

If only the background color should be changed can be used:

```
.background{ background-color: rgb(188,  
150, 132) }
```

This example shows the color as background, it is applied via the CSS property "background".

To optimize and compress your CSS code, you can use our [online CSS compressor and optimizer](#) based on csstidy. If you want to create a linear or radial gradient as background or border, check our [CSS Gradient Generator](#).

Hey! You found this booklet interesting? Support Converting Colors with the new Membership Option!

The pro membership hides all ads, plus gives you double the colors in the color bucket, and more awesome pro features!

[Learn more, Memberships starting at \\$2.50/m!](#)

**Follow me
on Twitter!**

@ConvertingColor