

Converting Colors

CIELCh(65, 19.031, 53.468)

Have a look what the booklet for
CIELCh(65, 19.031, 53.468) contains.

CIELCh(65, 19.198, 53.448)	3
<i>Conversions</i>	4
<i>Details</i>	6
<i>Harmonies</i>	11
<i>Previews</i>	20
<i>Color Blindness Simulation</i>	23
<i>CSS Examples</i>	26

Color

CIELCh(65, 19.198, 53.448)

Conversions

Conversions Part 1

Format	Color
Hex	BC9683
RGB	188, 150, 131
RGB Percent	74%, 59%, 51%
CMY	0.2636, 0.4125, 0.4870
CMYK	0.00, 0.20, 0.30, 0.26
HSL	20°, 30%, 62%
HSV	20°, 30%, 74%
XYZ	35.6453, 34.0472, 26.0965
YIQ	159.1960, 28.7470, 2.1470

Conversions

Conversions Part 2

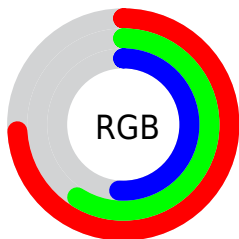
Format	Color
RYB	188, 160, 131
Decimal	12359299
CIELab	65.00, 11.43, 15.42
CIElCh	65, 19.198, 53.448
Yxy	34.0472, 0.3721, 0.3554
Android (android.graphics.Color)	4290549379 (0xFFBC9683)
YUV	159.1960, -13.9006, 25.2611
Hunter-Lab	58.3500, 6.9311, 14.3281

Details

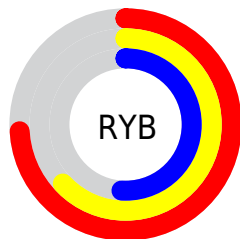
The CIELCh color **65, 19.198, 53.448** is a light color, and the websafe version is hex **CC9999**. A complement of this color would be **67, 16.225, 239.158**, and the grayscale version is **66, 0.008, 296.813**.

A 20% lighter version of the original color is **85, 19.203, 53.156**, and **45, 19.181, 52.309** is the 20% darker color. If you saturate the color by 10%, you get **61, 26.487, 52.855**, and if you desaturate by 10%, it is **69, 12.407, 54.125**.

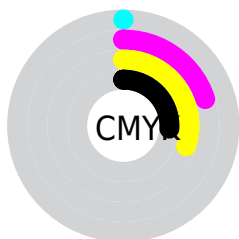
Distribution



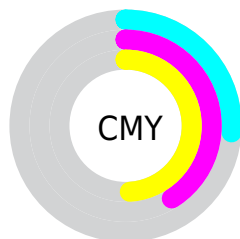
- Red (74%)
- Green (59%)
- Blue (51%)



- Red (74%)
- Yellow (63%)
- Blue (51%)



- Cyan (0%)
- Magenta (20%)
- Yellow (30%)
- Black (26%)



- Cyan (26%)
- Magenta (41%)
- Yellow (49%)

Brightness & Saturation Gradients

These gradients show how the CIELCh color 65, 19.198, 53.448 changes by changing the brightness by 10 percent. The first figure shows a shift by +10% for each color and the second figure -10%.

Similar to the brightness gradients but the following saturation gradients show a change of the CIELCh color 65, 19.198, 53.448 by changing the saturation by 10% instead.

■ 65, 19.198, 53.448

■ 65, 19.198, 53.448

■ 100, 19.198,
53.448

■ 55, 19.198, 53.448

■ 85, 19.198, 53.448

■ 45, 19.198, 53.448

■ 95, 19.198, 53.448

■ 35, 19.198, 53.448

■ 25, 19.198, 53.448

■ 15, 19.198, 53.448

■ 5, 19.198, 53.448

■ 0, 19.198, 53.448

■ 65, 19.198, 53.448

■ 65, 19.198, 53.448

■ 61, 26.487, 52.855

■ 69, 12.407, 54.125

58, 34.284, 52.341

72, 6.086, 54.827

55, 42.549, 51.914

76, 0.192, 53.257

52, 51.143, 51.539

80, 5.321, 236.575

49, 59.725, 51.096

84, 10.494,
237.347

47, 67.554, 50.290

87, 15.370,
238.149

44, 73.803, 49.092

91, 18.147,
228.834

94, 20.185,
205.642

96, 21.748,
198.078

Harmonies

Complementary

The Complementary color scheme is a pair of colors which are on the opposite of each other on the color wheel.



65, 19.198, 53.448



67, 16.225, 239.158

Rectangle

The Rectangle color scheme consists of four colors that form a rectangle on the color wheel.



65, 19.198, 53.448



65, 19.198, 103.448



65, 19.198, 233.448



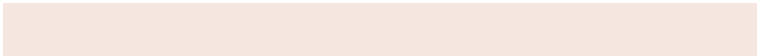
65, 19.198, 283.448

Sweetspot

The Sweet Spot groups the original color and five complimentary colors.



65, 19.197, 53.456



92, 6.539, 54.908



61, 30.093, 337.937



48, 4.566, 54.809



98, 0.011, 296.813



51, 0.007, 296.813

Same Dimension

The Same Dimension uses a secret algorithm to generate beautiful new colors.



65, 19.197, 53.456



80, 28.910, 53.071



72, 25.848, 98.924



38, 3.336, 54.894



37, 64.674, 49.562



5, 10.231, 43.112

Inverse Universe

The Inverse Universe completely reimagines the original color for something new.



67, 16.225, 239.158



83, 23.468, 240.190



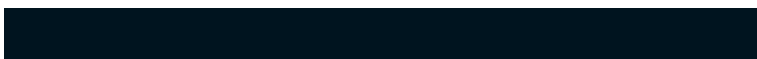
59, 26.988, 286.493



38, 3.187, 236.618



42, 36.001, 261.414



6, 9.887, 250.216

Previews

White Background



This preview shows how the CIELCh color 65, 19.198, 53.448 looks on a white background.

Color Contrast Check

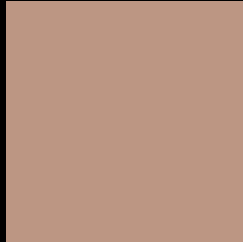
Large Text (above 18pt) WCAG AA × Fail

Any Text WCAG AA × Fail

Large Text (above 18pt) WCAG AAA × Fail

Any Text WCAG AAA × Fail

Black Background



This preview shows how the CIELCh color 65, 19.198, 53.448 looks on a black background.

Color Contrast Check

Large Text (above 18pt) WCAG AA ✓ Pass

Any Text WCAG AA ✓ Pass

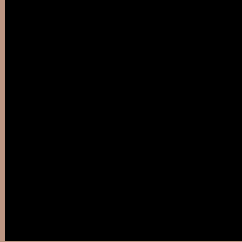
Large Text (above 18pt) WCAG AAA ✓ Pass

Any Text WCAG AAA ✓ Pass

If you want to check with other color combinations, try the [Color Contrast Checker](#).

CIELCh 65, 19.198, 53.448

Background



This preview shows how black text looks on a background with the CIELCh color 65, 19.198, 53.448.



This preview shows how white text looks on a background with the CIELCh color 65, 19.198, 53.448.

Color Blindness Simulation

Color vision deficiency is a very complex topic, and I could not describe the different causes any better than Wikipedia does, so if you want to learn more, you should check out their [article about color blindness](#).

Dichromacy



Original Color

65, 19.198, 53.448

Protanopia

65, 13.112, 94.468

Deuteranopia

65, 17.891, 62.682



Tritanopia
65, 18.664, 2.386

Trichromacy



Original Color
65, 19.198, 53.448

Protanomaly
65, 14.509, 76.302

Deuteranomaly
65, 18.501, 58.901

Tritanomaly
65, 17.322, 21.073

Monochromacy



Original Color
65, 19.198, 53.448

Achromatopsia
65, 0.008, 296.813

Achromatomaly
65, 6.423, 56.714

CSS Examples

Text

The CSS property to change the color of the text to CIELCh 65, 19.198, 53.448 is called "color". The color property can be set on classes, ids or directly on the HTML element.

This example shows how text in the color `rgb(188, 150, 131)` looks like.

```
.text, #text, p{  
    color:rgb(188, 150, 131)  
}
```

If you want to add a text shadow in that color use the text-shadow property, you can generate a text shadow directly with our [CSS Text Shadow Generator](#).

Here you see how black text with a 4 pixel rgb(188, 150, 131) colored shadow looks like.

```
.shadow{ text-shadow: 4px 4px 2px rgb(188, 150, 131) }
```

Border

The CSS property to change the border of an element to CIELCh 65, 19.198, 53.448 is called "border". The border property can be set on classes, ids or directly on the HTML element.

This example shows the color as border, it can be applied via the CSS property "border" or "border-color".

```
.border, #border, table{ border:4px solid rgb(188, 150, 131) }
```

If only the border color should be changed use the property `border-color`.

```
.border{ border-color:rgb(188, 150, 131) }
```

If you want to add a box shadow in that color use:

Here you see how a box with a 4 pixel `rgb(188, 150, 131)` colored shadow looks like.

```
.boxshadow{ -moz-box-shadow:4px 4px 4px  
4px rgb(188, 150, 131); -webkit-box-  
shadow:4px 4px 4px 4px rgb(188, 150, 131);  
box-shadow:4px 4px 4px 4px rgb(188, 150,  
131) }
```

Background

The CSS property to change the background color of an element to CIELCh 65, 19.198, 53.448 is called "background". The background property can be set on classes, ids or directly on the HTML element.

```
.background, #background, body{  
background: rgb(188, 150, 131) }
```

If only the background color should be changed can be used:

```
.background{ background-color: rgb(188,  
150, 131) }
```

This example shows the color as background, it is applied via the CSS property "background".

To optimize and compress your CSS code, you can use our [online CSS compressor and optimizer](#) based on csstidy. If you want to create a linear or radial gradient as background or border, check our [CSS Gradient Generator](#).

Hey! You found this booklet interesting? Support Converting Colors with the new Membership Option!

The pro membership hides all ads, plus gives you double the colors in the color bucket, and more awesome pro features!

[Learn more, Memberships starting at \\$2.50/m!](#)

**Follow me
on Twitter!**

@ConvertingColor