

Converting Colors

CIELCh(65, 21.371, 21.380)

Have a look what the booklet for
CIELCh(65, 21.371, 21.380) contains.

CIELCh(65, 21.111, 21.475)	3
<i>Conversions</i>	4
<i>Details</i>	6
<i>Harmonies</i>	11
<i>Previews</i>	20
<i>Color Blindness Simulation</i>	23
<i>CSS Examples</i>	26

Color

CIELCh(65, 21.111, 21.475)

Conversions

Conversions Part 1

Format	Color
Hex	C59191
RGB	197, 145, 145
RGB Percent	77%, 57%, 57%
CMY	0.2285, 0.4323, 0.4323
CMYK	0.00, 0.26, 0.26, 0.23
HSL	0°, 31%, 67%
HSV	0°, 26%, 77%
XYZ	38.1366, 34.0472, 31.2512
YIQ	160.5480, 30.9920, 11.0240

Conversions

Conversions Part 2

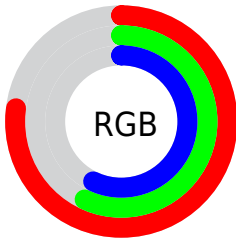
Format	Color
RYB	197, 145, 145
Decimal	12947857
CIELab	65.00, 19.65, 7.73
CIELCh	65, 21.111, 21.475
Yxy	34.0472, 0.3687, 0.3292
Android (android.graphics.Color)	4291137937 (0xFFC59191)
YUV	160.5480, -7.6652, 31.9684
Hunter-Lab	58.3500, 14.5524, 9.0903

Details

The CIELCh color **65, 21.111, 21.475** is a light color, and the websafe version is hex **CC9999**. A complement of this color would be **76, 17.682, 198.097**, and the grayscale version is **66, 0.008, 296.813**.

A 20% lighter version of the original color is **85, 21.322, 21.045**, and **45, 21.130, 20.692** is the 20% darker color. If you saturate the color by 10%, you get **60, 30.179, 22.742**, and if you desaturate by 10%, it is **70, 12.623, 20.502**.

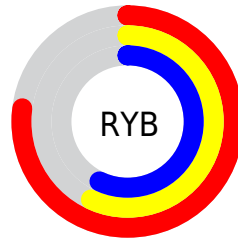
Distribution



Red (77%)

Green (57%)

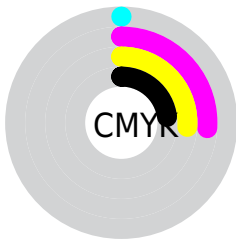
Blue (57%)



Red (77%)

Yellow (57%)

Blue (57%)

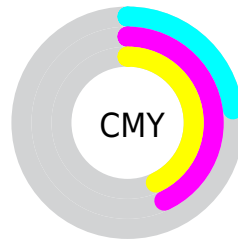


Cyan (0%)

Magenta (26%)

Yellow (26%)

Black (23%)



Cyan (23%)

Magenta (43%)

Yellow (43%)

Brightness & Saturation Gradients

These gradients show how the CIELCh color 65, 21.111, 21.475 changes by changing the brightness by 10 percent. The first figure shows a shift by +10% for each color and the second figure -10%.

Similar to the brightness gradients but the following saturation gradients show a change of the CIELCh color 65, 21.111, 21.475 by changing the saturation by 10% instead.

65, 21.111, 21.475

65, 21.111, 21.475

100, 21.111,
21.475

55, 21.111, 21.475

85, 21.111, 21.475

45, 21.111, 21.475

95, 21.111, 21.475

35, 21.111, 21.475

25, 21.111, 21.475

15, 21.111, 21.475

5, 21.111, 21.475

0, 21.111, 21.475

65, 21.111, 21.475

65, 21.111, 21.475

60, 30.179, 22.742

70, 12.623, 20.502

■ 55, 39.743, 24.388

■ 76, 4.746, 19.688

■ 51, 49.619, 26.526

■ 81, 2.542, 199.438

■ 47, 59.533, 29.251

■ 87, 9.284, 198.826

■ 44, 69.099, 32.550

■ 93, 15.534,
198.439

■ 42, 77.692, 36.112

■ 96, 19.092,
198.245

■ 41, 84.014, 39.034

■ 41, 86.025, 40.001

Harmonies

Complementary

The Complementary color scheme is a pair of colors which are on the opposite of each other on the color wheel.



65, 21.111, 21.475



76, 17.682, 198.097

Rectangle

The Rectangle color scheme consists of four colors that form a rectangle on the color wheel.



65, 21.111, 21.475



65, 21.111, 71.475



65, 21.111, 201.475



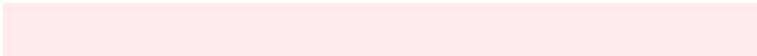
65, 21.111, 251.475

Sweetspot

The Sweet Spot groups the original color and five complimentary colors.



65, 21.109, 21.480



94, 7.348, 19.826



67, 34.218, 325.867



49, 5.254, 19.947



0, 0.000, 0.000



53, 0.007, 296.813

Same Dimension

The Same Dimension uses a secret algorithm to generate beautiful new colors.



65, 21.109, 21.480



79, 32.278, 22.207



71, 17.722, 72.155



39, 4.279, 19.926



34, 74.644, 39.777



3, 15.884, 19.407

Inverse Universe

The Inverse Universe completely reimagines the original color for something new.



76, 17.682, 198.097



95, 25.826, 197.829



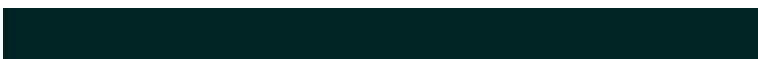
69, 16.499, 259.414



41, 4.034, 198.982



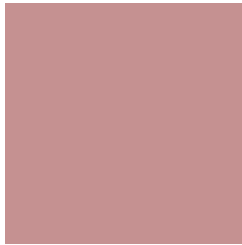
61, 35.886, 196.393



12, 12.983, 196.391

Previews

White Background



This preview shows how the CIELCh color 65, 21.111, 21.475 looks on a white background.

Color Contrast Check

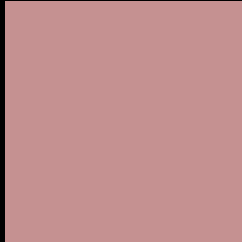
Large Text (above 18pt) WCAG AA × Fail

Any Text WCAG AA × Fail

Large Text (above 18pt) WCAG AAA × Fail

Any Text WCAG AAA × Fail

Black Background



This preview shows how the CIE LCh color 65, 21.111, 21.475 looks on a black background.

Color Contrast Check

Large Text (above 18pt) WCAG AA ✓ Pass

Any Text WCAG AA ✓ Pass

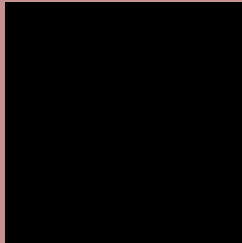
Large Text (above 18pt) WCAG AAA ✓ Pass

Any Text WCAG AAA ✓ Pass

If you want to check with other color combinations, try the [Color Contrast Checker](#).

CIELCh 65, 21.111, 21.475

Background



This preview shows how black text looks on a background with the CIELCh color 65, 21.111, 21.475.



This preview shows how white text looks on a background with the CIELCh color 65, 21.111, 21.475.

Color Blindness Simulation

Color vision deficiency is a very complex topic, and I could not describe the different causes any better than Wikipedia does, so if you want to learn more, you should check out their [article about color blindness](#).

Dichromacy



Original Color

65, 21.111, 21.475

Protanopia

65, 3.368, 74.593

Deuteranopia

65, 12.027, 44.613



Tritanopia
65, 22.581, 6.259

Trichromacy



Original Color
65, 21.111, 21.475

Protanomaly
65, 9.015, 34.296

Deuteranomaly
65, 14.859, 31.376

Tritanomaly
65, 21.892, 11.559

Monochromacy



Original Color
65, 21.111, 21.475

Achromatopsia
66, 0.008, 296.813

Achromatomaly
65, 7.441, 20.041

CSS Examples

Text

The CSS property to change the color of the text to CIELCh 65, 21.111, 21.475 is called "color". The color property can be set on classes, ids or directly on the HTML element.

This example shows how text in the color `rgb(197, 145, 145)` looks like.

```
.text, #text, p{  
    color:rgb(197, 145, 145)  
}
```

If you want to add a text shadow in that color use the text-shadow property, you can generate a text shadow directly with our [CSS Text Shadow Generator](#).

Here you see how black text with a 4 pixel rgb(197, 145, 145) colored shadow looks like.

```
.shadow{ text-shadow: 4px 4px 2px rgb(197, 145, 145) }
```

Border

The CSS property to change the border of an element to CIELCh 65, 21.111, 21.475 is called "border". The border property can be set on classes, ids or directly on the HTML element.

This example shows the color as border, it can be applied via the CSS property "border" or "border-color".

```
.border, #border, table{ border:4px solid rgb(197, 145, 145) }
```

If only the border color should be changed use the property `border-color`.

```
.border{ border-color:rgb(197, 145, 145) }
```

If you want to add a box shadow in that color use:

Here you see how a box with a 4 pixel `rgb(197, 145, 145)` colored shadow looks like.

```
.boxshadow{ -moz-box-shadow:4px 4px 4px  
4px rgb(197, 145, 145); -webkit-box-  
shadow:4px 4px 4px 4px rgb(197, 145, 145);  
box-shadow:4px 4px 4px 4px rgb(197, 145,  
145) }
```

Background

The CSS property to change the background color of an element to CIELCh 65, 21.111, 21.475 is called "background". The background property can be set on classes, ids or directly on the HTML element.

```
.background, #background, body{  
background: rgb(197, 145, 145) }
```

If only the background color should be changed can be used:

```
.background{ background-color: rgb(197,  
145, 145) }
```

This example shows the color as background, it is applied via the CSS property "background".

To optimize and compress your CSS code, you can use our [online CSS compressor and optimizer](#) based on csstidy. If you want to create a linear or radial gradient as background or border, check our [CSS Gradient Generator](#).

Hey! You found this booklet interesting? Support Converting Colors with the new Membership Option!

The pro membership hides all ads, plus gives you double the colors in the color bucket, and more awesome pro features!

[Learn more, Memberships starting at \\$2.50/m!](#)

**Follow me
on Twitter!**

@ConvertingColor