

Converting Colors

CIELCh(65, 23.718, 22.550)

Have a look what the booklet for
CIELCh(65, 23.718, 22.550) contains.

CIELCh(65, 23.755, 23.068)	3
<i>Conversions</i>	4
<i>Details</i>	6
<i>Harmonies</i>	11
<i>Previews</i>	20
<i>Color Blindness Simulation</i>	23
<i>CSS Examples</i>	26

Color

CIELCh(65, 23.755, 23.068)

Conversions

Conversions Part 1

Format	Color
Hex	C98F8E
RGB	201, 143, 142
RGB Percent	79%, 56%, 56%
CMY	0.2115, 0.4389, 0.4429
CMYK	0.00, 0.29, 0.29, 0.21
HSL	1°, 35%, 67%
HSV	1°, 29%, 79%
XYZ	38.8264, 34.0472, 30.1424
YIQ	160.2280, 34.8890, 11.9850

Conversions

Conversions Part 2

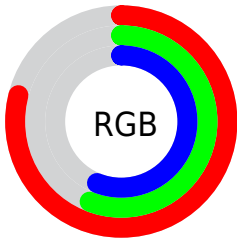
Format	Color
R _Y B	201, 143, 142
Decimal	13209486
CIE Lab	65.00, 21.86, 9.31
CIE LCh	65, 23.755, 23.068
Yxy	34.0472, 0.3769, 0.3305
Android (android.graphics.Color)	4291399566 (0xFFC98F8E)
YUV	160.2280, -8.9864, 35.7570
Hunter-Lab	58.3500, 16.6626, 10.2170

Details

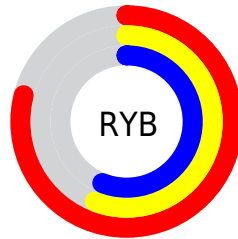
The CIELCh color **65, 23.755, 23.068** is a light color, and the websafe version is hex **CC9999**. A complement of this color would be **77, 19.422, 199.591**, and the grayscale version is **66, 0.008, 296.813**.

A 20% lighter version of the original color is **85, 22.205, 22.459**, and **45, 24.010, 22.701** is the 20% darker color. If you saturate the color by 10%, you get **60, 33.032, 24.353**, and if you desaturate by 10%, it is **70, 15.063, 22.091**.

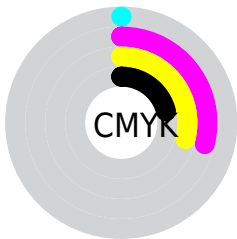
Distribution



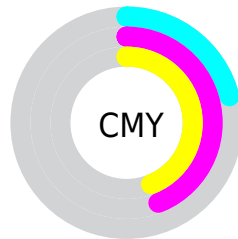
- Red (79%)
- Green (56%)
- Blue (56%)



- Red (79%)
- Yellow (56%)
- Blue (56%)



- Cyan (0%)
- Magenta (29%)
- Yellow (29%)
- Black (21%)



- Cyan (21%)
- Magenta (44%)
- Yellow (44%)

Brightness & Saturation Gradients

These gradients show how the CIELCh color 65, 23.755, 23.068 changes by changing the brightness by 10 percent. The first figure shows a shift by +10% for each color and the second figure -10%.

Similar to the brightness gradients but the following saturation gradients show a change of the CIELCh color 65, 23.755, 23.068 by changing the saturation by 10% instead.

65, 23.755, 23.068

65, 23.755, 23.068

100, 23.755,
23.068

55, 23.755, 23.068

85, 23.755, 23.068

45, 23.755, 23.068

95, 23.755, 23.068

35, 23.755, 23.068

25, 23.755, 23.068

15, 23.755, 23.068

5, 23.755, 23.068

0, 23.755, 23.068

65, 23.755, 23.068

65, 23.755, 23.068

60, 33.032, 24.353

70, 15.063, 22.091

■ 55, 42.797, 26.029

■ 76, 6.994, 21.310

■ 51, 52.857, 28.201

■ 81, 0.470, 202.005

■ 48, 62.918, 30.936

■ 87, 7.368, 200.459

■ 45, 72.544, 34.161

■ 93, 13.755,
200.083

■ 43, 80.923, 37.426

■ 96, 17.773,
198.328

■ 42, 86.828, 39.979

■ 42, 87.209, 40.161

Harmonies

Complementary

The Complementary color scheme is a pair of colors which are on the opposite of each other on the color wheel.



65, 23.755, 23.068



77, 19.422, 199.591

Rectangle

The Rectangle color scheme consists of four colors that form a rectangle on the color wheel.



65, 23.755, 23.068



65, 23.755, 73.068



65, 23.755, 203.068



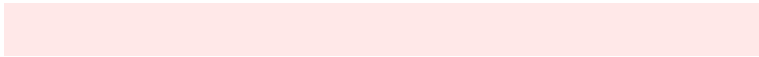
65, 23.755, 253.068

Sweetspot

The Sweet Spot groups the original color and five complimentary colors.



65, 23.753, 23.073



94, 8.161, 21.294



66, 38.221, 326.485



49, 5.704, 21.402



0, 0.000, 0.000



53, 0.007, 296.813

Same Dimension

The Same Dimension uses a secret algorithm to generate beautiful new colors.



65, 23.753, 23.073



77, 35.149, 23.818



72, 20.349, 73.506



39, 4.207, 21.312



34, 74.410, 40.003



3, 15.715, 20.298

Inverse Universe

The Inverse Universe completely reimagines the original color for something new.



77, 19.422, 199.591



94, 27.393, 199.380



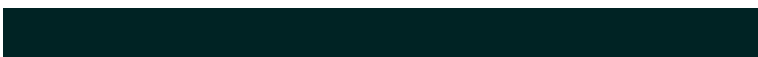
69, 18.932, 261.802



41, 3.965, 200.477



60, 35.043, 199.045



12, 12.743, 198.447

Previews

White Background



This preview shows how the CIELCh color 65, 23.755, 23.068 looks on a white background.

Color Contrast Check

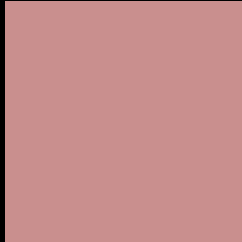
Large Text (above 18pt) WCAG AA × Fail

Any Text WCAG AA × Fail

Large Text (above 18pt) WCAG AAA × Fail

Any Text WCAG AAA × Fail

Black Background



This preview shows how the CIELCh color 65, 23.755, 23.068 looks on a black background.

Color Contrast Check

Large Text (above 18pt) WCAG AA ✓ Pass

Any Text WCAG AA ✓ Pass

Large Text (above 18pt) WCAG AAA ✓ Pass

Any Text WCAG AAA ✓ Pass

If you want to check with other color combinations, try the [Color Contrast Checker](#).

CIELCh 65, 23.755, 23.068

Background



This preview shows how black text looks on a background with the CIELCh color 65, 23.755, 23.068.

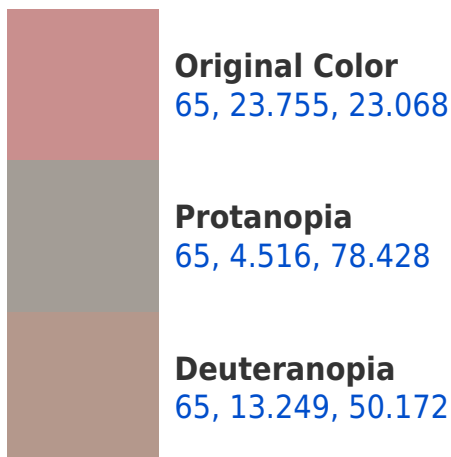


This preview shows how white text looks on a background with the CIELCh color 65, 23.755, 23.068.

Color Blindness Simulation

Color vision deficiency is a very complex topic, and I could not describe the different causes any better than Wikipedia does, so if you want to learn more, you should check out their [article about color blindness](#).

Dichromacy





Tritanopia
65, 24.989, 8.095

Trichromacy



Original Color
65, 23.755, 23.068

Protanomaly
65, 10.378, 35.649

Deuteranomaly
65, 16.590, 36.150

Tritanomaly
65, 24.361, 14.183

Monochromacy



Original Color
65, 23.755, 23.068

Achromatopsia
66, 0.008, 296.813

Achromatomaly
65, 8.277, 23.932

CSS Examples

Text

The CSS property to change the color of the text to CIELCh 65, 23.755, 23.068 is called "color". The color property can be set on classes, ids or directly on the HTML element.

This example shows how text in the color `rgb(201, 143, 142)` looks like.

```
.text, #text, p{  
    color:rgb(201, 143, 142)  
}
```

If you want to add a text shadow in that color use the text-shadow property, you can generate a text shadow directly with our [CSS Text Shadow Generator](#).

Here you see how black text with a 4 pixel rgb(201, 143, 142) colored shadow looks like.

```
.shadow{ text-shadow: 4px 4px 2px rgb(201, 143, 142) }
```

Border

The CSS property to change the border of an element to CIELCh 65, 23.755, 23.068 is called "border". The border property can be set on classes, ids or directly on the HTML element.

This example shows the color as border, it can be applied via the CSS property "border" or "border-color".

```
.border, #border, table{ border:4px solid rgb(201, 143, 142) }
```

If only the border color should be changed use the property `border-color`.

```
.border{ border-color:rgb(201, 143, 142) }
```

If you want to add a box shadow in that color use:

Here you see how a box with a 4 pixel `rgb(201, 143, 142)` colored shadow looks like.

```
.boxshadow{ -moz-box-shadow:4px 4px 4px 4px rgb(201, 143, 142); -webkit-box-shadow:4px 4px 4px 4px rgb(201, 143, 142); box-shadow:4px 4px 4px 4px rgb(201, 143, 142) }
```

Background

The CSS property to change the background color of an element to CIELCh 65, 23.755, 23.068 is called "background". The background property can be set on classes, ids or directly on the HTML element.

```
.background, #background, body{  
background: rgb(201, 143, 142) }
```

If only the background color should be changed can be used:

```
.background{ background-color: rgb(201,  
143, 142) }
```

This example shows the color as background, it is applied via the CSS property "background".

To optimize and compress your CSS code, you can use our [online CSS compressor and optimizer](#) based on csstidy. If you want to create a linear or radial gradient as background or border, check our [CSS Gradient Generator](#).

Hey! You found this booklet interesting? Support Converting Colors with the new Membership Option!

The pro membership hides all ads, plus gives you double the colors in the color bucket, and more awesome pro features!

[Learn more, Memberships starting at \\$2.50/m!](#)

**Follow me
on Twitter!**

@ConvertingColor