

Converting Colors

CIELCh(65, 25.077, 67.995)

Have a look what the booklet for
CIELCh(65, 25.077, 67.995) contains.

CIELCh(65, 24.874, 68.566)	3
<i>Conversions</i>	4
<i>Details</i>	6
<i>Harmonies</i>	11
<i>Previews</i>	20
<i>Color Blindness Simulation</i>	23
<i>CSS Examples</i>	26

Color

CIELCh(65, 24.874, 68.566)

Conversions

Conversions Part 1

Format	Color
Hex	BC9775
RGB	188, 151, 117
RGB Percent	74%, 59%, 46%
CMY	0.2633, 0.4083, 0.5417
CMYK	0.00, 0.20, 0.38, 0.26
HSL	29°, 35%, 60%
HSV	29°, 38%, 74%
XYZ	34.9547, 34.0472, 21.5211
YIQ	158.1870, 32.9660, -2.7300

Conversions

Conversions Part 2

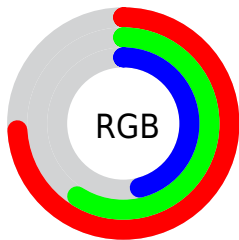
Format	Color
RYB	188, 182, 117
Decimal	12359541
CIELab	65.00, 9.09, 23.15
CIELCh	65, 24.874, 68.566
Yxy	34.0472, 0.3861, 0.3761
Android (android.graphics.Color)	4290549621 (0xFFBC9775)
YUV	158.1870, -20.3052, 26.1460
Hunter-Lab	58.3500, 4.8185, 18.9772

Details

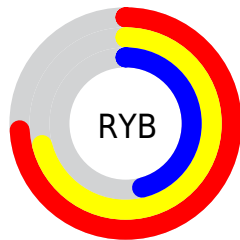
The CIELCh color **65, 24.874, 68.566** is a light color, and the websafe version is hex **CC9966**. A complement of this color would be **62, 22.045, 259.335**, and the grayscale version is **65, 0.008, 296.813**.

A 20% lighter version of the original color is **85, 24.885, 68.765**, and **45, 24.952, 68.749** is the 20% darker color. If you saturate the color by 10%, you get **62, 32.251, 67.368**, and if you desaturate by 10%, it is **68, 17.830, 69.773**.

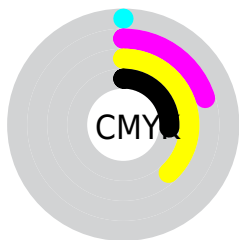
Distribution



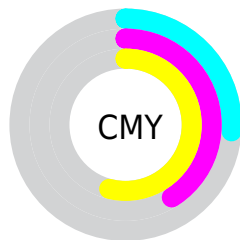
- Red (74%)
- Green (59%)
- Blue (46%)



- Red (74%)
- Yellow (71%)
- Blue (46%)



- Cyan (0%)
- Magenta (20%)
- Yellow (38%)
- Black (26%)



- Cyan (26%)
- Magenta (41%)
- Yellow (54%)


Brightness & Saturation Gradients

These gradients show how the CIELCh color 65, 24.874, 68.566 changes by changing the brightness by 10 percent. The first figure shows a shift by +10% for each color and the second figure -10%.

Similar to the brightness gradients but the following saturation gradients show a change of the CIELCh color 65, 24.874, 68.566 by changing the saturation by 10% instead.

 65, 24.874, 68.566

 65, 24.874, 68.566

 100, 24.874,
68.566

 55, 24.874, 68.566

 85, 24.874, 68.566

 45, 24.874, 68.566

 95, 24.874, 68.566

 35, 24.874, 68.566

 25, 24.874, 68.566

 15, 24.874, 68.566

 5, 24.874, 68.566

 0, 24.874, 68.566

 65, 24.874, 68.566

 65, 24.874, 68.566

 62, 32.251, 67.368

 68, 17.830, 69.773

59, 39.906, 66.150

71, 11.127, 70.964

57, 47.695, 64.883

74, 4.750, 72.113

54, 55.292, 63.470

77, 1.329, 253.641

52, 62.070, 61.703

80, 7.136, 254.564

50, 67.253, 59.327

83, 12.703,
255.658

49, 68.385, 58.844

86, 18.056,
256.728

89, 18.580,
245.447

92, 18.210,
225.763

Harmonies

Complementary

The Complementary color scheme is a pair of colors which are on the opposite of each other on the color wheel.



65, 24.874, 68.566



62, 22.045, 259.335

Rectangle

The Rectangle color scheme consists of four colors that form a rectangle on the color wheel.



65, 24.874, 68.566



65, 24.874, 118.566



65, 24.874, 248.566



65, 24.874, 298.566

Sweetspot

The Sweet Spot groups the original color and five complimentary colors.



65, 24.874, 68.572



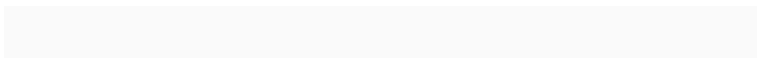
92, 8.393, 71.733



58, 34.340, 345.409



49, 5.656, 71.578



98, 0.011, 296.813



51, 0.007, 296.813

Same Dimension

The Same Dimension uses a secret algorithm to generate beautiful new colors.



65, 24.874, 68.572



80, 37.470, 67.615



74, 36.365, 105.090



38, 3.484, 71.940



42, 60.013, 59.380



6, 10.043, 57.279

Inverse Universe

The Inverse Universe completely reimagines the original color for something new.



62, 22.045, 259.335



76, 32.272, 261.256



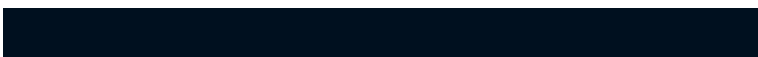
53, 39.760, 293.850



38, 3.399, 254.350



35, 47.874, 281.322



4, 11.312, 266.648

Previews

White Background



This preview shows how the CIELCh color 65, 24.874, 68.566 looks on a white background.

Color Contrast Check

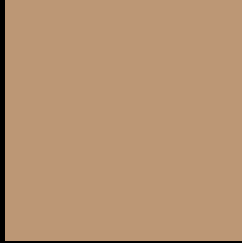
Large Text (above 18pt) WCAG AA × Fail

Any Text WCAG AA × Fail

Large Text (above 18pt) WCAG AAA × Fail

Any Text WCAG AAA × Fail

Black Background



This preview shows how the CIELCh color 65, 24.874, 68.566 looks on a black background.

Color Contrast Check

Large Text (above 18pt) WCAG AA ✓ Pass

Any Text WCAG AA ✓ Pass

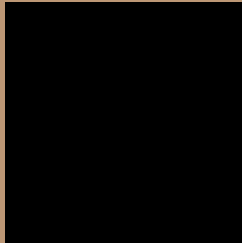
Large Text (above 18pt) WCAG AAA ✓ Pass

Any Text WCAG AAA ✓ Pass

If you want to check with other color combinations, try the [Color Contrast Checker](#).

CIELCh 65, 24.874, 68.566

Background



This preview shows how black text looks on a background with the CIELCh color 65, 24.874, 68.566.



This preview shows how white text looks on a background with the CIELCh color 65, 24.874, 68.566.

Color Blindness Simulation

Color vision deficiency is a very complex topic, and I could not describe the different causes any better than Wikipedia does, so if you want to learn more, you should check out their [article about color blindness](#).

Dichromacy



Original Color

65, 24.874, 68.566

Protanopia

65, 21.443, 95.491

Deuteranopia

65, 24.586, 69.319



Tritanopia
65, 19.582, 1.711

Trichromacy



Original Color
65, 24.874, 68.566

Protanomaly
65, 21.861, 84.036

Deuteranomaly
65, 24.586, 69.319

Tritanomaly
65, 17.789, 29.897

Monochromacy



Original Color
65, 24.874, 68.566

Achromatopsia
65, 0.008, 296.813

Achromatomaly
65, 8.698, 69.340

CSS Examples

Text

The CSS property to change the color of the text to CIELCh 65, 24.874, 68.566 is called "color". The color property can be set on classes, ids or directly on the HTML element.

This example shows how text in the color `rgb(188, 151, 117)` looks like.

```
.text, #text, p{  
    color:rgb(188, 151, 117)  
}
```

If you want to add a text shadow in that color use the text-shadow property, you can generate a text shadow directly with our [CSS Text Shadow Generator](#).

Here you see how black text with a 4 pixel rgb(188, 151, 117) colored shadow looks like.

```
.shadow{ text-shadow: 4px 4px 2px rgb(188, 151, 117) }
```

Border

The CSS property to change the border of an element to CIELCh 65, 24.874, 68.566 is called "border". The border property can be set on classes, ids or directly on the HTML element.

This example shows the color as border, it can be applied via the CSS property "border" or "border-color".

```
.border, #border, table{ border:4px solid rgb(188, 151, 117) }
```

If only the border color should be changed use the property `border-color`.

```
.border{ border-color:rgb(188, 151, 117) }
```

If you want to add a box shadow in that color use:

Here you see how a box with a 4 pixel `rgb(188, 151, 117)` colored shadow looks like.

```
.boxshadow{ -moz-box-shadow:4px 4px 4px  
4px rgb(188, 151, 117); -webkit-box-  
shadow:4px 4px 4px 4px rgb(188, 151, 117);  
box-shadow:4px 4px 4px 4px rgb(188, 151,  
117) }
```

Background

The CSS property to change the background color of an element to CIELCh 65, 24.874, 68.566 is called "background". The background property can be set on classes, ids or directly on the HTML element.

```
.background, #background, body{  
background: rgb(188, 151, 117) }
```

If only the background color should be changed can be used:

```
.background{ background-color: rgb(188,  
151, 117) }
```

This example shows the color as background, it is applied via the CSS property "background".

To optimize and compress your CSS code, you can use our [online CSS compressor and optimizer](#) based on csstidy. If you want to create a linear or radial gradient as background or border, check our [CSS Gradient Generator](#).

Hey! You found this booklet interesting? Support Converting Colors with the new Membership Option!

The pro membership hides all ads, plus gives you double the colors in the color bucket, and more awesome pro features!

[Learn more, Memberships starting at \\$2.50/m!](#)

**Follow me
on Twitter!**

@ConvertingColor