

Converting Colors

CIELCh(65, 25.422, 38.950)

Have a look what the booklet for
CIELCh(65, 25.422, 38.950) contains.

CIELCh(65, 25.413, 39.037)	3
<i>Conversions</i>	4
<i>Details</i>	6
<i>Harmonies</i>	11
<i>Previews</i>	20
<i>Color Blindness Simulation</i>	23
<i>CSS Examples</i>	26

Color

CIELCh(65, 25.413, 39.037)

Conversions

Conversions Part 1

Format	Color
Hex	C99082
RGB	201, 144, 130
RGB Percent	79%, 56%, 51%
CMY	0.2111, 0.4347, 0.4896
CMYK	0.00, 0.28, 0.35, 0.21
HSL	12°, 40%, 65%
HSV	12°, 35%, 79%
XYZ	38.1658, 34.0472, 25.7304
YIQ	159.4470, 38.4660, 7.7300

Conversions

Conversions Part 2

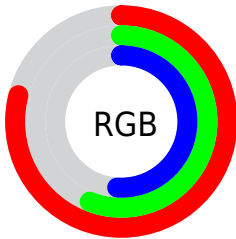
Format	Color
R _Y B	201, 147, 130
Decimal	13209730
CIE Lab	65.00, 19.74, 16.01
CIE LCh	65, 25.413, 39.037
Yxy	34.0472, 0.3897, 0.3476
Android (android.graphics.Color)	4291399810 (0xFFC99082)
YUV	159.4470, -14.5174, 36.4420
Hunter-Lab	58.3500, 14.6415, 14.7000

Details

The CIELCh color **65, 25.413, 39.037** is a light color, and the websafe version is hex **CC9999**. A complement of this color would be **73, 19.794, 220.910**, and the grayscale version is **66, 0.008, 296.813**.

A 20% lighter version of the original color is **85, 23.809, 40.051**, and **45, 25.268, 38.397** is the 20% darker color. If you saturate the color by 10%, you get **61, 33.976, 39.376**, and if you desaturate by 10%, it is **69, 17.470, 38.893**.

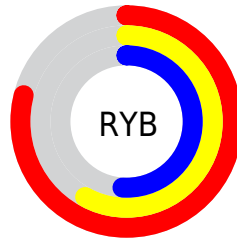
Distribution



Red (79%)

Green (56%)

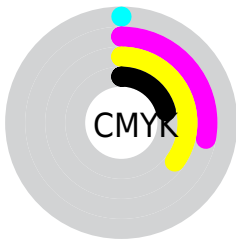
Blue (51%)



Red (79%)

Yellow (58%)

Blue (51%)

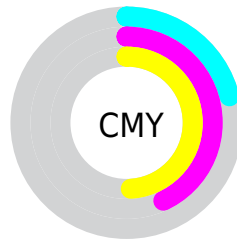


Cyan (0%)

Magenta (28%)

Yellow (35%)

Black (21%)



Cyan (21%)

Magenta (43%)

Yellow (49%)

Brightness & Saturation Gradients

These gradients show how the CIELCh color 65, 25.413, 39.037 changes by changing the brightness by 10 percent. The first figure shows a shift by +10% for each color and the second figure -10%.

Similar to the brightness gradients but the following saturation gradients show a change of the CIELCh color 65, 25.413, 39.037 by changing the saturation by 10% instead.

65, 25.413, 39.037

65, 25.413, 39.037

100, 25.413,
39.037

55, 25.413, 39.037

85, 25.413, 39.037

45, 25.413, 39.037

95, 25.413, 39.037

35, 25.413, 39.037

25, 25.413, 39.037

15, 25.413, 39.037

5, 25.413, 39.037

0, 25.413, 39.037

65, 25.413, 39.037

65, 25.413, 39.037

61, 33.976, 39.376

69, 17.470, 38.893

57, 43.132, 39.931

74, 10.136, 38.880

53, 52.773, 40.724

79, 3.371, 38.897

50, 62.642, 41.707

83, 2.875, 219.461

47, 72.159, 42.675

88, 8.655, 219.609

45, 80.071, 43.080

93, 14.024,
219.904

44, 83.256, 43.279

96, 17.746,
198.330

Harmonies

Complementary

The Complementary color scheme is a pair of colors which are on the opposite of each other on the color wheel.



65, 25.413, 39.037



73, 19.794, 220.910

Rectangle

The Rectangle color scheme consists of four colors that form a rectangle on the color wheel.



65, 25.413, 39.037



65, 25.413, 89.037



65, 25.413, 219.037



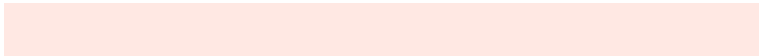
65, 25.413, 269.037

Sweetspot

The Sweet Spot groups the original color and five complimentary colors.



65, 25.412, 39.043



94, 8.683, 38.898



63, 40.925, 332.191



49, 5.867, 38.892



0, 0.000, 0.000



53, 0.007, 296.813

Same Dimension

The Same Dimension uses a secret algorithm to generate beautiful new colors.



65, 25.412, 39.043



77, 37.766, 39.265



74, 27.788, 87.909



40, 3.632, 38.906



36, 70.901, 43.627



5, 14.181, 30.953

Inverse Universe

The Inverse Universe completely reimagines the original color for something new.



73, 19.794, 220.910



88, 27.661, 221.603



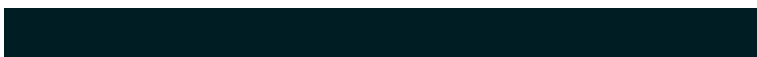
63, 27.794, 278.060



41, 3.427, 219.506



51, 31.397, 234.568



9, 11.174, 225.762

Previews

White Background



This preview shows how the CIELCh color 65, 25.413, 39.037 looks on a white background.

Color Contrast Check

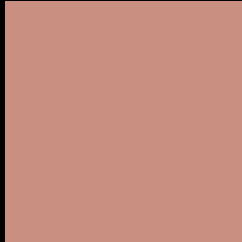
Large Text (above 18pt) WCAG AA × Fail

Any Text WCAG AA × Fail

Large Text (above 18pt) WCAG AAA × Fail

Any Text WCAG AAA × Fail

Black Background



This preview shows how the CIELCh color 65, 25.413, 39.037 looks on a black background.

Color Contrast Check

Large Text (above 18pt) WCAG AA ✓ Pass

Any Text WCAG AA ✓ Pass

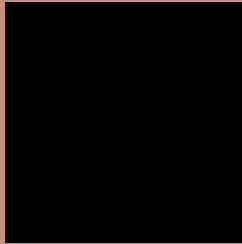
Large Text (above 18pt) WCAG AAA ✓ Pass

Any Text WCAG AAA ✓ Pass

If you want to check with other color combinations, try the [Color Contrast Checker](#).

CIELCh 65, 25.413, 39.037

Background



This preview shows how black text looks on a background with the CIELCh color 65, 25.413, 39.037.

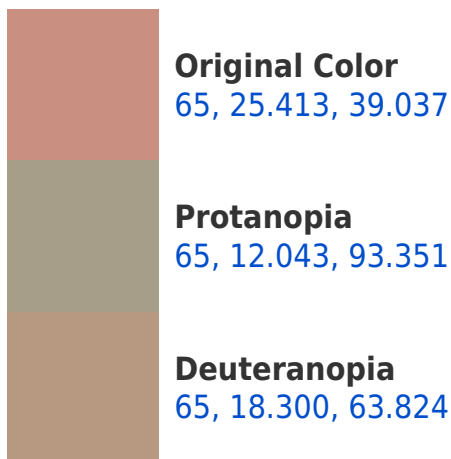


This preview shows how white text looks on a background with the CIELCh color 65, 25.413, 39.037.

Color Blindness Simulation

Color vision deficiency is a very complex topic, and I could not describe the different causes any better than Wikipedia does, so if you want to learn more, you should check out their [article about color blindness](#).

Dichromacy





Tritanopia
65, 25.383, 8.367

Trichromacy



Original Color
65, 25.413, 39.037

Protanomaly
65, 14.693, 62.453

Deuteranomaly
65, 20.660, 52.732

Tritanomaly
65, 24.435, 19.318

Monochromacy



Original Color
65, 25.413, 39.037

Achromatopsia
66, 0.008, 296.813

Achromatomaly
65, 8.790, 38.347

CSS Examples

Text

The CSS property to change the color of the text to CIELCh 65, 25.413, 39.037 is called "color". The color property can be set on classes, ids or directly on the HTML element.

This example shows how text in the color `rgb(201, 144, 130)` looks like.

```
.text, #text, p{  
    color:rgb(201, 144, 130)  
}
```

If you want to add a text shadow in that color use the text-shadow property, you can generate a text shadow directly with our [CSS Text Shadow Generator](#).

Here you see how black text with a 4 pixel rgb(201, 144, 130) colored shadow looks like.

```
.shadow{ text-shadow: 4px 4px 2px rgb(201, 144, 130) }
```

Border

The CSS property to change the border of an element to CIELCh 65, 25.413, 39.037 is called "border". The border property can be set on classes, ids or directly on the HTML element.

This example shows the color as border, it can be applied via the CSS property "border" or "border-color".

```
.border, #border, table{ border:4px solid rgb(201, 144, 130) }
```

If only the border color should be changed use the property border-color.

```
.border{ border-color:rgb(201, 144, 130) }
```

If you want to add a box shadow in that color use:

Here you see how a box with a 4 pixel rgb(201, 144, 130) colored shadow looks like.

```
.boxshadow{ -moz-box-shadow:4px 4px 4px  
4px rgb(201, 144, 130); -webkit-box-  
shadow:4px 4px 4px 4px rgb(201, 144, 130);  
box-shadow:4px 4px 4px 4px rgb(201, 144,  
130) }
```

Background

The CSS property to change the background color of an element to CIELCh 65, 25.413, 39.037 is called "background". The background property can be set on classes, ids or directly on the HTML element.

```
.background, #background, body{  
background: rgb(201, 144, 130) }
```

If only the background color should be changed can be used:

```
.background{ background-color: rgb(201,  
144, 130) }
```

This example shows the color as background, it is applied via the CSS property "background".

To optimize and compress your CSS code, you can use our [online CSS compressor and optimizer](#) based on csstidy. If you want to create a linear or radial gradient as background or border, check our [CSS Gradient Generator](#).

Hey! You found this booklet interesting? Support Converting Colors with the new Membership Option!

The pro membership hides all ads, plus gives you double the colors in the color bucket, and more awesome pro features!

[Learn more, Memberships starting at \\$2.50/m!](#)

**Follow me
on Twitter!**

@ConvertingColor