

Converting Colors

CIELCh(65, 26.435, 54.837)

Have a look what the booklet for
CIELCh(65, 26.435, 54.837) contains.

CIELCh(65, 26.496, 54.754)	3
<i>Conversions</i>	4
<i>Details</i>	6
<i>Harmonies</i>	11
<i>Previews</i>	20
<i>Color Blindness Simulation</i>	23
<i>CSS Examples</i>	26

Color

CIELCh(65, 26.496, 54.754)

Conversions

Conversions Part 1

Format	Color
Hex	C59378
RGB	197, 147, 120
RGB Percent	77%, 58%, 47%
CMY	0.2279, 0.4239, 0.5298
CMYK	0.00, 0.25, 0.39, 0.23
HSL	21°, 40%, 62%
HSV	21°, 39%, 77%
XYZ	36.8015, 34.0472, 22.3716
YIQ	158.8720, 38.4670, 2.2030

Conversions

Conversions Part 2

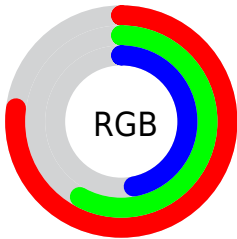
Format	Color
RYB	197, 162, 120
Decimal	12948344
CIELab	65.00, 15.29, 21.64
CIELCh	65, 26.496, 54.754
Yxy	34.0472, 0.3948, 0.3652
Android (android.graphics.Color)	4291138424 (0xFFC59378)
YUV	158.8720, -19.1639, 33.4383
Hunter-Lab	58.3500, 10.4680, 18.1130

Details

The CIELCh color $65, 26.496, 54.754$ is a light color, and the websafe version is hex $CC9966$. A complement of this color would be $67, 21.358, 243.104$, and the grayscale version is $65, 0.008, 296.813$.

A 20% lighter version of the original color is $85, 26.623, 55.032$, and $45, 26.455, 54.825$ is the 20% darker color. If you saturate the color by 10%, you get $62, 34.482, 54.130$, and if you desaturate by 10%, it is $69, 19.021, 55.463$.

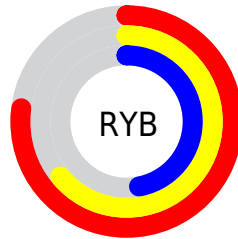
Distribution



Red (77%)

Green (58%)

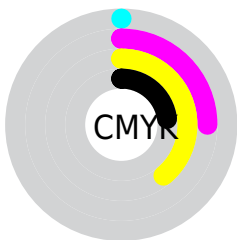
Blue (47%)



Red (77%)

Yellow (64%)

Blue (47%)

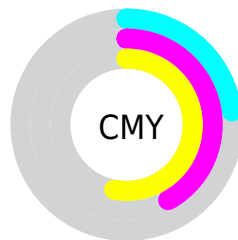


Cyan (0%)

Magenta (25%)

Yellow (39%)

Black (23%)



Cyan (23%)

Magenta (42%)

Yellow (53%)


Brightness & Saturation Gradients

These gradients show how the CIELCh color 65, 26.496, 54.754 changes by changing the brightness by 10 percent. The first figure shows a shift by +10% for each color and the second figure -10%.

Similar to the brightness gradients but the following saturation gradients show a change of the CIELCh color 65, 26.496, 54.754 by changing the saturation by 10% instead.

 65, 26.496, 54.754

 65, 26.496, 54.754

 100, 26.496,
54.754

 55, 26.496, 54.754

 85, 26.496, 54.754

 45, 26.496, 54.754

 95, 26.496, 54.754

 35, 26.496, 54.754

 25, 26.496, 54.754

 15, 26.496, 54.754

 5, 26.496, 54.754

 0, 26.496, 54.754

 65, 26.496, 54.754

 65, 26.496, 54.754

 62, 34.482, 54.130

 69, 19.021, 55.463

58, 42.946, 53.574

72, 12.047, 56.223

55, 51.754, 53.059

76, 5.543, 56.997

52, 60.576, 52.474

80, 0.535, 238.814

50, 68.692, 51.549

84, 6.233, 238.877

47, 75.223, 50.031

88, 11.594,
239.714

47, 75.815, 49.934

91, 15.858,
236.370

95, 17.294,
208.406

96, 19.044,
198.248

Harmonies

Complementary

The Complementary color scheme is a pair of colors which are on the opposite of each other on the color wheel.



65, 26.496, 54.754



67, 21.358, 243.104

Rectangle

The Rectangle color scheme consists of four colors that form a rectangle on the color wheel.



65, 26.496, 54.754



65, 26.496, 104.754



65, 26.496, 234.754



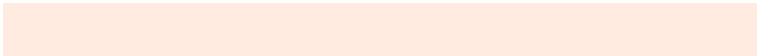
65, 26.496, 284.754

Sweetspot

The Sweet Spot groups the original color and five complimentary colors.



65, 26.495, 54.760



94, 9.114, 56.762



60, 39.690, 339.501



50, 6.073, 56.659



0, 0.000, 0.000



53, 0.007, 296.813

Same Dimension

The Same Dimension uses a secret algorithm to generate beautiful new colors.



65, 26.495, 54.760



79, 40.520, 54.212



75, 35.086, 98.878



40, 3.486, 56.976



39, 65.638, 50.442



6, 13.316, 42.027

Inverse Universe

The Inverse Universe completely reimagines the original color for something new.



67, 21.358, 243.104



82, 30.870, 244.969



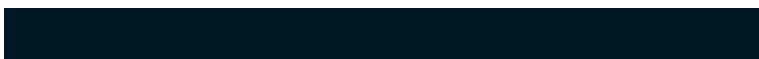
56, 37.443, 288.973



40, 3.337, 238.828



43, 38.079, 264.433



7, 11.855, 252.977

Previews

White Background



This preview shows how the CIELCh color 65, 26.496, 54.754 looks on a white background.

Color Contrast Check

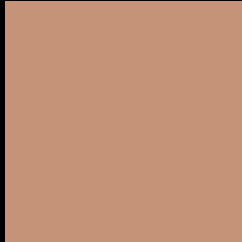
Large Text (above 18pt) WCAG AA × Fail

Any Text WCAG AA × Fail

Large Text (above 18pt) WCAG AAA × Fail

Any Text WCAG AAA × Fail

Black Background



This preview shows how the CIELCh color 65, 26.496, 54.754 looks on a black background.

Color Contrast Check

Large Text (above 18pt) WCAG AA ✓ Pass

Any Text WCAG AA ✓ Pass

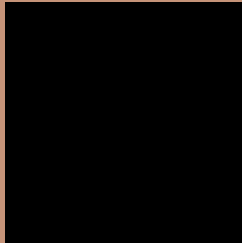
Large Text (above 18pt) WCAG AAA ✓ Pass

Any Text WCAG AAA ✓ Pass

If you want to check with other color combinations, try the [Color Contrast Checker](#).

CIELCh 65, 26.496, 54.754

Background



This preview shows how black text looks on a background with the CIELCh color 65, 26.496, 54.754.



This preview shows how white text looks on a background with the CIELCh color 65, 26.496, 54.754.

Color Blindness Simulation

Color vision deficiency is a very complex topic, and I could not describe the different causes any better than Wikipedia does, so if you want to learn more, you should check out their [article about color blindness](#).

Dichromacy





Tritanopia
65, 23.781, 7.214

Trichromacy



Original Color
65, 26.496, 54.754

Protanomaly
65, 20.232, 76.976

Deuteranomaly
65, 24.521, 64.145

Tritanomaly
65, 22.650, 25.740

Monochromacy



Original Color
65, 26.496, 54.754

Achromatopsia
65, 0.008, 296.813

Achromatomaly
65, 9.092, 57.218

CSS Examples

Text

The CSS property to change the color of the text to CIELCh 65, 26.496, 54.754 is called "color". The color property can be set on classes, ids or directly on the HTML element.

This example shows how text in the color `rgb(197, 147, 120)` looks like.

```
.text, #text, p{  
    color:rgb(197, 147, 120)  
}
```

If you want to add a text shadow in that color use the text-shadow property, you can generate a text shadow directly with our [CSS Text Shadow Generator](#).

Here you see how black text with a 4 pixel rgb(197, 147, 120) colored shadow looks like.

```
.shadow{ text-shadow: 4px 4px 2px rgb(197, 147, 120) }
```

Border

The CSS property to change the border of an element to CIELCh 65, 26.496, 54.754 is called "border". The border property can be set on classes, ids or directly on the HTML element.

This example shows the color as border, it can be applied via the CSS property "border" or "border-color".

```
.border, #border, table{ border:4px solid rgb(197, 147, 120) }
```

If only the border color should be changed use the property border-color.

```
.border{ border-color:rgb(197, 147, 120) }
```

If you want to add a box shadow in that color use:

Here you see how a box with a 4 pixel rgb(197, 147, 120) colored shadow looks like.

```
.boxshadow{ -moz-box-shadow:4px 4px 4px  
4px rgb(197, 147, 120); -webkit-box-  
shadow:4px 4px 4px 4px rgb(197, 147, 120);  
box-shadow:4px 4px 4px 4px rgb(197, 147,  
120) }
```

Background

The CSS property to change the background color of an element to CIELCh 65, 26.496, 54.754 is called "background". The background property can be set on classes, ids or directly on the HTML element.

```
.background, #background, body{  
background: rgb(197, 147, 120) }
```

If only the background color should be changed can be used:

```
.background{ background-color: rgb(197,  
147, 120) }
```

This example shows the color as background, it is applied via the CSS property "background".

To optimize and compress your CSS code, you can use our [online CSS compressor and optimizer](#) based on csstidy. If you want to create a linear or radial gradient as background or border, check our [CSS Gradient Generator](#).

Hey! You found this booklet interesting? Support Converting Colors with the new Membership Option!

The pro membership hides all ads, plus gives you double the colors in the color bucket, and more awesome pro features!

[Learn more, Memberships starting at \\$2.50/m!](#)

**Follow me
on Twitter!**

@ConvertingColor