

Converting Colors

CIELCh(65, 27.212, 30.175)

Have a look what the booklet for
CIELCh(65, 27.212, 30.175) contains.

CIELCh(65, 27.210, 31.166)	3
<i>Conversions</i>	4
<i>Details</i>	6
<i>Harmonies</i>	11
<i>Previews</i>	20
<i>Color Blindness Simulation</i>	23
<i>CSS Examples</i>	26

Color

CIELCh(65, 27.210, 31.166)

Conversions

Conversions Part 1

Format	Color
Hex	CE8E86
RGB	206, 142, 134
RGB Percent	81%, 56%, 53%
CMY	0.1934, 0.4443, 0.4756
CMYK	0.00, 0.31, 0.35, 0.19
HSL	7°, 42%, 67%
HSV	7°, 35%, 81%
XYZ	39.2763, 34.0472, 26.9503
YIQ	160.2240, 40.7120, 11.0800

Conversions

Conversions Part 2

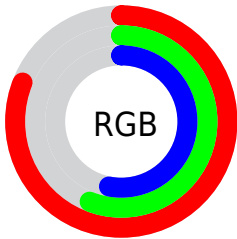
Format	Color
R _Y B	206, 143, 134
Decimal	13536902
CIE Lab	65.00, 23.28, 14.08
CIE LCh	65, 27.210, 31.166
Yxy	34.0472, 0.3917, 0.3395
Android (android.graphics.Color)	4291726982 (0xFFCE8E86)
YUV	160.2240, -12.9284, 40.1456
Hunter-Lab	58.3500, 18.0387, 13.4605

Details

The CIELCh color **65, 27.210, 31.166** is a light color, and the websafe version is hex **CC9999**. A complement of this color would be **76, 21.102, 209.805**, and the grayscale version is **66, 0.008, 296.813**.

A 20% lighter version of the original color is **84, 23.501, 32.575**, and **45, 27.412, 31.469** is the 20% darker color. If you saturate the color by 10%, you get **60, 36.391, 32.082**, and if you desaturate by 10%, it is **70, 18.651, 30.520**.

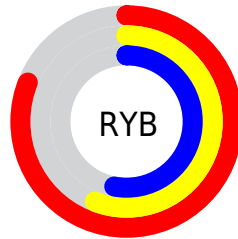
Distribution



Red (81%)

Green (56%)

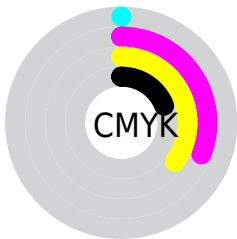
Blue (53%)



Red (81%)

Yellow (56%)

Blue (53%)

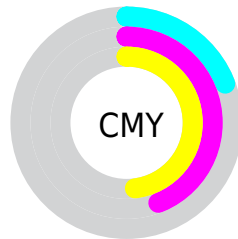


Cyan (0%)

Magenta (31%)

Yellow (35%)

Black (19%)



Cyan (19%)

Magenta (44%)

Yellow (48%)


Brightness & Saturation Gradients

These gradients show how the CIELCh color 65, 27.210, 31.166 changes by changing the brightness by 10 percent. The first figure shows a shift by +10% for each color and the second figure -10%.

Similar to the brightness gradients but the following saturation gradients show a change of the CIELCh color 65, 27.210, 31.166 by changing the saturation by 10% instead.

 65, 27.210, 31.166

 65, 27.210, 31.166

 100, 27.210,
31.166

 55, 27.210, 31.166

 85, 27.210, 31.166

 45, 27.210, 31.166

 95, 27.210, 31.166

 35, 27.210, 31.166

 25, 27.210, 31.166

 15, 27.210, 31.166

 5, 27.210, 31.166

 0, 27.210, 31.166

 65, 27.210, 31.166

 65, 27.210, 31.166

 60, 36.391, 32.082

 70, 18.651, 30.520

■ 56, 46.129, 33.315

■ 75, 10.732, 30.061

■ 52, 56.261, 34.919

■ 80, 3.428, 29.669

■ 49, 66.485, 36.871

■ 85, 3.307, 209.846

■ 46, 76.189, 38.957

■ 91, 9.529, 209.661

■ 44, 84.042, 40.532

■ 96, 15.214,
205.509

■ 44, 87.177, 41.256

■ 97, 16.352,
198.419

Harmonies

Complementary

The Complementary color scheme is a pair of colors which are on the opposite of each other on the color wheel.



65, 27.210, 31.166



76, 21.102, 209.805

Rectangle

The Rectangle color scheme consists of four colors that form a rectangle on the color wheel.



65, 27.210, 31.166



65, 27.210, 81.166



65, 27.210, 211.166



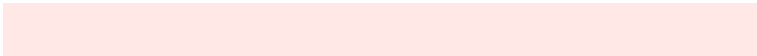
65, 27.210, 261.166

Sweetspot

The Sweet Spot groups the original color and five complimentary colors.



65, 27.208, 31.171



94, 8.355, 29.881



65, 43.728, 329.306



49, 5.734, 29.933



0, 0.000, 0.000



53, 0.007, 296.813

Same Dimension

The Same Dimension uses a secret algorithm to generate beautiful new colors.



65, 27.208, 31.171



75, 40.066, 31.830



74, 26.297, 80.819



40, 3.942, 29.855



35, 73.894, 41.419



5, 16.794, 25.265

Inverse Universe

The Inverse Universe completely reimagines the original color for something new.



76, 21.102, 209.805



91, 29.123, 210.030



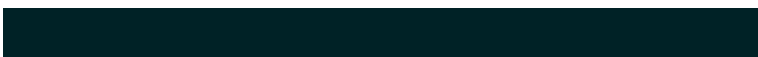
66, 25.269, 271.203



42, 3.710, 209.712



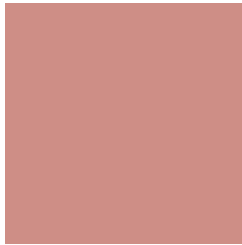
56, 32.098, 216.274



11, 12.159, 211.710

Previews

White Background



This preview shows how the CIELCh color 65, 27.210, 31.166 looks on a white background.

Color Contrast Check

Large Text (above 18pt) WCAG AA × Fail

Any Text WCAG AA × Fail

Large Text (above 18pt) WCAG AAA × Fail

Any Text WCAG AAA × Fail

Black Background



This preview shows how the CIE LCh color 65, 27.210, 31.166 looks on a black background.

Color Contrast Check

Large Text (above 18pt) WCAG AA ✓ Pass

Any Text WCAG AA ✓ Pass

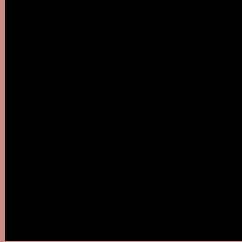
Large Text (above 18pt) WCAG AAA ✓ Pass

Any Text WCAG AAA ✓ Pass

If you want to check with other color combinations, try the [Color Contrast Checker](#).

CIELCh 65, 27.210, 31.166

Background



This preview shows how black text looks on a background with the CIELCh color 65, 27.210, 31.166.

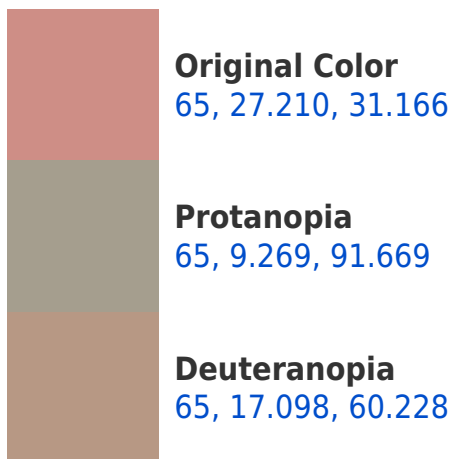


This preview shows how white text looks on a background with the CIELCh color 65, 27.210, 31.166.

Color Blindness Simulation

Color vision deficiency is a very complex topic, and I could not describe the different causes any better than Wikipedia does, so if you want to learn more, you should check out their [article about color blindness](#).

Dichromacy





Tritanopia
65, 27.825, 9.911

Trichromacy



Original Color
65, 27.210, 31.166

Protanomaly
65, 13.564, 52.089

Deuteranomaly
65, 19.890, 45.292

Tritanomaly
65, 27.336, 17.664

Monochromacy



Original Color
65, 27.210, 31.166

Achromatopsia
66, 0.008, 296.813

Achromatomaly
65, 9.670, 30.063

CSS Examples

Text

The CSS property to change the color of the text to CIELCh 65, 27.210, 31.166 is called "color". The color property can be set on classes, ids or directly on the HTML element.

This example shows how text in the color `rgb(206, 142, 134)` looks like.

```
.text, #text, p{  
    color:rgb(206, 142, 134)  
}
```

If you want to add a text shadow in that color use the text-shadow property, you can generate a text shadow directly with our [CSS Text Shadow Generator](#).

Here you see how black text with a 4 pixel rgb(206, 142, 134) colored shadow looks like.

```
.shadow{ text-shadow: 4px 4px 2px rgb(206, 142, 134) }
```

Border

The CSS property to change the border of an element to CIELCh 65, 27.210, 31.166 is called "border". The border property can be set on classes, ids or directly on the HTML element.

This example shows the color as border, it can be applied via the CSS property "border" or "border-color".

```
.border, #border, table{ border:4px solid rgb(206, 142, 134) }
```

If only the border color should be changed use the property `border-color`.

```
.border{ border-color:rgb(206, 142, 134) }
```

If you want to add a box shadow in that color use:

Here you see how a box with a 4 pixel `rgb(206, 142, 134)` colored shadow looks like.

```
.boxshadow{ -moz-box-shadow:4px 4px 4px  
4px rgb(206, 142, 134); -webkit-box-  
shadow:4px 4px 4px 4px rgb(206, 142, 134);  
box-shadow:4px 4px 4px 4px rgb(206, 142,  
134) }
```

Background

The CSS property to change the background color of an element to CIELCh 65, 27.210, 31.166 is called "background". The background property can be set on classes, ids or directly on the HTML element.

```
.background, #background, body{  
background: rgb(206, 142, 134) }
```

If only the background color should be changed can be used:

```
.background{ background-color: rgb(206,  
142, 134) }
```

This example shows the color as background, it is applied via the CSS property "background".

To optimize and compress your CSS code, you can use our [online CSS compressor and optimizer](#) based on csstidy. If you want to create a linear or radial gradient as background or border, check our [CSS Gradient Generator](#).

Hey! You found this booklet interesting? Support Converting Colors with the new Membership Option!

The pro membership hides all ads, plus gives you double the colors in the color bucket, and more awesome pro features!

[Learn more, Memberships starting at \\$2.50/m!](#)

**Follow me
on Twitter!**

@ConvertingColor