

Converting Colors

CIELCh(65, 29.046, 42.630)

Have a look what the booklet for
CIELCh(65, 29.046, 42.630) contains.

CIELCh(65, 28.792, 42.749)	3
<i>Conversions</i>	4
<i>Details</i>	6
<i>Harmonies</i>	11
<i>Previews</i>	20
<i>Color Blindness Simulation</i>	23
<i>CSS Examples</i>	26

Color

CIELCh(65, 28.792, 42.749)

Conversions

Conversions Part 1

Format	Color
Hex	CD8F7C
RGB	205, 143, 124
RGB Percent	80%, 56%, 49%
CMY	0.1964, 0.4395, 0.5140
CMYK	0.00, 0.30, 0.40, 0.20
HSL	14°, 45%, 64%
HSV	14°, 40%, 80%
XYZ	38.6031, 34.0472, 23.5844
YIQ	159.3720, 43.0510, 7.2350

Conversions

Conversions Part 2

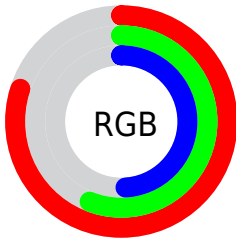
Format	Color
R _Y B	205, 149, 124
Decimal	13471612
CIE Lab	65.00, 21.14, 19.54
CIE LCh	65, 28.792, 42.749
Yxy	34.0472, 0.4011, 0.3538
Android (android.graphics.Color)	4291661692 (0xFFCD8F7C)
YUV	159.3720, -17.4384, 40.0158
Hunter-Lab	58.3500, 15.9794, 16.8807

Details

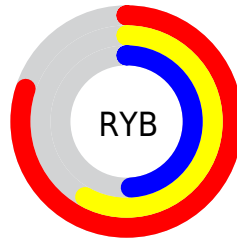
The CIELCh color **65, 28.792, 42.749** is a light color, and the websafe version is hex **CC9999**. A complement of this color would be **72, 21.853, 226.571**, and the grayscale version is **66, 0.008, 296.813**.

A 20% lighter version of the original color is **84, 25.435, 45.042**, and **45, 29.010, 42.435** is the 20% darker color. If you saturate the color by 10%, you get **61, 37.561, 42.907**, and if you desaturate by 10%, it is **69, 20.639, 42.770**.

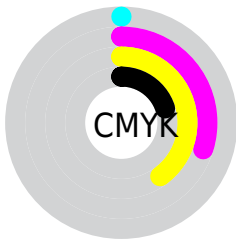
Distribution



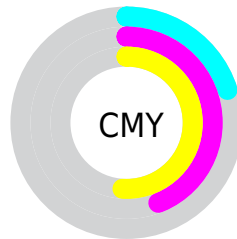
- Red (80%)
- Green (56%)
- Blue (49%)



- Red (80%)
- Yellow (58%)
- Blue (49%)



- Cyan (0%)
- Magenta (30%)
- Yellow (40%)
- Black (20%)



- Cyan (20%)
- Magenta (44%)
- Yellow (51%)

Brightness & Saturation Gradients

These gradients show how the CIELCh color 65, 28.792, 42.749 changes by changing the brightness by 10 percent. The first figure shows a shift by +10% for each color and the second figure -10%.

Similar to the brightness gradients but the following saturation gradients show a change of the CIELCh color 65, 28.792, 42.749 by changing the saturation by 10% instead.

 65, 28.792, 42.749

 65, 28.792, 42.749

 100, 28.792,
42.749

 55, 28.792, 42.749

 85, 28.792, 42.749

 45, 28.792, 42.749

 95, 28.792, 42.749

 35, 28.792, 42.749

 25, 28.792, 42.749

 15, 28.792, 42.749

 5, 28.792, 42.749

 0, 28.792, 42.749

 65, 28.792, 42.749

 65, 28.792, 42.749

 61, 37.561, 42.907

 69, 20.639, 42.770

57, 46.903, 43.248

74, 13.098, 42.917

54, 56.666, 43.766

78, 6.135, 43.142

51, 66.491, 44.355

83, 0.299, 225.397

48, 75.559, 44.696

87, 6.259, 224.085

46, 82.744, 44.459

92, 11.799,
224.500

46, 83.082, 44.474

96, 15.840,
202.691

97, 16.585,
198.404

Harmonies

Complementary

The Complementary color scheme is a pair of colors which are on the opposite of each other on the color wheel.



65, 28.792, 42.749



72, 21.853, 226.571

Rectangle

The Rectangle color scheme consists of four colors that form a rectangle on the color wheel.



65, 28.792, 42.749



65, 28.792, 92.749



65, 28.792, 222.749



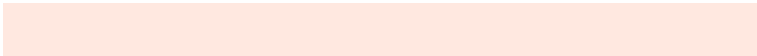
65, 28.792, 272.749

Sweetspot

The Sweet Spot groups the original color and five complimentary colors.



65, 28.791, 42.754



94, 9.332, 43.081



62, 44.781, 334.414



49, 6.223, 43.050



0, 0.000, 0.000



53, 0.007, 296.813

Same Dimension

The Same Dimension uses a secret algorithm to generate beautiful new colors.



65, 28.791, 42.754



76, 42.245, 42.863



75, 33.013, 91.160



41, 3.640, 43.145



37, 70.578, 44.895



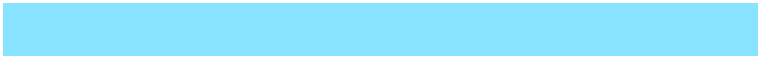
6, 15.740, 32.774

Inverse Universe

The Inverse Universe completely reimagines the original color for something new.



72, 21.853, 226.571



86, 29.949, 227.707



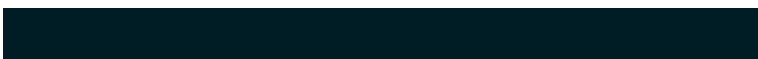
61, 33.827, 282.426



42, 3.441, 224.079



49, 32.567, 242.625



9, 11.759, 232.335

Previews

White Background



This preview shows how the CIELCh color 65, 28.792, 42.749 looks on a white background.

Color Contrast Check

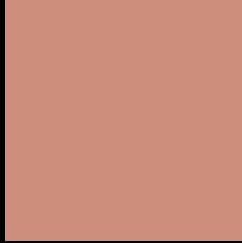
Large Text (above 18pt) WCAG AA × Fail

Any Text WCAG AA × Fail

Large Text (above 18pt) WCAG AAA × Fail

Any Text WCAG AAA × Fail

Black Background



This preview shows how the CIE LCh color 65, 28.792, 42.749 looks on a black background.

Color Contrast Check

Large Text (above 18pt) WCAG AA ✓ Pass

Any Text WCAG AA ✓ Pass

Large Text (above 18pt) WCAG AAA ✓ Pass

Any Text WCAG AAA ✓ Pass

If you want to check with other color combinations, try the [Color Contrast Checker](#).

CIELCh 65, 28.792, 42.749

Background



This preview shows how black text looks on a background with the CIELCh color 65, 28.792, 42.749.

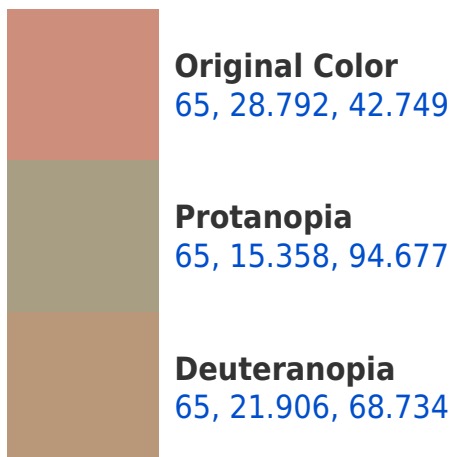


This preview shows how white text looks on a background with the CIELCh color 65, 28.792, 42.749.

Color Blindness Simulation

Color vision deficiency is a very complex topic, and I could not describe the different causes any better than Wikipedia does, so if you want to learn more, you should check out their [article about color blindness](#).

Dichromacy





Tritanopia
65, 27.825, 9.911

Trichromacy



Original Color
65, 28.792, 42.749

Protanomaly
65, 18.243, 68.829

Deuteranomaly
65, 23.546, 57.816

Tritanomaly
65, 27.071, 21.013

Monochromacy



Original Color
65, 28.792, 42.749

Achromatopsia
65, 0.008, 296.813

Achromatomaly
65, 10.002, 42.829

CSS Examples

Text

The CSS property to change the color of the text to CIELCh 65, 28.792, 42.749 is called "color". The color property can be set on classes, ids or directly on the HTML element.

This example shows how text in the color `rgb(205, 143, 124)` looks like.

```
.text, #text, p{  
    color:rgb(205, 143, 124)  
}
```

If you want to add a text shadow in that color use the text-shadow property, you can generate a text shadow directly with our [CSS Text Shadow Generator](#).

Here you see how black text with a 4 pixel rgb(205, 143, 124) colored shadow looks like.

```
.shadow{ text-shadow: 4px 4px 2px rgb(205, 143, 124) }
```

Border

The CSS property to change the border of an element to CIELCh 65, 28.792, 42.749 is called "border". The border property can be set on classes, ids or directly on the HTML element.

This example shows the color as border, it can be applied via the CSS property "border" or "border-color".

```
.border, #border, table{ border:4px solid rgb(205, 143, 124) }
```

If only the border color should be changed use the property `border-color`.

```
.border{ border-color:rgb(205, 143, 124) }
```

If you want to add a box shadow in that color use:

Here you see how a box with a 4 pixel `rgb(205, 143, 124)` colored shadow looks like.

```
.boxshadow{ -moz-box-shadow:4px 4px 4px  
4px rgb(205, 143, 124); -webkit-box-  
shadow:4px 4px 4px 4px rgb(205, 143, 124);  
box-shadow:4px 4px 4px 4px rgb(205, 143,  
124) }
```

Background

The CSS property to change the background color of an element to CIELCh 65, 28.792, 42.749 is called "background". The background property can be set on classes, ids or directly on the HTML element.

```
.background, #background, body{  
background: rgb(205, 143, 124) }
```

If only the background color should be changed can be used:

```
.background{ background-color: rgb(205,  
143, 124) }
```

This example shows the color as background, it is applied via the CSS property "background".

To optimize and compress your CSS code, you can use our [online CSS compressor and optimizer](#) based on csstidy. If you want to create a linear or radial gradient as background or border, check our [CSS Gradient Generator](#).

Hey! You found this booklet interesting? Support Converting Colors with the new Membership Option!

The pro membership hides all ads, plus gives you double the colors in the color bucket, and more awesome pro features!

[Learn more, Memberships starting at \\$2.50/m!](#)

**Follow me
on Twitter!**

@ConvertingColor