

Converting Colors

CIE LCh(65, 30.232, 44.273)

Have a look what the booklet for CIELCh(65, 30.232, 44.273) contains.

CIELCh(65, 30.218, 43.983)	3
<i>Conversions</i>	4
<i>Details</i>	6
<i>Harmonies</i>	11
<i>Previews</i>	20
<i>Color Blindness Simulation</i>	23
<i>CSS Examples</i>	26

Color

CIELCh(65, 30.218, 43.983)

Conversions

Conversions Part 1

Format	Color
Hex	CE8E79
RGB	206, 142, 121
RGB Percent	81%, 56%, 47%
CMY	0.1904, 0.4415, 0.5239
CMYK	0.00, 0.31, 0.41, 0.19
HSL	15°, 47%, 64%
HSV	15°, 41%, 81%
XYZ	38.7912, 34.0472, 22.7456
YIQ	158.7420, 44.8850, 7.0370

Conversions

Conversions Part 2

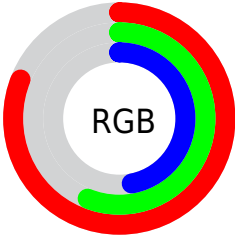
Format	Color
R _Y B	206, 149, 121
Decimal	13536889
CIE Lab	65.00, 21.74, 20.98
CIE LCh	65, 30.218, 43.983
Yxy	34.0472, 0.4058, 0.3562
Android (android.graphics.Color)	4291726969 (0xFFCE8E79)
YUV	158.7420, -18.6068, 41.4453
Hunter-Lab	58.3500, 16.5547, 17.7329

Details

The CIELCh color **65, 30.218, 43.983** is a light color, and the websafe version is hex **CC9999**. A complement of this color would be **72, 22.718, 228.595**, and the grayscale version is **66, 0.008, 296.813**.

A 20% lighter version of the original color is **84, 26.665, 47.561**, and **45, 30.158, 44.034** is the 20% darker color. If you saturate the color by 10%, you get **61, 39.082, 44.080**, and if you desaturate by 10%, it is **69, 21.966, 44.058**.

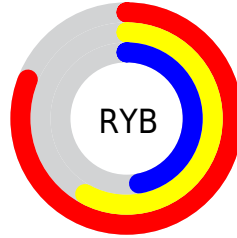
Distribution



Red (81%)

Green (56%)

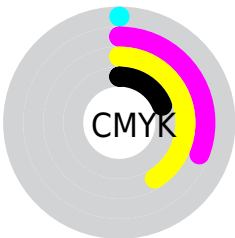
Blue (47%)



Red (81%)

Yellow (58%)

Blue (47%)

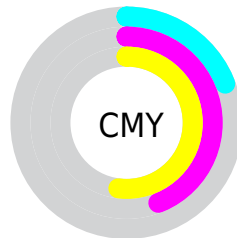


Cyan (0%)

Magenta (31%)

Yellow (41%)

Black (19%)



Cyan (19%)

Magenta (44%)

Yellow (52%)

Brightness & Saturation Gradients

These gradients show how the CIELCh color 65, 30.218, 43.983 changes by changing the brightness by 10 percent. The first figure shows a shift by +10% for each color and the second figure -10%.

Similar to the brightness gradients but the following saturation gradients show a change of the CIELCh color 65, 30.218, 43.983 by changing the saturation by 10% instead.

65, 30.218, 43.983

65, 30.218, 43.983

100, 30.218,
43.983

55, 30.218, 43.983

85, 30.218, 43.983

45, 30.218, 43.983

95, 30.218, 43.983

35, 30.218, 43.983

25, 30.218, 43.983

15, 30.218, 43.983

5, 30.218, 43.983

0, 30.218, 43.983

65, 30.218, 43.983

65, 30.218, 43.983

61, 39.082, 44.080

69, 21.966, 44.058

57, 48.504, 44.347

73, 14.328, 44.258

54, 58.309, 44.765

78, 7.270, 44.542

51, 68.081, 45.200

82, 0.745, 44.291

48, 76.887, 45.285

87, 5.301, 225.580

46, 83.068, 44.922

92, 10.922,
226.027

96, 14.924,
206.013

97, 16.109,
198.435

Harmonies

Complementary

The Complementary color scheme is a pair of colors which are on the opposite of each other on the color wheel.



65, 30.218, 43.983



72, 22.718, 228.595

Rectangle

The Rectangle color scheme consists of four colors that form a rectangle on the color wheel.



65, 30.218, 43.983



65, 30.218, 93.983



65, 30.218, 223.983



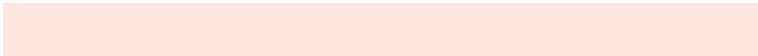
65, 30.218, 273.983

Sweetspot

The Sweet Spot groups the original color and five complimentary colors.



65, 30.217, 43.988



94, 9.283, 44.514



62, 46.871, 334.542



49, 6.190, 44.474



0, 0.000, 0.000



53, 0.007, 296.813

Same Dimension

The Same Dimension uses a secret algorithm to generate beautiful new colors.



65, 30.217, 43.988



75, 44.120, 44.053



75, 34.635, 90.936



41, 3.621, 44.594



37, 70.157, 45.374



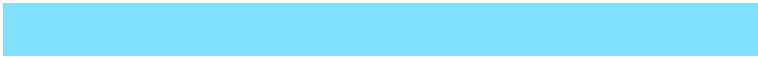
6, 15.645, 33.595

Inverse Universe

The Inverse Universe completely reimagines the original color for something new.



72, 22.718, 228.595



85, 30.903, 229.923



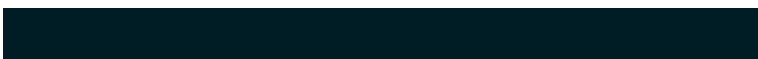
60, 35.553, 282.793



42, 3.427, 225.638



49, 32.966, 245.232



9, 11.790, 234.563

Previews

White Background



This preview shows how the CIELCh color 65, 30.218, 43.983 looks on a white background.

Color Contrast Check

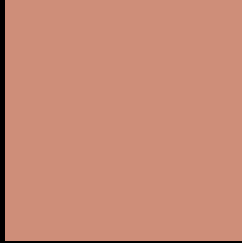
Large Text (above 18pt) WCAG AA × Fail

Any Text WCAG AA × Fail

Large Text (above 18pt) WCAG AAA × Fail

Any Text WCAG AAA × Fail

Black Background



This preview shows how the CIELCh color 65, 30.218, 43.983 looks on a black background.

Color Contrast Check

Large Text (above 18pt) WCAG AA ✓ Pass

Any Text WCAG AA ✓ Pass

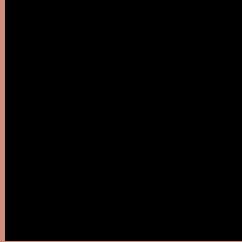
Large Text (above 18pt) WCAG AAA ✓ Pass

Any Text WCAG AAA ✓ Pass

If you want to check with other color combinations, try the [Color Contrast Checker](#).

CIELCh 65, 30.218, 43.983

Background



This preview shows how black text looks on a background with the CIELCh color 65, 30.218, 43.983.



This preview shows how white text looks on a background with the CIELCh color 65, 30.218, 43.983.

Color Blindness Simulation

Color vision deficiency is a very complex topic, and I could not describe the different causes any better than Wikipedia does, so if you want to learn more, you should check out their [article about color blindness](#).

Dichromacy



Original Color

65, 30.218, 43.983

Protanopia

65, 16.431, 95.427

Deuteranopia

65, 23.084, 69.468



Tritanopia
65, 28.586, 11.457

Trichromacy



Original Color
65, 30.218, 43.983

Protanomaly
65, 18.993, 68.809

Deuteranomaly
65, 24.662, 59.009

Tritanomaly
65, 28.071, 23.347

Monochromacy



Original Color
65, 30.218, 43.983

Achromatopsia
65, 0.008, 296.813

Achromatomaly
65, 10.253, 45.597

CSS Examples

Text

The CSS property to change the color of the text to CIELCh 65, 30.218, 43.983 is called "color". The color property can be set on classes, ids or directly on the HTML element.

This example shows how text in the color `rgb(206, 142, 121)` looks like.

```
.text, #text, p{  
    color:rgb(206, 142, 121)  
}
```

If you want to add a text shadow in that color use the text-shadow property, you can generate a text shadow directly with our [CSS Text Shadow Generator](#).

Here you see how black text with a 4 pixel rgb(206, 142, 121) colored shadow looks like.

```
.shadow{ text-shadow: 4px 4px 2px rgb(206, 142, 121) }
```

Border

The CSS property to change the border of an element to CIELCh 65, 30.218, 43.983 is called "border". The border property can be set on classes, ids or directly on the HTML element.

This example shows the color as border, it can be applied via the CSS property "border" or "border-color".

```
.border, #border, table{ border:4px solid rgb(206, 142, 121) }
```

If only the border color should be changed use the property border-color.

```
.border{ border-color:rgb(206, 142, 121) }
```

If you want to add a box shadow in that color use:

Here you see how a box with a 4 pixel rgb(206, 142, 121) colored shadow looks like.

```
.boxshadow{ -moz-box-shadow:4px 4px 4px  
4px rgb(206, 142, 121); -webkit-box-  
shadow:4px 4px 4px 4px rgb(206, 142, 121);  
box-shadow:4px 4px 4px 4px rgb(206, 142,  
121) }
```

Background

The CSS property to change the background color of an element to CIELCh 65, 30.218, 43.983 is called "background". The background property can be set on classes, ids or directly on the HTML element.

```
.background, #background, body{  
background: rgb(206, 142, 121) }
```

If only the background color should be changed can be used:

```
.background{ background-color: rgb(206,  
142, 121) }
```

This example shows the color as background, it is applied via the CSS property "background".

To optimize and compress your CSS code, you can use our [online CSS compressor and optimizer](#) based on csstidy. If you want to create a linear or radial gradient as background or border, check our [CSS Gradient Generator](#).

Hey! You found this booklet interesting? Support Converting Colors with the new Membership Option!

The pro membership hides all ads, plus gives you double the colors in the color bucket, and more awesome pro features!

[Learn more, Memberships starting at \\$2.50/m!](#)

**Follow me
on Twitter!**

@ConvertingColor