

Converting Colors

CIELCh(65, 32.469, 67.956)

Have a look what the booklet for
CIELCh(65, 32.469, 67.956) contains.

CIELCh(65, 32.823, 68.483)	3
<i>Conversions</i>	4
<i>Details</i>	6
<i>Harmonies</i>	11
<i>Previews</i>	20
<i>Color Blindness Simulation</i>	23
<i>CSS Examples</i>	26

Color

CIELCh(65, 32.823, 68.483)

Conversions

Conversions Part 1

Format	Color
Hex	C49568
RGB	196, 149, 104
RGB Percent	77%, 58%, 41%
CMY	0.2330, 0.4172, 0.5936
CMYK	0.00, 0.24, 0.47, 0.23
HSL	29°, 44%, 59%
HSV	29°, 47%, 77%
XYZ	35.8251, 34.0472, 17.6839
YIQ	157.9230, 42.4570, -4.0310

Conversions

Conversions Part 2

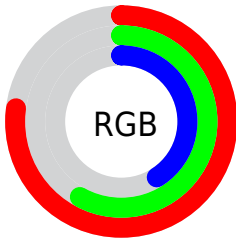
Format	Color
RYB	196, 192, 104
Decimal	12883304
CIELab	65.00, 12.04, 30.54
CIElCh	65, 32.823, 68.483
Yxy	34.0472, 0.4092, 0.3889
Android (android.graphics.Color)	4291073384 (0xFFC49568)
YUV	157.9230, -26.5840, 33.3935
Hunter-Lab	58.3500, 7.4812, 22.8761

Details

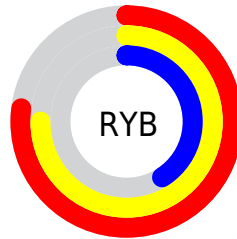
The CIELCh color **65, 32.823, 68.483** is a light color, and the websafe version is hex **CC9966**. A complement of this color would be **61, 28.391, 262.814**, and the grayscale version is **65, 0.008, 296.813**.

A 20% lighter version of the original color is **85, 32.580, 68.457**, and **45, 32.761, 68.095** is the 20% darker color. If you saturate the color by 10%, you get **62, 40.695, 67.235**, and if you desaturate by 10%, it is **68, 25.227, 69.724**.

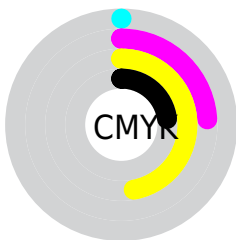
Distribution



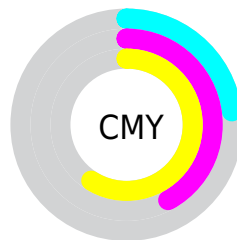
- Red (77%)
- Green (58%)
- Blue (41%)



- Red (77%)
- Yellow (75%)
- Blue (41%)



- Cyan (0%)
- Magenta (24%)
- Yellow (47%)
- Black (23%)



- Cyan (23%)
- Magenta (42%)
- Yellow (59%)

Brightness & Saturation Gradients

These gradients show how the CIELCh color 65, 32.823, 68.483 changes by changing the brightness by 10 percent. The first figure shows a shift by +10% for each color and the second figure -10%.

Similar to the brightness gradients but the following saturation gradients show a change of the CIELCh color 65, 32.823, 68.483 by changing the saturation by 10% instead.

65, 32.823, 68.483

65, 32.823, 68.483

100, 32.823,
68.483

55, 32.823, 68.483

85, 32.823, 68.483

45, 32.823, 68.483

95, 32.823, 68.483

35, 32.823, 68.483

25, 32.823, 68.483

15, 32.823, 68.483

5, 32.823, 68.483

0, 32.823, 68.483

65, 32.823, 68.483

65, 32.823, 68.483

62, 40.695, 67.235

68, 25.227, 69.724

60, 48.696, 65.930

71, 17.963, 70.952

57, 56.497, 64.482

74, 11.039, 72.166

55, 63.465, 62.692

77, 4.439, 73.328

52, 68.719, 60.262

80, 1.860, 254.800

52, 70.193, 59.555

83, 7.890, 255.808

86, 13.678,
256.914

89, 17.179,
252.588

92, 16.164,
230.647

Harmonies

Complementary

The Complementary color scheme is a pair of colors which are on the opposite of each other on the color wheel.



65, 32.823, 68.483



61, 28.391, 262.814

Rectangle

The Rectangle color scheme consists of four colors that form a rectangle on the color wheel.



65, 32.823, 68.483



65, 32.823, 118.483



65, 32.823, 248.483



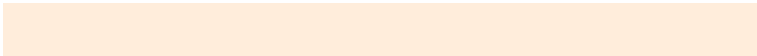
65, 32.823, 298.483

Sweetspot

The Sweet Spot groups the original color and five complimentary colors.



65, 32.823, 68.488



95, 11.192, 72.499



56, 43.413, 347.546



50, 7.768, 72.237



0, 0.000, 0.000



53, 0.007, 296.813

Same Dimension

The Same Dimension uses a secret algorithm to generate beautiful new colors.



65, 32.823, 68.488



80, 49.567, 67.251



77, 46.943, 104.974



39, 3.584, 73.066



43, 60.475, 60.151



6, 11.474, 57.022

Inverse Universe

The Inverse Universe completely reimagines the original color for something new.



61, 28.391, 262.814



73, 41.520, 265.674



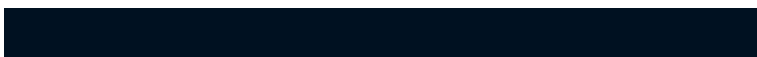
48, 53.100, 296.232



39, 3.502, 255.507



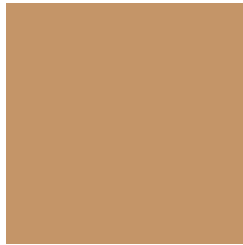
35, 49.515, 282.466



5, 12.674, 268.485

Previews

White Background



This preview shows how the CIELCh color 65, 32.823, 68.483 looks on a white background.

Color Contrast Check

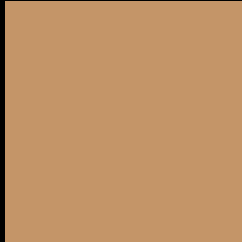
Large Text (above 18pt) WCAG AA × Fail

Any Text WCAG AA × Fail

Large Text (above 18pt) WCAG AAA × Fail

Any Text WCAG AAA × Fail

Black Background



This preview shows how the CIE LCh color 65, 32.823, 68.483 looks on a black background.

Color Contrast Check

Large Text (above 18pt) WCAG AA ✓ Pass

Any Text WCAG AA ✓ Pass

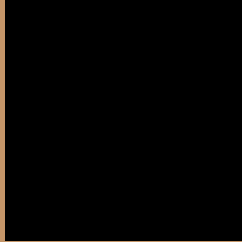
Large Text (above 18pt) WCAG AAA ✓ Pass

Any Text WCAG AAA ✓ Pass

If you want to check with other color combinations, try the [Color Contrast Checker](#).

CIELCh 65, 32.823, 68.483

Background



This preview shows how black text looks on a background with the CIELCh color 65, 32.823, 68.483.



This preview shows how white text looks on a background with the CIELCh color 65, 32.823, 68.483.

Color Blindness Simulation

Color vision deficiency is a very complex topic, and I could not describe the different causes any better than Wikipedia does, so if you want to learn more, you should check out their [article about color blindness](#).

Dichromacy



Original Color

65, 32.823, 68.483

Protanopia

65, 28.536, 95.859

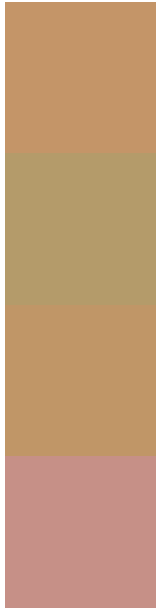
Deuteranopia

65, 31.890, 74.827



Tritanopia
65, 23.781, 7.214

Trichromacy



Original Color
65, 32.823, 68.483

Protanomaly
65, 29.190, 85.436

Deuteranomaly
65, 32.258, 72.449

Tritanomaly
65, 23.107, 33.777

Monochromacy



Original Color
65, 32.823, 68.483

Achromatopsia
65, 0.008, 296.813

Achromatomaly
65, 11.695, 73.000

CSS Examples

Text

The CSS property to change the color of the text to CIELCh 65, 32.823, 68.483 is called "color". The color property can be set on classes, ids or directly on the HTML element.

This example shows how text in the color `rgb(196, 149, 104)` looks like.

```
.text, #text, p{  
    color:rgb(196, 149, 104)  
}
```

If you want to add a text shadow in that color use the text-shadow property, you can generate a text shadow directly with our [CSS Text Shadow Generator](#).

Here you see how black text with a 4 pixel rgb(196, 149, 104) colored shadow looks like.

```
.shadow{ text-shadow: 4px 4px 2px rgb(196, 149, 104) }
```

Border

The CSS property to change the border of an element to CIELCh 65, 32.823, 68.483 is called "border". The border property can be set on classes, ids or directly on the HTML element.

This example shows the color as border, it can be applied via the CSS property "border" or "border-color".

```
.border, #border, table{ border:4px solid rgb(196, 149, 104) }
```

If only the border color should be changed use the property `border-color`.

```
.border{ border-color:rgb(196, 149, 104) }
```

If you want to add a box shadow in that color use:

Here you see how a box with a 4 pixel `rgb(196, 149, 104)` colored shadow looks like.

```
.boxshadow{ -moz-box-shadow:4px 4px 4px  
4px rgb(196, 149, 104); -webkit-box-  
shadow:4px 4px 4px 4px rgb(196, 149, 104);  
box-shadow:4px 4px 4px 4px rgb(196, 149,  
104) }
```

Background

The CSS property to change the background color of an element to CIELCh 65, 32.823, 68.483 is called "background". The background property can be set on classes, ids or directly on the HTML element.

```
.background, #background, body{  
background: rgb(196, 149, 104) }
```

If only the background color should be changed can be used:

```
.background{ background-color: rgb(196,  
149, 104) }
```

This example shows the color as background, it is applied via the CSS property "background".

To optimize and compress your CSS code, you can use our [online CSS compressor and optimizer](#) based on csstidy. If you want to create a linear or radial gradient as background or border, check our [CSS Gradient Generator](#).

Hey! You found this booklet interesting? Support Converting Colors with the new Membership Option!

The pro membership hides all ads, plus gives you double the colors in the color bucket, and more awesome pro features!

[Learn more, Memberships starting at \\$2.50/m!](#)

**Follow me
on Twitter!**

@ConvertingColor