

Converting Colors

CIELCh(65, 33.177, 66.378)

Have a look what the booklet for
CIELCh(65, 33.177, 66.378) contains.

CIELCh(65, 33.037, 66.827)	3
<i>Conversions</i>	4
<i>Details</i>	6
<i>Harmonies</i>	11
<i>Previews</i>	20
<i>Color Blindness Simulation</i>	23
<i>CSS Examples</i>	26

Color

CIELCh(65, 33.037, 66.827)

Conversions

Conversions Part 1

Format	Color
Hex	C59468
RGB	197, 148, 104
RGB Percent	77%, 58%, 41%
CMY	0.2275, 0.4196, 0.5922
CMYK	0.00, 0.25, 0.47, 0.23
HSL	28°, 44%, 59%
HSV	28°, 47%, 77%
XYZ	36.1120, 34.0472, 17.7638
YIQ	157.6350, 43.3280, -3.2960

Conversions

Conversions Part 2

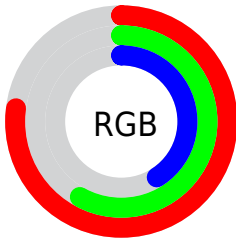
Format	Color
R_{YB}	197, 188, 104
Decimal	12948584
CIE _{Lab}	65.00, 13.00, 30.37
CIE _{LCh}	65, 33.037, 66.827
Yxy	34.0472, 0.4107, 0.3872
Android (android.graphics.Color)	4291138664 (0xFFC59468)
YUV	157.6350, -26.4421, 34.5231
Hunter-Lab	58.3500, 8.3589, 22.7950

Details

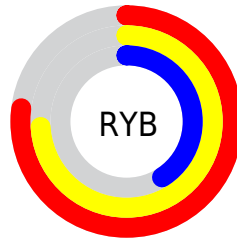
The CIELCh color **65, 33.037, 66.827** is a light color, and the websafe version is hex **CC9966**. A complement of this color would be **61, 28.140, 261.002**, and the grayscale version is **65, 0.008, 296.813**.

A 20% lighter version of the original color is **85, 32.762, 66.870**, and **45, 33.035, 66.341** is the 20% darker color. If you saturate the color by 10%, you get **62, 40.998, 65.632**, and if you desaturate by 10%, it is **68, 25.380, 68.023**.

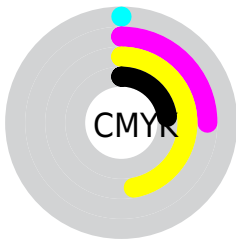
Distribution



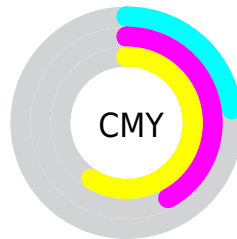
- Red (77%)
- Green (58%)
- Blue (41%)



- Red (77%)
- Yellow (74%)
- Blue (41%)



- Cyan (0%)
- Magenta (25%)
- Yellow (47%)
- Black (23%)



- Cyan (23%)
- Magenta (42%)
- Yellow (59%)

Brightness & Saturation Gradients

These gradients show how the CIELCh color 65, 33.037, 66.827 changes by changing the brightness by 10 percent. The first figure shows a shift by +10% for each color and the second figure -10%.

Similar to the brightness gradients but the following saturation gradients show a change of the CIELCh color 65, 33.037, 66.827 by changing the saturation by 10% instead.

65, 33.037, 66.827

65, 33.037, 66.827

100, 33.037,
66.827

55, 33.037, 66.827

85, 33.037, 66.827

45, 33.037, 66.827

95, 33.037, 66.827

35, 33.037, 66.827

25, 33.037, 66.827

15, 33.037, 66.827

5, 33.037, 66.827

0, 33.037, 66.827

65, 33.037, 66.827

65, 33.037, 66.827

62, 40.998, 65.632

68, 25.380, 68.023

59, 49.120, 64.387

71, 18.081, 69.213

57, 57.074, 63.003

74, 11.143, 70.394

54, 64.218, 61.274

77, 4.549, 71.530

52, 69.654, 58.893

80, 1.730, 253.006

52, 71.091, 58.255

84, 7.724, 253.976

87, 13.465,
255.067

90, 16.421,
248.547

93, 15.935,
224.883

Harmonies

Complementary

The Complementary color scheme is a pair of colors which are on the opposite of each other on the color wheel.



65, 33.037, 66.827



61, 28.140, 261.002

Rectangle

The Rectangle color scheme consists of four colors that form a rectangle on the color wheel.



65, 33.037, 66.827



65, 33.037, 116.827



65, 33.037, 246.827



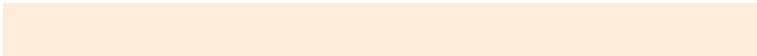
65, 33.037, 296.827

Sweetspot

The Sweet Spot groups the original color and five complimentary colors.



65, 33.037, 66.832



95, 11.093, 70.743



56, 44.245, 346.593



50, 7.701, 70.488



0, 0.000, 0.000



53, 0.007, 296.813

Same Dimension

The Same Dimension uses a secret algorithm to generate beautiful new colors.



65, 33.037, 66.832



79, 50.444, 65.551



77, 46.715, 104.175



40, 3.627, 71.293



43, 61.624, 58.820



7, 12.957, 54.297

Inverse Universe

The Inverse Universe completely reimagines the original color for something new.



61, 28.140, 261.002



73, 41.329, 264.121



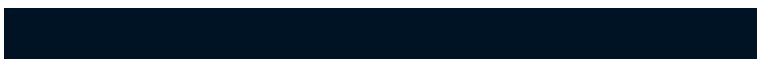
49, 52.673, 295.657



40, 3.535, 253.705



37, 48.556, 280.832



5, 13.589, 267.868

Previews

White Background



This preview shows how the CIELCh color 65, 33.037, 66.827 looks on a white background.

Color Contrast Check

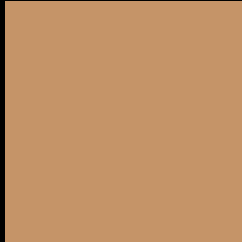
Large Text (above 18pt) WCAG AA × Fail

Any Text WCAG AA × Fail

Large Text (above 18pt) WCAG AAA × Fail

Any Text WCAG AAA × Fail

Black Background



This preview shows how the CIELCh color 65, 33.037, 66.827 looks on a black background.

Color Contrast Check

Large Text (above 18pt) WCAG AA ✓ Pass

Any Text WCAG AA ✓ Pass

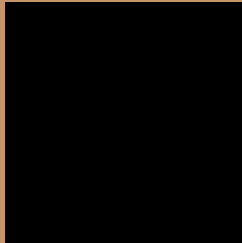
Large Text (above 18pt) WCAG AAA ✓ Pass

Any Text WCAG AAA ✓ Pass

If you want to check with other color combinations, try the [Color Contrast Checker](#).

CIELCh 65, 33.037, 66.827

Background



This preview shows how black text looks on a background with the CIELCh color 65, 33.037, 66.827.



This preview shows how white text looks on a background with the CIELCh color 65, 33.037, 66.827.

Color Blindness Simulation

Color vision deficiency is a very complex topic, and I could not describe the different causes any better than Wikipedia does, so if you want to learn more, you should check out their [article about color blindness](#).

Dichromacy



Original Color

65, 33.037, 66.827

Protanopia

65, 28.008, 95.722

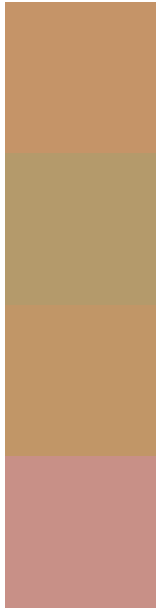
Deuteranopia

65, 31.890, 74.827



Tritanopia
65, 24.172, 7.509

Trichromacy



Original Color
65, 33.037, 66.827

Protanomaly
65, 28.392, 83.970

Deuteranomaly
65, 32.532, 71.832

Tritanomaly
65, 23.943, 33.412

Monochromacy



Original Color
65, 33.037, 66.827

Achromatopsia
65, 0.008, 296.813

Achromatomaly
65, 11.517, 69.834

CSS Examples

Text

The CSS property to change the color of the text to CIELCh 65, 33.037, 66.827 is called "color". The color property can be set on classes, ids or directly on the HTML element.

This example shows how text in the color `rgb(197, 148, 104)` looks like.

```
.text, #text, p{  
    color:rgb(197, 148, 104)  
}
```

If you want to add a text shadow in that color use the text-shadow property, you can generate a text shadow directly with our [CSS Text Shadow Generator](#).

Here you see how black text with a 4 pixel rgb(197, 148, 104) colored shadow looks like.

```
.shadow{ text-shadow: 4px 4px 2px rgb(197, 148, 104) }
```

Border

The CSS property to change the border of an element to CIELCh 65, 33.037, 66.827 is called "border". The border property can be set on classes, ids or directly on the HTML element.

This example shows the color as border, it can be applied via the CSS property "border" or "border-color".

```
.border, #border, table{ border:4px solid rgb(197, 148, 104) }
```

If only the border color should be changed use the property `border-color`.

```
.border{ border-color:rgb(197, 148, 104) }
```

If you want to add a box shadow in that color use:

Here you see how a box with a 4 pixel `rgb(197, 148, 104)` colored shadow looks like.

```
.boxshadow{ -moz-box-shadow:4px 4px 4px 4px rgb(197, 148, 104); -webkit-box-shadow:4px 4px 4px 4px rgb(197, 148, 104); box-shadow:4px 4px 4px 4px rgb(197, 148, 104) }
```

Background

The CSS property to change the background color of an element to CIELCh 65, 33.037, 66.827 is called "background". The background property can be set on classes, ids or directly on the HTML element.

```
.background, #background, body{  
background: rgb(197, 148, 104) }
```

If only the background color should be changed can be used:

```
.background{ background-color: rgb(197,  
148, 104) }
```

This example shows the color as background, it is applied via the CSS property "background".

To optimize and compress your CSS code, you can use our [online CSS compressor and optimizer](#) based on csstidy. If you want to create a linear or radial gradient as background or border, check our [CSS Gradient Generator](#).

Hey! You found this booklet interesting? Support Converting Colors with the new Membership Option!

The pro membership hides all ads, plus gives you double the colors in the color bucket, and more awesome pro features!

[Learn more, Memberships starting at \\$2.50/m!](#)

**Follow me
on Twitter!**

@ConvertingColor