

Converting Colors

CIELCh(65, 36.678, 16.039)

Have a look what the booklet for
CIELCh(65, 36.678, 16.039) contains.

CIELCh(65, 36.978, 15.928)	3
<i>Conversions</i>	4
<i>Details</i>	6
<i>Harmonies</i>	11
<i>Previews</i>	20
<i>Color Blindness Simulation</i>	23
<i>CSS Examples</i>	26

Color

CIELCh(65, 36.978, 15.928)

Conversions

Conversions Part 1

Format	Color
Hex	DE848D
RGB	222, 132, 141
RGB Percent	87%, 52%, 55%
CMY	0.1286, 0.4816, 0.4463
CMYK	0.00, 0.41, 0.36, 0.13
HSL	354°, 58%, 69%
HSV	354°, 41%, 87%
XYZ	43.2895, 34.0472, 29.5633
YIQ	159.9360, 50.7510, 21.8790

Conversions

Conversions Part 2

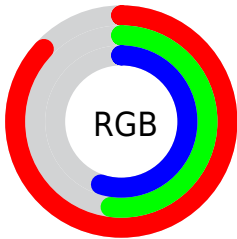
Format	Color
R _Y B	222, 132, 141
Decimal	14582925
CIE Lab	65.00, 35.56, 10.15
CIE LCh	65, 36.978, 15.928
Yxy	34.0472, 0.4050, 0.3185
Android (android.graphics.Color)	4292773005 (0xFFDE848D)
YUV	159.9360, -9.3354, 54.4301
Hunter-Lab	58.3500, 30.3156, 10.8054

Details

The CIELCh color **65, 36.978, 15.928** is a light color, and the websafe version is hex **FF9999**. A complement of this color would be **83, 29.332, 187.981**, and the grayscale version is **66, 0.008, 296.813**.

A 20% lighter version of the original color is **82, 26.688, 11.523**, and **45, 36.669, 16.195** is the 20% darker color. If you saturate the color by 10%, you get **60, 47.079, 17.962**, and if you desaturate by 10%, it is **70, 27.115, 14.330**.

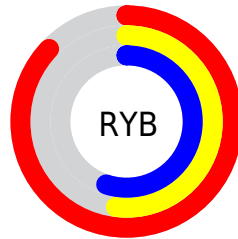
Distribution



Red (87%)

Green (52%)

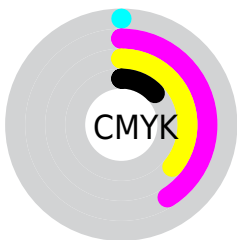
Blue (55%)



Red (87%)

Yellow (52%)

Blue (55%)

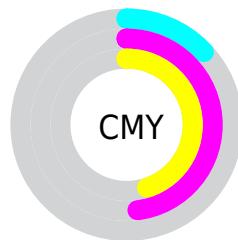


Cyan (0%)

Magenta (41%)

Yellow (36%)

Black (13%)



Cyan (13%)

Magenta (48%)

Yellow (45%)

Brightness & Saturation Gradients

These gradients show how the CIELCh color 65, 36.978, 15.928 changes by changing the brightness by 10 percent. The first figure shows a shift by +10% for each color and the second figure -10%.

Similar to the brightness gradients but the following saturation gradients show a change of the CIELCh color 65, 36.978, 15.928 by changing the saturation by 10% instead.

 65, 36.978, 15.928

 65, 36.978, 15.928

 100, 36.978,
15.928

 55, 36.978, 15.928

 85, 36.978, 15.928

 45, 36.978, 15.928

 95, 36.978, 15.928

 35, 36.978, 15.928

 25, 36.978, 15.928

 15, 36.978, 15.928


 5, 36.978, 15.928

 0, 36.978, 15.928

 65, 36.978, 15.928

 65, 36.978, 15.928

 60, 47.079, 17.962

 70, 27.115, 14.330

■ 56, 57.146, 20.552

■ 76, 17.681, 13.046

■ 52, 66.833, 23.828

■ 82, 8.771, 11.983

■ 49, 75.803, 27.832

■ 88, 0.413, 9.799

■ 47, 83.741, 32.359

■ 94, 7.402, 190.570

■ 46, 89.951, 36.387

■ 98, 11.083,
198.766

Harmonies

Complementary

The Complementary color scheme is a pair of colors which are on the opposite of each other on the color wheel.



65, 36.978, 15.928



83, 29.332, 187.981

Rectangle

The Rectangle color scheme consists of four colors that form a rectangle on the color wheel.



65, 36.978, 15.928



65, 36.978, 65.928



65, 36.978, 195.928



65, 36.978, 245.928

Sweetspot

The Sweet Spot groups the original color and five complimentary colors.



65, 36.975, 15.931



92, 11.256, 12.142



67, 56.067, 323.634



48, 7.499, 12.276



0, 0.000, 0.000



53, 0.007, 296.813

Same Dimension

The Same Dimension uses a secret algorithm to generate beautiful new colors.



65, 36.975, 15.931



69, 50.964, 17.707



73, 30.394, 59.883



44, 4.760, 11.878



36, 74.937, 35.687



6, 25.347, 16.728

Inverse Universe

The Inverse Universe completely reimagines the original color for something new.



65, 36.975, 15.931



69, 50.964, 17.707



73, 25.085, 250.200



44, 4.760, 11.878



36, 74.937, 35.687



6, 25.347, 16.728

Previews

White Background



This preview shows how the CIELCh color 65, 36.978, 15.928 looks on a white background.

Color Contrast Check

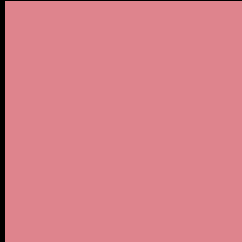
Large Text (above 18pt) WCAG AA × Fail

Any Text WCAG AA × Fail

Large Text (above 18pt) WCAG AAA × Fail

Any Text WCAG AAA × Fail

Black Background



This preview shows how the CIELCh color 65, 36.978, 15.928 looks on a black background.

Color Contrast Check

Large Text (above 18pt) WCAG AA ✓ Pass

Any Text WCAG AA ✓ Pass

Large Text (above 18pt) WCAG AAA ✓ Pass

Any Text WCAG AAA ✓ Pass

If you want to check with other color combinations, try the [Color Contrast Checker](#).

CIELCh 65, 36.978, 15.928

Background



This preview shows how black text looks on a background with the CIELCh color 65, 36.978, 15.928.



This preview shows how white text looks on a background with the CIELCh color 65, 36.978, 15.928.

Color Blindness Simulation

Color vision deficiency is a very complex topic, and I could not describe the different causes any better than Wikipedia does, so if you want to learn more, you should check out their [article about color blindness](#).

Dichromacy



Original Color

65, 36.978, 15.928

Protanopia

65, 2.215, 49.340

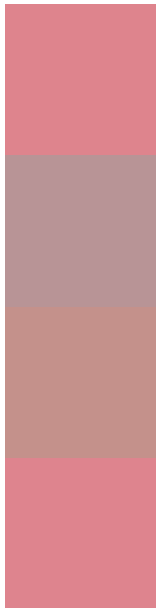
Deuteranopia

65, 14.246, 53.000



Tritanopia
65, 36.950, 15.083

Trichromacy



Original Color
65, 36.978, 15.928

Protanomaly
65, 14.379, 16.400

Deuteranomaly
65, 21.319, 30.233

Tritanomaly
65, 36.950, 15.083

Monochromacy



Original Color
65, 36.978, 15.928

Achromatopsia
66, 0.008, 296.813

Achromatomaly
65, 13.150, 13.448

CSS Examples

Text

The CSS property to change the color of the text to CIELCh 65, 36.978, 15.928 is called "color". The color property can be set on classes, ids or directly on the HTML element.

This example shows how text in the color `rgb(222, 132, 141)` looks like.

```
.text, #text, p{  
    color:rgb(222, 132, 141)  
}
```

If you want to add a text shadow in that color use the text-shadow property, you can generate a text shadow directly with our [CSS Text Shadow Generator](#).

Here you see how black text with a 4 pixel rgb(222, 132, 141) colored shadow looks like.

```
.shadow{ text-shadow: 4px 4px 2px rgb(222, 132, 141) }
```

Border

The CSS property to change the border of an element to CIELCh 65, 36.978, 15.928 is called "border". The border property can be set on classes, ids or directly on the HTML element.

This example shows the color as border, it can be applied via the CSS property "border" or "border-color".

```
.border, #border, table{ border:4px solid rgb(222, 132, 141) }
```

If only the border color should be changed use the property border-color.

```
.border{ border-color:rgb(222, 132, 141) }
```

If you want to add a box shadow in that color use:

Here you see how a box with a 4 pixel rgb(222, 132, 141) colored shadow looks like.

```
.boxshadow{ -moz-box-shadow:4px 4px 4px  
4px rgb(222, 132, 141); -webkit-box-  
shadow:4px 4px 4px 4px rgb(222, 132, 141);  
box-shadow:4px 4px 4px 4px rgb(222, 132,  
141) }
```

Background

The CSS property to change the background color of an element to CIELCh 65, 36.978, 15.928 is called "background". The background property can be set on classes, ids or directly on the HTML element.

```
.background, #background, body{  
background: rgb(222, 132, 141) }
```

If only the background color should be changed can be used:

```
.background{ background-color: rgb(222,  
132, 141) }
```

This example shows the color as background, it is applied via the CSS property "background".

To optimize and compress your CSS code, you can use our [online CSS compressor and optimizer](#) based on csstidy. If you want to create a linear or radial gradient as background or border, check our [CSS Gradient Generator](#).

Hey! You found this booklet interesting? Support Converting Colors with the new Membership Option!

The pro membership hides all ads, plus gives you double the colors in the color bucket, and more awesome pro features!

[Learn more, Memberships starting at \\$2.50/m!](#)

**Follow me
on Twitter!**

@ConvertingColor