

Converting Colors

CIELCh(65, 38.427, 72.496)

Have a look what the booklet for
CIELCh(65, 38.427, 72.496) contains.

CIELCh(65, 38.571, 72.925)	3
<i>Conversions</i>	4
<i>Details</i>	6
<i>Harmonies</i>	11
<i>Previews</i>	20
<i>Color Blindness Simulation</i>	23
<i>CSS Examples</i>	26

Color

CIELCh(65, 38.571, 72.925)

Conversions

Conversions Part 1

Format	Color
Hex	C5955C
RGB	197, 149, 92
RGB Percent	77%, 58%, 36%
CMY	0.2283, 0.4164, 0.6399
CMYK	0.00, 0.24, 0.53, 0.23
HSL	33°, 47%, 57%
HSV	33°, 53%, 77%
XYZ	35.6132, 34.0472, 14.7792
YIQ	156.8540, 46.9050, -7.5510

Conversions

Conversions Part 2

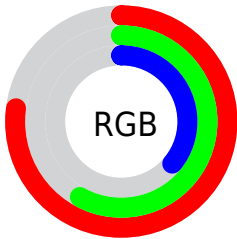
Format	Color
RYB	180, 197, 92
Decimal	12948828
CIELab	65.00, 11.33, 36.87
CIElCh	65, 38.571, 72.925
Yxy	34.0472, 0.4218, 0.4032
Android (android.graphics.Color)	4291138908 (0xFFC5955C)
YUV	156.8540, -31.9730, 35.2080
Hunter-Lab	58.3500, 6.8330, 25.8277

Details

The CIELCh color **65, 38.571, 72.925** is a dark color, and the websafe version is hex **CC9966**. The color can be described as middle muted orange. A complement of this color would be **57, 34.528, 270.375**, and the grayscale version is **65, 0.008, 296.813**.

A 20% lighter version of the original color is **85, 38.484, 73.421**, and **45, 38.366, 72.806** is the 20% darker color. If you saturate the color by 10%, you get **63, 46.425, 71.505**, and if you desaturate by 10%, it is **68, 30.800, 74.297**.

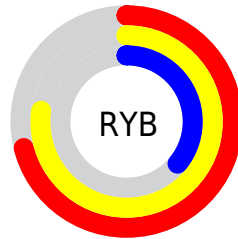
Distribution



Red (77%)

Green (58%)

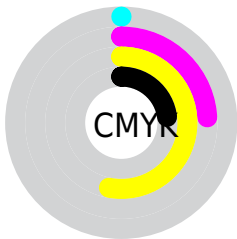
Blue (36%)



Red (71%)

Yellow (77%)

Blue (36%)

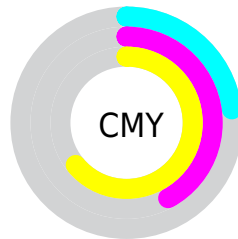


Cyan (0%)

Magenta (24%)

Yellow (53%)

Black (23%)



Cyan (23%)

Magenta (42%)

Yellow (64%)

Brightness & Saturation Gradients

These gradients show how the CIELCh color 65, 38.571, 72.925 changes by changing the brightness by 10 percent. The first figure shows a shift by +10% for each color and the second figure -10%.

Similar to the brightness gradients but the following saturation gradients show a change of the CIELCh color 65, 38.571, 72.925 by changing the saturation by 10% instead.

65, 38.571, 72.925

65, 38.571, 72.925

100, 38.571,
72.925

55, 38.571, 72.925

85, 38.571, 72.925

45, 38.571, 72.925

95, 38.571, 72.925

35, 38.571, 72.925

25, 38.571, 72.925

15, 38.571, 72.925

5, 38.571, 72.925

0, 38.571, 72.925

65, 38.571, 72.925

65, 38.571, 72.925

63, 46.425, 71.505

68, 30.800, 74.297

60, 54.082, 69.962

70, 23.243, 75.634

58, 61.009, 68.161

73, 15.952, 76.943

56, 66.360, 65.844

76, 8.937, 78.217

54, 69.095, 64.072

78, 2.189, 79.361

81, 4.310, 260.811

84, 10.584,
261.946

87, 16.655,
263.070

90, 16.697,
251.070

Harmonies

Complementary

The Complementary color scheme is a pair of colors which are on the opposite of each other on the color wheel.



65, 38.571, 72.925



57, 34.528, 270.375

Rectangle

The Rectangle color scheme consists of four colors that form a rectangle on the color wheel.



65, 38.571, 72.925



65, 38.571, 122.925



65, 38.571, 252.925



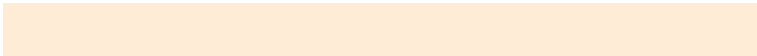
65, 38.571, 302.925

Sweetspot

The Sweet Spot groups the original color and five complimentary colors.



65, 38.571, 72.929



94, 13.306, 77.851



53, 47.811, 351.631



50, 9.021, 77.586



0, 0.000, 0.000



53, 0.007, 296.813

Same Dimension

The Same Dimension uses a secret algorithm to generate beautiful new colors.



65, 38.571, 72.929



79, 57.985, 71.262



77, 53.731, 106.771



41, 3.802, 78.702



45, 60.022, 64.616



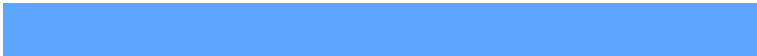
8, 13.030, 62.840

Inverse Universe

The Inverse Universe completely reimagines the original color for something new.



57, 34.528, 270.375



67, 50.972, 274.096



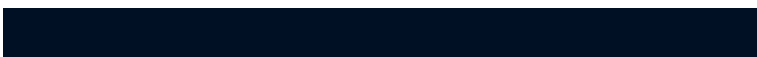
44, 62.426, 298.902



40, 3.743, 261.218



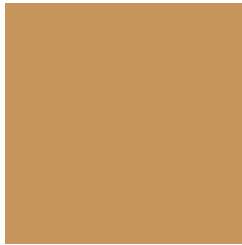
33, 55.738, 287.573



5, 14.716, 273.727

Previews

White Background



This preview shows how the CIELCh color 65, 38.571, 72.925 looks on a white background.

Color Contrast Check

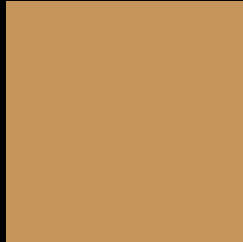
Large Text (above 18pt) WCAG AA × Fail

Any Text WCAG AA × Fail

Large Text (above 18pt) WCAG AAA × Fail

Any Text WCAG AAA × Fail

Black Background



This preview shows how the CIE LCh color 65, 38.571, 72.925 looks on a black background.

Color Contrast Check

Large Text (above 18pt) WCAG AA ✓ Pass

Any Text WCAG AA ✓ Pass

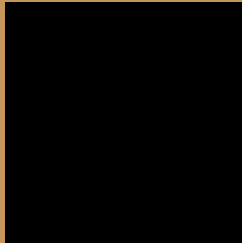
Large Text (above 18pt) WCAG AAA ✓ Pass

Any Text WCAG AAA ✓ Pass

If you want to check with other color combinations, try the [Color Contrast Checker](#).

CIELCh 65, 38.571, 72.925

Background



This preview shows how black text looks on a background with the CIELCh color 65, 38.571, 72.925.



This preview shows how white text looks on a background with the CIELCh color 65, 38.571, 72.925.

Color Blindness Simulation

Color vision deficiency is a very complex topic, and I could not describe the different causes any better than Wikipedia does, so if you want to learn more, you should check out their [article about color blindness](#).

Dichromacy



Original Color

65, 38.571, 72.925

Protanopia

65, 34.976, 95.625

Deuteranopia

65, 38.093, 77.830



Tritanopia
65, 24.989, 8.095

Trichromacy



Original Color
65, 38.571, 72.925

Protanomaly
65, 35.594, 86.951

Deuteranomaly
65, 38.401, 75.794

Tritanomaly
65, 25.001, 39.303

Monochromacy



Original Color
65, 38.571, 72.925

Achromatopsia
65, 0.008, 296.813

Achromatomaly
65, 13.600, 78.076

CSS Examples

Text

The CSS property to change the color of the text to CIELCh 65, 38.571, 72.925 is called "color". The color property can be set on classes, ids or directly on the HTML element.

This example shows how text in the color `rgb(197, 149, 92)` looks like.

```
.text, #text, p{  
    color:rgb(197, 149, 92)  
}
```

If you want to add a text shadow in that color use the text-shadow property, you can generate a text shadow directly with our [CSS Text Shadow Generator](#).

Here you see how black text with a 4 pixel rgb(197, 149, 92) colored shadow looks like.

```
.shadow{ text-shadow: 4px 4px 2px rgb(197, 149, 92) }
```

Border

The CSS property to change the border of an element to CIELCh 65, 38.571, 72.925 is called "border". The border property can be set on classes, ids or directly on the HTML element.

This example shows the color as border, it can be applied via the CSS property "border" or "border-color".

```
.border, #border, table{ border:4px solid rgb(197, 149, 92) }
```

If only the border color should be changed use the property `border-color`.

```
.border{ border-color:rgb(197, 149, 92) }
```

If you want to add a box shadow in that color use:

Here you see how a box with a 4 pixel `rgb(197, 149, 92)` colored shadow looks like.

```
.boxshadow{ -moz-box-shadow:4px 4px 4px  
4px rgb(197, 149, 92); -webkit-box-  
shadow:4px 4px 4px 4px rgb(197, 149, 92);  
box-shadow:4px 4px 4px 4px rgb(197, 149,  
92) }
```

Background

The CSS property to change the background color of an element to CIELCh 65, 38.571, 72.925 is called "background". The background property can be set on classes, ids or directly on the HTML element.

```
.background, #background, body{  
background: rgb(197, 149, 92) }
```

If only the background color should be changed can be used:

```
.background{ background-color: rgb(197,  
149, 92) }
```

This example shows the color as background, it is applied via the CSS property "background".

To optimize and compress your CSS code, you can use our [online CSS compressor and optimizer](#) based on csstidy. If you want to create a linear or radial gradient as background or border, check our [CSS Gradient Generator](#).

Hey! You found this booklet interesting? Support Converting Colors with the new Membership Option!

The pro membership hides all ads, plus gives you double the colors in the color bucket, and more awesome pro features!

[Learn more, Memberships starting at \\$2.50/m!](#)

**Follow me
on Twitter!**

@ConvertingColor