

Converting Colors

CIELCh(65, 48.166, 7.804)

Have a look what the booklet for
CIELCh(65, 48.166, 7.804) contains.

CIELCh(65, 48.123, 7.760)	3
<i>Conversions</i>	4
<i>Details</i>	6
<i>Harmonies</i>	11
<i>Previews</i>	20
<i>Color Blindness Simulation</i>	23
<i>CSS Examples</i>	26

Color

CIELCh(65, 48.123, 7.760)

Conversions

Conversions Part 1

Format	Color
Hex	EE7994
RGB	238, 121, 148
RGB Percent	93%, 47%, 58%
CMY	0.0661, 0.5250, 0.4191
CMYK	0.00, 0.49, 0.38, 0.07
HSL	346°, 78%, 70%
HSV	346°, 49%, 93%
XYZ	47.5127, 34.0472, 32.1341
YIQ	159.0610, 61.0650, 33.2010

Conversions

Conversions Part 2

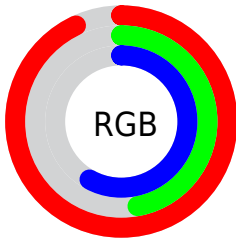
Format	Color
RYB	238, 121, 148
Decimal	15628692
CIELab	65.00, 47.68, 6.50
CIELCh	65, 48.123, 7.760
Yxy	34.0472, 0.4179, 0.2995
Android (android.graphics.Color)	4293818772 (0xFFEE7994)
YUV	159.0610, -5.4531, 69.2295
Hunter-Lab	58.3500, 43.2351, 8.1932

Details

The CIELCh color **65, 48.123, 7.760** is a light color, and the websafe version is hex **FF6699**. A complement of this color would be **87, 39.668, 175.840**, and the grayscale version is **66, 0.008, 296.813**.

A 20% lighter version of the original color is **80, 32.428, 357.424**, and **45, 48.102, 7.654** is the 20% darker color. If you saturate the color by 10%, you get **60, 57.895, 10.229**, and if you desaturate by 10%, it is **70, 37.976, 5.798**.

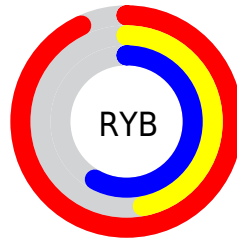
Distribution



Red (93%)

Green (47%)

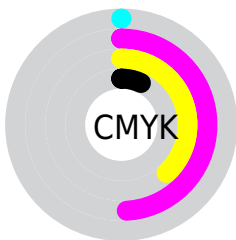
Blue (58%)



Red (93%)

Yellow (47%)

Blue (58%)

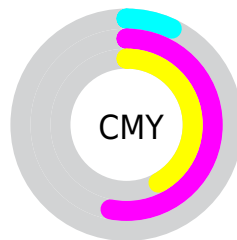


Cyan (0%)

Magenta (49%)

Yellow (38%)

Black (7%)



Cyan (7%)

Magenta (53%)

Yellow (42%)

Brightness & Saturation Gradients

These gradients show how the CIELCh color 65, 48.123, 7.760 changes by changing the brightness by 10 percent. The first figure shows a shift by +10% for each color and the second figure -10%.

Similar to the brightness gradients but the following saturation gradients show a change of the CIELCh color 65, 48.123, 7.760 by changing the saturation by 10% instead.

 65, 48.123, 7.760  65, 48.123, 7.760

 100, 48.123, 7.760  55, 48.123, 7.760

 85, 48.123, 7.760  45, 48.123, 7.760


 95, 48.123, 7.760  35, 48.123, 7.760

 25, 48.123, 7.760

 15, 48.123, 7.760

 5, 48.123, 7.760

 0, 48.123, 7.760

 65, 48.123, 7.760  65, 48.123, 7.760

 60, 57.895, 10.229  70, 37.976, 5.798

■ 56, 66.878, 13.359

■ 76, 27.817, 4.205

■ 53, 74.699, 17.306

■ 82, 17.890, 2.884

■ 51, 81.216, 22.138

■ 88, 8.339, 1.744

■ 50, 86.723, 27.591

■ 95, 0.765, 181.613

■ 50, 87.205, 28.045

■ 99, 5.794, 199.153

Harmonies

Complementary

The Complementary color scheme is a pair of colors which are on the opposite of each other on the color wheel.



65, 48.123, 7.760



87, 39.668, 175.840

Rectangle

The Rectangle color scheme consists of four colors that form a rectangle on the color wheel.



65, 48.123, 7.760



65, 48.123, 57.760



65, 48.123, 187.760



65, 48.123, 237.760

Sweetspot

The Sweet Spot groups the original color and five complimentary colors.



65, 48.120, 7.762



90, 14.684, 2.403



65, 69.662, 319.873



47, 10.068, 2.649



0, 0.000, 0.000



53, 0.007, 296.813

Same Dimension

The Same Dimension uses a secret algorithm to generate beautiful new colors.



65, 48.120, 7.762



64, 61.055, 10.252



71, 41.467, 45.878



47, 5.219, 1.782



38, 71.188, 27.034



8, 28.918, 14.111

Inverse Universe

The Inverse Universe completely reimagines the original color for something new.



65, 48.120, 7.762



64, 61.055, 10.252



79, 29.354, 232.885



47, 5.219, 1.782



38, 71.188, 27.034



8, 28.918, 14.111

Previews

White Background



This preview shows how the CIELCh color 65, 48.123, 7.760 looks on a white background.

Color Contrast Check

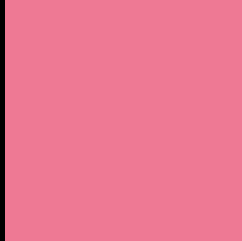
Large Text (above 18pt) WCAG AA × Fail

Any Text WCAG AA × Fail

Large Text (above 18pt) WCAG AAA × Fail

Any Text WCAG AAA × Fail

Black Background



This preview shows how the CIE LCh color 65, 48.123, 7.760 looks on a black background.

Color Contrast Check

Large Text (above 18pt) WCAG AA ✓ Pass

Any Text WCAG AA ✓ Pass

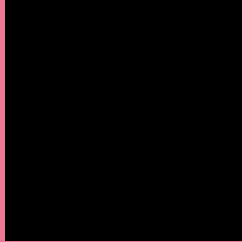
Large Text (above 18pt) WCAG AAA ✓ Pass

Any Text WCAG AAA ✓ Pass

If you want to check with other color combinations, try the [Color Contrast Checker](#).

CIELCh 65, 48.123, 7.760

Background



This preview shows how black text looks on a background with the CIELCh color 65, 48.123, 7.760.



This preview shows how white text looks on a background with the CIELCh color 65, 48.123, 7.760.

Color Blindness Simulation

Color vision deficiency is a very complex topic, and I could not describe the different causes any better than Wikipedia does, so if you want to learn more, you should check out their [article about color blindness](#).

Dichromacy



Original Color

65, 48.123, 7.760

Protanopia

65, 6.691, 294.066

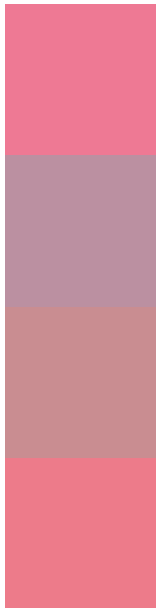
Deuteranopia

65, 11.909, 47.742



Tritanopia
65, 46.758, 18.894

Trichromacy



Original Color
65, 48.123, 7.760

Protanomaly
64, 19.126, 351.940

Deuteranomaly
65, 24.405, 16.773

Tritanomaly
65, 46.866, 15.069

Monochromacy



Original Color
65, 48.123, 7.760

Achromatopsia
65, 0.008, 296.813

Achromatomaly
64, 17.792, 3.169

CSS Examples

Text

The CSS property to change the color of the text to CIELCh 65, 48.123, 7.760 is called "color". The color property can be set on classes, ids or directly on the HTML element.

This example shows how text in the color `rgb(238, 121, 148)` looks like.

```
.text, #text, p{  
    color:rgb(238, 121, 148)  
}
```

If you want to add a text shadow in that color use the text-shadow property, you can generate a text shadow directly with our [CSS Text Shadow Generator](#).

Here you see how black text with a 4 pixel rgb(238, 121, 148) colored shadow looks like.

```
.shadow{ text-shadow: 4px 4px 2px rgb(238, 121, 148) }
```

Border

The CSS property to change the border of an element to CIELCh 65, 48.123, 7.760 is called "border". The border property can be set on classes, ids or directly on the HTML element.

This example shows the color as border, it can be applied via the CSS property "border" or "border-color".

```
.border, #border, table{ border:4px solid rgb(238, 121, 148) }
```

If only the border color should be changed use the property `border-color`.

```
.border{ border-color:rgb(238, 121, 148) }
```

If you want to add a box shadow in that color use:

Here you see how a box with a 4 pixel `rgb(238, 121, 148)` colored shadow looks like.

```
.boxshadow{ -moz-box-shadow:4px 4px 4px  
4px rgb(238, 121, 148); -webkit-box-  
shadow:4px 4px 4px 4px rgb(238, 121, 148);  
box-shadow:4px 4px 4px 4px rgb(238, 121,  
148) }
```

Background

The CSS property to change the background color of an element to CIELCh 65, 48.123, 7.760 is called "background". The background property can be set on classes, ids or directly on the HTML element.

```
.background, #background, body{  
background: rgb(238, 121, 148) }
```

If only the background color should be changed can be used:

```
.background{ background-color: rgb(238,  
121, 148) }
```

This example shows the color as background, it is applied via the CSS property "background".

To optimize and compress your CSS code, you can use our [online CSS compressor and optimizer](#) based on csstidy. If you want to create a linear or radial gradient as background or border, check our [CSS Gradient Generator](#).

Hey! You found this booklet interesting? Support Converting Colors with the new Membership Option!

The pro membership hides all ads, plus gives you double the colors in the color bucket, and more awesome pro features!

[Learn more, Memberships starting at \\$2.50/m!](#)

**Follow me
on Twitter!**

@ConvertingColor