

Converting Colors

CIELCh(65, 53.033, 1.169)

Have a look what the booklet for
CIELCh(65, 53.033, 1.169) contains.

CIELCh(65, 52.933, 0.993)	3
<i>Conversions</i>	4
<i>Details</i>	6
<i>Harmonies</i>	11
<i>Previews</i>	20
<i>Color Blindness Simulation</i>	23
<i>CSS Examples</i>	26

Color

CIELCh(65, 52.933, 0.993)

Conversions

Conversions Part 1

Format	Color
Hex	F3749E
RGB	243, 116, 158
RGB Percent	95%, 45%, 62%
CMY	0.0467, 0.5448, 0.3801
CMYK	0.00, 0.52, 0.35, 0.05
HSL	340°, 84%, 70%
HSV	340°, 52%, 95%
XYZ	49.4209, 34.0472, 36.3458
YIQ	158.7610, 62.2100, 39.9860

Conversions

Conversions Part 2

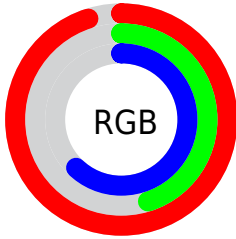
Format	Color
R _Y B	243, 116, 158
Decimal	15955102
CIE Lab	65.00, 52.93, 0.92
CIE LCh	65, 52.933, 0.993
Yxy	34.0472, 0.4125, 0.2842
Android (android.graphics.Color)	4294145182 (0xFFFF3749E)
YUV	158.7610, -0.3752, 73.8776
Hunter-Lab	58.3500, 49.0724, 3.9136

Details

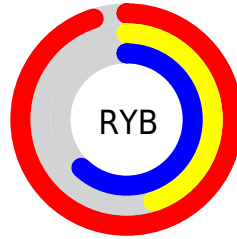
The CIELCh color **65, 52.933, 0.993** is a light color, and the websafe version is hex **FF6699**. A complement of this color would be **88, 46.127, 168.043**, and the grayscale version is **65, 0.008, 296.813**.

A 20% lighter version of the original color is **79, 37.382, 347.508**, and **45, 52.903, 0.742** is the 20% darker color. If you saturate the color by 10%, you get **60, 62.172, 3.398**, and if you desaturate by 10%, it is **70, 42.900, 359.067**.

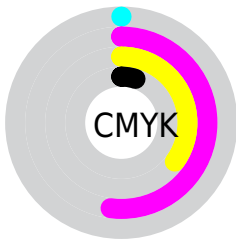
Distribution



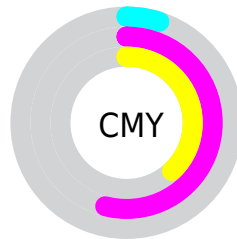
- Red (95%)
- Green (45%)
- Blue (62%)



- Red (95%)
- Yellow (45%)
- Blue (62%)



- Cyan (0%)
- Magenta (52%)
- Yellow (35%)
- Black (5%)




- Cyan (5%)
- Magenta (54%)
- Yellow (38%)

Brightness & Saturation Gradients

These gradients show how the CIELCh color 65, 52.933, 0.993 changes by changing the brightness by 10 percent. The first figure shows a shift by +10% for each color and the second figure -10%.

Similar to the brightness gradients but the following saturation gradients show a change of the CIELCh color 65, 52.933, 0.993 by changing the saturation by 10% instead.

 65, 52.933, 0.993  65, 52.933, 0.993

 100, 52.933, 0.993  55, 52.933, 0.993

 85, 52.933, 0.993  45, 52.933, 0.993

 95, 52.933, 0.993  35, 52.933, 0.993

 25, 52.933, 0.993

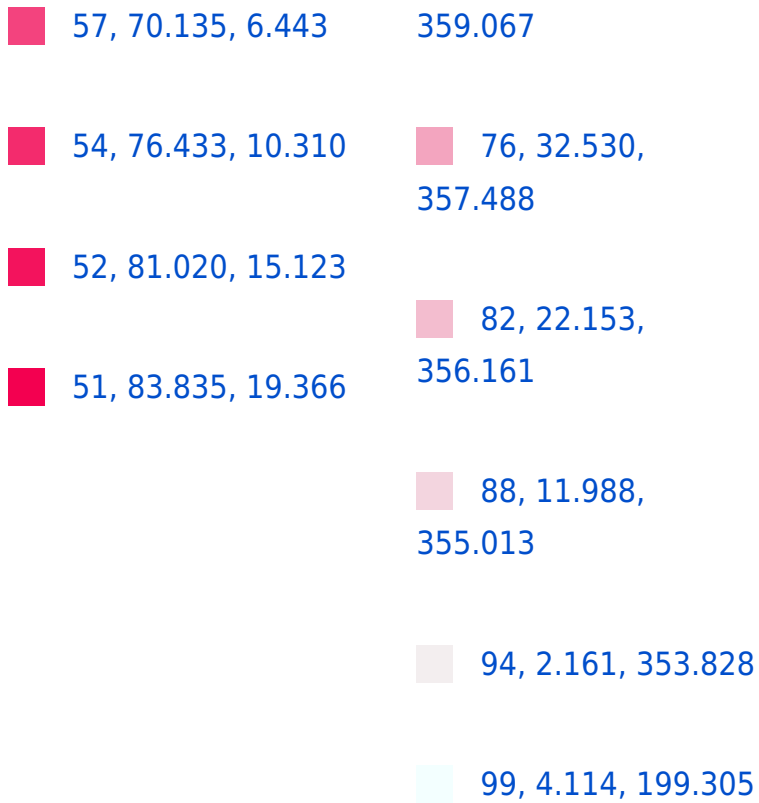
 15, 52.933, 0.993

 5, 52.933, 0.993

 0, 52.933, 0.993

 65, 52.933, 0.993  65, 52.933, 0.993

 60, 62.172, 3.398  70, 42.900,



Harmonies

Complementary

The Complementary color scheme is a pair of colors which are on the opposite of each other on the color wheel.



65, 52.933, 0.993



88, 46.127, 168.043

Rectangle

The Rectangle color scheme consists of four colors that form a rectangle on the color wheel.



65, 52.933, 0.993



65, 52.933, 50.993



65, 52.933, 180.993



65, 52.933, 230.993

Sweetspot

The Sweet Spot groups the original color and five complimentary colors.



65, 52.930, 0.995



89, 16.394, 355.433



63, 74.203, 316.867



46, 11.108, 355.668



0, 0.000, 0.000



53, 0.007, 296.813

Same Dimension

The Same Dimension uses a secret algorithm to generate beautiful new colors.



65, 52.930, 0.995



63, 65.285, 3.647



68, 47.971, 37.262



48, 5.566, 354.717



39, 68.307, 18.329



9, 29.628, 9.186

Inverse Universe

The Inverse Universe completely reimagines the original color for something new.



65, 52.930, 0.995



63, 65.285, 3.647



83, 31.824, 218.328



48, 5.566, 354.717



39, 68.307, 18.329



9, 29.628, 9.186

Previews

White Background



This preview shows how the CIELCh color 65, 52.933, 0.993 looks on a white background.

Color Contrast Check

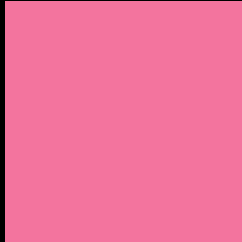
Large Text (above 18pt) WCAG AA × Fail

Any Text WCAG AA × Fail

Large Text (above 18pt) WCAG AAA × Fail

Any Text WCAG AAA × Fail

Black Background



This preview shows how the CIELCh color 65, 52.933, 0.993 looks on a black background.

Color Contrast Check

Large Text (above 18pt) WCAG AA ✓ Pass

Any Text WCAG AA ✓ Pass

Large Text (above 18pt) WCAG AAA ✓ Pass

Any Text WCAG AAA ✓ Pass

If you want to check with other color combinations, try the [Color Contrast Checker](#).

CIELCh 65, 52.933, 0.993

Background



This preview shows how black text looks on a background with the CIELCh color 65, 52.933, 0.993.



This preview shows how white text looks on a background with the CIELCh color 65, 52.933, 0.993.

Color Blindness Simulation

Color vision deficiency is a very complex topic, and I could not describe the different causes any better than Wikipedia does, so if you want to learn more, you should check out their [article about color blindness](#).

Dichromacy



Original Color
65, 52.933, 0.993

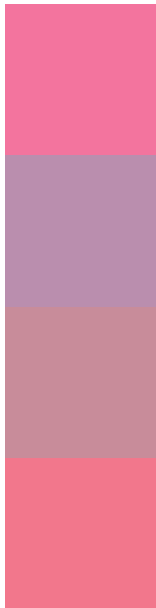
Protanopia
65, 14.469, 287.475

Deuteranopia
65, 9.091, 23.676



Tritanopia
65, 49.770, 19.713

Trichromacy



Original Color
65, 52.933, 0.993

Protanomaly
64, 24.266, 334.810

Deuteranomaly
64, 24.902, 4.088

Tritanomaly
65, 50.412, 12.720

Monochromacy



Original Color
65, 52.933, 0.993

Achromatopsia
65, 0.008, 296.813

Achromatomaly
64, 20.320, 355.759

CSS Examples

Text

The CSS property to change the color of the text to CIELCh 65, 52.933, 0.993 is called "color". The color property can be set on classes, ids or directly on the HTML element.

This example shows how text in the color `rgb(243, 116, 158)` looks like.

```
.text, #text, p{  
    color:rgb(243, 116, 158)  
}
```

If you want to add a text shadow in that color use the text-shadow property, you can generate a text shadow directly with our [CSS Text Shadow Generator](#).

Here you see how black text with a 4 pixel rgb(243, 116, 158) colored shadow looks like.

```
.shadow{ text-shadow: 4px 4px 2px rgb(243, 116, 158) }
```

Border

The CSS property to change the border of an element to CIELCh 65, 52.933, 0.993 is called "border". The border property can be set on classes, ids or directly on the HTML element.

This example shows the color as border, it can be applied via the CSS property "border" or "border-color".

```
.border, #border, table{ border:4px solid rgb(243, 116, 158) }
```

If only the border color should be changed use the property `border-color`.

```
.border{ border-color:rgb(243, 116, 158) }
```

If you want to add a box shadow in that color use:

Here you see how a box with a 4 pixel `rgb(243, 116, 158)` colored shadow looks like.

```
.boxshadow{ -moz-box-shadow:4px 4px 4px  
4px rgb(243, 116, 158); -webkit-box-  
shadow:4px 4px 4px 4px rgb(243, 116, 158);  
box-shadow:4px 4px 4px 4px rgb(243, 116,  
158) }
```

Background

The CSS property to change the background color of an element to CIELCh 65, 52.933, 0.993 is called "background". The background property can be set on classes, ids or directly on the HTML element.

```
.background, #background, body{  
background: rgb(243, 116, 158) }
```

If only the background color should be changed can be used:

```
.background{ background-color: rgb(243,  
116, 158) }
```

This example shows the color as background, it is applied via the CSS property "background".

To optimize and compress your CSS code, you can use our [online CSS compressor and optimizer](#) based on csstidy. If you want to create a linear or radial gradient as background or border, check our [CSS Gradient Generator](#).

Hey! You found this booklet interesting? Support Converting Colors with the new Membership Option!

The pro membership hides all ads, plus gives you double the colors in the color bucket, and more awesome pro features!

[Learn more, Memberships starting at \\$2.50/m!](#)

**Follow me
on Twitter!**

@ConvertingColor