

Converting Colors

CIELCh(65, 59.627, 9.525)

Have a look what the booklet for
CIELCh(65, 59.627, 9.525) contains.

CIELCh(65, 59.702, 9.310)	3
<i>Conversions</i>	4
<i>Details</i>	6
<i>Harmonies</i>	11
<i>Previews</i>	20
<i>Color Blindness Simulation</i>	23
<i>CSS Examples</i>	26

Color

CIELCh(65, 59.702, 9.310)

Conversions

Conversions Part 1

Format	Color
Hex	FF6C8F
RGB	255, 108, 143
RGB Percent	100%, 42%, 56%
CMY	0.0000, 0.5757, 0.4386
CMYK	0.00, 0.58, 0.44, 0.00
HSL	346°, 100%, 71%
HSV	346°, 58%, 100%
XYZ	51.6630, 34.0472, 29.8998
YIQ	155.9430, 76.3770, 42.0490

Conversions

Conversions Part 2

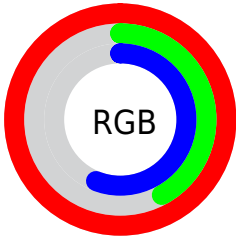
Format	Color
RYB	255, 108, 143
Decimal	16739471
CIELab	65.00, 58.92, 9.66
CIElCh	65, 59.702, 9.310
Yxy	34.0472, 0.4469, 0.2945
Android (android.graphics.Color)	4294929551 (0xFFFF6C8F)
YUV	155.9430, -6.3809, 86.8730
Hunter-Lab	58.3500, 55.9314, 10.4635

Details

The CIELCh color **65, 59.702, 9.310** is a light color, and the websafe version is hex **FF6699**. A complement of this color would be **92, 47.823, 174.098**, and the grayscale version is **64, 0.008, 296.813**.

A 20% lighter version of the original color is **77, 38.032, 355.812**, and **45, 59.783, 9.384** is the 20% darker color. If you saturate the color by 10%, you get **61, 69.198, 12.305**, and if you desaturate by 10%, it is **70, 49.256, 6.892**.

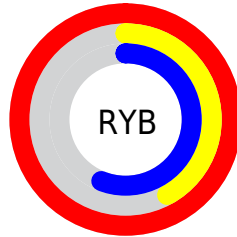
Distribution



Red (100%)

Green (42%)

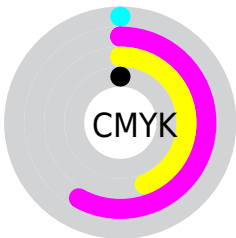
Blue (56%)



Red (100%)

Yellow (42%)

Blue (56%)

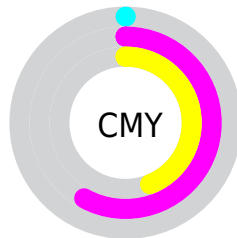


Cyan (0%)

Magenta (58%)

Yellow (44%)

Black (0%)



Cyan (0%)

Magenta (58%)

Yellow (44%)

Brightness & Saturation Gradients

These gradients show how the CIELCh color 65, 59.702, 9.310 changes by changing the brightness by 10 percent. The first figure shows a shift by +10% for each color and the second figure -10%.

Similar to the brightness gradients but the following saturation gradients show a change of the CIELCh color 65, 59.702, 9.310 by changing the saturation by 10% instead.

 65, 59.702, 9.310  65, 59.702, 9.310

 100, 59.702, 9.310  55, 59.702, 9.310

 85, 59.702, 9.310  45, 59.702, 9.310

 95, 59.702, 9.310  35, 59.702, 9.310

 25, 59.702, 9.310

 15, 59.702, 9.310

 5, 59.702, 9.310

 0, 59.702, 9.310

 65, 59.702, 9.310  65, 59.702, 9.310

 61, 69.198, 12.305  70, 49.256, 6.892

■ 57, 77.546, 16.136

■ 76, 38.528, 4.988

■ 55, 84.479, 20.866

■ 82, 27.812, 3.438

■ 54, 90.200, 26.348

■ 88, 17.356, 2.146

■ 54, 91.559, 27.663

■ 95, 7.306, 1.017

100, 0.012,
296.813

Harmonies

Complementary

The Complementary color scheme is a pair of colors which are on the opposite of each other on the color wheel.



65, 59.702, 9.310



92, 47.823, 174.098

Rectangle

The Rectangle color scheme consists of four colors that form a rectangle on the color wheel.



65, 59.702, 9.310



65, 59.702, 59.310



65, 59.702, 189.310



65, 59.702, 239.310

Sweetspot

The Sweet Spot groups the original color and five complimentary colors.



65, 59.629, 9.279



89, 16.766, 2.078



64, 85.053, 319.608



46, 11.266, 2.319



0, 0.000, 0.000



53, 0.007, 296.813

Same Dimension

The Same Dimension uses a secret algorithm to generate beautiful new colors.



65, 59.629, 9.279



60, 70.470, 12.798



71, 53.516, 44.498



50, 5.509, 1.230



40, 73.141, 26.595



10, 31.764, 16.678

Inverse Universe

The Inverse Universe completely reimagines the original color for something new.



65, 59.629, 9.279



60, 70.470, 12.798



82, 34.774, 232.086



50, 5.509, 1.230



40, 73.141, 26.595



10, 31.764, 16.678

Previews

White Background



This preview shows how the CIELCh color 65, 59.702, 9.310 looks on a white background.

Color Contrast Check

Large Text (above 18pt) WCAG AA × Fail

Any Text WCAG AA × Fail

Large Text (above 18pt) WCAG AAA × Fail

Any Text WCAG AAA × Fail

Black Background



This preview shows how the CIELCh color 65, 59.702, 9.310 looks on a black background.

Color Contrast Check

Large Text (above 18pt) WCAG AA ✓ Pass

Any Text WCAG AA ✓ Pass

Large Text (above 18pt) WCAG AAA ✓ Pass

Any Text WCAG AAA ✓ Pass

If you want to check with other color combinations, try the [Color Contrast Checker](#).

CIELCh 65, 59.702, 9.310

Background



This preview shows how black text looks on a background with the CIELCh color 65, 59.702, 9.310.

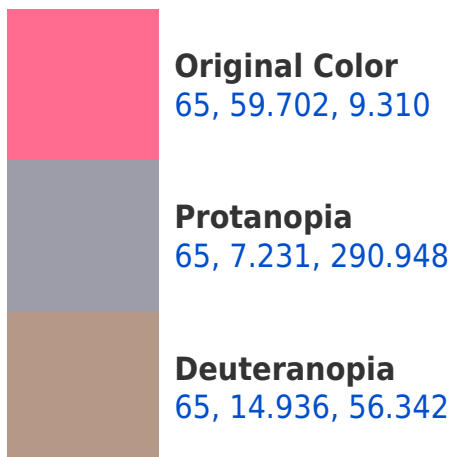


This preview shows how white text looks on a background with the CIELCh color 65, 59.702, 9.310.

Color Blindness Simulation

Color vision deficiency is a very complex topic, and I could not describe the different causes any better than Wikipedia does, so if you want to learn more, you should check out their [article about color blindness](#).

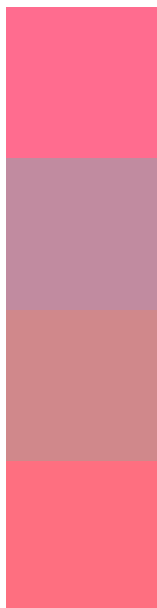
Dichromacy





Tritanopia
65, 58.908, 22.525

Trichromacy



Original Color
65, 59.702, 9.310

Protanomaly
64, 23.924, 352.956

Deuteranomaly
64, 29.619, 19.365

Tritanomaly
65, 58.774, 18.072

Monochromacy



Original Color
65, 59.702, 9.310

Achromatopsia
64, 0.008, 296.813

Achromatomaly
63, 22.019, 4.253

CSS Examples

Text

The CSS property to change the color of the text to CIELCh 65, 59.702, 9.310 is called "color". The color property can be set on classes, ids or directly on the HTML element.

This example shows how text in the color `rgb(255, 108, 143)` looks like.

```
.text, #text, p{  
    color:rgb(255, 108, 143)  
}
```

If you want to add a text shadow in that color use the text-shadow property, you can generate a text shadow directly with our [CSS Text Shadow Generator](#).

Here you see how black text with a 4 pixel rgb(255, 108, 143) colored shadow looks like.

```
.shadow{ text-shadow: 4px 4px 2px rgb(255, 108, 143) }
```

Border

The CSS property to change the border of an element to CIELCh 65, 59.702, 9.310 is called "border". The border property can be set on classes, ids or directly on the HTML element.

This example shows the color as border, it can be applied via the CSS property "border" or "border-color".

```
.border, #border, table{ border:4px solid rgb(255, 108, 143) }
```

If only the border color should be changed use the property border-color.

```
.border{ border-color:rgb(255, 108, 143) }
```

If you want to add a box shadow in that color use:

Here you see how a box with a 4 pixel rgb(255, 108, 143) colored shadow looks like.

```
.boxshadow{ -moz-box-shadow:4px 4px 4px  
4px rgb(255, 108, 143); -webkit-box-  
shadow:4px 4px 4px 4px rgb(255, 108, 143);  
box-shadow:4px 4px 4px 4px rgb(255, 108,  
143) }
```

Background

The CSS property to change the background color of an element to CIELCh 65, 59.702, 9.310 is called "background". The background property can be set on classes, ids or directly on the HTML element.

```
.background, #background, body{  
background: rgb(255, 108, 143) }
```

If only the background color should be changed can be used:

```
.background{ background-color: rgb(255,  
108, 143) }
```

This example shows the color as background, it is applied via the CSS property "background".

To optimize and compress your CSS code, you can use our [online CSS compressor and optimizer](#) based on csstidy. If you want to create a linear or radial gradient as background or border, check our [CSS Gradient Generator](#).

Hey! You found this booklet interesting? Support Converting Colors with the new Membership Option!

The pro membership hides all ads, plus gives you double the colors in the color bucket, and more awesome pro features!

[Learn more, Memberships starting at \\$2.50/m!](#)

**Follow me
on Twitter!**

@ConvertingColor