

Converting Colors

CIELCh(66, 12.819, 54.691)

Have a look what the booklet for
CIELCh(66, 12.819, 54.691) contains.

CIELCh(66, 12.806, 54.036)	3
<i>Conversions</i>	4
<i>Details</i>	6
<i>Harmonies</i>	11
<i>Previews</i>	20
<i>Color Blindness Simulation</i>	23
<i>CSS Examples</i>	26

Color

CIELCh(66, 12.806, 54.036)

Conversions

Conversions Part 1

Format	Color
Hex	B59B8E
RGB	181, 155, 142
RGB Percent	71%, 61%, 56%
CMY	0.2893, 0.3913, 0.4423
CMYK	0.00, 0.14, 0.22, 0.29
HSL	20°, 21%, 63%
HSV	20°, 22%, 71%
XYZ	35.7633, 35.3238, 30.6074
YIQ	161.2920, 19.6690, 1.4690

Conversions

Conversions Part 2

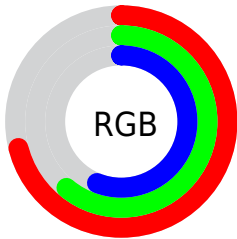
Format	Color
RYB	181, 162, 142
Decimal	11901838
CIELab	66.00, 7.52, 10.36
CIELCh	66, 12.806, 54.036
Yxy	35.3238, 0.3517, 0.3474
Android (android.graphics.Color)	4290091918 (0xFFB59B8E)
YUV	161.2920, -9.5110, 17.2839
Hunter-Lab	59.4338, 3.4002, 11.0704

Details

The CIELCh color **66, 12.806, 54.036** is a light color, and the websafe version is hex **CC9999**. A complement of this color would be **67, 11.425, 237.921**, and the grayscale version is **66, 0.008, 296.813**.

A 20% lighter version of the original color is **86, 12.638, 52.408**, and **46, 12.863, 53.648** is the 20% darker color. If you saturate the color by 10%, you get **63, 19.455, 53.385**, and if you desaturate by 10%, it is **70, 6.615, 54.746**.

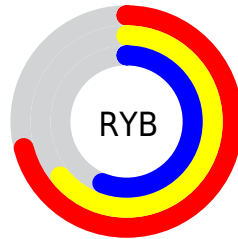
Distribution



Red (71%)

Green (61%)

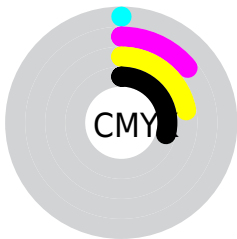
Blue (56%)



Red (71%)

Yellow (64%)

Blue (56%)

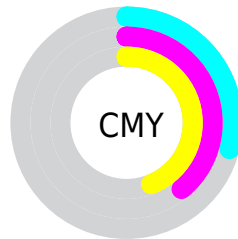


Cyan (0%)

Magenta (14%)

Yellow (22%)

Black (29%)



Cyan (29%)

Magenta (39%)

Yellow (44%)

Brightness & Saturation Gradients

These gradients show how the CIELCh color 66, 12.806, 54.036 changes by changing the brightness by 10 percent. The first figure shows a shift by +10% for each color and the second figure -10%.

Similar to the brightness gradients but the following saturation gradients show a change of the CIELCh color 66, 12.806, 54.036 by changing the saturation by 10% instead.

■ 66, 12.806, 54.036

■ 66, 12.806, 54.036

■ 100, 12.806,
54.036

■ 56, 12.806, 54.036

■ 86, 12.806, 54.036

■ 46, 12.806, 54.036

■ 96, 12.806, 54.036

■ 36, 12.806, 54.036

■ 26, 12.806, 54.036

■ 16, 12.806, 54.036

■ 6, 12.806, 54.036

■ 0, 12.806, 54.036

■ 66, 12.806, 54.036

■ 66, 12.806, 54.036

■ 63, 19.455, 53.385

■ 70, 6.615, 54.746

59, 26.590, 52.795

73, 0.843, 55.052

56, 34.216, 52.292

77, 4.554, 236.489

53, 42.286, 51.874

81, 9.618, 237.249

50, 50.653, 51.501

84, 14.388,
238.047

47, 58.959, 51.040

88, 18.901,
238.847

45, 66.435, 50.176

91, 20.046,
221.650

43, 71.809, 49.182

95, 22.629,
202.153

95, 23.641,
197.960

Harmonies

Complementary

The Complementary color scheme is a pair of colors which are on the opposite of each other on the color wheel.



66, 12.806, 54.036



67, 11.425, 237.921

Rectangle

The Rectangle color scheme consists of four colors that form a rectangle on the color wheel.



66, 12.806, 54.036



66, 12.806, 104.036



66, 12.806, 234.036



66, 12.806, 284.036

Sweetspot

The Sweet Spot groups the original color and five complimentary colors.



66, 12.806, 54.047



90, 4.166, 55.099



63, 20.715, 337.213



48, 2.767, 55.063



96, 0.011, 296.813



49, 0.007, 296.813

Same Dimension

The Same Dimension uses a secret algorithm to generate beautiful new colors.



66, 12.806, 54.047



81, 19.423, 53.715



71, 17.805, 99.943



37, 3.261, 54.896



37, 63.875, 49.611



4, 8.839, 44.656

Inverse Universe

The Inverse Universe completely reimagines the original color for something new.



67, 11.425, 237.921



84, 16.827, 238.572



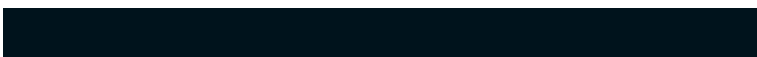
62, 18.330, 285.071



37, 3.116, 236.615



42, 35.546, 261.337



5, 8.853, 249.711

Previews

White Background



This preview shows how the CIELCh color 66, 12.806, 54.036 looks on a white background.

Color Contrast Check

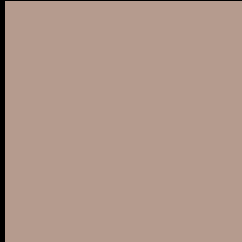
Large Text (above 18pt) WCAG AA × Fail

Any Text WCAG AA × Fail

Large Text (above 18pt) WCAG AAA × Fail

Any Text WCAG AAA × Fail

Black Background



This preview shows how the CIELCh color 66, 12.806, 54.036 looks on a black background.

Color Contrast Check

Large Text (above 18pt) WCAG AA ✓ Pass

Any Text WCAG AA ✓ Pass

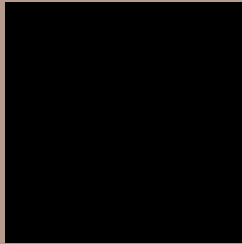
Large Text (above 18pt) WCAG AAA ✓ Pass

Any Text WCAG AAA ✓ Pass

If you want to check with other color combinations, try the [Color Contrast Checker](#).

CIELCh 66, 12.806, 54.036

Background



This preview shows how black text looks on a background with the CIELCh color 66, 12.806, 54.036.



This preview shows how white text looks on a background with the CIELCh color 66, 12.806, 54.036.

Color Blindness Simulation

Color vision deficiency is a very complex topic, and I could not describe the different causes any better than Wikipedia does, so if you want to learn more, you should check out their [article about color blindness](#).

Dichromacy



Original Color


66, 12.806, 54.036

Protanopia

66, 8.720, 90.691

Deuteranopia

66, 13.505, 52.110



Tritanopia
66, 14.015, 352.617

Trichromacy



Original Color
66, 12.806, 54.036

Protanomaly
66, 9.553, 73.422

Deuteranomaly
66, 13.154, 53.047

Tritanomaly
66, 11.903, 12.557

Monochromacy



Original Color
66, 12.806, 54.036

Achromatopsia
67, 0.008, 296.813

Achromatomaly
66, 4.444, 57.841

CSS Examples

Text

The CSS property to change the color of the text to CIELCh 66, 12.806, 54.036 is called "color". The color property can be set on classes, ids or directly on the HTML element.

This example shows how text in the color `rgb(181, 155, 142)` looks like.

```
.text, #text, p{  
    color:rgb(181, 155, 142)  
}
```

If you want to add a text shadow in that color use the text-shadow property, you can generate a text shadow directly with our [CSS Text Shadow Generator](#).

Here you see how black text with a 4 pixel rgb(181, 155, 142) colored shadow looks like.

```
.shadow{ text-shadow: 4px 4px 2px rgb(181, 155, 142) }
```

Border

The CSS property to change the border of an element to CIELCh 66, 12.806, 54.036 is called "border". The border property can be set on classes, ids or directly on the HTML element.

This example shows the color as border, it can be applied via the CSS property "border" or "border-color".

```
.border, #border, table{ border:4px solid rgb(181, 155, 142) }
```

If only the border color should be changed use the property `border-color`.

```
.border{ border-color:rgb(181, 155, 142) }
```

If you want to add a box shadow in that color use:

Here you see how a box with a 4 pixel `rgb(181, 155, 142)` colored shadow looks like.

```
.boxshadow{ -moz-box-shadow:4px 4px 4px  
4px rgb(181, 155, 142); -webkit-box-  
shadow:4px 4px 4px 4px rgb(181, 155, 142);  
box-shadow:4px 4px 4px 4px rgb(181, 155,  
142) }
```

Background

The CSS property to change the background color of an element to CIELCh 66, 12.806, 54.036 is called "background". The background property can be set on classes, ids or directly on the HTML element.

```
.background, #background, body{  
background: rgb(181, 155, 142) }
```

If only the background color should be changed can be used:

```
.background{ background-color: rgb(181,  
155, 142) }
```

This example shows the color as background, it is applied via the CSS property "background".

To optimize and compress your CSS code, you can use our [online CSS compressor and optimizer](#) based on csstidy. If you want to create a linear or radial gradient as background or border, check our [CSS Gradient Generator](#).

Hey! You found this booklet interesting? Support Converting Colors with the new Membership Option!

The pro membership hides all ads, plus gives you double the colors in the color bucket, and more awesome pro features!

[Learn more, Memberships starting at \\$2.50/m!](#)

**Follow me
on Twitter!**

@ConvertingColor