

Converting Colors

CIELCh(66, 12.891, 73.638)

Have a look what the booklet for
CIELCh(66, 12.891, 73.638) contains.

CIELCh(66, 13.072, 72.773)	3
<i>Conversions</i>	4
<i>Details</i>	6
<i>Harmonies</i>	11
<i>Previews</i>	20
<i>Color Blindness Simulation</i>	23
<i>CSS Examples</i>	26

Color

CIELCh(66, 13.072, 72.773)

Conversions

Conversions Part 1

Format	Color
Hex	B09D8A
RGB	176, 157, 138
RGB Percent	69%, 62%, 54%
CMY	0.3086, 0.3831, 0.4577
CMYK	0.00, 0.11, 0.22, 0.31
HSL	30°, 19%, 62%
HSV	30°, 22%, 69%
XYZ	34.6896, 35.3238, 29.1451
YIQ	160.5150, 17.4230, -1.8810

Conversions

Conversions Part 2

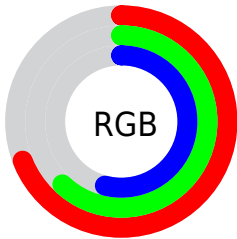
Format	Color
RYB	176, 176, 138
Decimal	11574666
CIELab	66.00, 3.87, 12.49
CIElCh	66, 13.072, 72.773
Yxy	35.3238, 0.3498, 0.3562
Android (android.graphics.Color)	4289764746 (0xFFB09D8A)
YUV	160.5150, -11.0999, 13.5803
Hunter-Lab	59.4338, 0.1754, 12.5291

Details

The CIELCh color **66, 13.072, 72.773** is a light color, and the websafe version is hex **999999**. A complement of this color would be **64, 12.354, 258.526**, and the grayscale version is **66, 0.008, 296.813**.

A 20% lighter version of the original color is **86, 13.380, 74.497**, and **46, 13.133, 73.519** is the 20% darker color. If you saturate the color by 10%, you get **63, 19.590, 71.550**, and if you desaturate by 10%, it is **69, 6.848, 73.987**.

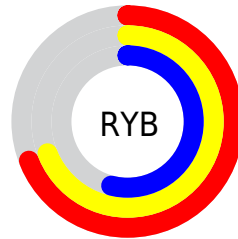
Distribution



Red (69%)

Green (62%)

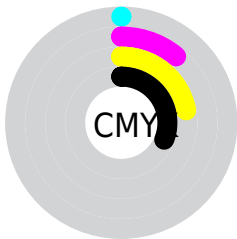
Blue (54%)



Red (69%)

Yellow (69%)

Blue (54%)

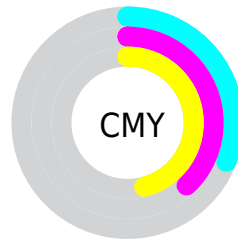


Cyan (0%)

Magenta (11%)

Yellow (22%)

Black (31%)



Cyan (31%)

Magenta (38%)

Yellow (46%)

Brightness & Saturation Gradients

These gradients show how the CIELCh color 66, 13.072, 72.773 changes by changing the brightness by 10 percent. The first figure shows a shift by +10% for each color and the second figure -10%.

Similar to the brightness gradients but the following saturation gradients show a change of the CIELCh color 66, 13.072, 72.773 by changing the saturation by 10% instead.

■ 66, 13.072, 72.773

■ 66, 13.072, 72.773

■ 100, 13.072,
72.773

■ 56, 13.072, 72.773

■ 86, 13.072, 72.773

■ 46, 13.072, 72.773

■ 96, 13.072, 72.773

■ 36, 13.072, 72.773

■ 26, 13.072, 72.773

■ 16, 13.072, 72.773

■ 6, 13.072, 72.773

■ 0, 13.072, 72.773

■ 66, 13.072, 72.773

■ 66, 13.072, 72.773

■ 63, 19.590, 71.550

■ 69, 6.848, 73.987

61, 26.405, 70.303

72, 0.899, 74.869

58, 33.493, 69.041

74, 4.799, 256.489

56, 40.771, 67.748

77, 10.271,
257.594

53, 48.045, 66.371

80, 15.541,
258.687

51, 54.916, 64.787

49, 60.675, 62.750

83, 20.634,
259.743

47, 64.583, 60.736

86, 22.768,
255.456

88, 21.181,
240.978

90, 21.040,
225.479

Harmonies

Complementary

The Complementary color scheme is a pair of colors which are on the opposite of each other on the color wheel.



66, 13.072, 72.773



64, 12.354, 258.526

Rectangle

The Rectangle color scheme consists of four colors that form a rectangle on the color wheel.



66, 13.072, 72.773



66, 13.072, 122.773



66, 13.072, 252.773



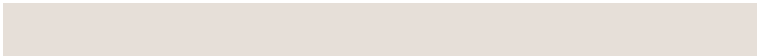
66, 13.072, 302.773

Sweetspot

The Sweet Spot groups the original color and five complimentary colors.



66, 13.072, 72.783



89, 4.347, 74.603



62, 18.152, 345.523



47, 2.885, 74.536



96, 0.011, 296.813



48, 0.006, 296.813

Same Dimension

The Same Dimension uses a secret algorithm to generate beautiful new colors.



66, 13.072, 72.783



82, 19.758, 72.182



71, 20.547, 108.120



36, 3.371, 74.246



41, 58.046, 61.195



4, 7.581, 63.011

Inverse Universe

The Inverse Universe completely reimagines the original color for something new.



64, 12.354, 258.526



79, 18.404, 259.389



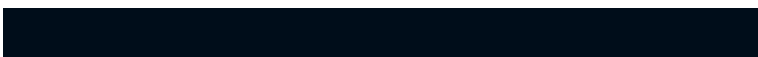
59, 21.589, 292.608



36, 3.300, 256.682



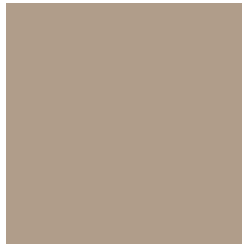
33, 48.620, 283.357



3, 8.802, 266.088

Previews

White Background



This preview shows how the CIELCh color 66, 13.072, 72.773 looks on a white background.

Color Contrast Check

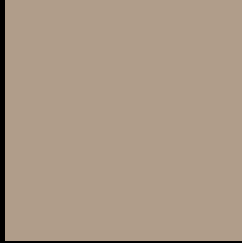
Large Text (above 18pt) WCAG AA × Fail

Any Text WCAG AA × Fail

Large Text (above 18pt) WCAG AAA × Fail

Any Text WCAG AAA × Fail

Black Background



This preview shows how the CIELCh color 66, 13.072, 72.773 looks on a black background.

Color Contrast Check

Large Text (above 18pt) WCAG AA ✓ Pass

Any Text WCAG AA ✓ Pass

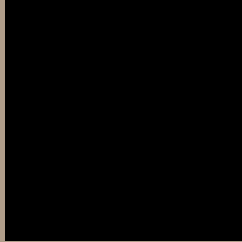
Large Text (above 18pt) WCAG AAA ✓ Pass

Any Text WCAG AAA ✓ Pass

If you want to check with other color combinations, try the [Color Contrast Checker](#).

CIELCh 66, 13.072, 72.773

Background



This preview shows how black text looks on a background with the CIELCh color 66, 13.072, 72.773.



This preview shows how white text looks on a background with the CIELCh color 66, 13.072, 72.773.

Color Blindness Simulation

Color vision deficiency is a very complex topic, and I could not describe the different causes any better than Wikipedia does, so if you want to learn more, you should check out their [article about color blindness](#).

Dichromacy



Original Color

66, 13.072, 72.773

Protanopia

66, 11.483, 92.729

Deuteranopia

66, 14.890, 53.836



Tritanopia
66, 12.323, 348.068

Trichromacy



Original Color
66, 13.072, 72.773

Protanomaly
66, 12.058, 85.273

Deuteranomaly
66, 13.876, 59.382

Tritanomaly
66, 9.429, 20.237

Monochromacy



Original Color
66, 13.072, 72.773

Achromatopsia
66, 0.008, 296.813

Achromatomaly
66, 4.715, 74.351

CSS Examples

Text

The CSS property to change the color of the text to CIELCh 66, 13.072, 72.773 is called "color". The color property can be set on classes, ids or directly on the HTML element.

This example shows how text in the color `rgb(176, 157, 138)` looks like.

```
.text, #text, p{  
    color:rgb(176, 157, 138)  
}
```

If you want to add a text shadow in that color use the text-shadow property, you can generate a text shadow directly with our [CSS Text Shadow Generator](#).

Here you see how black text with a 4 pixel rgb(176, 157, 138) colored shadow looks like.

```
.shadow{ text-shadow: 4px 4px 2px rgb(176, 157, 138) }
```

Border

The CSS property to change the border of an element to CIELCh 66, 13.072, 72.773 is called "border". The border property can be set on classes, ids or directly on the HTML element.

This example shows the color as border, it can be applied via the CSS property "border" or "border-color".

```
.border, #border, table{ border:4px solid rgb(176, 157, 138) }
```

If only the border color should be changed use the property `border-color`.

```
.border{ border-color:rgb(176, 157, 138) }
```

If you want to add a box shadow in that color use:

Here you see how a box with a 4 pixel `rgb(176, 157, 138)` colored shadow looks like.

```
.boxshadow{ -moz-box-shadow:4px 4px 4px  
4px rgb(176, 157, 138); -webkit-box-  
shadow:4px 4px 4px 4px rgb(176, 157, 138);  
box-shadow:4px 4px 4px 4px rgb(176, 157,  
138) }
```

Background

The CSS property to change the background color of an element to CIELCh 66, 13.072, 72.773 is called "background". The background property can be set on classes, ids or directly on the HTML element.

```
.background, #background, body{  
background: rgb(176, 157, 138) }
```

If only the background color should be changed can be used:

```
.background{ background-color: rgb(176,  
157, 138) }
```

This example shows the color as background, it is applied via the CSS property "background".

To optimize and compress your CSS code, you can use our [online CSS compressor and optimizer](#) based on csstidy. If you want to create a linear or radial gradient as background or border, check our [CSS Gradient Generator](#).

Hey! You found this booklet interesting? Support Converting Colors with the new Membership Option!

The pro membership hides all ads, plus gives you double the colors in the color bucket, and more awesome pro features!

[Learn more, Memberships starting at \\$2.50/m!](#)

**Follow me
on Twitter!**

@ConvertingColor