

Converting Colors

CIELCh(66, 14.737, 19.017)

Have a look what the booklet for
CIELCh(66, 14.737, 19.017) contains.

CIELCh(66, 15.143, 18.762)	3
<i>Conversions</i>	4
<i>Details</i>	6
<i>Harmonies</i>	11
<i>Previews</i>	20
<i>Color Blindness Simulation</i>	23
<i>CSS Examples</i>	26

Color

CIELCh(66, 15.143, 18.762)

Conversions

Conversions Part 1

Format	Color
Hex	BD9798
RGB	189, 151, 152
RGB Percent	74%, 59%, 60%
CMY	0.2579, 0.4070, 0.4031
CMYK	0.00, 0.20, 0.20, 0.26
HSL	358°, 22%, 67%
HSV	358°, 20%, 74%
XYZ	37.8282, 35.3238, 34.6220
YIQ	162.4760, 22.3270, 8.3670

Conversions

Conversions Part 2

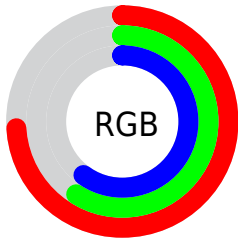
Format	Color
RYB	189, 151, 152
Decimal	12425112
CIELab	66.00, 14.34, 4.87
CIElCh	66, 15.143, 18.762
Yxy	35.3238, 0.3510, 0.3278
Android (android.graphics.Color)	4290615192 (0xFFBD9798)
YUV	162.4760, -5.1647, 23.2615
Hunter-Lab	59.4338, 9.6018, 7.0655

Details

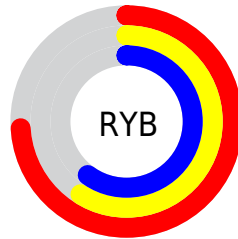
The CIELCh color **66, 15.143, 18.762** is a light color, and the websafe version is hex **CC9999**. A complement of this color would be **74, 13.369, 196.067**, and the grayscale version is **67, 0.008, 296.813**.

A 20% lighter version of the original color is **86, 15.369, 18.608**, and **46, 15.114, 19.131** is the 20% darker color. If you saturate the color by 10%, you get **61, 23.510, 19.896**, and if you desaturate by 10%, it is **71, 7.325, 17.858**.

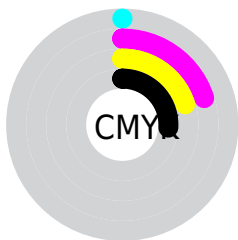
Distribution



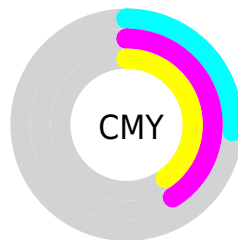
- Red (74%)
- Green (59%)
- Blue (60%)



- Red (74%)
- Yellow (59%)
- Blue (60%)



- Cyan (0%)
- Magenta (20%)
- Yellow (20%)
- Black (26%)



- Cyan (26%)
- Magenta (41%)
- Yellow (40%)

Brightness & Saturation Gradients

These gradients show how the CIELCh color 66, 15.143, 18.762 changes by changing the brightness by 10 percent. The first figure shows a shift by +10% for each color and the second figure -10%.

Similar to the brightness gradients but the following saturation gradients show a change of the CIELCh color 66, 15.143, 18.762 by changing the saturation by 10% instead.

■ 66, 15.143, 18.762

■ 66, 15.143, 18.762

■ 100, 15.143,
18.762

■ 56, 15.143, 18.762

■ 86, 15.143, 18.762

■ 46, 15.143, 18.762

■ 96, 15.143, 18.762

■ 36, 15.143, 18.762

■ 26, 15.143, 18.762

■ 16, 15.143, 18.762

■ 6, 15.143, 18.762

■ 0, 15.143, 18.762

■ 66, 15.143, 18.762

■ 66, 15.143, 18.762

■ 61, 23.510, 19.896

■ 71, 7.325, 17.858

56, 32.377, 21.338

77, 0.062, 8.711

52, 41.618, 23.199

82, 6.677, 196.756

48, 51.022, 25.593

88, 12.935,
196.263

44, 60.296, 28.609

93, 18.761,
195.874

42, 69.072, 32.207

40, 76.761, 36.005

96, 21.328,
198.104

39, 82.398, 38.968

Harmonies

Complementary

The Complementary color scheme is a pair of colors which are on the opposite of each other on the color wheel.



66, 15.143, 18.762



74, 13.369, 196.067

Rectangle

The Rectangle color scheme consists of four colors that form a rectangle on the color wheel.



66, 15.143, 18.762



66, 15.143, 68.762



66, 15.143, 198.762



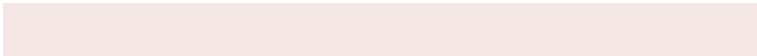
66, 15.143, 248.762

Sweetspot

The Sweet Spot groups the original color and five complimentary colors.



66, 15.141, 18.769



92, 5.292, 17.513



67, 24.965, 324.588



49, 3.517, 17.571



98, 0.011, 296.813



51, 0.007, 296.813

Same Dimension

The Same Dimension uses a secret algorithm to generate beautiful new colors.



66, 15.141, 18.769



81, 22.654, 19.221



70, 12.641, 69.352



37, 4.095, 17.795



32, 71.788, 38.607



3, 12.260, 17.894

Inverse Universe

The Inverse Universe completely reimagines the original color for something new.



66, 15.141, 18.769



81, 22.654, 19.221



69, 11.861, 254.513



37, 4.095, 17.795



32, 71.788, 38.607



3, 12.260, 17.894

Previews

White Background



This preview shows how the CIELCh color 66, 15.143, 18.762 looks on a white background.

Color Contrast Check

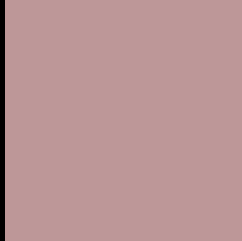
Large Text (above 18pt) WCAG AA × Fail

Any Text WCAG AA × Fail

Large Text (above 18pt) WCAG AAA × Fail

Any Text WCAG AAA × Fail

Black Background



This preview shows how the CIE LCh color 66, 15.143, 18.762 looks on a black background.

Color Contrast Check

Large Text (above 18pt) WCAG AA ✓ Pass

Any Text WCAG AA ✓ Pass

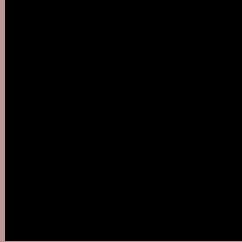
Large Text (above 18pt) WCAG AAA ✓ Pass

Any Text WCAG AAA ✓ Pass

If you want to check with other color combinations, try the [Color Contrast Checker](#).

CIELCh 66, 15.143, 18.762

Background



This preview shows how black text looks on a background with the CIELCh color 66, 15.143, 18.762.



This preview shows how white text looks on a background with the CIELCh color 66, 15.143, 18.762.

Color Blindness Simulation

Color vision deficiency is a very complex topic, and I could not describe the different causes any better than Wikipedia does, so if you want to learn more, you should check out their [article about color blindness](#).

Dichromacy



Original Color

66, 15.143, 18.762

Protanopia

66, 2.248, 66.695

Deuteranopia

66, 10.174, 32.715



Tritanopia
66, 16.711, 359.860

Trichromacy



Original Color
66, 15.143, 18.762

Protanomaly
66, 6.346, 29.884

Deuteranomaly
66, 11.665, 28.530

Tritanomaly
66, 16.293, 5.373

Monochromacy



Original Color
66, 15.143, 18.762

Achromatopsia
67, 0.008, 296.813

Achromatomaly
67, 5.421, 19.814

CSS Examples

Text

The CSS property to change the color of the text to CIELCh 66, 15.143, 18.762 is called "color". The color property can be set on classes, ids or directly on the HTML element.

This example shows how text in the color `rgb(189, 151, 152)` looks like.

```
.text, #text, p{  
    color:rgb(189, 151, 152)  
}
```

If you want to add a text shadow in that color use the text-shadow property, you can generate a text shadow directly with our [CSS Text Shadow Generator](#).

Here you see how black text with a 4 pixel rgb(189, 151, 152) colored shadow looks like.

```
.shadow{ text-shadow: 4px 4px 2px rgb(189, 151, 152) }
```

Border

The CSS property to change the border of an element to CIELCh 66, 15.143, 18.762 is called "border". The border property can be set on classes, ids or directly on the HTML element.

This example shows the color as border, it can be applied via the CSS property "border" or "border-color".

```
.border, #border, table{ border:4px solid rgb(189, 151, 152) }
```

If only the border color should be changed use the property `border-color`.

```
.border{ border-color:rgb(189, 151, 152) }
```

If you want to add a box shadow in that color use:

Here you see how a box with a 4 pixel `rgb(189, 151, 152)` colored shadow looks like.

```
.boxshadow{ -moz-box-shadow:4px 4px 4px  
4px rgb(189, 151, 152); -webkit-box-  
shadow:4px 4px 4px 4px rgb(189, 151, 152);  
box-shadow:4px 4px 4px 4px rgb(189, 151,  
152) }
```

Background

The CSS property to change the background color of an element to CIELCh 66, 15.143, 18.762 is called "background". The background property can be set on classes, ids or directly on the HTML element.

```
.background, #background, body{  
background: rgb(189, 151, 152) }
```

If only the background color should be changed can be used:

```
.background{ background-color: rgb(189,  
151, 152) }
```

This example shows the color as background, it is applied via the CSS property "background".

To optimize and compress your CSS code, you can use our [online CSS compressor and optimizer](#) based on csstidy. If you want to create a linear or radial gradient as background or border, check our [CSS Gradient Generator](#).

Hey! You found this booklet interesting? Support Converting Colors with the new Membership Option!

The pro membership hides all ads, plus gives you double the colors in the color bucket, and more awesome pro features!

[Learn more, Memberships starting at \\$2.50/m!](#)

**Follow me
on Twitter!**

@ConvertingColor