

Converting Colors

CIELCh(66, 14.903, 58.896)

Have a look what the booklet for
CIELCh(66, 14.903, 58.896) contains.

CIELCh(66, 14.903, 58.896)	3
<i>Conversions</i>	4
<i>Details</i>	6
<i>Harmonies</i>	11
<i>Previews</i>	20
<i>Color Blindness Simulation</i>	23
<i>CSS Examples</i>	26

Color

CIELCh(66, 14.903, 58.896)

Conversions

Conversions Part 1

Format	Color
Hex	B79B8A
RGB	183, 155, 138
RGB Percent	72%, 61%, 54%
CMY	0.2825, 0.3923, 0.4590
CMYK	0.00, 0.15, 0.25, 0.28
HSL	23°, 24%, 63%
HSV	23°, 25%, 72%
XYZ	35.8163, 35.3238, 28.9591
YIQ	161.4340, 22.1450, 0.6490

Conversions

Conversions Part 2

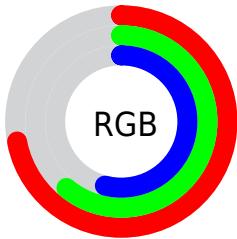
Format	Color
RYB	183, 165, 138
Decimal	12032906
CIELab	66.00, 7.70, 12.76
CIElCh	66, 14.903, 58.896
Yxy	35.3238, 0.3578, 0.3529
Android (android.graphics.Color)	4290222986 (0xFFB79B8A)
YUV	161.4340, -11.5530, 18.9134
Hunter-Lab	59.4338, 3.5593, 12.7147

Details

The CIELCh color **66, 14.903, 58.896** is a light color, and the websafe version is hex **CC9999**. A complement of this color would be **67, 13.268, 244.219**, and the grayscale version is **66, 0.008, 296.813**.

A 20% lighter version of the original color is **86, 14.907, 58.941**, and **46, 14.797, 59.741** is the 20% darker color. If you saturate the color by 10%, you get **63, 21.684, 58.051**, and if you desaturate by 10%, it is **69, 8.554, 59.788**.

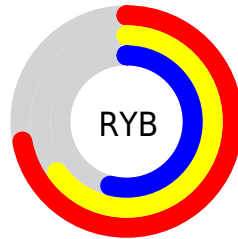
Distribution



Red (72%)

Green (61%)

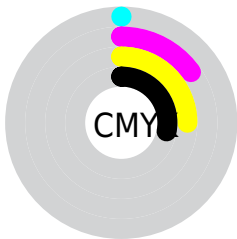
Blue (54%)



Red (72%)

Yellow (65%)

Blue (54%)

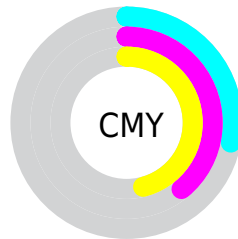


Cyan (0%)

Magenta (15%)

Yellow (25%)

Black (28%)



Cyan (28%)

Magenta (39%)

Yellow (46%)

Brightness & Saturation Gradients

These gradients show how the CIELCh color 66, 14.903, 58.896 changes by changing the brightness by 10 percent. The first figure shows a shift by +10% for each color and the second figure -10%.

Similar to the brightness gradients but the following saturation gradients show a change of the CIELCh color 66, 14.903, 58.896 by changing the saturation by 10% instead.

66, 14.903, 58.896

66, 14.903, 58.896

100, 14.903,
58.896

56, 14.903, 58.896

86, 14.903, 58.896

46, 14.903, 58.896

96, 14.903, 58.896

36, 14.903, 58.896

26, 14.903, 58.896

16, 14.903, 58.896

6, 14.903, 58.896

0, 14.903, 58.896

66, 14.903, 58.896

66, 14.903, 58.896

63, 21.684, 58.051

69, 8.554, 59.788

59, 28.918, 57.246

73, 2.605, 60.604

56, 36.591, 56.496

76, 2.984, 241.857

53, 44.626, 55.785

80, 8.252, 242.710

51, 52.817, 55.043

83, 13.237,
243.627

48, 60.690, 54.097

87, 17.973,
244.539

46, 67.337, 52.576

45, 70.581, 51.744

90, 19.309,
231.950

93, 20.603,
211.283

95, 23.146,
197.991

Harmonies

Complementary

The Complementary color scheme is a pair of colors which are on the opposite of each other on the color wheel.



66, 14.903, 58.896



67, 13.268, 244.219

Rectangle

The Rectangle color scheme consists of four colors that form a rectangle on the color wheel.



66, 14.903, 58.896



66, 14.903, 108.896



66, 14.903, 238.896



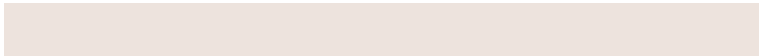
66, 14.903, 288.896

Sweetspot

The Sweet Spot groups the original color and five complimentary colors.



66, 14.903, 58.905



91, 4.943, 60.427



63, 23.336, 338.980



48, 3.244, 60.380



97, 0.011, 296.813



50, 0.007, 296.813

Same Dimension

The Same Dimension uses a secret algorithm to generate beautiful new colors.



66, 14.903, 58.905



81, 22.897, 58.396



72, 21.193, 101.472



37, 3.273, 60.245



38, 62.345, 52.229



4, 8.755, 48.641

Inverse Universe

The Inverse Universe completely reimagines the original color for something new.



67, 13.268, 244.219



82, 19.746, 245.179



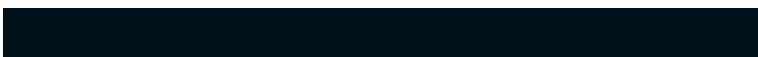
61, 22.044, 287.260



37, 3.146, 242.247



39, 38.593, 268.433



5, 9.150, 255.303

Previews

White Background



This preview shows how the CIELCh color 66, 14.903, 58.896 looks on a white background.

Color Contrast Check

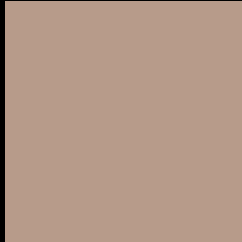
Large Text (above 18pt) WCAG AA × Fail

Any Text WCAG AA × Fail

Large Text (above 18pt) WCAG AAA × Fail

Any Text WCAG AAA × Fail

Black Background



This preview shows how the CIELCh color 66, 14.903, 58.896 looks on a black background.

Color Contrast Check

Large Text (above 18pt) WCAG AA ✓ Pass

Any Text WCAG AA ✓ Pass

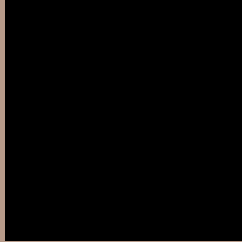
Large Text (above 18pt) WCAG AAA ✓ Pass

Any Text WCAG AAA ✓ Pass

If you want to check with other color combinations, try the [Color Contrast Checker](#).

CIELCh 66, 14.903, 58.896

Background



This preview shows how black text looks on a background with the CIELCh color 66, 14.903, 58.896.



This preview shows how white text looks on a background with the CIELCh color 66, 14.903, 58.896.

Color Blindness Simulation

Color vision deficiency is a very complex topic, and I could not describe the different causes any better than Wikipedia does, so if you want to learn more, you should check out their [article about color blindness](#).

Dichromacy



Original Color

66, 14.903, 58.896

Protanopia

66, 10.952, 92.014

Deuteranopia

66, 15.233, 57.925



Tritanopia
66, 15.076, 354.891

Trichromacy



Original Color
66, 14.903, 58.896

Protanomaly
66, 11.656, 77.764

Deuteranomaly
66, 15.233, 57.925

Tritanomaly
66, 13.091, 15.823

Monochromacy



Original Color
66, 14.903, 58.896

Achromatopsia
66, 0.008, 296.813

Achromatomaly
66, 5.111, 59.897

CSS Examples

Text

The CSS property to change the color of the text to CIELCh 66, 14.903, 58.896 is called "color". The color property can be set on classes, ids or directly on the HTML element.

This example shows how text in the color `rgb(183, 155, 138)` looks like.

```
.text, #text, p{  
    color:rgb(183, 155, 138)  
}
```

If you want to add a text shadow in that color use the text-shadow property, you can generate a text shadow directly with our [CSS Text Shadow Generator](#).

Here you see how black text with a 4 pixel rgb(183, 155, 138) colored shadow looks like.

```
.shadow{ text-shadow: 4px 4px 2px rgb(183, 155, 138) }
```

Border

The CSS property to change the border of an element to CIELCh 66, 14.903, 58.896 is called "border". The border property can be set on classes, ids or directly on the HTML element.

This example shows the color as border, it can be applied via the CSS property "border" or "border-color".

```
.border, #border, table{ border:4px solid rgb(183, 155, 138) }
```

If only the border color should be changed use the property `border-color`.

```
.border{ border-color:rgb(183, 155, 138) }
```

If you want to add a box shadow in that color use:

Here you see how a box with a 4 pixel `rgb(183, 155, 138)` colored shadow looks like.

```
.boxshadow{ -moz-box-shadow:4px 4px 4px  
4px rgb(183, 155, 138); -webkit-box-  
shadow:4px 4px 4px 4px rgb(183, 155, 138);  
box-shadow:4px 4px 4px 4px rgb(183, 155,  
138) }
```

Background

The CSS property to change the background color of an element to CIELCh 66, 14.903, 58.896 is called "background". The background property can be set on classes, ids or directly on the HTML element.

```
.background, #background, body{  
background: rgb(183, 155, 138) }
```

If only the background color should be changed can be used:

```
.background{ background-color: rgb(183,  
155, 138) }
```

This example shows the color as background, it is applied via the CSS property "background".

To optimize and compress your CSS code, you can use our [online CSS compressor and optimizer](#) based on csstidy. If you want to create a linear or radial gradient as background or border, check our [CSS Gradient Generator](#).

Hey! You found this booklet interesting? Support Converting Colors with the new Membership Option!

The pro membership hides all ads, plus gives you double the colors in the color bucket, and more awesome pro features!

[Learn more, Memberships starting at \\$2.50/m!](#)

**Follow me
on Twitter!**

@ConvertingColor