

Converting Colors

CIELCh(66, 15.168, 9.847)

Have a look what the booklet for
CIELCh(66, 15.168, 9.847) contains.

CIELCh(66, 15.227, 10.502)	3
<i>Conversions</i>	4
<i>Details</i>	6
<i>Harmonies</i>	11
<i>Previews</i>	20
<i>Color Blindness Simulation</i>	23
<i>CSS Examples</i>	26

Color

CIELCh(66, 15.227, 10.502)

Conversions

Conversions Part 1

Format	Color
Hex	BD979C
RGB	189, 151, 156
RGB Percent	74%, 59%, 61%
CMY	0.2591, 0.4081, 0.3885
CMYK	0.00, 0.20, 0.17, 0.26
HSL	352°, 22%, 67%
HSV	352°, 20%, 74%
XYZ	38.0241, 35.3238, 36.2407
YIQ	162.9320, 21.0430, 9.6110

Conversions

Conversions Part 2

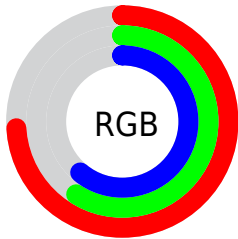
Format	Color
RYB	189, 151, 156
Decimal	12425116
CIELab	66.00, 14.97, 2.78
CIELCh	66, 15.227, 10.502
Yxy	35.3238, 0.3470, 0.3223
Android (android.graphics.Color)	4290615196 (0xFFBD979C)
YUV	162.9320, -3.4175, 22.8616
Hunter-Lab	59.4338, 10.1900, 5.4507

Details

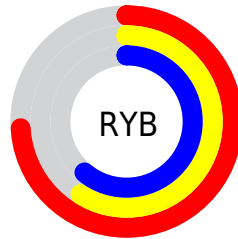
The CIELCh color $66, 15.227, 10.502$ is a light color, and the websafe version is hex `CC9999`. A complement of this color would be $74, 13.807, 186.991$, and the grayscale version is $67, 0.008, 296.813$.

A 20% lighter version of the original color is $86, 15.466, 10.895$, and $46, 15.162, 10.259$ is the 20% darker color. If you saturate the color by 10%, you get $61, 23.440, 11.794$, and if you desaturate by 10%, it is $71, 7.427, 9.426$.

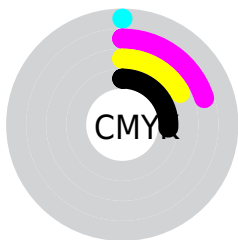
Distribution



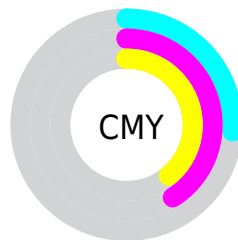
- Red (74%)
- Green (59%)
- Blue (61%)



- Red (74%)
- Yellow (59%)
- Blue (61%)



- Cyan (0%)
- Magenta (20%)
- Yellow (17%)
- Black (26%)



- Cyan (26%)
- Magenta (41%)
- Yellow (39%)

Brightness & Saturation Gradients

These gradients show how the CIELCh color 66, 15.227, 10.502 changes by changing the brightness by 10 percent. The first figure shows a shift by +10% for each color and the second figure -10%.

Similar to the brightness gradients but the following saturation gradients show a change of the CIELCh color 66, 15.227, 10.502 by changing the saturation by 10% instead.

■ 66, 15.227, 10.502

■ 66, 15.227, 10.502

■ 100, 15.227,
10.502

■ 56, 15.227, 10.502

■ 86, 15.227, 10.502

■ 46, 15.227, 10.502

■ 96, 15.227, 10.502

■ 36, 15.227, 10.502

■ 26, 15.227, 10.502

■ 16, 15.227, 10.502

■ 6, 15.227, 10.502

■ 0, 15.227, 10.502

■ 66, 15.227, 10.502

■ 66, 15.227, 10.502

■ 61, 23.440, 11.794

■ 71, 7.427, 9.426

56, 31.984, 13.378

77, 0.080, 2.313

52, 40.693, 15.365

82, 6.821, 187.952

48, 49.321, 17.883

87, 13.299,
187.277

44, 57.569, 21.068

93, 19.389,
186.707

42, 65.153, 25.006

40, 71.879, 29.608

96, 21.449,
197.264

39, 77.678, 34.176

96, 21.412,
198.099

Harmonies

Complementary

The Complementary color scheme is a pair of colors which are on the opposite of each other on the color wheel.



66, 15.227, 10.502



74, 13.807, 186.991

Rectangle

The Rectangle color scheme consists of four colors that form a rectangle on the color wheel.



66, 15.227, 10.502



66, 15.227, 60.502



66, 15.227, 190.502



66, 15.227, 240.502

Sweetspot

The Sweet Spot groups the original color and five complimentary colors.



66, 15.225, 10.508



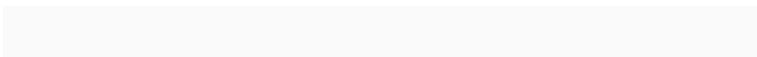
93, 5.375, 9.011



66, 24.272, 321.695



49, 3.571, 9.080



98, 0.011, 296.813



51, 0.007, 296.813

Same Dimension

The Same Dimension uses a secret algorithm to generate beautiful new colors.



66, 15.225, 10.508



81, 22.703, 11.027



69, 12.312, 57.999



37, 4.150, 9.349



33, 67.572, 33.472



3, 12.380, 11.874

Inverse Universe

The Inverse Universe completely reimagines the original color for something new.



66, 15.225, 10.508



81, 22.703, 11.027



70, 11.179, 242.120



37, 4.150, 9.349



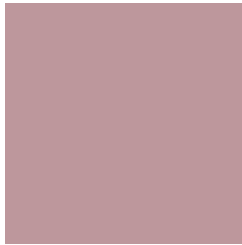
33, 67.572, 33.472



3, 12.380, 11.874

Previews

White Background



This preview shows how the CIELCh color 66, 15.227, 10.502 looks on a white background.

Color Contrast Check

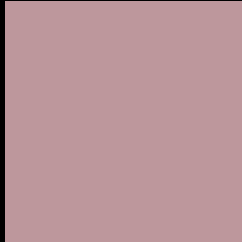
Large Text (above 18pt) WCAG AA × Fail

Any Text WCAG AA × Fail

Large Text (above 18pt) WCAG AAA × Fail

Any Text WCAG AAA × Fail

Black Background



This preview shows how the CIELCh color 66, 15.227, 10.502 looks on a black background.

Color Contrast Check

Large Text (above 18pt) WCAG AA ✓ Pass

Any Text WCAG AA ✓ Pass

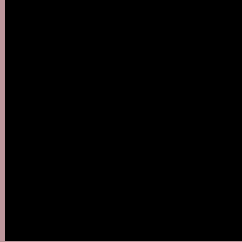
Large Text (above 18pt) WCAG AAA ✓ Pass

Any Text WCAG AAA ✓ Pass

If you want to check with other color combinations, try the [Color Contrast Checker](#).

CIELCh 66, 15.227, 10.502

Background



This preview shows how black text looks on a background with the CIELCh color 66, 15.227, 10.502.



This preview shows how white text looks on a background with the CIELCh color 66, 15.227, 10.502.

Color Blindness Simulation

Color vision deficiency is a very complex topic, and I could not describe the different causes any better than Wikipedia does, so if you want to learn more, you should check out their [article about color blindness](#).

Dichromacy



Original Color


66, 15.227, 10.502

Protanopia

66, 1.281, 353.543

Deuteranopia

66, 9.029, 20.197



Tritanopia
66, 16.885, 358.091

Trichromacy



Original Color
66, 15.227, 10.502

Protanomaly
66, 5.913, 9.134

Deuteranomaly
66, 11.039, 17.559

Tritanomaly
66, 16.553, 1.665

Monochromacy



Original Color
66, 15.227, 10.502

Achromatopsia
67, 0.008, 296.813

Achromatomaly
67, 5.051, 13.523

CSS Examples

Text

The CSS property to change the color of the text to CIELCh 66, 15.227, 10.502 is called "color". The color property can be set on classes, ids or directly on the HTML element.

This example shows how text in the color `rgb(189, 151, 156)` looks like.

```
.text, #text, p{  
    color:rgb(189, 151, 156)  
}
```

If you want to add a text shadow in that color use the text-shadow property, you can generate a text shadow directly with our [CSS Text Shadow Generator](#).

Here you see how black text with a 4 pixel rgb(189, 151, 156) colored shadow looks like.

```
.shadow{ text-shadow: 4px 4px 2px rgb(189, 151, 156) }
```

Border

The CSS property to change the border of an element to CIELCh 66, 15.227, 10.502 is called "border". The border property can be set on classes, ids or directly on the HTML element.

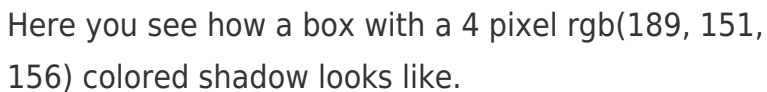
This example shows the color as border, it can be applied via the CSS property "border" or "border-color".

```
.border, #border, table{ border:4px solid rgb(189, 151, 156) }
```

If only the border color should be changed use the property `border-color`.

```
.border{ border-color:rgb(189, 151, 156) }
```

If you want to add a box shadow in that color use:



Here you see how a box with a 4 pixel `rgb(189, 151, 156)` colored shadow looks like.

```
.boxshadow{ -moz-box-shadow:4px 4px 4px 4px rgb(189, 151, 156); -webkit-box-shadow:4px 4px 4px 4px rgb(189, 151, 156); box-shadow:4px 4px 4px 4px rgb(189, 151, 156) }
```

Background

The CSS property to change the background color of an element to CIELCh 66, 15.227, 10.502 is called "background". The background property can be set on classes, ids or directly on the HTML element.

```
.background, #background, body{  
background: rgb(189, 151, 156) }
```

If only the background color should be changed can be used:

```
.background{ background-color: rgb(189,  
151, 156) }
```

This example shows the color as background, it is applied via the CSS property "background".

To optimize and compress your CSS code, you can use our [online CSS compressor and optimizer](#) based on csstidy. If you want to create a linear or radial gradient as background or border, check our [CSS Gradient Generator](#).

Hey! You found this booklet interesting? Support Converting Colors with the new Membership Option!

The pro membership hides all ads, plus gives you double the colors in the color bucket, and more awesome pro features!

[Learn more, Memberships starting at \\$2.50/m!](#)

**Follow me
on Twitter!**

@ConvertingColor