

Converting Colors

CIELCh(66, 15.227, 26.577)

Have a look what the booklet for
CIELCh(66, 15.227, 26.577) contains.

CIELCh(66, 14.958, 27.056)	3
<i>Conversions</i>	4
<i>Details</i>	6
<i>Harmonies</i>	11
<i>Previews</i>	20
<i>Color Blindness Simulation</i>	23
<i>CSS Examples</i>	26

Color

CIELCh(66, 14.958, 27.056)

Conversions

Conversions Part 1

Format	Color
Hex	BD9895
RGB	189, 152, 149
RGB Percent	74%, 60%, 58%
CMY	0.2598, 0.4049, 0.4166
CMYK	0.00, 0.20, 0.21, 0.26
HSL	5°, 23%, 66%
HSV	5°, 21%, 74%
XYZ	37.5152, 35.3238, 33.1717
YIQ	162.7210, 23.0150, 6.9110

Conversions

Conversions Part 2

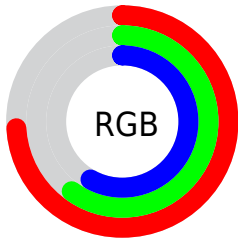
Format	Color
R _Y B	189, 152, 149
Decimal	12425365
CIE Lab	66.00, 13.32, 6.80
CIE LCh	66, 14.958, 27.056
Yxy	35.3238, 0.3539, 0.3332
Android (android.graphics.Color)	4290615445 (0xFFBD9895)
YUV	162.7210, -6.7645, 23.0467
Hunter-Lab	59.4338, 8.6617, 8.5122

Details

The CIELCh color **66, 14.958, 27.056** is a light color, and the websafe version is hex **CC9999**. A complement of this color would be **73, 12.963, 205.704**, and the grayscale version is **67, 0.008, 296.813**.

A 20% lighter version of the original color is **86, 15.163, 26.384**, and **46, 14.972, 27.960** is the 20% darker color. If you saturate the color by 10%, you get **61, 22.921, 27.813**, and if you desaturate by 10%, it is **71, 7.581, 26.497**.

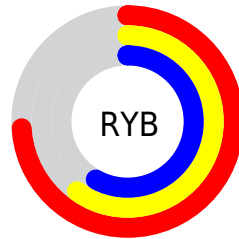
Distribution



Red (74%)

Green (60%)

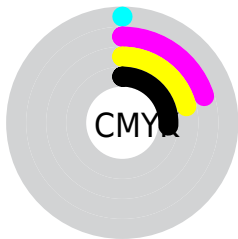
Blue (58%)



Red (74%)

Yellow (60%)

Blue (58%)

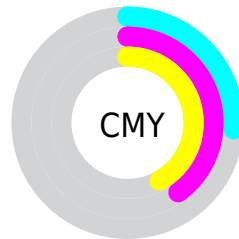


Cyan (0%)

Magenta (20%)

Yellow (21%)

Black (26%)



Cyan (26%)

Magenta (40%)

Yellow (42%)

Brightness & Saturation Gradients

These gradients show how the CIELCh color 66, 14.958, 27.056 changes by changing the brightness by 10 percent. The first figure shows a shift by +10% for each color and the second figure -10%.

Similar to the brightness gradients but the following saturation gradients show a change of the CIELCh color 66, 14.958, 27.056 by changing the saturation by 10% instead.

■ 66, 14.958, 27.056

■ 66, 14.958, 27.056

■ 100, 14.958,
27.056

■ 56, 14.958, 27.056

■ 86, 14.958, 27.056

■ 46, 14.958, 27.056

■ 96, 14.958, 27.056

■ 36, 14.958, 27.056

■ 26, 14.958, 27.056

■ 16, 14.958, 27.056

■ 6, 14.958, 27.056

■ 0, 14.958, 27.056

■ 66, 14.958, 27.056

■ 66, 14.958, 27.056

■ 61, 22.921, 27.813

■ 71, 7.581, 26.497

57, 31.465, 28.822

76, 0.772, 25.500

52, 40.526, 30.168

81, 5.515, 206.026

49, 49.964, 31.922

86, 11.330,
205.803

45, 59.538, 34.112

91, 16.726,
205.680

43, 68.819, 36.631

41, 76.922, 39.024

96, 21.470,
198.095

40, 82.342, 40.798

Harmonies

Complementary

The Complementary color scheme is a pair of colors which are on the opposite of each other on the color wheel.



66, 14.958, 27.056



73, 12.963, 205.704

Rectangle

The Rectangle color scheme consists of four colors that form a rectangle on the color wheel.



66, 14.958, 27.056



66, 14.958, 77.056



66, 14.958, 207.056



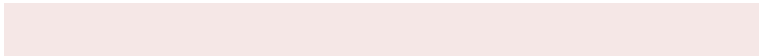
66, 14.958, 257.056

Sweetspot

The Sweet Spot groups the original color and five complimentary colors.



66, 14.957, 27.064



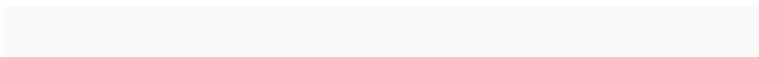
93, 4.921, 26.227



66, 25.365, 327.469



49, 3.271, 26.265



98, 0.011, 296.813



51, 0.007, 296.813

Same Dimension

The Same Dimension uses a secret algorithm to generate beautiful new colors.



66, 14.957, 27.064



81, 22.177, 27.353



71, 14.170, 79.559



37, 3.812, 26.403



33, 71.780, 40.725



3, 11.639, 23.969

Inverse Universe

The Inverse Universe completely reimagines the original color for something new.



73, 12.963, 205.704



91, 18.622, 205.645



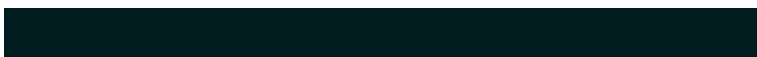
68, 13.707, 265.392



39, 3.590, 205.983



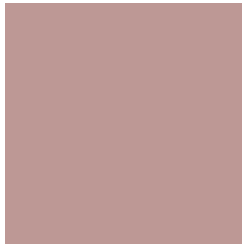
55, 31.945, 209.141



8, 10.552, 207.012

Previews

White Background



This preview shows how the CIELCh color 66, 14.958, 27.056 looks on a white background.

Color Contrast Check

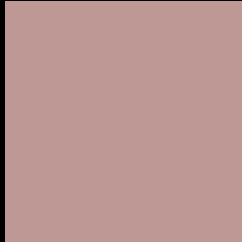
Large Text (above 18pt) WCAG AA × Fail

Any Text WCAG AA × Fail

Large Text (above 18pt) WCAG AAA × Fail

Any Text WCAG AAA × Fail

Black Background



This preview shows how the CIELCh color 66, 14.958, 27.056 looks on a black background.

Color Contrast Check

Large Text (above 18pt) WCAG AA ✓ Pass

Any Text WCAG AA ✓ Pass

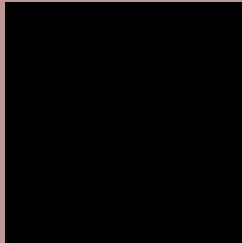
Large Text (above 18pt) WCAG AAA ✓ Pass

Any Text WCAG AAA ✓ Pass

If you want to check with other color combinations, try the [Color Contrast Checker](#).

CIELCh 66, 14.958, 27.056

Background



This preview shows how black text looks on a background with the CIELCh color 66, 14.958, 27.056.



This preview shows how white text looks on a background with the CIELCh color 66, 14.958, 27.056.

Color Blindness Simulation

Color vision deficiency is a very complex topic, and I could not describe the different causes any better than Wikipedia does, so if you want to learn more, you should check out their [article about color blindness](#).

Dichromacy



Original Color

66, 14.958, 27.056

Protanopia

66, 4.311, 82.912

Deuteranopia

66, 11.117, 40.475



Tritanopia
66, 16.711, 359.860

Trichromacy



Original Color
66, 14.958, 27.056

Protanomaly
66, 7.485, 46.074

Deuteranomaly
66, 12.501, 35.689

Tritanomaly
66, 15.693, 8.829

Monochromacy



Original Color
66, 14.958, 27.056

Achromatopsia
67, 0.008, 296.813

Achromatomaly
66, 5.466, 25.593

CSS Examples

Text

The CSS property to change the color of the text to CIELCh 66, 14.958, 27.056 is called "color". The color property can be set on classes, ids or directly on the HTML element.

This example shows how text in the color `rgb(189, 152, 149)` looks like.

```
.text, #text, p{  
    color:rgb(189, 152, 149)  
}
```

If you want to add a text shadow in that color use the text-shadow property, you can generate a text shadow directly with our [CSS Text Shadow Generator](#).

Here you see how black text with a 4 pixel rgb(189, 152, 149) colored shadow looks like.

```
.shadow{ text-shadow: 4px 4px 2px rgb(189, 152, 149) }
```

Border

The CSS property to change the border of an element to CIELCh 66, 14.958, 27.056 is called "border". The border property can be set on classes, ids or directly on the HTML element.

This example shows the color as border, it can be applied via the CSS property "border" or "border-color".

```
.border, #border, table{ border:4px solid rgb(189, 152, 149) }
```

If only the border color should be changed use the property `border-color`.

```
.border{ border-color:rgb(189, 152, 149) }
```

If you want to add a box shadow in that color use:

Here you see how a box with a 4 pixel `rgb(189, 152, 149)` colored shadow looks like.

```
.boxshadow{ -moz-box-shadow:4px 4px 4px  
4px rgb(189, 152, 149); -webkit-box-  
shadow:4px 4px 4px 4px rgb(189, 152, 149);  
box-shadow:4px 4px 4px 4px rgb(189, 152,  
149) }
```

Background

The CSS property to change the background color of an element to CIELCh 66, 14.958, 27.056 is called "background". The background property can be set on classes, ids or directly on the HTML element.

```
.background, #background, body{  
background: rgb(189, 152, 149) }
```

If only the background color should be changed can be used:

```
.background{ background-color: rgb(189,  
152, 149) }
```

This example shows the color as background, it is applied via the CSS property "background".

To optimize and compress your CSS code, you can use our [online CSS compressor and optimizer](#) based on csstidy. If you want to create a linear or radial gradient as background or border, check our [CSS Gradient Generator](#).

Hey! You found this booklet interesting? Support Converting Colors with the new Membership Option!

The pro membership hides all ads, plus gives you double the colors in the color bucket, and more awesome pro features!

[Learn more, Memberships starting at \\$2.50/m!](#)

**Follow me
on Twitter!**

@ConvertingColor