

Converting Colors

CIELCh(66, 21.058, 36.750)

Have a look what the booklet for
CIELCh(66, 21.058, 36.750) contains.

CIELCh(66, 21.061, 36.206)	3
<i>Conversions</i>	4
<i>Details</i>	6
<i>Harmonies</i>	11
<i>Previews</i>	20
<i>Color Blindness Simulation</i>	23
<i>CSS Examples</i>	26

Color

CIELCh(66, 21.061, 36.206)

Conversions

Conversions Part 1

Format	Color
Hex	C6958B
RGB	198, 149, 139
RGB Percent	78%, 58%, 55%
CMY	0.2239, 0.4160, 0.4552
CMYK	0.00, 0.25, 0.30, 0.22
HSL	10°, 34%, 66%
HSV	10°, 30%, 78%
XYZ	38.6536, 35.3238, 29.1757
YIQ	162.5110, 32.4140, 7.2780

Conversions

Conversions Part 2

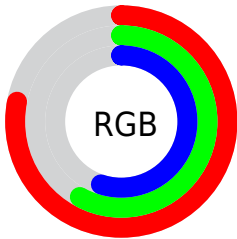
Format	Color
R _Y B	198, 151, 139
Decimal	13014411
CIE Lab	66.00, 16.99, 12.44
CIE LCh	66, 21.061, 36.206
Yxy	35.3238, 0.3747, 0.3424
Android (android.graphics.Color)	4291204491 (0xFFC6958B)
YUV	162.5110, -11.5909, 31.1239
Hunter-Lab	59.4338, 12.0808, 12.4986

Details

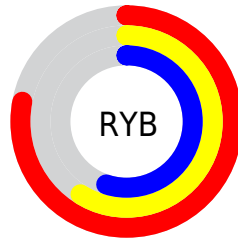
The CIELCh color **66, 21.061, 36.206** is a light color, and the websafe version is hex **CC9999**. A complement of this color would be **73, 17.093, 216.881**, and the grayscale version is **67, 0.008, 296.813**.

A 20% lighter version of the original color is **86, 20.953, 36.591**, and **46, 21.116, 36.207** is the 20% darker color. If you saturate the color by 10%, you get **62, 29.314, 36.615**, and if you desaturate by 10%, it is **71, 13.422, 35.989**.

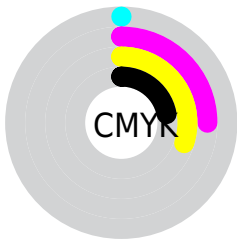
Distribution



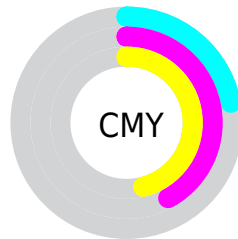
- Red (78%)
- Green (58%)
- Blue (55%)



- Red (78%)
- Yellow (59%)
- Blue (55%)



- Cyan (0%)
- Magenta (25%)
- Yellow (30%)
- Black (22%)



- Cyan (22%)
- Magenta (42%)
- Yellow (46%)

Brightness & Saturation Gradients

These gradients show how the CIELCh color 66, 21.061, 36.206 changes by changing the brightness by 10 percent. The first figure shows a shift by +10% for each color and the second figure -10%.

Similar to the brightness gradients but the following saturation gradients show a change of the CIELCh color 66, 21.061, 36.206 by changing the saturation by 10% instead.

66, 21.061, 36.206

66, 21.061, 36.206

100, 21.061,
36.206

56, 21.061, 36.206

86, 21.061, 36.206

46, 21.061, 36.206

96, 21.061, 36.206

36, 21.061, 36.206

26, 21.061, 36.206

16, 21.061, 36.206

6, 21.061, 36.206

0, 21.061, 36.206

66, 21.061, 36.206

66, 21.061, 36.206

62, 29.314, 36.615

71, 13.422, 35.989

57, 38.174, 37.246

75, 6.376, 35.880

54, 47.570, 38.144

80, 0.122, 220.472

50, 57.330, 39.313

85, 6.123, 216.231

47, 67.082, 40.657

90, 11.681,
216.378

45, 75.998, 41.832

94, 16.604,
211.899

43, 82.978, 42.511

43, 83.110, 42.537

96, 18.736,
198.267

Harmonies

Complementary

The Complementary color scheme is a pair of colors which are on the opposite of each other on the color wheel.



66, 21.061, 36.206



73, 17.093, 216.881

Rectangle

The Rectangle color scheme consists of four colors that form a rectangle on the color wheel.



66, 21.061, 36.206



66, 21.061, 86.206



66, 21.061, 216.206



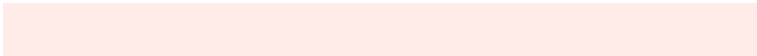
66, 21.061, 266.206

Sweetspot

The Sweet Spot groups the original color and five complimentary colors.



66, 21.060, 36.213



95, 7.167, 35.874



65, 34.595, 331.228



50, 5.011, 35.888



0, 0.000, 0.000



53, 0.007, 296.813

Same Dimension

The Same Dimension uses a secret algorithm to generate beautiful new colors.



66, 21.060, 36.213



80, 32.132, 36.461



73, 22.723, 87.307



39, 3.695, 35.876



35, 71.667, 42.797



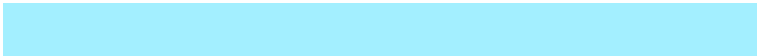
5, 14.382, 29.174

Inverse Universe

The Inverse Universe completely reimagines the original color for something new.



73, 17.093, 216.881



90, 24.680, 217.282



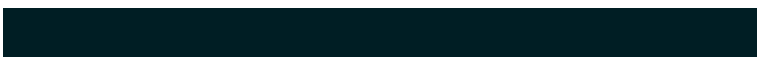
65, 22.575, 275.700



41, 3.482, 216.232



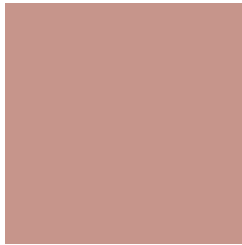
52, 31.184, 228.567



9, 11.287, 220.887

Previews

White Background



This preview shows how the CIELCh color 66, 21.061, 36.206 looks on a white background.

Color Contrast Check

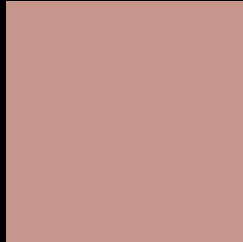
Large Text (above 18pt) WCAG AA × Fail

Any Text WCAG AA × Fail

Large Text (above 18pt) WCAG AAA × Fail

Any Text WCAG AAA × Fail

Black Background



This preview shows how the CIELCh color 66, 21.061, 36.206 looks on a black background.

Color Contrast Check

Large Text (above 18pt) WCAG AA ✓ Pass

Any Text WCAG AA ✓ Pass

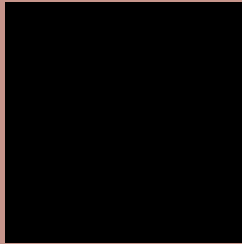
Large Text (above 18pt) WCAG AAA ✓ Pass

Any Text WCAG AAA ✓ Pass

If you want to check with other color combinations, try the [Color Contrast Checker](#).

CIELCh 66, 21.061, 36.206

Background



This preview shows how black text looks on a background with the CIELCh color 66, 21.061, 36.206.

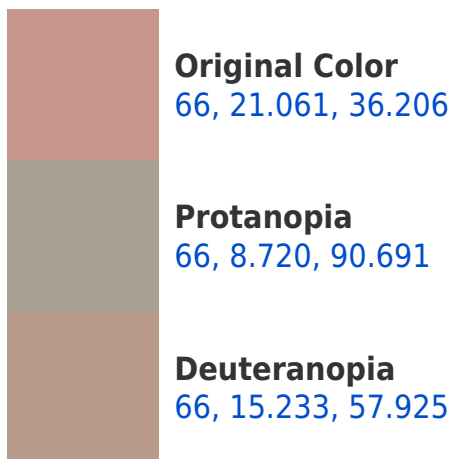


This preview shows how white text looks on a background with the CIELCh color 66, 21.061, 36.206.

Color Blindness Simulation

Color vision deficiency is a very complex topic, and I could not describe the different causes any better than Wikipedia does, so if you want to learn more, you should check out their [article about color blindness](#).

Dichromacy





Tritanopia
66, 22.111, 5.876

Trichromacy



Original Color
66, 21.061, 36.206

Protanomaly
66, 11.452, 58.597

Deuteranomaly
66, 17.080, 49.272

Tritanomaly
66, 20.941, 16.988

Monochromacy



Original Color
66, 21.061, 36.206

Achromatopsia
67, 0.008, 296.813

Achromatomaly
66, 7.254, 33.113

CSS Examples

Text

The CSS property to change the color of the text to CIELCh 66, 21.061, 36.206 is called "color". The color property can be set on classes, ids or directly on the HTML element.

This example shows how text in the color `rgb(198, 149, 139)` looks like.

```
.text, #text, p{  
    color:rgb(198, 149, 139)  
}
```

If you want to add a text shadow in that color use the text-shadow property, you can generate a text shadow directly with our [CSS Text Shadow Generator](#).

Here you see how black text with a 4 pixel rgb(198, 149, 139) colored shadow looks like.

```
.shadow{ text-shadow: 4px 4px 2px rgb(198, 149, 139) }
```

Border

The CSS property to change the border of an element to CIELCh 66, 21.061, 36.206 is called "border". The border property can be set on classes, ids or directly on the HTML element.

This example shows the color as border, it can be applied via the CSS property "border" or "border-color".

```
.border, #border, table{ border:4px solid rgb(198, 149, 139) }
```

If only the border color should be changed use the property `border-color`.

```
.border{ border-color:rgb(198, 149, 139) }
```

If you want to add a box shadow in that color use:

Here you see how a box with a 4 pixel `rgb(198, 149, 139)` colored shadow looks like.

```
.boxshadow{ -moz-box-shadow:4px 4px 4px  
4px rgb(198, 149, 139); -webkit-box-  
shadow:4px 4px 4px 4px rgb(198, 149, 139);  
box-shadow:4px 4px 4px 4px rgb(198, 149,  
139) }
```

Background

The CSS property to change the background color of an element to CIELCh 66, 21.061, 36.206 is called "background". The background property can be set on classes, ids or directly on the HTML element.

```
.background, #background, body{  
background: rgb(198, 149, 139) }
```

If only the background color should be changed can be used:

```
.background{ background-color: rgb(198,  
149, 139) }
```

This example shows the color as background, it is applied via the CSS property "background".

To optimize and compress your CSS code, you can use our [online CSS compressor and optimizer](#) based on csstidy. If you want to create a linear or radial gradient as background or border, check our [CSS Gradient Generator](#).

Hey! You found this booklet interesting? Support Converting Colors with the new Membership Option!

The pro membership hides all ads, plus gives you double the colors in the color bucket, and more awesome pro features!

[Learn more, Memberships starting at \\$2.50/m!](#)

**Follow me
on Twitter!**

@ConvertingColor