

Converting Colors

CIELCh(66, 21.486, 32.518)

Have a look what the booklet for
CIELCh(66, 21.486, 32.518) contains.

CIELCh(66, 21.376, 31.614)	3
<i>Conversions</i>	4
<i>Details</i>	6
<i>Harmonies</i>	11
<i>Previews</i>	20
<i>Color Blindness Simulation</i>	23
<i>CSS Examples</i>	26

Color

CIELCh(66, 21.376, 31.614)

Conversions

Conversions Part 1

Format	Color
Hex	C7948D
RGB	199, 148, 141
RGB Percent	78%, 58%, 55%
CMY	0.2189, 0.4190, 0.4464
CMYK	0.00, 0.26, 0.29, 0.22
HSL	7°, 34%, 67%
HSV	7°, 29%, 78%
XYZ	39.0335, 35.3238, 30.0223
YIQ	162.4510, 32.6430, 8.6350

Conversions

Conversions Part 2

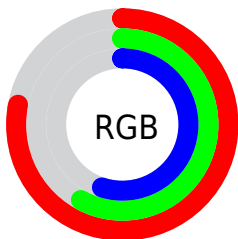
Format	Color
R _Y B	199, 149, 141
Decimal	13079693
CIE Lab	66.00, 18.20, 11.21
CIE LCh	66, 21.376, 31.614
Yxy	35.3238, 0.3740, 0.3384
Android (android.graphics.Color)	4291269773 (0xFFC7948D)
YUV	162.4510, -10.5753, 32.0535
Hunter-Lab	59.4338, 13.2218, 11.6540

Details

The CIELCh color **66, 21.376, 31.614** is a light color, and the websafe version is hex **CC9999**. A complement of this color would be **75, 17.401, 210.831**, and the grayscale version is **67, 0.008, 296.813**.

A 20% lighter version of the original color is **86, 20.715, 30.967**, and **46, 21.441, 31.412** is the 20% darker color. If you saturate the color by 10%, you get **61, 29.906, 32.310**, and if you desaturate by 10%, it is **71, 13.465, 31.143**.

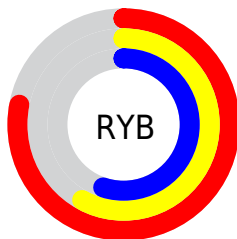
Distribution



Red (78%)

Green (58%)

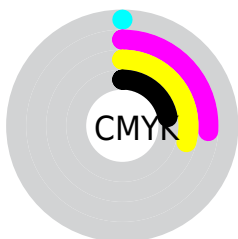
Blue (55%)



Red (78%)

Yellow (58%)

Blue (55%)

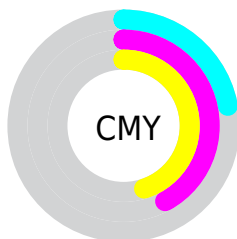


Cyan (0%)

Magenta (26%)

Yellow (29%)

Black (22%)



Cyan (22%)

Magenta (42%)

Yellow (45%)

Brightness & Saturation Gradients

These gradients show how the CIELCh color 66, 21.376, 31.614 changes by changing the brightness by 10 percent. The first figure shows a shift by +10% for each color and the second figure -10%.

Similar to the brightness gradients but the following saturation gradients show a change of the CIELCh color 66, 21.376, 31.614 by changing the saturation by 10% instead.

66, 21.376, 31.614

66, 21.376, 31.614

100, 21.376,
31.614

56, 21.376, 31.614

86, 21.376, 31.614

46, 21.376, 31.614

96, 21.376, 31.614

36, 21.376, 31.614

26, 21.376, 31.614

16, 21.376, 31.614

6, 21.376, 31.614

0, 21.376, 31.614

66, 21.376, 31.614

66, 21.376, 31.614

61, 29.906, 32.310

71, 13.465, 31.143

■ 57, 39.031, 33.274

■ 76, 6.164, 30.801

■ 53, 48.658, 34.569

■ 81, 0.567, 211.702

■ 49, 58.591, 36.219

■ 86, 6.781, 210.741

■ 46, 68.453, 38.146

■ 91, 12.530,
210.707

■ 44, 77.437, 40.004

■ 96, 17.768,
201.265

■ 43, 84.276, 41.295

■ 42, 84.843, 41.459

■ 96, 18.353,
198.292

Harmonies

Complementary

The Complementary color scheme is a pair of colors which are on the opposite of each other on the color wheel.



66, 21.376, 31.614



75, 17.401, 210.831

Rectangle

The Rectangle color scheme consists of four colors that form a rectangle on the color wheel.



66, 21.376, 31.614



66, 21.376, 81.614



66, 21.376, 211.614



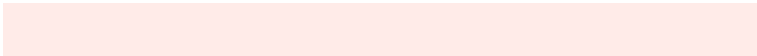
66, 21.376, 261.614

Sweetspot

The Sweet Spot groups the original color and five complimentary colors.



66, 21.374, 31.620



94, 7.429, 30.801



66, 35.177, 329.494



50, 5.194, 30.849



0, 0.000, 0.000



53, 0.007, 296.813

Same Dimension

The Same Dimension uses a secret algorithm to generate beautiful new colors.



66, 21.374, 31.620



79, 32.221, 32.032



73, 21.410, 83.129



39, 3.830, 30.809



35, 72.806, 41.604



4, 14.769, 26.164

Inverse Universe

The Inverse Universe completely reimagines the original color for something new.



75, 17.401, 210.831



92, 24.895, 210.990



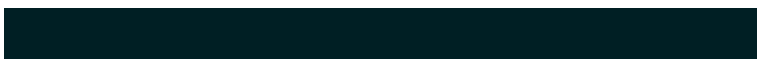
67, 20.865, 271.464



41, 3.606, 210.747



54, 31.556, 218.216



10, 11.615, 212.885

Previews

White Background



This preview shows how the CIELCh color 66, 21.376, 31.614 looks on a white background.

Color Contrast Check

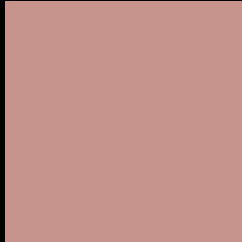
Large Text (above 18pt) WCAG AA × Fail

Any Text WCAG AA × Fail

Large Text (above 18pt) WCAG AAA × Fail

Any Text WCAG AAA × Fail

Black Background



This preview shows how the CIE LCh color 66, 21.376, 31.614 looks on a black background.

Color Contrast Check

Large Text (above 18pt) WCAG AA ✓ Pass

Any Text WCAG AA ✓ Pass

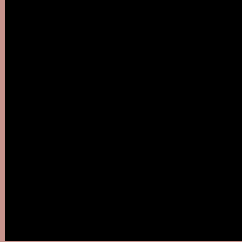
Large Text (above 18pt) WCAG AAA ✓ Pass

Any Text WCAG AAA ✓ Pass

If you want to check with other color combinations, try the [Color Contrast Checker](#).

CIELCh 66, 21.376, 31.614

Background



This preview shows how black text looks on a background with the CIELCh color 66, 21.376, 31.614.



This preview shows how white text looks on a background with the CIELCh color 66, 21.376, 31.614.

Color Blindness Simulation

Color vision deficiency is a very complex topic, and I could not describe the different causes any better than Wikipedia does, so if you want to learn more, you should check out their [article about color blindness](#).

Dichromacy



Original Color

66, 21.376, 31.614

Protanopia

66, 7.677, 88.265

Deuteranopia

66, 14.521, 54.738



Tritanopia
66, 22.498, 6.206

Trichromacy



Original Color
66, 21.376, 31.614

Protanomaly
66, 11.094, 53.072

Deuteranomaly
66, 16.875, 45.541

Tritanomaly
66, 21.343, 15.654

Monochromacy



Original Color
66, 21.376, 31.614

Achromatopsia
67, 0.008, 296.813

Achromatomaly
67, 7.245, 33.112

CSS Examples

Text

The CSS property to change the color of the text to CIELCh 66, 21.376, 31.614 is called "color". The color property can be set on classes, ids or directly on the HTML element.

This example shows how text in the color `rgb(199, 148, 141)` looks like.

```
.text, #text, p{  
    color:rgb(199, 148, 141)  
}
```

If you want to add a text shadow in that color use the text-shadow property, you can generate a text shadow directly with our [CSS Text Shadow Generator](#).

Here you see how black text with a 4 pixel rgb(199, 148, 141) colored shadow looks like.

```
.shadow{ text-shadow: 4px 4px 2px rgb(199, 148, 141) }
```

Border

The CSS property to change the border of an element to CIELCh 66, 21.376, 31.614 is called "border". The border property can be set on classes, ids or directly on the HTML element.

This example shows the color as border, it can be applied via the CSS property "border" or "border-color".

```
.border, #border, table{ border:4px solid rgb(199, 148, 141) }
```

If only the border color should be changed use the property `border-color`.

```
.border{ border-color:rgb(199, 148, 141) }
```

If you want to add a box shadow in that color use:

Here you see how a box with a 4 pixel `rgb(199, 148, 141)` colored shadow looks like.

```
.boxshadow{ -moz-box-shadow:4px 4px 4px  
4px rgb(199, 148, 141); -webkit-box-  
shadow:4px 4px 4px 4px rgb(199, 148, 141);  
box-shadow:4px 4px 4px 4px rgb(199, 148,  
141) }
```

Background

The CSS property to change the background color of an element to CIELCh 66, 21.376, 31.614 is called "background". The background property can be set on classes, ids or directly on the HTML element.

```
.background, #background, body{  
background: rgb(199, 148, 141) }
```

If only the background color should be changed can be used:

```
.background{ background-color: rgb(199,  
148, 141) }
```

This example shows the color as background, it is applied via the CSS property "background".

To optimize and compress your CSS code, you can use our [online CSS compressor and optimizer](#) based on csstidy. If you want to create a linear or radial gradient as background or border, check our [CSS Gradient Generator](#).

Hey! You found this booklet interesting? Support Converting Colors with the new Membership Option!

The pro membership hides all ads, plus gives you double the colors in the color bucket, and more awesome pro features!

[Learn more, Memberships starting at \\$2.50/m!](#)

**Follow me
on Twitter!**

@ConvertingColor