

Converting Colors

CIELCh(66, 22.639, 61.555)

Have a look what the booklet for
CIELCh(66, 22.639, 61.555) contains.

CIELCh(66, 22.851, 62.384)	3
<i>Conversions</i>	4
<i>Details</i>	6
<i>Harmonies</i>	11
<i>Previews</i>	20
<i>Color Blindness Simulation</i>	23
<i>CSS Examples</i>	26

Color

CIELCh(66, 22.851, 62.384)

Conversions

Conversions Part 1

Format	Color
Hex	C0997D
RGB	192, 153, 125
RGB Percent	75%, 60%, 49%
CMY	0.2483, 0.4011, 0.5109
CMYK	0.00, 0.20, 0.35, 0.25
HSL	25°, 35%, 62%
HSV	25°, 35%, 75%
XYZ	36.6841, 35.3238, 24.1904
YIQ	161.4690, 32.2320, -0.4400

Conversions

Conversions Part 2

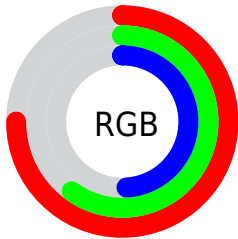
Format	Color
RYB	192, 173, 125
Decimal	12622205
CIELab	66.00, 10.59, 20.25
CIElCh	66, 22.851, 62.384
Yxy	35.3238, 0.3813, 0.3672
Android (android.graphics.Color)	4290812285 (0xFFC0997D)
YUV	161.4690, -17.9792, 26.7757
Hunter-Lab	59.4338, 6.1657, 17.4718

Details

The CIELCh color $66, 22.851, 62.384$ is a light color, and the websafe version is hex `CC9966`. A complement of this color would be $65, 19.684, 251.280$, and the grayscale version is $66, 0.008, 296.813$.

A 20% lighter version of the original color is $86, 22.603, 61.934$, and $46, 22.740, 62.418$ is the 20% darker color. If you saturate the color by 10%, you get $63, 30.311, 61.400$, and if you desaturate by 10%, it is $69, 15.815, 63.408$.

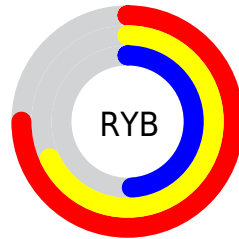
Distribution



Red (75%)

Green (60%)

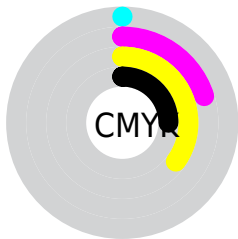
Blue (49%)



Red (75%)

Yellow (68%)

Blue (49%)

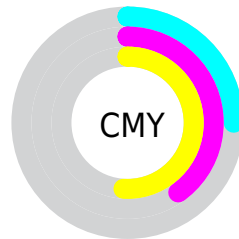


Cyan (0%)

Magenta (20%)

Yellow (35%)

Black (25%)



Cyan (25%)

Magenta (40%)

Yellow (51%)

Brightness & Saturation Gradients

These gradients show how the CIELCh color 66, 22.851, 62.384 changes by changing the brightness by 10 percent. The first figure shows a shift by +10% for each color and the second figure -10%.

Similar to the brightness gradients but the following saturation gradients show a change of the CIELCh color 66, 22.851, 62.384 by changing the saturation by 10% instead.

■ 66, 22.851, 62.384

■ 66, 22.851, 62.384

■ 100, 22.851,
62.384

■ 56, 22.851, 62.384

■ 86, 22.851, 62.384

■ 46, 22.851, 62.384

■ 96, 22.851, 62.384

■ 36, 22.851, 62.384

■ 26, 22.851, 62.384

■ 16, 22.851, 62.384

■ 6, 22.851, 62.384

■ 0, 22.851, 62.384

■ 66, 22.851, 62.384

■ 66, 22.851, 62.384

■ 63, 30.311, 61.400

■ 69, 15.815, 63.408

60, 38.172, 60.436

73, 9.190, 64.436

57, 46.340, 59.475

76, 2.947, 65.397

54, 54.573, 58.444

79, 2.950, 246.736

52, 62.347, 57.159

83, 8.540, 247.688

49, 68.714, 55.260

86, 13.856,
248.694

48, 71.574, 54.255

90, 17.554,
244.905

93, 17.456,
221.322

95, 19.977,
200.994

Harmonies

Complementary

The Complementary color scheme is a pair of colors which are on the opposite of each other on the color wheel.



66, 22.851, 62.384



65, 19.684, 251.280

Rectangle

The Rectangle color scheme consists of four colors that form a rectangle on the color wheel.



66, 22.851, 62.384



66, 22.851, 112.384



66, 22.851, 242.384



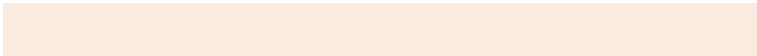
66, 22.851, 292.384

Sweetspot

The Sweet Spot groups the original color and five complimentary colors.



66, 22.851, 62.391



94, 7.522, 64.918



60, 33.318, 342.409



50, 5.153, 64.777



99, 0.012, 296.813



52, 0.007, 296.813

Same Dimension

The Same Dimension uses a secret algorithm to generate beautiful new colors.



66, 22.851, 62.391



81, 34.895, 61.621



75, 32.702, 102.964



39, 3.461, 64.996



41, 62.546, 54.784



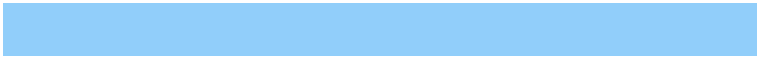
6, 11.506, 49.456

Inverse Universe

The Inverse Universe completely reimagines the original color for something new.



65, 19.684, 251.280



80, 28.929, 252.979



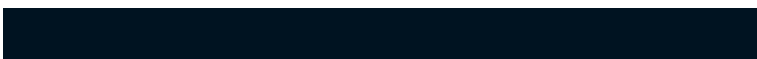
56, 35.122, 291.298



39, 3.345, 247.212



39, 42.876, 274.188



5, 11.738, 261.401

Previews

White Background



This preview shows how the CIELCh color 66, 22.851, 62.384 looks on a white background.

Color Contrast Check

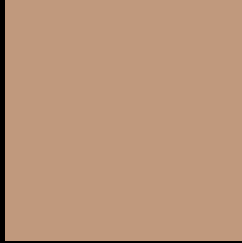
Large Text (above 18pt) WCAG AA × Fail

Any Text WCAG AA × Fail

Large Text (above 18pt) WCAG AAA × Fail

Any Text WCAG AAA × Fail

Black Background



This preview shows how the CIELCh color 66, 22.851, 62.384 looks on a black background.

Color Contrast Check

Large Text (above 18pt) WCAG AA ✓ Pass

Any Text WCAG AA ✓ Pass

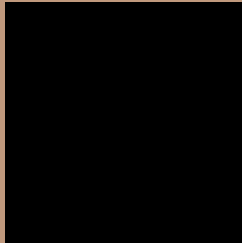
Large Text (above 18pt) WCAG AAA ✓ Pass

Any Text WCAG AAA ✓ Pass

If you want to check with other color combinations, try the [Color Contrast Checker](#).

CIELCh 66, 22.851, 62.384

Background



This preview shows how black text looks on a background with the CIELCh color 66, 22.851, 62.384.



This preview shows how white text looks on a background with the CIELCh color 66, 22.851, 62.384.

Color Blindness Simulation

Color vision deficiency is a very complex topic, and I could not describe the different causes any better than Wikipedia does, so if you want to learn more, you should check out their [article about color blindness](#).

Dichromacy



Original Color

66, 22.851, 62.384

Protanopia

66, 18.196, 93.827

Deuteranopia

66, 22.131, 67.945



Tritanopia
66, 19.377, 3.225

Trichromacy



Original Color
66, 22.851, 62.384

Protanomaly
66, 19.003, 79.517

Deuteranomaly
66, 22.423, 67.137

Tritanomaly
66, 17.887, 26.314

Monochromacy



Original Color
66, 22.851, 62.384

Achromatopsia
66, 0.008, 296.813

Achromatomaly
66, 7.830, 64.392

CSS Examples

Text

The CSS property to change the color of the text to CIELCh 66, 22.851, 62.384 is called "color". The color property can be set on classes, ids or directly on the HTML element.

This example shows how text in the color `rgb(192, 153, 125)` looks like.

```
.text, #text, p{  
    color:rgb(192, 153, 125)  
}
```

If you want to add a text shadow in that color use the text-shadow property, you can generate a text shadow directly with our [CSS Text Shadow Generator](#).

Here you see how black text with a 4 pixel rgb(192, 153, 125) colored shadow looks like.

```
.shadow{ text-shadow: 4px 4px 2px rgb(192, 153, 125) }
```

Border

The CSS property to change the border of an element to CIELCh 66, 22.851, 62.384 is called "border". The border property can be set on classes, ids or directly on the HTML element.

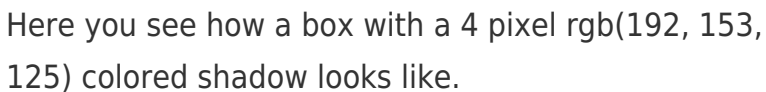
This example shows the color as border, it can be applied via the CSS property "border" or "border-color".

```
.border, #border, table{ border:4px solid rgb(192, 153, 125) }
```

If only the border color should be changed use the property `border-color`.

```
.border{ border-color:rgb(192, 153, 125) }
```

If you want to add a box shadow in that color use:



Here you see how a box with a 4 pixel `rgb(192, 153, 125)` colored shadow looks like.

```
.boxshadow{ -moz-box-shadow:4px 4px 4px 4px rgb(192, 153, 125); -webkit-box-shadow:4px 4px 4px 4px rgb(192, 153, 125); box-shadow:4px 4px 4px 4px rgb(192, 153, 125) }
```

Background

The CSS property to change the background color of an element to CIELCh 66, 22.851, 62.384 is called "background". The background property can be set on classes, ids or directly on the HTML element.

```
.background, #background, body{  
background: rgb(192, 153, 125) }
```

If only the background color should be changed can be used:

```
.background{ background-color: rgb(192,  
153, 125) }
```

This example shows the color as background, it is applied via the CSS property "background".

To optimize and compress your CSS code, you can use our [online CSS compressor and optimizer](#) based on csstidy. If you want to create a linear or radial gradient as background or border, check our [CSS Gradient Generator](#).

Hey! You found this booklet interesting? Support Converting Colors with the new Membership Option!

The pro membership hides all ads, plus gives you double the colors in the color bucket, and more awesome pro features!

[Learn more, Memberships starting at \\$2.50/m!](#)

**Follow me
on Twitter!**

@ConvertingColor