

Converting Colors

CIELCh(66, 23.547, 56.577)

Have a look what the booklet for
CIELCh(66, 23.547, 56.577) contains.

| | |
|--|----|
| CIELCh(66, 23.448, 56.278) | 3 |
| <i>Conversions</i> | 4 |
| <i>Details</i> | 6 |
| <i>Harmonies</i> | 11 |
| <i>Previews</i> | 20 |
| <i>Color Blindness Simulation</i> | 23 |
| <i>CSS Examples</i> | 26 |

Color

CIELCh(66, 23.448, 56.278)

Conversions

Conversions Part 1

| Format | Color |
|---------------|---------------------------|
| Hex | C3977E |
| RGB | 195, 151, 126 |
| RGB Percent | 76%, 59%, 49% |
| CMY | 0.2346, 0.4072, 0.5052 |
| CMYK | 0.00, 0.23, 0.35, 0.23 |
| HSL | 22°, 37%, 63% |
| HSV | 22°, 35%, 77% |
| XYZ | 37.4221, 35.3238, 24.6395 |
| YIQ | 161.3060, 34.2490, 1.5530 |

Conversions

Conversions Part 2

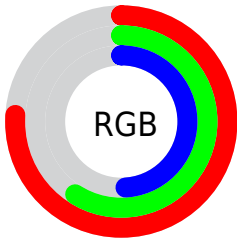
| Format | Color |
|-------------------------------------|---|
| RYB | 195, 165, 126 |
| Decimal | 12818302 |
| CIELab | 66.00, 13.02, 19.50 |
| CIELCh | 66, 23.448, 56.278 |
| Yxy | 35.3238, 0.3843, 0.3627 |
| Android (android.graphics.Color) | 4291008382 (0xFFC3977E) |
| YUV | 161.3060, -17.4059, 29.5496 |
| Hunter-Lab | 59.4338, 8.3822, 17.0238 |

Details

The CIELCh color **66, 23.448, 56.278** is a light color, and the websafe version is hex **CC9999**. A complement of this color would be **67, 19.483, 243.992**, and the grayscale version is **66, 0.008, 296.813**.

A 20% lighter version of the original color is **86, 23.482, 55.491**, and **46, 23.438, 55.952** is the 20% darker color. If you saturate the color by 10%, you get **63, 31.156, 55.562**, and if you desaturate by 10%, it is **70, 16.235, 57.067**.

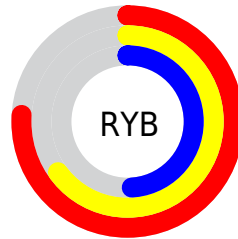
Distribution



Red (76%)

Green (59%)

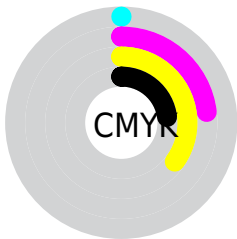
Blue (49%)



Red (76%)

Yellow (65%)

Blue (49%)

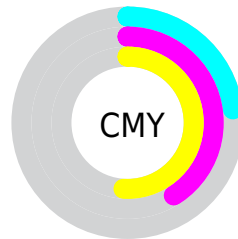


Cyan (0%)

Magenta (23%)

Yellow (35%)

Black (23%)



Cyan (23%)

Magenta (41%)

Yellow (51%)

Brightness & Saturation Gradients

These gradients show how the CIELCh color 66, 23.448, 56.278 changes by changing the brightness by 10 percent. The first figure shows a shift by +10% for each color and the second figure -10%.

Similar to the brightness gradients but the following saturation gradients show a change of the CIELCh color 66, 23.448, 56.278 by changing the saturation by 10% instead.

■ 66, 23.448, 56.278

■ 66, 23.448, 56.278

■ 100, 23.448,
56.278

■ 56, 23.448, 56.278

■ 86, 23.448, 56.278

■ 46, 23.448, 56.278

■ 96, 23.448, 56.278

■ 36, 23.448, 56.278

■ 26, 23.448, 56.278

■ 16, 23.448, 56.278

■ 6, 23.448, 56.278

■ 0, 23.448, 56.278

■ 66, 23.448, 56.278

■ 66, 23.448, 56.278

■ 63, 31.156, 55.562

■ 70, 16.235, 57.067

59, 39.344, 54.907

73, 9.500, 57.890

56, 47.925, 54.300

77, 3.203, 58.672

53, 56.658, 53.667

81, 2.696, 239.885

51, 65.003, 52.811

84, 8.241, 240.676

48, 71.927, 51.324

88, 13.475,
241.556

47, 74.819, 50.632

92, 16.265,
230.948

95, 18.222,
205.261

96, 19.560,
198.215

Harmonies

Complementary

The Complementary color scheme is a pair of colors which are on the opposite of each other on the color wheel.



66, 23.448, 56.278



67, 19.483, 243.992

Rectangle

The Rectangle color scheme consists of four colors that form a rectangle on the color wheel.



66, 23.448, 56.278



66, 23.448, 106.278



66, 23.448, 236.278



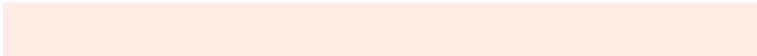
66, 23.448, 286.278

Sweetspot

The Sweet Spot groups the original color and five complimentary colors.



66, 23.447, 56.285



95, 8.332, 58.235



61, 35.727, 339.153



50, 5.625, 58.122



0, 0.000, 0.000



53, 0.007, 296.813

Same Dimension

The Same Dimension uses a secret algorithm to generate beautiful new colors.



66, 23.447, 56.285



81, 35.504, 55.750



75, 31.548, 99.310



39, 3.415, 58.380



39, 64.440, 51.175



5, 11.647, 44.224

Inverse Universe

The Inverse Universe completely reimagines the original color for something new.



67, 19.483, 243.992



83, 28.204, 245.468



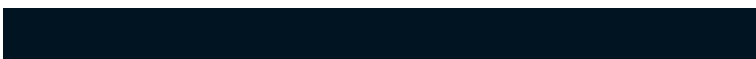
58, 33.395, 288.259



39, 3.275, 240.302



41, 38.436, 266.215



6, 11.102, 254.498

Previews

White Background



This preview shows how the CIELCh color 66, 23.448, 56.278 looks on a white background.

Color Contrast Check

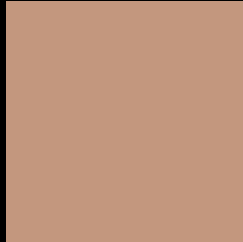
Large Text (above 18pt) WCAG AA × Fail

Any Text WCAG AA × Fail

Large Text (above 18pt) WCAG AAA × Fail

Any Text WCAG AAA × Fail

Black Background



This preview shows how the CIELCh color 66, 23.448, 56.278 looks on a black background.

Color Contrast Check

Large Text (above 18pt) WCAG AA ✓ Pass

Any Text WCAG AA ✓ Pass

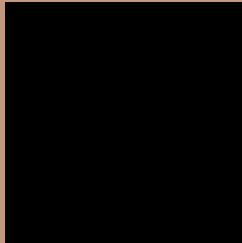
Large Text (above 18pt) WCAG AAA ✓ Pass

Any Text WCAG AAA ✓ Pass

If you want to check with other color combinations, try the [Color Contrast Checker](#).

CIELCh 66, 23.448, 56.278

Background



This preview shows how black text looks on a background with the CIELCh color 66, 23.448, 56.278.



This preview shows how white text looks on a background with the CIELCh color 66, 23.448, 56.278.

Color Blindness Simulation

Color vision deficiency is a very complex topic, and I could not describe the different causes any better than Wikipedia does, so if you want to learn more, you should check out their [article about color blindness](#).

Dichromacy



Original Color

66, 23.448, 56.278

Protanopia

66, 17.026, 94.432

Deuteranopia

66, 21.262, 66.238



Tritanopia
66, 20.928, 4.808

Trichromacy



Original Color
66, 23.448, 56.278

Protanomaly
66, 18.027, 78.043

Deuteranomaly
66, 22.122, 62.197

Tritanomaly
66, 19.572, 26.029

Monochromacy



Original Color
66, 23.448, 56.278

Achromatopsia
66, 0.008, 296.813

Achromatomaly
66, 8.071, 57.696

CSS Examples

Text

The CSS property to change the color of the text to CIELCh 66, 23.448, 56.278 is called "color". The color property can be set on classes, ids or directly on the HTML element.

This example shows how text in the color `rgb(195, 151, 126)` looks like.

```
.text, #text, p{  
    color:rgb(195, 151, 126)  
}
```

If you want to add a text shadow in that color use the text-shadow property, you can generate a text shadow directly with our [CSS Text Shadow Generator](#).

Here you see how black text with a 4 pixel rgb(195, 151, 126) colored shadow looks like.

```
.shadow{ text-shadow: 4px 4px 2px rgb(195, 151, 126) }
```

Border

The CSS property to change the border of an element to CIELCh 66, 23.448, 56.278 is called "border". The border property can be set on classes, ids or directly on the HTML element.

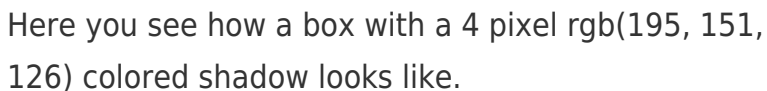
This example shows the color as border, it can be applied via the CSS property "border" or "border-color".

```
.border, #border, table{ border:4px solid rgb(195, 151, 126) }
```

If only the border color should be changed use the property `border-color`.

```
.border{ border-color:rgb(195, 151, 126) }
```

If you want to add a box shadow in that color use:



Here you see how a box with a 4 pixel `rgb(195, 151, 126)` colored shadow looks like.

```
.boxshadow{ -moz-box-shadow:4px 4px 4px 4px rgb(195, 151, 126); -webkit-box-shadow:4px 4px 4px 4px rgb(195, 151, 126); box-shadow:4px 4px 4px 4px rgb(195, 151, 126) }
```

Background

The CSS property to change the background color of an element to CIELCh 66, 23.448, 56.278 is called "background". The background property can be set on classes, ids or directly on the HTML element.

```
.background, #background, body{  
background: rgb(195, 151, 126) }
```

If only the background color should be changed can be used:

```
.background{ background-color: rgb(195,  
151, 126) }
```

This example shows the color as background, it is applied via the CSS property "background".

To optimize and compress your CSS code, you can use our [online CSS compressor and optimizer](#) based on csstidy. If you want to create a linear or radial gradient as background or border, check our [CSS Gradient Generator](#).

Hey! You found this booklet interesting? Support Converting Colors with the new Membership Option!

The pro membership hides all ads, plus gives you double the colors in the color bucket, and more awesome pro features!

[Learn more, Memberships starting at \\$2.50/m!](#)

**Follow me
on Twitter!**

@ConvertingColor