

Converting Colors

CIELCh(66, 24.617, 70.862)

Have a look what the booklet for
CIELCh(66, 24.617, 70.862) contains.

CIELCh(66, 24.652, 70.839)	3
<i>Conversions</i>	4
<i>Details</i>	6
<i>Harmonies</i>	11
<i>Previews</i>	20
<i>Color Blindness Simulation</i>	23
<i>CSS Examples</i>	26

Color

CIELCh(66, 24.652, 70.839)

Conversions

Conversions Part 1

Format	Color
Hex	BD9A77
RGB	189, 154, 119
RGB Percent	74%, 60%, 47%
CMY	0.2583, 0.3956, 0.5329
CMYK	0.00, 0.19, 0.37, 0.26
HSL	30°, 35%, 60%
HSV	30°, 37%, 74%
XYZ	35.9332, 35.3238, 22.4152
YIQ	160.4750, 32.0950, -3.4650

Conversions

Conversions Part 2

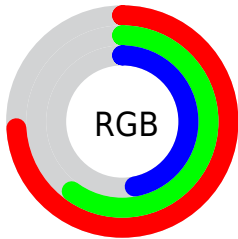
Format	Color
R _Y B	189, 189, 119
Decimal	12425847
CIE Lab	66.00, 8.09, 23.29
CIE LCh	66, 24.652, 70.839
Yxy	35.3238, 0.3836, 0.3771
Android (android.graphics.Color)	4290615927 (0xFFBD9A77)
YUV	160.4750, -20.4472, 25.0164
Hunter-Lab	59.4338, 3.9105, 19.2427

Details

The CIELCh color **66, 24.652, 70.839** is a light color, and the websafe version is hex **CC9966**. A complement of this color would be **62, 22.219, 261.566**, and the grayscale version is **66, 0.008, 296.813**.

A 20% lighter version of the original color is **86, 24.706, 70.901**, and **46, 24.665, 71.213** is the 20% darker color. If you saturate the color by 10%, you get **63, 32.038, 69.585**, and if you desaturate by 10%, it is **69, 17.573, 72.093**.

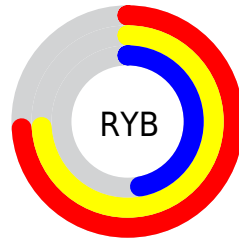
Distribution



Red (74%)

Green (60%)

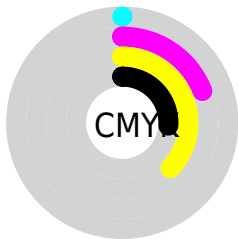
Blue (47%)



Red (74%)

Yellow (74%)

Blue (47%)

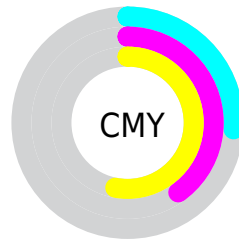


Cyan (0%)

Magenta (19%)

Yellow (37%)

Black (26%)



Cyan (26%)

Magenta (40%)

Yellow (53%)

Brightness & Saturation Gradients

These gradients show how the CIELCh color 66, 24.652, 70.839 changes by changing the brightness by 10 percent. The first figure shows a shift by +10% for each color and the second figure -10%.

Similar to the brightness gradients but the following saturation gradients show a change of the CIELCh color 66, 24.652, 70.839 by changing the saturation by 10% instead.

■ 66, 24.652, 70.839

■ 66, 24.652, 70.839

■ 100, 24.652,
70.839

■ 56, 24.652, 70.839

■ 86, 24.652, 70.839

■ 46, 24.652, 70.839

■ 96, 24.652, 70.839

■ 36, 24.652, 70.839

■ 26, 24.652, 70.839

■ 16, 24.652, 70.839

■ 6, 24.652, 70.839

■ 0, 24.652, 70.839

■ 66, 24.652, 70.839

■ 66, 24.652, 70.839

■ 63, 32.038, 69.585

■ 69, 17.573, 72.093

61, 39.675, 68.303

72, 10.811, 73.323

58, 47.415, 66.964

75, 4.354, 74.499

56, 54.939, 65.481

78, 1.821, 255.973

53, 61.637, 63.661

81, 7.741, 256.993

51, 66.682, 61.227

84, 13.433,
258.105

51, 68.113, 60.528

87, 18.923,
259.187

89, 18.231,
245.155

92, 17.892,
225.801

Harmonies

Complementary

The Complementary color scheme is a pair of colors which are on the opposite of each other on the color wheel.



66, 24.652, 70.839



62, 22.219, 261.566

Rectangle

The Rectangle color scheme consists of four colors that form a rectangle on the color wheel.



66, 24.652, 70.839



66, 24.652, 120.839



66, 24.652, 250.839



66, 24.652, 300.839

Sweetspot

The Sweet Spot groups the original color and five complimentary colors.



66, 24.652, 70.845



92, 8.501, 74.023



58, 33.181, 347.227



49, 5.728, 73.863



98, 0.011, 296.813



51, 0.007, 296.813

Same Dimension

The Same Dimension uses a secret algorithm to generate beautiful new colors.



66, 24.652, 70.845



81, 36.780, 69.878



75, 36.953, 106.642



38, 3.530, 74.236



43, 59.492, 61.081



6, 10.072, 59.626

Inverse Universe

The Inverse Universe completely reimagines the original color for something new.



62, 22.219, 261.566



76, 32.364, 263.403



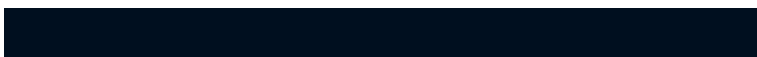
53, 40.559, 294.976



38, 3.455, 256.689



34, 49.936, 283.490



4, 11.553, 268.438

Previews

White Background



This preview shows how the CIELCh color 66, 24.652, 70.839 looks on a white background.

Color Contrast Check

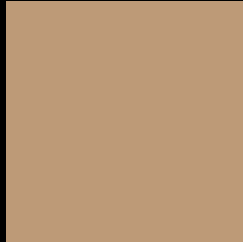
Large Text (above 18pt) WCAG AA × Fail

Any Text WCAG AA × Fail

Large Text (above 18pt) WCAG AAA × Fail

Any Text WCAG AAA × Fail

Black Background



This preview shows how the CIELCh color 66, 24.652, 70.839 looks on a black background.

Color Contrast Check

Large Text (above 18pt) WCAG AA ✓ Pass

Any Text WCAG AA ✓ Pass

Large Text (above 18pt) WCAG AAA ✓ Pass

Any Text WCAG AAA ✓ Pass

If you want to check with other color combinations, try the [Color Contrast Checker](#).

CIELCh 66, 24.652, 70.839

Background



This preview shows how black text looks on a background with the CIELCh color 66, 24.652, 70.839.



This preview shows how white text looks on a background with the CIELCh color 66, 24.652, 70.839.

Color Blindness Simulation

Color vision deficiency is a very complex topic, and I could not describe the different causes any better than Wikipedia does, so if you want to learn more, you should check out their [article about color blindness](#).

Dichromacy



Original Color

66, 24.652, 70.839

Protanopia

66, 21.493, 94.434

Deuteranopia

66, 24.930, 70.072



Tritanopia
66, 18.221, 1.885

Trichromacy



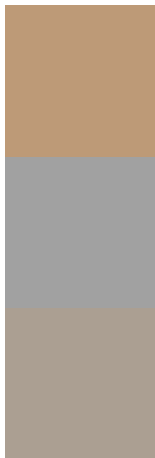
Original Color
66, 24.652, 70.839

Protanomaly
66, 22.114, 85.584

Deuteranomaly
66, 24.930, 70.072

Tritanomaly
66, 17.008, 32.016

Monochromacy



Original Color
66, 24.652, 70.839

Achromatopsia
66, 0.008, 296.813

Achromatomaly
66, 8.616, 75.728

CSS Examples

Text

The CSS property to change the color of the text to CIELCh 66, 24.652, 70.839 is called "color". The color property can be set on classes, ids or directly on the HTML element.

This example shows how text in the color `rgb(189, 154, 119)` looks like.

```
.text, #text, p{  
    color:rgb(189, 154, 119)  
}
```

If you want to add a text shadow in that color use the text-shadow property, you can generate a text shadow directly with our [CSS Text Shadow Generator](#).

Here you see how black text with a 4 pixel rgb(189, 154, 119) colored shadow looks like.

```
.shadow{ text-shadow: 4px 4px 2px rgb(189, 154, 119) }
```

Border

The CSS property to change the border of an element to CIELCh 66, 24.652, 70.839 is called "border". The border property can be set on classes, ids or directly on the HTML element.

This example shows the color as border, it can be applied via the CSS property "border" or "border-color".

```
.border, #border, table{ border:4px solid rgb(189, 154, 119) }
```

If only the border color should be changed use the property `border-color`.

```
.border{ border-color:rgb(189, 154, 119) }
```

If you want to add a box shadow in that color use:

Here you see how a box with a 4 pixel `rgb(189, 154, 119)` colored shadow looks like.

```
.boxshadow{ -moz-box-shadow:4px 4px 4px  
4px rgb(189, 154, 119); -webkit-box-  
shadow:4px 4px 4px 4px rgb(189, 154, 119);  
box-shadow:4px 4px 4px 4px rgb(189, 154,  
119) }
```

Background

The CSS property to change the background color of an element to CIELCh 66, 24.652, 70.839 is called "background". The background property can be set on classes, ids or directly on the HTML element.

```
.background, #background, body{  
background: rgb(189, 154, 119) }
```

If only the background color should be changed can be used:

```
.background{ background-color: rgb(189,  
154, 119) }
```

This example shows the color as background, it is applied via the CSS property "background".

To optimize and compress your CSS code, you can use our [online CSS compressor and optimizer](#) based on csstidy. If you want to create a linear or radial gradient as background or border, check our [CSS Gradient Generator](#).

Hey! You found this booklet interesting? Support Converting Colors with the new Membership Option!

The pro membership hides all ads, plus gives you double the colors in the color bucket, and more awesome pro features!

[Learn more, Memberships starting at \\$2.50/m!](#)

**Follow me
on Twitter!**

@ConvertingColor