

Converting Colors

CIELCh(66, 26.200, 48.618)

Have a look what the booklet for
CIELCh(66, 26.200, 48.618) contains.

CIELCh(66, 26.263, 48.349)	3
<i>Conversions</i>	4
<i>Details</i>	6
<i>Harmonies</i>	11
<i>Previews</i>	20
<i>Color Blindness Simulation</i>	23
<i>CSS Examples</i>	26

Color

CIELCh(66, 26.263, 48.349)

Conversions

Conversions Part 1

Format	Color
Hex	CA947E
RGB	202, 148, 126
RGB Percent	79%, 58%, 49%
CMY	0.2071, 0.4189, 0.5053
CMYK	0.00, 0.27, 0.38, 0.21
HSL	17°, 42%, 64%
HSV	17°, 38%, 79%
XYZ	38.7978, 35.3238, 24.5660
YIQ	161.6380, 39.2460, 4.6060

Conversions

Conversions Part 2

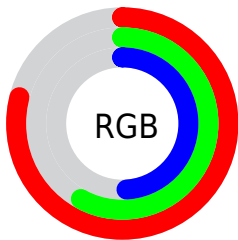
Format	Color
R _Y B	202, 157, 126
Decimal	13276286
CIE Lab	66.00, 17.45, 19.62
CIE LCh	66, 26.263, 48.349
Yxy	35.3238, 0.3931, 0.3579
Android (android.graphics.Color)	4291466366 (0xFFCA947E)
YUV	161.6380, -17.5695, 35.3975
Hunter-Lab	59.4338, 12.5138, 17.0971

Details

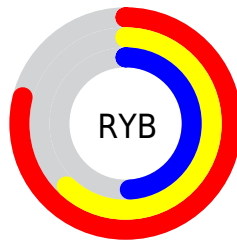
The CIELCh color **66, 26.263, 48.349** is a light color, and the websafe version is hex **CC9999**. A complement of this color would be **70, 20.681, 234.164**, and the grayscale version is **67, 0.008, 296.813**.

A 20% lighter version of the original color is **85, 24.321, 50.056**, and **46, 26.172, 48.158** is the 20% darker color. If you saturate the color by 10%, you get **62, 34.574, 48.095**, and if you desaturate by 10%, it is **70, 18.532, 48.732**.

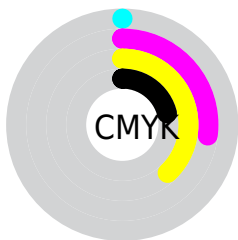
Distribution



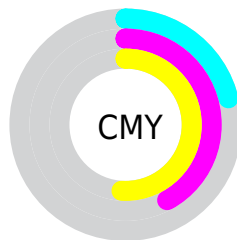
- Red (79%)
- Green (58%)
- Blue (49%)



- Red (79%)
- Yellow (62%)
- Blue (49%)



- Cyan (0%)
- Magenta (27%)
- Yellow (38%)
- Black (21%)



- Cyan (21%)
- Magenta (42%)
- Yellow (51%)

Brightness & Saturation Gradients

These gradients show how the CIELCh color 66, 26.263, 48.349 changes by changing the brightness by 10 percent. The first figure shows a shift by +10% for each color and the second figure -10%.

Similar to the brightness gradients but the following saturation gradients show a change of the CIELCh color 66, 26.263, 48.349 by changing the saturation by 10% instead.

 66, 26.263, 48.349

 66, 26.263, 48.349

 100, 26.263,
48.349

 56, 26.263, 48.349

 86, 26.263, 48.349

 46, 26.263, 48.349

 96, 26.263, 48.349

 36, 26.263, 48.349

 26, 26.263, 48.349

 16, 26.263, 48.349

 6, 26.263, 48.349

 0, 26.263, 48.349

 66, 26.263, 48.349

 66, 26.263, 48.349

 62, 34.574, 48.095

 70, 18.532, 48.732

59, 43.440, 47.966

74, 11.365, 49.198

55, 52.749, 47.951

78, 4.723, 49.693

52, 62.205, 47.963

82, 1.443, 230.772

49, 71.132, 47.747

87, 7.185, 231.136

47, 78.358, 46.869

91, 12.552,
231.777

47, 80.004, 46.735

95, 15.593,
210.509

97, 17.433,
198.350

Harmonies

Complementary

The Complementary color scheme is a pair of colors which are on the opposite of each other on the color wheel.



66, 26.263, 48.349



70, 20.681, 234.164

Rectangle

The Rectangle color scheme consists of four colors that form a rectangle on the color wheel.



66, 26.263, 48.349



66, 26.263, 98.349



66, 26.263, 228.349



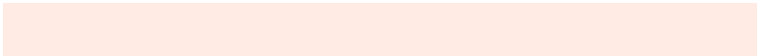
66, 26.263, 278.349

Sweetspot

The Sweet Spot groups the original color and five complimentary colors.



66, 26.262, 48.355



94, 8.366, 49.523



62, 40.812, 336.344



50, 5.651, 49.454



0, 0.000, 0.000



53, 0.007, 296.813

Same Dimension

The Same Dimension uses a secret algorithm to generate beautiful new colors.



66, 26.262, 48.355



78, 39.158, 48.137



76, 32.453, 94.898



41, 3.576, 49.609



38, 68.660, 47.200



6, 15.341, 36.524

Inverse Universe

The Inverse Universe completely reimagines the original color for something new.



70, 20.681, 234.164



84, 29.011, 235.553



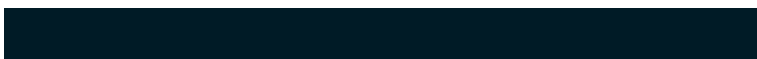
60, 33.815, 285.098



41, 3.397, 231.012



47, 34.783, 253.691



8, 12.004, 242.214

Previews

White Background



This preview shows how the CIELCh color 66, 26.263, 48.349 looks on a white background.

Color Contrast Check

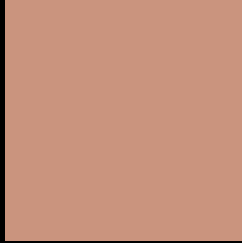
Large Text (above 18pt) WCAG AA × Fail

Any Text WCAG AA × Fail

Large Text (above 18pt) WCAG AAA × Fail

Any Text WCAG AAA × Fail

Black Background



This preview shows how the CIE LCh color 66, 26.263, 48.349 looks on a black background.

Color Contrast Check

Large Text (above 18pt) WCAG AA ✓ Pass

Any Text WCAG AA ✓ Pass

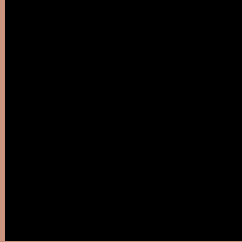
Large Text (above 18pt) WCAG AAA ✓ Pass

Any Text WCAG AAA ✓ Pass

If you want to check with other color combinations, try the [Color Contrast Checker](#).

CIELCh 66, 26.263, 48.349

Background



This preview shows how black text looks on a background with the CIELCh color 66, 26.263, 48.349.



This preview shows how white text looks on a background with the CIELCh color 66, 26.263, 48.349.

Color Blindness Simulation

Color vision deficiency is a very complex topic, and I could not describe the different causes any better than Wikipedia does, so if you want to learn more, you should check out their [article about color blindness](#).

Dichromacy



Original Color

66, 26.263, 48.349

Protanopia

66, 15.959, 93.656

Deuteranopia

66, 21.694, 67.110



Tritanopia
66, 24.897, 8.035

Trichromacy



Original Color
66, 26.263, 48.349

Protanomaly
66, 18.074, 71.906

Deuteranomaly
66, 23.142, 60.081

Tritanomaly
66, 23.653, 23.023

Monochromacy



Original Color
66, 26.263, 48.349

Achromatopsia
67, 0.008, 296.813

Achromatomaly
66, 9.108, 48.850

CSS Examples

Text

The CSS property to change the color of the text to CIELCh 66, 26.263, 48.349 is called "color". The color property can be set on classes, ids or directly on the HTML element.

This example shows how text in the color `rgb(202, 148, 126)` looks like.

```
.text, #text, p{  
    color:rgb(202, 148, 126)  
}
```

If you want to add a text shadow in that color use the text-shadow property, you can generate a text shadow directly with our [CSS Text Shadow Generator](#).

Here you see how black text with a 4 pixel rgb(202, 148, 126) colored shadow looks like.

```
.shadow{ text-shadow: 4px 4px 2px rgb(202, 148, 126) }
```

Border

The CSS property to change the border of an element to CIELCh 66, 26.263, 48.349 is called "border". The border property can be set on classes, ids or directly on the HTML element.

This example shows the color as border, it can be applied via the CSS property "border" or "border-color".

```
.border, #border, table{ border:4px solid rgb(202, 148, 126) }
```

If only the border color should be changed use the property `border-color`.

```
.border{ border-color:rgb(202, 148, 126) }
```

If you want to add a box shadow in that color use:

Here you see how a box with a 4 pixel `rgb(202, 148, 126)` colored shadow looks like.

```
.boxshadow{ -moz-box-shadow:4px 4px 4px  
4px rgb(202, 148, 126); -webkit-box-  
shadow:4px 4px 4px 4px rgb(202, 148, 126);  
box-shadow:4px 4px 4px 4px rgb(202, 148,  
126) }
```

Background

The CSS property to change the background color of an element to CIELCh 66, 26.263, 48.349 is called "background". The background property can be set on classes, ids or directly on the HTML element.

```
.background, #background, body{  
background: rgb(202, 148, 126) }
```

If only the background color should be changed can be used:

```
.background{ background-color: rgb(202,  
148, 126) }
```

This example shows the color as background, it is applied via the CSS property "background".

To optimize and compress your CSS code, you can use our [online CSS compressor and optimizer](#) based on csstidy. If you want to create a linear or radial gradient as background or border, check our [CSS Gradient Generator](#).

Hey! You found this booklet interesting? Support Converting Colors with the new Membership Option!

The pro membership hides all ads, plus gives you double the colors in the color bucket, and more awesome pro features!

[Learn more, Memberships starting at \\$2.50/m!](#)

**Follow me
on Twitter!**

@ConvertingColor