

Converting Colors

CIELCh(66, 26.624, 20.824)

Have a look what the booklet for
CIELCh(66, 26.624, 20.824) contains.

CIELCh(66, 26.897, 19.804)	3
<i>Conversions</i>	4
<i>Details</i>	6
<i>Harmonies</i>	11
<i>Previews</i>	20
<i>Color Blindness Simulation</i>	23
<i>CSS Examples</i>	26

Color

CIELCh(66, 26.897, 19.804)

Conversions

Conversions Part 1

Format	Color
Hex	D18F91
RGB	209, 143, 145
RGB Percent	82%, 56%, 57%
CMY	0.1797, 0.4386, 0.4307
CMYK	0.00, 0.32, 0.31, 0.18
HSL	358°, 42%, 69%
HSV	358°, 32%, 82%
XYZ	41.3144, 35.3238, 31.4934
YIQ	162.9620, 38.6940, 14.6140

Conversions

Conversions Part 2

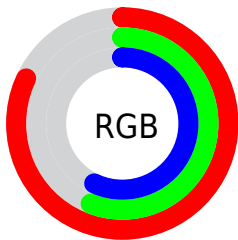
Format	Color
R _Y B	209, 143, 145
Decimal	13733777
CIE Lab	66.00, 25.31, 9.11
CIE LCh	66, 26.897, 19.804
Yxy	35.3238, 0.3821, 0.3267
Android (android.graphics.Color)	4291923857 (0xFFD18F91)
YUV	162.9620, -8.8553, 40.3753
Hunter-Lab	59.4338, 20.0721, 10.1865

Details

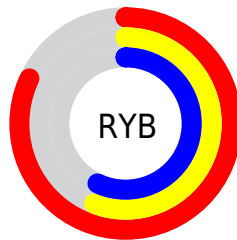
The CIELCh color **66, 26.897, 19.804** is a light color, and the websafe version is hex **CC9999**. A complement of this color would be **80, 21.923, 195.036**, and the grayscale version is **67, 0.008, 296.813**.

A 20% lighter version of the original color is **85, 22.081, 18.442**, and **46, 26.895, 19.477** is the 20% darker color. If you saturate the color by 10%, you get **61, 36.579, 21.332**, and if you desaturate by 10%, it is **71, 17.731, 18.620**.

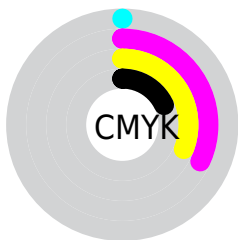
Distribution



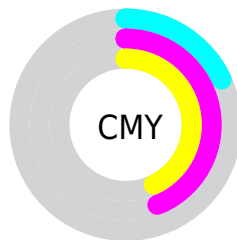
- Red (82%)
- Green (56%)
- Blue (57%)



- Red (82%)
- Yellow (56%)
- Blue (57%)



- Cyan (0%)
- Magenta (32%)
- Yellow (31%)
- Black (18%)



- Cyan (18%)
- Magenta (44%)
- Yellow (43%)

Brightness & Saturation Gradients

These gradients show how the CIELCh color 66, 26.897, 19.804 changes by changing the brightness by 10 percent. The first figure shows a shift by +10% for each color and the second figure -10%.

Similar to the brightness gradients but the following saturation gradients show a change of the CIELCh color 66, 26.897, 19.804 by changing the saturation by 10% instead.

66, 26.897, 19.804

66, 26.897, 19.804

100, 26.897,
19.804

56, 26.897, 19.804

86, 26.897, 19.804

46, 26.897, 19.804

96, 26.897, 19.804

36, 26.897, 19.804

26, 26.897, 19.804

16, 26.897, 19.804

6, 26.897, 19.804

0, 26.897, 19.804

66, 26.897, 19.804

66, 26.897, 19.804

61, 36.579, 21.332

71, 17.731, 18.620

■ 56, 46.629, 23.301

■ 77, 9.160, 17.667

■ 52, 56.795, 25.831

■ 83, 1.190, 16.521

■ 48, 66.743, 29.002

■ 89, 6.204, 196.500

■ 46, 76.053, 32.734

■ 95, 13.068,
195.972

■ 44, 84.008, 36.550

■ 97, 15.258,
198.490

■ 44, 88.786, 38.950

Harmonies

Complementary

The Complementary color scheme is a pair of colors which are on the opposite of each other on the color wheel.



66, 26.897, 19.804



80, 21.923, 195.036

Rectangle

The Rectangle color scheme consists of four colors that form a rectangle on the color wheel.



66, 26.897, 19.804



66, 26.897, 69.804



66, 26.897, 199.804



66, 26.897, 249.804

Sweetspot

The Sweet Spot groups the original color and five complimentary colors.



66, 26.895, 19.808



94, 8.300, 17.455



68, 42.502, 325.185



49, 5.799, 17.582



0, 0.000, 0.000



53, 0.007, 296.813

Same Dimension

The Same Dimension uses a secret algorithm to generate beautiful new colors.



66, 26.895, 19.808



75, 38.904, 20.814



73, 22.225, 67.988



41, 4.459, 17.481



35, 75.200, 38.629



4, 20.017, 18.057

Inverse Universe

The Inverse Universe completely reimagines the original color for something new.



66, 26.895, 19.808



75, 38.904, 20.814



71, 19.982, 256.620



41, 4.459, 17.481



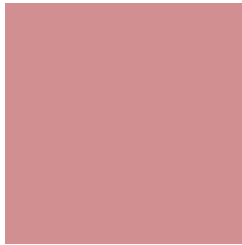
35, 75.200, 38.629



4, 20.017, 18.057

Previews

White Background



This preview shows how the CIELCh color 66, 26.897, 19.804 looks on a white background.

Color Contrast Check

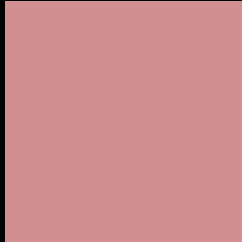
Large Text (above 18pt) WCAG AA × Fail

Any Text WCAG AA × Fail

Large Text (above 18pt) WCAG AAA × Fail

Any Text WCAG AAA × Fail

Black Background



This preview shows how the CIE LCh color 66, 26.897, 19.804 looks on a black background.

Color Contrast Check

Large Text (above 18pt) WCAG AA ✓ Pass

Any Text WCAG AA ✓ Pass

Large Text (above 18pt) WCAG AAA ✓ Pass

Any Text WCAG AAA ✓ Pass

If you want to check with other color combinations, try the [Color Contrast Checker](#).

CIELCh 66, 26.897, 19.804

Background



This preview shows how black text looks on a background with the CIELCh color 66, 26.897, 19.804.

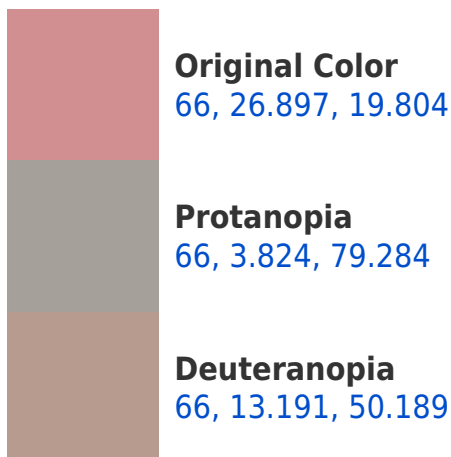


This preview shows how white text looks on a background with the CIELCh color 66, 26.897, 19.804.

Color Blindness Simulation

Color vision deficiency is a very complex topic, and I could not describe the different causes any better than Wikipedia does, so if you want to learn more, you should check out their [article about color blindness](#).

Dichromacy





Tritanopia
66, 27.722, 9.844

Trichromacy



Original Color
66, 26.897, 19.804

Protanomaly
66, 10.859, 29.066

Deuteranomaly
66, 17.579, 33.493

Tritanomaly
66, 27.632, 13.221

Monochromacy



Original Color
66, 26.897, 19.804

Achromatopsia
67, 0.008, 296.813

Achromatomaly
66, 9.411, 16.894

CSS Examples

Text

The CSS property to change the color of the text to CIELCh 66, 26.897, 19.804 is called "color". The color property can be set on classes, ids or directly on the HTML element.

This example shows how text in the color `rgb(209, 143, 145)` looks like.

```
.text, #text, p{  
    color:rgb(209, 143, 145)  
}
```

If you want to add a text shadow in that color use the text-shadow property, you can generate a text shadow directly with our [CSS Text Shadow Generator](#).

Here you see how black text with a 4 pixel rgb(209, 143, 145) colored shadow looks like.

```
.shadow{ text-shadow: 4px 4px 2px rgb(209, 143, 145) }
```

Border

The CSS property to change the border of an element to CIELCh 66, 26.897, 19.804 is called "border". The border property can be set on classes, ids or directly on the HTML element.

This example shows the color as border, it can be applied via the CSS property "border" or "border-color".

```
.border, #border, table{ border:4px solid rgb(209, 143, 145) }
```

If only the border color should be changed use the property `border-color`.

```
.border{ border-color:rgb(209, 143, 145) }
```

If you want to add a box shadow in that color use:

Here you see how a box with a 4 pixel `rgb(209, 143, 145)` colored shadow looks like.

```
.boxshadow{ -moz-box-shadow:4px 4px 4px  
4px rgb(209, 143, 145); -webkit-box-  
shadow:4px 4px 4px 4px rgb(209, 143, 145);  
box-shadow:4px 4px 4px 4px rgb(209, 143,  
145) }
```

Background

The CSS property to change the background color of an element to CIELCh 66, 26.897, 19.804 is called "background". The background property can be set on classes, ids or directly on the HTML element.

```
.background, #background, body{  
background: rgb(209, 143, 145) }
```

If only the background color should be changed can be used:

```
.background{ background-color: rgb(209,  
143, 145) }
```

This example shows the color as background, it is applied via the CSS property "background".

To optimize and compress your CSS code, you can use our [online CSS compressor and optimizer](#) based on csstidy. If you want to create a linear or radial gradient as background or border, check our [CSS Gradient Generator](#).

Hey! You found this booklet interesting? Support Converting Colors with the new Membership Option!

The pro membership hides all ads, plus gives you double the colors in the color bucket, and more awesome pro features!

[Learn more, Memberships starting at \\$2.50/m!](#)

**Follow me
on Twitter!**

@ConvertingColor