

Converting Colors

CIELCh(66, 27.979, 27.671)

Have a look what the booklet for
CIELCh(66, 27.979, 27.671) contains.

CIELCh(66, 27.981, 27.666)	3
<i>Conversions</i>	4
<i>Details</i>	6
<i>Harmonies</i>	11
<i>Previews</i>	20
<i>Color Blindness Simulation</i>	23
<i>CSS Examples</i>	26

Color

CIELCh(66, 27.981, 27.666)

Conversions

Conversions Part 1

Format	Color
Hex	D28F8A
RGB	210, 143, 138
RGB Percent	82%, 56%, 54%
CMY	0.1752, 0.4381, 0.4577
CMYK	0.00, 0.32, 0.34, 0.18
HSL	4°, 45%, 68%
HSV	4°, 34%, 82%
XYZ	41.1431, 35.3238, 28.8029
YIQ	162.4630, 41.5370, 12.6490

Conversions

Conversions Part 2

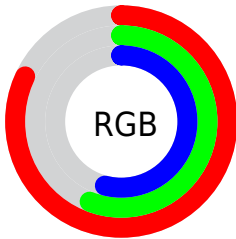
Format	Color
R _Y B	210, 143, 138
Decimal	13799306
CIE Lab	66.00, 24.78, 12.99
CIE LCh	66, 27.981, 27.666
Yxy	35.3238, 0.3908, 0.3356
Android (android.graphics.Color)	4291989386 (0xFFD28F8A)
YUV	162.4630, -12.0603, 41.6899
Hunter-Lab	59.4338, 19.5575, 12.8705

Details

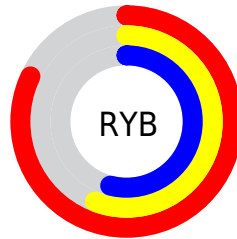
The CIELCh color **66, 27.981, 27.666** is a light color, and the websafe version is hex **CC9999**. A complement of this color would be **78, 21.872, 204.969**, and the grayscale version is **67, 0.008, 296.813**.

A 20% lighter version of the original color is **84, 22.663, 28.986**, and **46, 28.173, 27.857** is the 20% darker color. If you saturate the color by 10%, you get **61, 37.543, 28.827**, and if you desaturate by 10%, it is **71, 19.033, 26.810**.

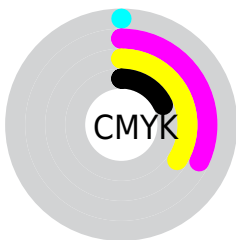
Distribution



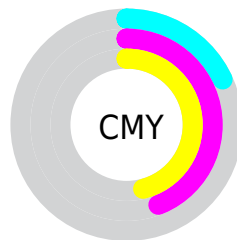
- Red (82%)
- Green (56%)
- Blue (54%)



- Red (82%)
- Yellow (56%)
- Blue (54%)



- Cyan (0%)
- Magenta (32%)
- Yellow (34%)
- Black (18%)



- Cyan (18%)
- Magenta (44%)
- Yellow (46%)

Brightness & Saturation Gradients

These gradients show how the CIELCh color 66, 27.981, 27.666 changes by changing the brightness by 10 percent. The first figure shows a shift by +10% for each color and the second figure -10%.

Similar to the brightness gradients but the following saturation gradients show a change of the CIELCh color 66, 27.981, 27.666 by changing the saturation by 10% instead.

66, 27.981, 27.666

66, 27.981, 27.666

100, 27.981,
27.666

56, 27.981, 27.666

86, 27.981, 27.666

46, 27.981, 27.666

96, 27.981, 27.666

36, 27.981, 27.666

26, 27.981, 27.666

16, 27.981, 27.666

6, 27.981, 27.666

0, 27.981, 27.666

66, 27.981, 27.666

66, 27.981, 27.666

61, 37.543, 28.827

71, 19.033, 26.810

57, 47.626, 30.357

76, 10.736, 26.165

53, 58.034, 32.329

82, 3.073, 25.584

49, 68.438, 34.741

88, 3.996, 205.601

47, 78.236, 37.386

93, 10.527,
205.294

45, 86.121, 39.588

97, 14.899,
198.513

44, 89.489, 40.650

Harmonies

Complementary

The Complementary color scheme is a pair of colors which are on the opposite of each other on the color wheel.



66, 27.981, 27.666



78, 21.872, 204.969

Rectangle

The Rectangle color scheme consists of four colors that form a rectangle on the color wheel.



66, 27.981, 27.666



66, 27.981, 77.666



66, 27.981, 207.666



66, 27.981, 257.666

Sweetspot

The Sweet Spot groups the original color and five complimentary colors.



66, 27.979, 27.671



94, 8.662, 25.939



67, 44.606, 328.220



49, 5.944, 26.015



0, 0.000, 0.000



53, 0.007, 296.813

Same Dimension

The Same Dimension uses a secret algorithm to generate beautiful new colors.



66, 27.979, 27.671



75, 40.257, 28.469



75, 25.612, 77.797



41, 4.171, 25.901



35, 75.503, 40.743



5, 19.183, 22.962

Inverse Universe

The Inverse Universe completely reimagines the original color for something new.



78, 21.872, 204.969



92, 29.617, 204.973



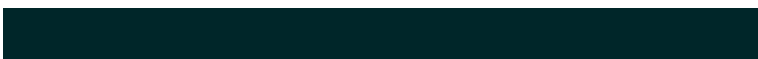
69, 24.194, 267.945



43, 3.926, 205.429



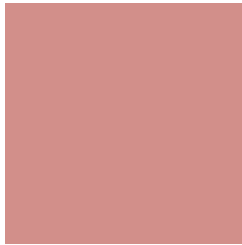
59, 33.626, 208.175



13, 13.048, 205.706

Previews

White Background



This preview shows how the CIELCh color 66, 27.981, 27.666 looks on a white background.

Color Contrast Check

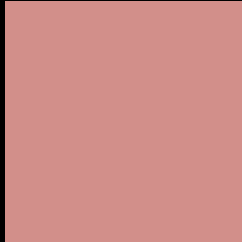
Large Text (above 18pt) WCAG AA × Fail

Any Text WCAG AA × Fail

Large Text (above 18pt) WCAG AAA × Fail

Any Text WCAG AAA × Fail

Black Background



This preview shows how the CIELCh color 66, 27.981, 27.666 looks on a black background.

Color Contrast Check

Large Text (above 18pt) WCAG AA ✓ Pass

Any Text WCAG AA ✓ Pass

Large Text (above 18pt) WCAG AAA ✓ Pass

Any Text WCAG AAA ✓ Pass

If you want to check with other color combinations, try the [Color Contrast Checker](#).

CIELCh 66, 27.981, 27.666

Background



This preview shows how black text looks on a background with the CIELCh color 66, 27.981, 27.666.

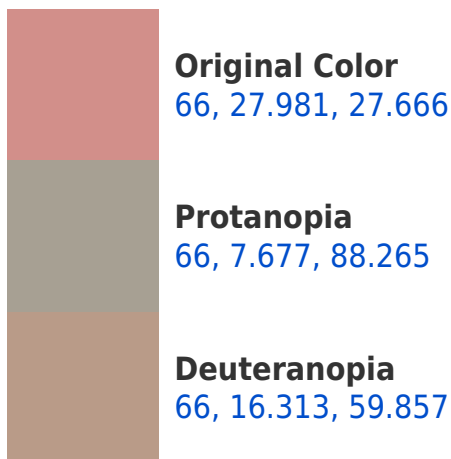


This preview shows how white text looks on a background with the CIELCh color 66, 27.981, 27.666.

Color Blindness Simulation

Color vision deficiency is a very complex topic, and I could not describe the different causes any better than Wikipedia does, so if you want to learn more, you should check out their [article about color blindness](#).

Dichromacy





Tritanopia
66, 28.948, 10.539

Trichromacy



Original Color
66, 27.981, 27.666

Protanomaly
66, 13.007, 45.292

Deuteranomaly
66, 19.524, 43.929

Tritanomaly
66, 28.058, 16.739

Monochromacy



Original Color
66, 27.981, 27.666

Achromatopsia
67, 0.008, 296.813

Achromatomaly
66, 9.528, 26.833

CSS Examples

Text

The CSS property to change the color of the text to CIELCh 66, 27.981, 27.666 is called "color". The color property can be set on classes, ids or directly on the HTML element.

This example shows how text in the color `rgb(210, 143, 138)` looks like.

```
.text, #text, p{  
    color:rgb(210, 143, 138)  
}
```

If you want to add a text shadow in that color use the text-shadow property, you can generate a text shadow directly with our [CSS Text Shadow Generator](#).

Here you see how black text with a 4 pixel rgb(210, 143, 138) colored shadow looks like.

```
.shadow{ text-shadow: 4px 4px 2px rgb(210, 143, 138) }
```

Border

The CSS property to change the border of an element to CIELCh 66, 27.981, 27.666 is called "border". The border property can be set on classes, ids or directly on the HTML element.

This example shows the color as border, it can be applied via the CSS property "border" or "border-color".

```
.border, #border, table{ border:4px solid rgb(210, 143, 138) }
```

If only the border color should be changed use the property `border-color`.

```
.border{ border-color:rgb(210, 143, 138) }
```

If you want to add a box shadow in that color use:

Here you see how a box with a 4 pixel `rgb(210, 143, 138)` colored shadow looks like.

```
.boxshadow{ -moz-box-shadow:4px 4px 4px  
4px rgb(210, 143, 138); -webkit-box-  
shadow:4px 4px 4px 4px rgb(210, 143, 138);  
box-shadow:4px 4px 4px 4px rgb(210, 143,  
138) }
```

Background

The CSS property to change the background color of an element to CIELCh 66, 27.981, 27.666 is called "background". The background property can be set on classes, ids or directly on the HTML element.

```
.background, #background, body{  
background: rgb(210, 143, 138) }
```

If only the background color should be changed can be used:

```
.background{ background-color: rgb(210,  
143, 138) }
```

This example shows the color as background, it is applied via the CSS property "background".

To optimize and compress your CSS code, you can use our [online CSS compressor and optimizer](#) based on csstidy. If you want to create a linear or radial gradient as background or border, check our [CSS Gradient Generator](#).

Hey! You found this booklet interesting? Support Converting Colors with the new Membership Option!

The pro membership hides all ads, plus gives you double the colors in the color bucket, and more awesome pro features!

[Learn more, Memberships starting at \\$2.50/m!](#)

**Follow me
on Twitter!**

@ConvertingColor