

# Converting Colors

CIELCh(66, 28.566, 65.213)

Have a look what the booklet for  
CIELCh(66, 28.566, 65.213) contains.

<b>CIELCh(66, 28.255, 65.830)</b> .....	3
<i><b>Conversions</b></i> .....	4
<i><b>Details</b></i> .....	6
<i><b>Harmonies</b></i> .....	11
<i><b>Previews</b></i> .....	20
<i><b>Color Blindness Simulation</b></i> .....	23
<i><b>CSS Examples</b></i> .....	26

# Color

**CIELCh(66, 28.255, 65.830)**

# Conversions

## Conversions Part 1

<b>Format</b>	<b>Color</b>
Hex	C49873
RGB	196, 152, 115
RGB Percent	77%, 60%, 45%
CMY	0.2323, 0.4048, 0.5498
CMYK	0.00, 0.22, 0.41, 0.23
HSL	27°, 41%, 61%
HSV	27°, 41%, 77%
XYZ	36.9801, 35.3238, 21.0261
YIQ	160.9380, 38.1010, -2.1790

# Conversions

## Conversions Part 2

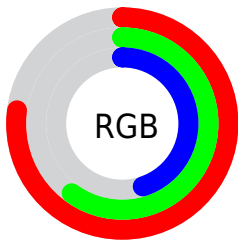
Format	Color
<a href="#">RYB</a>	<a href="#">196, 183, 115</a>
Decimal	<a href="#">12884083</a>
CIELab	<a href="#">66.00, 11.57, 25.78</a>
CIELCh	<a href="#">66, 28.255, 65.830</a>
Yxy	<a href="#">35.3238, 0.3962, 0.3785</a>
Android (android.graphics.Color)	<a href="#">4291074163 (0xFFC49873)</a>
YUV	<a href="#">160.9380, -22.6474, 30.7494</a>
Hunter-Lab	<a href="#">59.4338, 7.0546, 20.6285</a>

# Details

The CIELCh color **66, 28.255, 65.830** is a light color, and the websafe version is hex **CC9966**. A complement of this color would be **64, 24.291, 257.568**, and the grayscale version is **66, 0.008, 296.813**.

A 20% lighter version of the original color is **86, 28.321, 65.667**, and **46, 28.289, 66.304** is the 20% darker color. If you saturate the color by 10%, you get **63, 36.034, 64.700**, and if you desaturate by 10%, it is **69, 20.842, 66.978**.

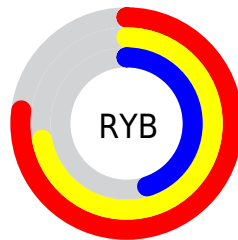
# Distribution



Red (77%)

Green (60%)

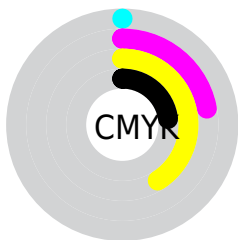
Blue (45%)



Red (77%)

Yellow (72%)

Blue (45%)

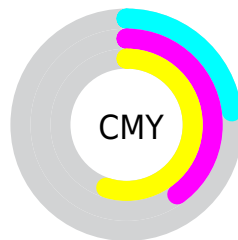


Cyan (0%)

Magenta (22%)

Yellow (41%)

Black (23%)



Cyan (23%)

Magenta (40%)

Yellow (55%)

# Brightness & Saturation Gradients

These gradients show how the CIELCh color 66, 28.255, 65.830 changes by changing the brightness by 10 percent. The first figure shows a shift by +10% for each color and the second figure -10%.

Similar to the brightness gradients but the following saturation gradients show a change of the CIELCh color 66, 28.255, 65.830 by changing the saturation by 10% instead.



66, 28.255, 65.830

66, 28.255, 65.830

100, 28.255,  
65.830

56, 28.255, 65.830

86, 28.255, 65.830

46, 28.255, 65.830

96, 28.255, 65.830

36, 28.255, 65.830

26, 28.255, 65.830

16, 28.255, 65.830

6, 28.255, 65.830

0, 28.255, 65.830

66, 28.255, 65.830

66, 28.255, 65.830

63, 36.034, 64.700

69, 20.842, 66.978

60, 44.102, 63.555

72, 13.812, 68.123

57, 52.263, 62.346

75, 7.150, 69.252

55, 60.085, 60.937

79, 0.830, 69.978

53, 66.765, 59.053

82, 5.182, 251.660

51, 71.305, 57.016

85, 10.919,  
252.725

89, 16.413,  
253.786

91, 16.121,  
234.577

94, 17.227,  
211.463

# Harmonies

# Complementary

The Complementary color scheme is a pair of colors which are on the opposite of each other on the color wheel.



66, 28.255, 65.830



64, 24.291, 257.568

# Rectangle

The Rectangle color scheme consists of four colors that form a rectangle on the color wheel.



66, 28.255, 65.830



66, 28.255, 115.830



66, 28.255, 245.830



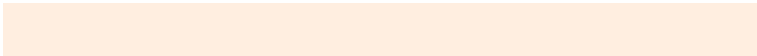
66, 28.255, 295.830

# Sweetspot

The Sweet Spot groups the original color and five complimentary colors.



66, 28.255, 65.836



95, 9.380, 69.160



58, 39.179, 344.909



50, 6.244, 69.012



0, 0.000, 0.000



53, 0.007, 296.813



# Same Dimension

The Same Dimension uses a secret algorithm to generate beautiful new colors.



66, 28.255, 65.836



81, 43.410, 64.765



76, 40.405, 103.944



39, 3.519, 69.470



42, 61.353, 57.614



6, 11.464, 53.471



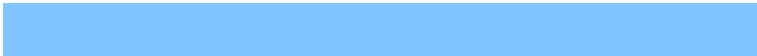


# Inverse Universe

The Inverse Universe completely reimagines the original color for something new.



64, 24.291, 257.568



77, 35.897, 260.018



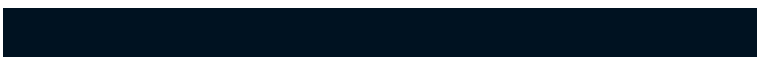
53, 44.516, 293.865



39, 3.422, 251.829



37, 46.385, 278.949

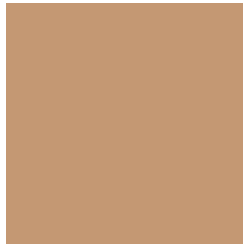


5, 12.238, 265.490



# Previews

## White Background



This preview shows how the CIELCh color 66, 28.255, 65.830 looks on a white background.

## Color Contrast Check

Large Text (above 18pt) WCAG AA × Fail

Any Text WCAG AA × Fail

Large Text (above 18pt) WCAG AAA × Fail

Any Text WCAG AAA × Fail

# Black Background



This preview shows how the CIELCh color 66, 28.255, 65.830 looks on a black background.

## Color Contrast Check

Large Text (above 18pt) WCAG AA ✓ Pass

Any Text WCAG AA ✓ Pass

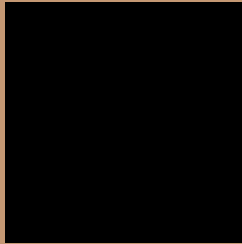
Large Text (above 18pt) WCAG AAA ✓ Pass

Any Text WCAG AAA ✓ Pass

If you want to check with other color combinations, try the [Color Contrast Checker](#).

# CIELCh 66, 28.255, 65.830

## Background



This preview shows how black text looks on a background with the CIELCh color 66, 28.255, 65.830.



This preview shows how white text looks on a background with the CIELCh color 66, 28.255, 65.830.

# Color Blindness Simulation

Color vision deficiency is a very complex topic, and I could not describe the different causes any better than Wikipedia does, so if you want to learn more, you should check out their [article about color blindness](#).

## Dichromacy



### Original Color

66, 28.255, 65.830

### Protanopia

66, 23.087, 95.136

### Deuteranopia

66, 27.492, 72.392



**Tritanopia**  
66, 22.111, 5.876



# Trichromacy



**Original Color**  
66, 28.255, 65.830

**Protanomaly**  
66, 24.386, 83.049

**Deuteranomaly**  
66, 27.905, 69.697

**Tritanomaly**  
66, 20.807, 30.349

# Monochromacy



**Original Color**  
66, 28.255, 65.830

**Achromatopsia**  
66, 0.008, 296.813

**Achromatomaly**  
66, 10.056, 69.693

# CSS Examples

## Text

The CSS property to change the color of the text to CIELCh 66, 28.255, 65.830 is called "color". The color property can be set on classes, ids or directly on the HTML element.

This example shows how text in the color `rgb(196, 152, 115)` looks like.

```
.text, #text, p{  
    color:rgb(196, 152, 115)  
}
```

If you want to add a text shadow in that color use the text-shadow property, you can generate a text shadow directly with our [CSS Text Shadow Generator](#).

Here you see how black text with a 4 pixel rgb(196, 152, 115) colored shadow looks like.

```
.shadow{ text-shadow: 4px 4px 2px rgb(196, 152, 115) }
```

## Border

The CSS property to change the border of an element to CIELCh 66, 28.255, 65.830 is called "border". The border property can be set on classes, ids or directly on the HTML element.

This example shows the color as border, it can be applied via the CSS property "border" or "border-color".

```
.border, #border, table{ border:4px solid rgb(196, 152, 115) }
```

If only the border color should be changed use the property `border-color`.

```
.border{ border-color:rgb(196, 152, 115) }
```

If you want to add a box shadow in that color use:

Here you see how a box with a 4 pixel `rgb(196, 152, 115)` colored shadow looks like.

```
.boxshadow{ -moz-box-shadow:4px 4px 4px  
4px rgb(196, 152, 115); -webkit-box-  
shadow:4px 4px 4px 4px rgb(196, 152, 115);  
box-shadow:4px 4px 4px 4px rgb(196, 152,  
115) }
```

# Background

The CSS property to change the background color of an element to CIELCh 66, 28.255, 65.830 is called "background". The background property can be set on classes, ids or directly on the HTML element.

```
.background, #background, body{  
background: rgb(196, 152, 115) }
```

If only the background color should be changed can be used:

```
.background{ background-color: rgb(196,  
152, 115) }
```

This example shows the color as background, it is applied via the CSS property "background".

To optimize and compress your CSS code, you can use our [online CSS compressor and optimizer](#) based on csstidy. If you want to create a linear or radial gradient as background or border, check our [CSS Gradient Generator](#).

Hey! You found this booklet interesting? Support Converting Colors with the new Membership Option!

The pro membership hides all ads, plus gives you double the colors in the color bucket, and more awesome pro features!

**[Learn more, Memberships starting at \\$2.50/m!](#)**

**Follow me  
on Twitter!**

@ConvertingColor