

Converting Colors

CIELCh(66, 35.772, 13.812)

Have a look what the booklet for
CIELCh(66, 35.772, 13.812) contains.

CIELCh(66, 35.547, 13.645)	3
<i>Conversions</i>	4
<i>Details</i>	6
<i>Harmonies</i>	11
<i>Previews</i>	20
<i>Color Blindness Simulation</i>	23
<i>CSS Examples</i>	26

Color

CIELCh(66, 35.547, 13.645)

Conversions

Conversions Part 1

Format	Color
Hex	DF8893
RGB	223, 136, 147
RGB Percent	87%, 53%, 58%
CMY	0.1262, 0.4673, 0.4242
CMYK	0.00, 0.39, 0.34, 0.13
HSL	352°, 57%, 70%
HSV	352°, 39%, 87%
XYZ	44.4116, 35.3238, 32.0156
YIQ	163.2670, 48.3210, 21.8650

Conversions

Conversions Part 2

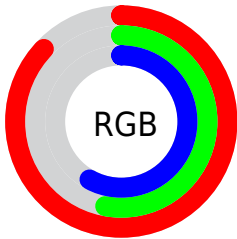
Format	Color
R _Y B	223, 136, 147
Decimal	14649491
CIE Lab	66.00, 34.54, 8.39
CIE LCh	66, 35.547, 13.645
Yxy	35.3238, 0.3974, 0.3161
Android (android.graphics.Color)	4292839571 (0xFFDF8893)
YUV	163.2670, -8.0196, 52.3858
Hunter-Lab	59.4338, 29.3740, 9.6655

Details

The CIELCh color **66, 35.547, 13.645** is a light color, and the websafe version is hex **FF9999**. A complement of this color would be **83, 28.889, 185.726**, and the grayscale version is **67, 0.008, 296.813**.

A 20% lighter version of the original color is **83, 25.174, 8.332**, and **46, 35.556, 12.831** is the 20% darker color. If you saturate the color by 10%, you get **61, 45.521, 15.626**, and if you desaturate by 10%, it is **72, 25.785, 12.076**.

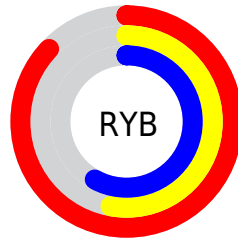
Distribution



Red (87%)

Green (53%)

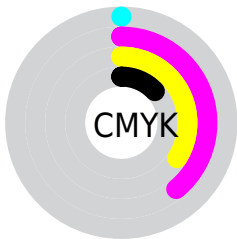
Blue (58%)



Red (87%)

Yellow (53%)

Blue (58%)

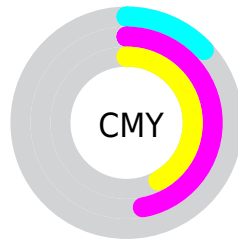


Cyan (0%)

Magenta (39%)

Yellow (34%)

Black (13%)



Cyan (13%)

Magenta (47%)

Yellow (42%)

Brightness & Saturation Gradients

These gradients show how the CIELCh color 66, 35.547, 13.645 changes by changing the brightness by 10 percent. The first figure shows a shift by +10% for each color and the second figure -10%.

Similar to the brightness gradients but the following saturation gradients show a change of the CIELCh color 66, 35.547, 13.645 by changing the saturation by 10% instead.

66, 35.547, 13.645

66, 35.547, 13.645

100, 35.547,
13.645

56, 35.547, 13.645

86, 35.547, 13.645

46, 35.547, 13.645

96, 35.547, 13.645

36, 35.547, 13.645

26, 35.547, 13.645

16, 35.547, 13.645

6, 35.547, 13.645

0, 35.547, 13.645

66, 35.547, 13.645

66, 35.547, 13.645

61, 45.521, 15.626

72, 25.785, 12.076

■ 56, 55.436, 18.140

■ 77, 16.425, 10.801

■ 53, 64.942, 21.328

■ 83, 7.560, 9.726

■ 50, 73.706, 25.280

■ 89, 0.779, 189.678

■ 48, 81.487, 29.899

■ 96, 8.599, 188.276

■ 47, 88.100, 34.610

■ 98, 10.885,
198.780

■ 47, 88.697, 35.002

Harmonies

Complementary

The Complementary color scheme is a pair of colors which are on the opposite of each other on the color wheel.



66, 35.547, 13.645



83, 28.889, 185.726

Rectangle

The Rectangle color scheme consists of four colors that form a rectangle on the color wheel.



66, 35.547, 13.645



66, 35.547, 63.645



66, 35.547, 193.645



66, 35.547, 243.645

Sweetspot

The Sweet Spot groups the original color and five complimentary colors.



66, 35.544, 13.648



92, 11.309, 10.041



67, 53.832, 322.564



48, 7.532, 10.179



0, 0.000, 0.000



53, 0.007, 296.813

Same Dimension

The Same Dimension uses a secret algorithm to generate beautiful new colors.



66, 35.544, 13.648



70, 48.543, 15.260



73, 29.225, 56.448



44, 4.785, 9.768



37, 73.705, 34.213



6, 25.317, 15.601

Inverse Universe

The Inverse Universe completely reimagines the original color for something new.



66, 35.544, 13.648



70, 48.543, 15.260



75, 23.766, 245.366



44, 4.785, 9.768



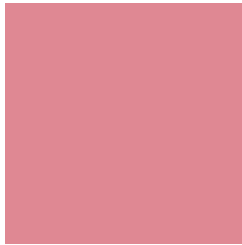
37, 73.705, 34.213



6, 25.317, 15.601

Previews

White Background



This preview shows how the CIELCh color 66, 35.547, 13.645 looks on a white background.

Color Contrast Check

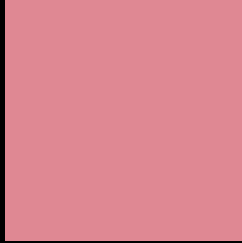
Large Text (above 18pt) WCAG AA × Fail

Any Text WCAG AA × Fail

Large Text (above 18pt) WCAG AAA × Fail

Any Text WCAG AAA × Fail

Black Background



This preview shows how the CIE LCh color 66, 35.547, 13.645 looks on a black background.

Color Contrast Check

Large Text (above 18pt) WCAG AA ✓ Pass

Any Text WCAG AA ✓ Pass

Large Text (above 18pt) WCAG AAA ✓ Pass

Any Text WCAG AAA ✓ Pass

If you want to check with other color combinations, try the [Color Contrast Checker](#).

CIELCh 66, 35.547, 13.645

Background



This preview shows how black text looks on a background with the CIELCh color 66, 35.547, 13.645.

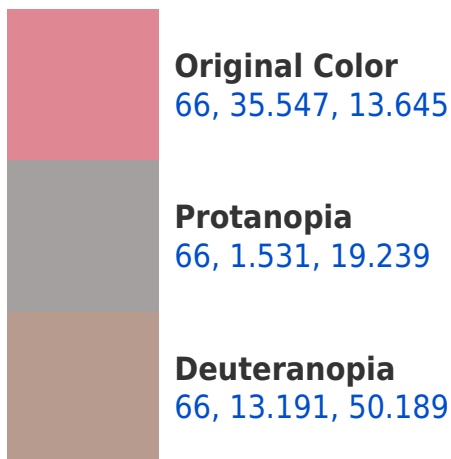


This preview shows how white text looks on a background with the CIELCh color 66, 35.547, 13.645.

Color Blindness Simulation

Color vision deficiency is a very complex topic, and I could not describe the different causes any better than Wikipedia does, so if you want to learn more, you should check out their [article about color blindness](#).

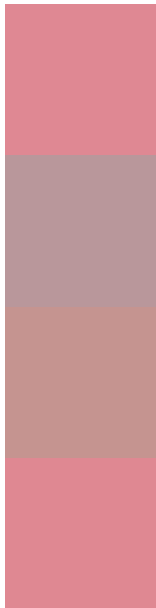
Dichromacy





Tritanopia
66, 35.556, 14.522

Trichromacy



Original Color
66, 35.547, 13.645

Protanomaly
66, 13.579, 11.388

Deuteranomaly
66, 20.127, 27.505

Tritanomaly
66, 35.556, 14.522

Monochromacy



Original Color
66, 35.547, 13.645

Achromatopsia
67, 0.008, 296.813

Achromatomaly
66, 12.753, 10.693

CSS Examples

Text

The CSS property to change the color of the text to CIELCh 66, 35.547, 13.645 is called "color". The color property can be set on classes, ids or directly on the HTML element.

This example shows how text in the color `rgb(223, 136, 147)` looks like.

```
.text, #text, p{  
    color:rgb(223, 136, 147)  
}
```

If you want to add a text shadow in that color use the text-shadow property, you can generate a text shadow directly with our [CSS Text Shadow Generator](#).

Here you see how black text with a 4 pixel rgb(223, 136, 147) colored shadow looks like.

```
.shadow{ text-shadow: 4px 4px 2px rgb(223, 136, 147) }
```

Border

The CSS property to change the border of an element to CIELCh 66, 35.547, 13.645 is called "border". The border property can be set on classes, ids or directly on the HTML element.

This example shows the color as border, it can be applied via the CSS property "border" or "border-color".

```
.border, #border, table{ border:4px solid rgb(223, 136, 147) }
```

If only the border color should be changed use the property `border-color`.

```
.border{ border-color:rgb(223, 136, 147) }
```

If you want to add a box shadow in that color use:

Here you see how a box with a 4 pixel `rgb(223, 136, 147)` colored shadow looks like.

```
.boxshadow{ -moz-box-shadow:4px 4px 4px  
4px rgb(223, 136, 147); -webkit-box-  
shadow:4px 4px 4px 4px rgb(223, 136, 147);  
box-shadow:4px 4px 4px 4px rgb(223, 136,  
147) }
```

Background

The CSS property to change the background color of an element to CIELCh 66, 35.547, 13.645 is called "background". The background property can be set on classes, ids or directly on the HTML element.

```
.background, #background, body{  
background: rgb(223, 136, 147) }
```

If only the background color should be changed can be used:

```
.background{ background-color: rgb(223,  
136, 147) }
```

This example shows the color as background, it is applied via the CSS property "background".

To optimize and compress your CSS code, you can use our [online CSS compressor and optimizer](#) based on csstidy. If you want to create a linear or radial gradient as background or border, check our [CSS Gradient Generator](#).

Hey! You found this booklet interesting? Support Converting Colors with the new Membership Option!

The pro membership hides all ads, plus gives you double the colors in the color bucket, and more awesome pro features!

[Learn more, Memberships starting at \\$2.50/m!](#)

**Follow me
on Twitter!**

@ConvertingColor