

Converting Colors

CIELCh(66, 37.372, 74.160)

Have a look what the booklet for
CIELCh(66, 37.372, 74.160) contains.

CIELCh(66, 37.418, 73.760)	3
<i>Conversions</i>	4
<i>Details</i>	6
<i>Harmonies</i>	11
<i>Previews</i>	20
<i>Color Blindness Simulation</i>	23
<i>CSS Examples</i>	26

Color

CIELCh(66, 37.418, 73.760)

Conversions

Conversions Part 1

Format	Color
Hex	C69860
RGB	198, 152, 96
RGB Percent	78%, 60%, 38%
CMY	0.2234, 0.4038, 0.6234
CMYK	0.00, 0.23, 0.52, 0.22
HSL	33°, 47%, 58%
HSV	33°, 52%, 78%
XYZ	36.6454, 35.3238, 15.9611
YIQ	159.3700, 45.3920, -7.6640

Conversions

Conversions Part 2

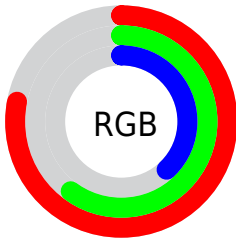
Format	Color
RYB	180, 198, 96
Decimal	13015136
CIELab	66.00, 10.46, 35.92
CIELCh	66, 37.418, 73.760
Yxy	35.3238, 0.4168, 0.4017
Android (android.graphics.Color)	4291205216 (0xFFC69860)
YUV	159.3700, -31.2414, 33.8785
Hunter-Lab	59.4338, 6.0495, 25.6812

Details

The CIELCh color **66, 37.418, 73.760** is a light color, and the websafe version is hex **CC9966**. A complement of this color would be **58, 33.807, 270.463**, and the grayscale version is **66, 0.008, 296.813**.

A 20% lighter version of the original color is **86, 36.735, 74.309**, and **46, 37.432, 73.270** is the 20% darker color. If you saturate the color by 10%, you get **64, 45.299, 72.342**, and if you desaturate by 10%, it is **69, 29.639, 75.136**.

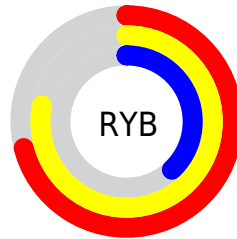
Distribution



Red (78%)

Green (60%)

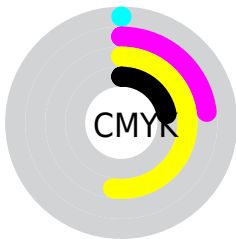
Blue (38%)



Red (71%)

Yellow (78%)

Blue (38%)

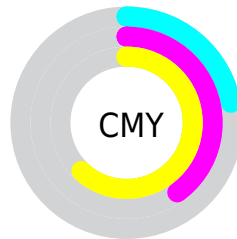


Cyan (0%)

Magenta (23%)

Yellow (52%)

Black (22%)



Cyan (22%)

Magenta (40%)

Yellow (62%)

Brightness & Saturation Gradients

These gradients show how the CIELCh color 66, 37.418, 73.760 changes by changing the brightness by 10 percent. The first figure shows a shift by +10% for each color and the second figure -10%.

Similar to the brightness gradients but the following saturation gradients show a change of the CIELCh color 66, 37.418, 73.760 by changing the saturation by 10% instead.

66, 37.418, 73.760

66, 37.418, 73.760

100, 37.418,
73.760

56, 37.418, 73.760

86, 37.418, 73.760

46, 37.418, 73.760

96, 37.418, 73.760

36, 37.418, 73.760

26, 37.418, 73.760

16, 37.418, 73.760

6, 37.418, 73.760

0, 37.418, 73.760

66, 37.418, 73.760

66, 37.418, 73.760

64, 45.299, 72.342

69, 29.639, 75.136

61, 53.033, 70.815

71, 22.079, 76.475

59, 60.133, 69.063

74, 14.782, 77.785

57, 65.801, 66.854

77, 7.756, 79.055

55, 69.294, 64.593

79, 0.990, 80.023

82, 5.535, 261.630

85, 11.841,
262.773

88, 17.951,
263.891

90, 15.981,
246.353

Harmonies

Complementary

The Complementary color scheme is a pair of colors which are on the opposite of each other on the color wheel.



66, 37.418, 73.760



58, 33.807, 270.463

Rectangle

The Rectangle color scheme consists of four colors that form a rectangle on the color wheel.



66, 37.418, 73.760



66, 37.418, 123.760



66, 37.418, 253.760



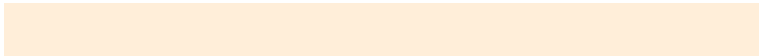
66, 37.418, 303.760

Sweetspot

The Sweet Spot groups the original color and five complimentary colors.



66, 37.418, 73.765



95, 12.505, 78.590



54, 46.544, 351.328



50, 8.567, 78.318



0, 0.000, 0.000



53, 0.007, 296.813

Same Dimension

The Same Dimension uses a secret algorithm to generate beautiful new colors.



66, 37.418, 73.765



80, 56.149, 72.133



78, 52.333, 106.913



41, 3.820, 79.315



46, 59.915, 65.150



8, 13.050, 63.632

Inverse Universe

The Inverse Universe completely reimagines the original color for something new.



58, 33.807, 270.463



68, 49.851, 274.004



46, 60.382, 298.554



40, 3.765, 261.833



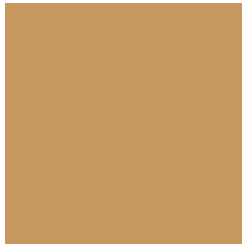
33, 56.392, 288.091



5, 14.815, 274.168

Previews

White Background



This preview shows how the CIELCh color 66, 37.418, 73.760 looks on a white background.

Color Contrast Check

Large Text (above 18pt) WCAG AA × Fail

Any Text WCAG AA × Fail

Large Text (above 18pt) WCAG AAA × Fail

Any Text WCAG AAA × Fail

Black Background



This preview shows how the CIELCh color 66, 37.418, 73.760 looks on a black background.

Color Contrast Check

Large Text (above 18pt) WCAG AA ✓ Pass

Any Text WCAG AA ✓ Pass

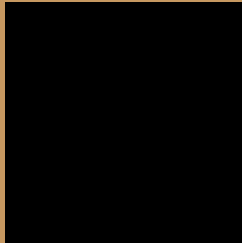
Large Text (above 18pt) WCAG AAA ✓ Pass

Any Text WCAG AAA ✓ Pass

If you want to check with other color combinations, try the [Color Contrast Checker](#).

CIELCh 66, 37.418, 73.760

Background



This preview shows how black text looks on a background with the CIELCh color 66, 37.418, 73.760.



This preview shows how white text looks on a background with the CIELCh color 66, 37.418, 73.760.

Color Blindness Simulation

Color vision deficiency is a very complex topic, and I could not describe the different causes any better than Wikipedia does, so if you want to learn more, you should check out their [article about color blindness](#).

Dichromacy



Original Color


66, 37.418, 73.760

Protanopia

66, 34.272, 96.335

Deuteranopia

66, 36.815, 76.397



Tritanopia
66, 23.693, 7.157

Trichromacy



Original Color
66, 37.418, 73.760

Protanomaly
66, 34.661, 88.206

Deuteranomaly
66, 37.063, 75.820

Tritanomaly
66, 23.620, 40.156

Monochromacy



Original Color
66, 37.418, 73.760

Achromatopsia
65, 0.008, 296.813

Achromatomaly
65, 13.084, 76.978

CSS Examples

Text

The CSS property to change the color of the text to CIELCh 66, 37.418, 73.760 is called "color". The color property can be set on classes, ids or directly on the HTML element.

This example shows how text in the color `rgb(198, 152, 96)` looks like.

```
.text, #text, p{  
    color:rgb(198, 152, 96)  
}
```

If you want to add a text shadow in that color use the text-shadow property, you can generate a text shadow directly with our [CSS Text Shadow Generator](#).

Here you see how black text with a 4 pixel rgb(198, 152, 96) colored shadow looks like.

```
.shadow{ text-shadow: 4px 4px 2px rgb(198, 152, 96) }
```

Border

The CSS property to change the border of an element to CIELCh 66, 37.418, 73.760 is called "border". The border property can be set on classes, ids or directly on the HTML element.

This example shows the color as border, it can be applied via the CSS property "border" or "border-color".

```
.border, #border, table{ border:4px solid rgb(198, 152, 96) }
```

If only the border color should be changed use the property `border-color`.

```
.border{ border-color:rgb(198, 152, 96) }
```

If you want to add a box shadow in that color use:

Here you see how a box with a 4 pixel `rgb(198, 152, 96)` colored shadow looks like.

```
.boxshadow{ -moz-box-shadow:4px 4px 4px  
4px rgb(198, 152, 96); -webkit-box-  
shadow:4px 4px 4px 4px rgb(198, 152, 96);  
box-shadow:4px 4px 4px 4px rgb(198, 152,  
96) }
```

Background

The CSS property to change the background color of an element to CIELCh 66, 37.418, 73.760 is called "background". The background property can be set on classes, ids or directly on the HTML element.

```
.background, #background, body{  
background: rgb(198, 152, 96) }
```

If only the background color should be changed can be used:

```
.background{ background-color: rgb(198,  
152, 96) }
```

This example shows the color as background, it is applied via the CSS property "background".

To optimize and compress your CSS code, you can use our [online CSS compressor and optimizer](#) based on csstidy. If you want to create a linear or radial gradient as background or border, check our [CSS Gradient Generator](#).

Hey! You found this booklet interesting? Support Converting Colors with the new Membership Option!

The pro membership hides all ads, plus gives you double the colors in the color bucket, and more awesome pro features!

[Learn more, Memberships starting at \\$2.50/m!](#)

**Follow me
on Twitter!**

@ConvertingColor