

# Converting Colors

CIELCh(66, 44.263, 16.408)

Have a look what the booklet for  
CIELCh(66, 44.263, 16.408) contains.

<b>CIELCh(66, 44.340, 16.121)</b> .....	3
<i><b>Conversions</b></i> .....	4
<i><b>Details</b></i> .....	6
<i><b>Harmonies</b></i> .....	11
<i><b>Previews</b></i> .....	20
<i><b>Color Blindness Simulation</b></i> .....	23
<i><b>CSS Examples</b></i> .....	26

# Color

**CIELCh(66, 44.340, 16.121)**

# Conversions

## Conversions Part 1

<b>Format</b>	<b>Color</b>
Hex	EC808C
RGB	236, 128, 140
RGB Percent	93%, 50%, 55%
CMY	0.0731, 0.4967, 0.4497
CMYK	0.00, 0.46, 0.41, 0.07
HSL	353°, 74%, 72%
HSV	353°, 46%, 93%
XYZ	47.2347, 35.3238, 29.2632
YIQ	161.6600, 60.5160, 26.6280

# Conversions

## Conversions Part 2

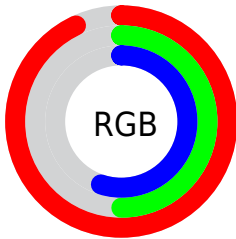
Format	Color
R <sub>Y</sub> B	236, 128, 140
Decimal	15499404
CIE Lab	66.00, 42.60, 12.31
CIE LCh	66, 44.340, 16.121
Yxy	35.3238, 0.4224, 0.3159
Android (android.graphics.Color)	4293689484 (0xFFEC808C)
YUV	161.6600, -10.6784, 65.1962
Hunter-Lab	59.4338, 37.8526, 12.4113

# Details

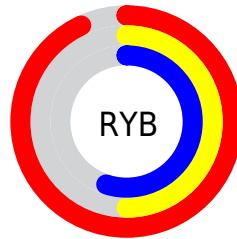
The CIELCh color **66, 44.340, 16.121** is a light color, and the websafe version is hex **FF9999**. A complement of this color would be **87, 34.236, 186.512**, and the grayscale version is **67, 0.008, 296.813**.

A 20% lighter version of the original color is **81, 27.961, 11.036**, and **46, 44.237, 16.443** is the 20% darker color. If you saturate the color by 10%, you get **61, 54.903, 18.455**, and if you desaturate by 10%, it is **72, 33.852, 14.292**.

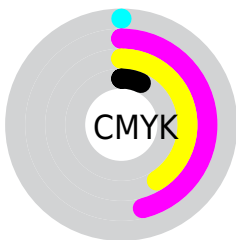
# Distribution



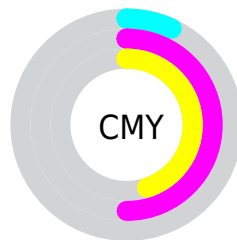
- Red (93%)
- Green (50%)
- Blue (55%)



- Red (93%)
- Yellow (50%)
- Blue (55%)



- Cyan (0%)
- Magenta (46%)
- Yellow (41%)
- Black (7%)



- Cyan (7%)
- Magenta (50%)
- Yellow (45%)

# Brightness & Saturation Gradients


These gradients show how the CIELCh color 66, 44.340, 16.121 changes by changing the brightness by 10 percent. The first figure shows a shift by +10% for each color and the second figure -10%.

Similar to the brightness gradients but the following saturation gradients show a change of the CIELCh color 66, 44.340, 16.121 by changing the saturation by 10% instead.



 66, 44.340, 16.121

 66, 44.340, 16.121

 100, 44.340,  
16.121

 56, 44.340, 16.121

 86, 44.340, 16.121

 46, 44.340, 16.121

 96, 44.340, 16.121

 36, 44.340, 16.121

 26, 44.340, 16.121

 16, 44.340, 16.121

 6, 44.340, 16.121

 0, 44.340, 16.121

 66, 44.340, 16.121

 66, 44.340, 16.121

 61, 54.903, 18.455

 72, 33.852, 14.292

■ 57, 65.204, 21.422

■ 77, 23.702, 12.836

■ 53, 74.873, 25.130

■ 84, 14.041, 11.651

■ 51, 83.599, 29.535

■ 90, 4.939, 10.616

■ 50, 91.041, 34.225

■ 96, 3.592, 190.110

■ 49, 93.801, 35.996

■ 99, 6.390, 199.104

# Harmonies

# Complementary

The Complementary color scheme is a pair of colors which are on the opposite of each other on the color wheel.



66, 44.340, 16.121



87, 34.236, 186.512

# Rectangle

The Rectangle color scheme consists of four colors that form a rectangle on the color wheel.



66, 44.340, 16.121



66, 44.340, 66.121



66, 44.340, 196.121



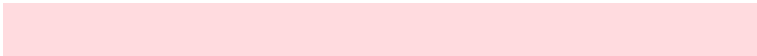
66, 44.340, 246.121

# Sweetspot

The Sweet Spot groups the original color and five complimentary colors.



66, 44.337, 16.124



91, 13.241, 11.475



68, 65.900, 323.347



47, 9.205, 11.707



0, 0.000, 0.000



53, 0.007, 296.813



# Same Dimension

The Same Dimension uses a secret algorithm to generate beautiful new colors.



66, 44.337, 16.124



66, 57.614, 18.329



75, 36.710, 57.669



46, 4.948, 11.003



38, 76.114, 35.199



7, 28.120, 18.174





# Inverse Universe

The Inverse Universe completely reimagines the original color for something new.



66, 44.337, 16.124



66, 57.614, 18.329



76, 29.003, 249.204



46, 4.948, 11.003



38, 76.114, 35.199



7, 28.120, 18.174



# Previews

## White Background



This preview shows how the CIELCh color 66, 44.340, 16.121 looks on a white background.

## Color Contrast Check

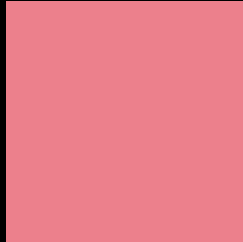
Large Text (above 18pt) WCAG AA × Fail

Any Text WCAG AA × Fail

Large Text (above 18pt) WCAG AAA × Fail

Any Text WCAG AAA × Fail

# Black Background



This preview shows how the CIELCh color 66, 44.340, 16.121 looks on a black background.

## Color Contrast Check

Large Text (above 18pt) WCAG AA ✓ Pass

Any Text WCAG AA ✓ Pass

Large Text (above 18pt) WCAG AAA ✓ Pass

Any Text WCAG AAA ✓ Pass

If you want to check with other color combinations, try the [Color Contrast Checker](#).

# CIELCh 66, 44.340, 16.121

## Background



This preview shows how black text looks on a background with the CIELCh color 66, 44.340, 16.121.

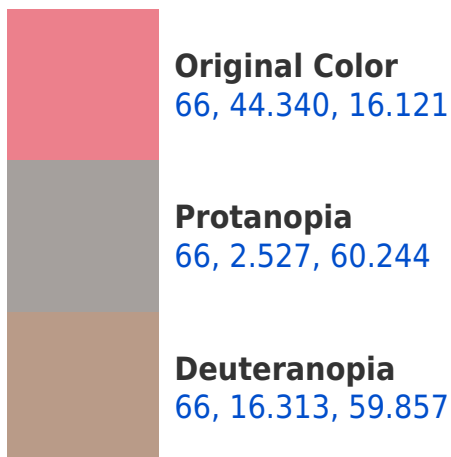


This preview shows how white text looks on a background with the CIELCh color 66, 44.340, 16.121.

# Color Blindness Simulation

Color vision deficiency is a very complex topic, and I could not describe the different causes any better than Wikipedia does, so if you want to learn more, you should check out their [article about color blindness](#).

## Dichromacy

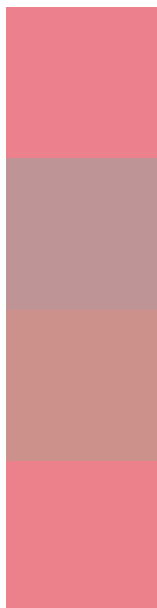




**Tritanopia**  
66, 44.047, 18.072



# Trichromacy



**Original Color**  
66, 44.340, 16.121

**Protanomaly**  
65, 17.235, 15.612

**Deuteranomaly**  
66, 24.823, 30.536

**Tritanomaly**  
66, 43.987, 17.368

# Monochromacy



**Original Color**  
66, 44.340, 16.121

**Achromatopsia**  
67, 0.008, 296.813

**Achromatomaly**  
66, 15.596, 12.827

# CSS Examples

## Text

The CSS property to change the color of the text to CIELCh 66, 44.340, 16.121 is called "color". The color property can be set on classes, ids or directly on the HTML element.

This example shows how text in the color `rgb(236, 128, 140)` looks like.

```
.text, #text, p{  
    color:rgb(236, 128, 140)  
}
```

If you want to add a text shadow in that color use the text-shadow property, you can generate a text shadow directly with our [CSS Text Shadow Generator](#).

Here you see how black text with a 4 pixel rgb(236, 128, 140) colored shadow looks like.

```
.shadow{ text-shadow: 4px 4px 2px rgb(236, 128, 140) }
```

## Border

The CSS property to change the border of an element to CIELCh 66, 44.340, 16.121 is called "border". The border property can be set on classes, ids or directly on the HTML element.

This example shows the color as border, it can be applied via the CSS property "border" or "border-color".

```
.border, #border, table{ border:4px solid rgb(236, 128, 140) }
```

If only the border color should be changed use the property border-color.

```
.border{ border-color:rgb(236, 128, 140) }
```

If you want to add a box shadow in that color use:

Here you see how a box with a 4 pixel rgb(236, 128, 140) colored shadow looks like.

```
.boxshadow{ -moz-box-shadow:4px 4px 4px  
4px rgb(236, 128, 140); -webkit-box-  
shadow:4px 4px 4px 4px rgb(236, 128, 140);  
box-shadow:4px 4px 4px 4px rgb(236, 128,  
140) }
```

# Background

The CSS property to change the background color of an element to CIELCh 66, 44.340, 16.121 is called "background". The background property can be set on classes, ids or directly on the HTML element.

```
.background, #background, body{  
background: rgb(236, 128, 140) }
```

If only the background color should be changed can be used:

```
.background{ background-color: rgb(236,  
128, 140) }
```

This example shows the color as background, it is applied via the CSS property "background".

To optimize and compress your CSS code, you can use our [online CSS compressor and optimizer](#) based on csstidy. If you want to create a linear or radial gradient as background or border, check our [CSS Gradient Generator](#).

Hey! You found this booklet interesting? Support Converting Colors with the new Membership Option!

The pro membership hides all ads, plus gives you double the colors in the color bucket, and more awesome pro features!

**[Learn more, Memberships starting at \\$2.50/m!](#)**

**Follow me  
on Twitter!**

@ConvertingColor