

Converting Colors

CIELCh(66, 55.513, 3.656)

Have a look what the booklet for
CIELCh(66, 55.513, 3.656) contains.

CIELCh(66, 55.442, 3.902)	3
<i>Conversions</i>	4
<i>Details</i>	6
<i>Harmonies</i>	11
<i>Previews</i>	20
<i>Color Blindness Simulation</i>	23
<i>CSS Examples</i>	26

Color

CIELCh(66, 55.442, 3.902)

Conversions

Conversions Part 1

Format	Color
Hex	FB749C
RGB	251, 116, 156
RGB Percent	98%, 45%, 61%
CMY	0.0164, 0.5457, 0.3888
CMYK	0.00, 0.54, 0.38, 0.02
HSL	342°, 94%, 72%
HSV	342°, 54%, 98%
XYZ	51.9325, 35.3238, 35.4639
YIQ	160.9250, 67.6200, 41.0600

Conversions

Conversions Part 2

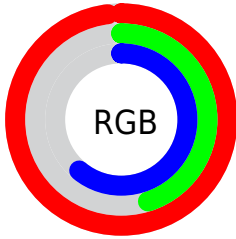
Format	Color
RYB	251, 116, 156
Decimal	16479388
CIELab	66.00, 55.31, 3.77
CIElCh	66, 55.442, 3.902
Yxy	35.3238, 0.4232, 0.2878
Android (android.graphics.Color)	4294669468 (0xFFFB749C)
YUV	160.9250, -2.4280, 78.9958
Hunter-Lab	59.4338, 51.9617, 6.2256

Details

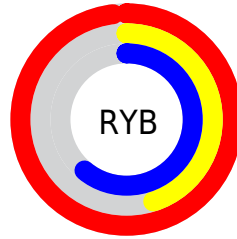
The CIELCh color **66, 55.442, 3.902** is a light color, and the websafe version is hex **FF6699**. A complement of this color would be **90, 47.051, 170.212**, and the grayscale version is **66, 0.008, 296.813**.

A 20% lighter version of the original color is **79, 36.308, 349.264**, and **46, 55.662, 3.922** is the 20% darker color. If you saturate the color by 10%, you get **61, 64.891, 6.516**, and if you desaturate by 10%, it is **71, 45.192, 1.825**.

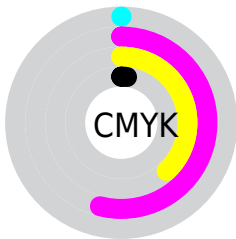
Distribution



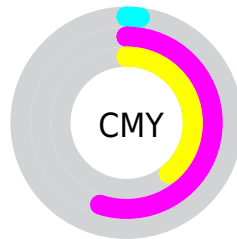
- Red (98%)
- Green (45%)
- Blue (61%)



- Red (98%)
- Yellow (45%)
- Blue (61%)



- Cyan (0%)
- Magenta (54%)
- Yellow (38%)
- Black (2%)



- Cyan (2%)
- Magenta (55%)
- Yellow (39%)

Brightness & Saturation Gradients

These gradients show how the CIELCh color 66, 55.442, 3.902 changes by changing the brightness by 10 percent. The first figure shows a shift by +10% for each color and the second figure -10%.

Similar to the brightness gradients but the following saturation gradients show a change of the CIELCh color 66, 55.442, 3.902 by changing the saturation by 10% instead.

 66, 55.442, 3.902

 66, 55.442, 3.902

 100, 55.442, 3.902

 56, 55.442, 3.902

 86, 55.442, 3.902

 46, 55.442, 3.902

 96, 55.442, 3.902

 36, 55.442, 3.902

 26, 55.442, 3.902

 16, 55.442, 3.902

 6, 55.442, 3.902

 0, 55.442, 3.902

 66, 55.442, 3.902

 66, 55.442, 3.902

 61, 64.891, 6.516

 71, 45.192, 1.825

■ 58, 73.067, 9.835

■ 77, 34.604, 0.139

■ 55, 79.639, 14.027

■ 83, 24.023,
358.738

■ 53, 84.651, 19.158

■ 89, 13.678,
357.542

■ 53, 87.333, 22.628

■ 96, 3.700, 356.415

■ 100, 1.452,
199.770

Harmonies

Complementary

The Complementary color scheme is a pair of colors which are on the opposite of each other on the color wheel.



66, 55.442, 3.902



90, 47.051, 170.212

Rectangle

The Rectangle color scheme consists of four colors that form a rectangle on the color wheel.



66, 55.442, 3.902



66, 55.442, 53.902



66, 55.442, 183.902



66, 55.442, 233.902

Sweetspot

The Sweet Spot groups the original color and five complimentary colors.



66, 55.439, 3.904



89, 16.127, 357.791



64, 78.527, 317.954



46, 10.931, 358.031



0, 0.000, 0.000



53, 0.007, 296.813

Same Dimension

The Same Dimension uses a secret algorithm to generate beautiful new colors.



66, 55.439, 3.904



62, 66.818, 6.887



70, 49.972, 40.107



49, 5.563, 357.066



40, 70.083, 21.534



9, 30.583, 12.273

Inverse Universe

The Inverse Universe completely reimagines the original color for something new.



66, 55.439, 3.904



62, 66.818, 6.887



84, 32.883, 223.535



49, 5.563, 357.066



40, 70.083, 21.534



9, 30.583, 12.273

Previews

White Background



This preview shows how the CIELCh color 66, 55.442, 3.902 looks on a white background.

Color Contrast Check

Large Text (above 18pt) WCAG AA × Fail

Any Text WCAG AA × Fail

Large Text (above 18pt) WCAG AAA × Fail

Any Text WCAG AAA × Fail

Black Background



This preview shows how the CIELCh color 66, 55.442, 3.902 looks on a black background.

Color Contrast Check

Large Text (above 18pt) WCAG AA ✓ Pass

Any Text WCAG AA ✓ Pass

Large Text (above 18pt) WCAG AAA ✓ Pass

Any Text WCAG AAA ✓ Pass

If you want to check with other color combinations, try the [Color Contrast Checker](#).

CIELCh 66, 55.442, 3.902

Background



This preview shows how black text looks on a background with the CIELCh color 66, 55.442, 3.902.



This preview shows how white text looks on a background with the CIELCh color 66, 55.442, 3.902.

Color Blindness Simulation

Color vision deficiency is a very complex topic, and I could not describe the different causes any better than Wikipedia does, so if you want to learn more, you should check out their [article about color blindness](#).

Dichromacy



Original Color

66, 55.442, 3.902

Protanopia

66, 12.216, 286.403

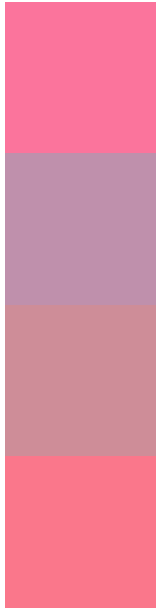
Deuteranopia

66, 10.334, 35.646



Tritanopia
66, 53.105, 21.028

Trichromacy



Original Color
66, 55.442, 3.902

Protanomaly
65, 23.576, 340.793

Deuteranomaly
65, 26.568, 9.144

Tritanomaly
66, 53.515, 14.495

Monochromacy



Original Color
66, 55.442, 3.902

Achromatopsia
66, 0.008, 296.813

Achromatomaly
65, 20.633, 359.628

CSS Examples

Text

The CSS property to change the color of the text to CIELCh 66, 55.442, 3.902 is called "color". The color property can be set on classes, ids or directly on the HTML element.

This example shows how text in the color `rgb(251, 116, 156)` looks like.

```
.text, #text, p{  
    color:rgb(251, 116, 156)  
}
```

If you want to add a text shadow in that color use the text-shadow property, you can generate a text shadow directly with our [CSS Text Shadow Generator](#).

Here you see how black text with a 4 pixel rgb(251, 116, 156) colored shadow looks like.

```
.shadow{ text-shadow: 4px 4px 2px rgb(251, 116, 156) }
```

Border

The CSS property to change the border of an element to CIELCh 66, 55.442, 3.902 is called "border". The border property can be set on classes, ids or directly on the HTML element.

This example shows the color as border, it can be applied via the CSS property "border" or "border-color".

```
.border, #border, table{ border:4px solid rgb(251, 116, 156) }
```

If only the border color should be changed use the property `border-color`.

```
.border{ border-color:rgb(251, 116, 156) }
```

If you want to add a box shadow in that color use:

Here you see how a box with a 4 pixel `rgb(251, 116, 156)` colored shadow looks like.

```
.boxshadow{ -moz-box-shadow:4px 4px 4px 4px rgb(251, 116, 156); -webkit-box-shadow:4px 4px 4px 4px rgb(251, 116, 156); box-shadow:4px 4px 4px 4px rgb(251, 116, 156) }
```

Background

The CSS property to change the background color of an element to CIELCh 66, 55.442, 3.902 is called "background". The background property can be set on classes, ids or directly on the HTML element.

```
.background, #background, body{  
background: rgb(251, 116, 156) }
```

If only the background color should be changed can be used:

```
.background{ background-color: rgb(251,  
116, 156) }
```

This example shows the color as background, it is applied via the CSS property "background".

To optimize and compress your CSS code, you can use our [online CSS compressor and optimizer](#) based on csstidy. If you want to create a linear or radial gradient as background or border, check our [CSS Gradient Generator](#).

Hey! You found this booklet interesting? Support Converting Colors with the new Membership Option!

The pro membership hides all ads, plus gives you double the colors in the color bucket, and more awesome pro features!

[Learn more, Memberships starting at \\$2.50/m!](#)

**Follow me
on Twitter!**

@ConvertingColor