

Converting Colors

CIELCh(66, 57.803, 21.178)

Have a look what the booklet for
CIELCh(66, 57.803, 21.178) contains.

CIELCh(66, 57.605, 21.105)	3
<i>Conversions</i>	4
<i>Details</i>	6
<i>Harmonies</i>	11
<i>Previews</i>	20
<i>Color Blindness Simulation</i>	23
<i>CSS Examples</i>	26

Color

CIELCh(66, 57.605, 21.105)

Conversions

Conversions Part 1

Format	Color
Hex	FF747E
RGB	255, 116, 126
RGB Percent	100%, 45%, 49%
CMY	0.0000, 0.5445, 0.5054
CMYK	0.00, 0.54, 0.51, 0.00
HSL	356°, 100%, 73%
HSV	356°, 54%, 100%
XYZ	51.3354, 35.3238, 23.8953
YIQ	158.7010, 79.6340, 32.5780

Conversions

Conversions Part 2

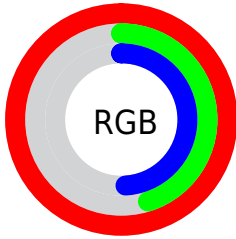
Format	Color
R _Y B	255, 116, 126
Decimal	16741502
CIE Lab	66.00, 53.74, 20.74
CIE LCh	66, 57.605, 21.105
Yxy	35.3238, 0.4643, 0.3195
Android (android.graphics.Color)	4294931582 (0xFFFF747E)
YUV	158.7010, -16.1216, 84.4542
Hunter-Lab	59.4338, 50.1685, 17.7663

Details

The CIELCh color **66, 57.605, 21.105** is a light color, and the websafe version is hex **FF6666**. A complement of this color would be **93, 40.602, 189.532**, and the grayscale version is **65, 0.008, 296.813**.

A 20% lighter version of the original color is **78, 32.567, 15.858**, and **46, 57.370, 21.278** is the 20% darker color. If you saturate the color by 10%, you get **61, 68.960, 23.962**, and if you desaturate by 10%, it is **71, 45.999, 18.850**.

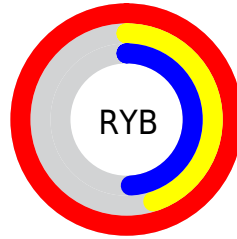
Distribution



Red (100%)

Green (45%)

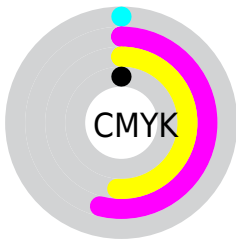
Blue (49%)



Red (100%)

Yellow (45%)

Blue (49%)

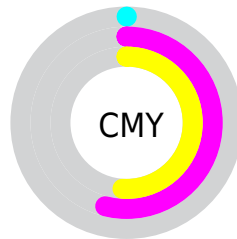


Cyan (0%)

Magenta (54%)

Yellow (51%)

Black (0%)



Cyan (0%)

Magenta (54%)

Yellow (51%)

Brightness & Saturation Gradients

These gradients show how the CIELCh color 66, 57.605, 21.105 changes by changing the brightness by 10 percent. The first figure shows a shift by +10% for each color and the second figure -10%.

Similar to the brightness gradients but the following saturation gradients show a change of the CIELCh color 66, 57.605, 21.105 by changing the saturation by 10% instead.

66, 57.605, 21.105

66, 57.605, 21.105

100, 57.605,
21.105

56, 57.605, 21.105

86, 57.605, 21.105

46, 57.605, 21.105

96, 57.605, 21.105

36, 57.605, 21.105

26, 57.605, 21.105

16, 57.605, 21.105

6, 57.605, 21.105

0, 57.605, 21.105

66, 57.605, 21.105

66, 57.605, 21.105

61, 68.960, 23.962

71, 45.999, 18.850

■ 58, 79.861, 27.537

■ 77, 34.691, 17.100

■ 55, 89.815, 31.723

■ 84, 23.855, 15.724

■ 54, 98.153, 35.990

■ 90, 13.625, 14.617

■ 53, 101.686,
37.897

■ 97, 4.053, 13.628

100, 0.012,
296.813

Harmonies

Complementary

The Complementary color scheme is a pair of colors which are on the opposite of each other on the color wheel.



66, 57.605, 21.105



93, 40.602, 189.532

Rectangle

The Rectangle color scheme consists of four colors that form a rectangle on the color wheel.



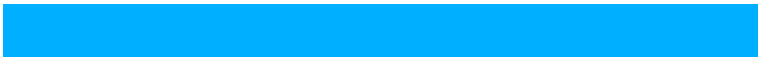
66, 57.605, 21.105



66, 57.605, 71.105



66, 57.605, 201.105



66, 57.605, 251.105

Sweetspot

The Sweet Spot groups the original color and five complimentary colors.



66, 57.538, 21.094



89, 15.167, 14.775



69, 82.543, 324.694



46, 10.313, 14.991



0, 0.000, 0.000



53, 0.007, 296.813

Same Dimension

The Same Dimension uses a secret algorithm to generate beautiful new colors.



66, 57.538, 21.094



61, 69.575, 24.140



78, 47.764, 60.259



50, 5.269, 14.135



40, 81.248, 37.260



10, 32.800, 24.276

Inverse Universe

The Inverse Universe completely reimagines the original color for something new.



66, 57.538, 21.094



61, 69.575, 24.140



77, 37.069, 256.193



50, 5.269, 14.135



40, 81.248, 37.260



10, 32.800, 24.276

Previews

White Background



This preview shows how the CIELCh color 66, 57.605, 21.105 looks on a white background.

Color Contrast Check

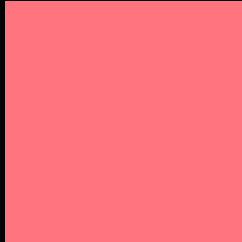
Large Text (above 18pt) WCAG AA × Fail

Any Text WCAG AA × Fail

Large Text (above 18pt) WCAG AAA × Fail

Any Text WCAG AAA × Fail

Black Background



This preview shows how the CIELCh color 66, 57.605, 21.105 looks on a black background.

Color Contrast Check

Large Text (above 18pt) WCAG AA ✓ Pass

Any Text WCAG AA ✓ Pass

Large Text (above 18pt) WCAG AAA ✓ Pass

Any Text WCAG AAA ✓ Pass

If you want to check with other color combinations, try the [Color Contrast Checker](#).

CIELCh 66, 57.605, 21.105

Background



This preview shows how black text looks on a background with the CIELCh color 66, 57.605, 21.105.



This preview shows how white text looks on a background with the CIELCh color 66, 57.605, 21.105.

Color Blindness Simulation

Color vision deficiency is a very complex topic, and I could not describe the different causes any better than Wikipedia does, so if you want to learn more, you should check out their [article about color blindness](#).

Dichromacy



Original Color

66, 57.605, 21.105

Protanopia

66, 7.162, 86.775

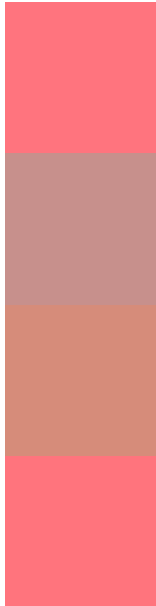
Deuteranopia

66, 24.480, 69.386



Tritanopia
66, 57.846, 22.159

Trichromacy



Original Color
66, 57.605, 21.105

Protanomaly
65, 22.763, 27.090

Deuteranomaly
65, 33.643, 39.142

Tritanomaly
66, 57.722, 21.633

Monochromacy



Original Color
66, 57.605, 21.105

Achromatopsia
65, 0.008, 296.813

Achromatomaly
64, 20.638, 15.391

CSS Examples

Text

The CSS property to change the color of the text to CIELCh 66, 57.605, 21.105 is called "color". The color property can be set on classes, ids or directly on the HTML element.

This example shows how text in the color `rgb(255, 116, 126)` looks like.

```
.text, #text, p{  
    color:rgb(255, 116, 126)  
}
```

If you want to add a text shadow in that color use the text-shadow property, you can generate a text shadow directly with our [CSS Text Shadow Generator](#).

Here you see how black text with a 4 pixel rgb(255, 116, 126) colored shadow looks like.

```
.shadow{ text-shadow: 4px 4px 2px rgb(255, 116, 126) }
```

Border

The CSS property to change the border of an element to CIELCh 66, 57.605, 21.105 is called "border". The border property can be set on classes, ids or directly on the HTML element.

This example shows the color as border, it can be applied via the CSS property "border" or "border-color".

```
.border, #border, table{ border:4px solid rgb(255, 116, 126) }
```

If only the border color should be changed use the property `border-color`.

```
.border{ border-color:rgb(255, 116, 126) }
```

If you want to add a box shadow in that color use:

Here you see how a box with a 4 pixel `rgb(255, 116, 126)` colored shadow looks like.

```
.boxshadow{ -moz-box-shadow:4px 4px 4px  
4px rgb(255, 116, 126); -webkit-box-  
shadow:4px 4px 4px 4px rgb(255, 116, 126);  
box-shadow:4px 4px 4px 4px rgb(255, 116,  
126) }
```

Background

The CSS property to change the background color of an element to CIELCh 66, 57.605, 21.105 is called "background". The background property can be set on classes, ids or directly on the HTML element.

```
.background, #background, body{  
background: rgb(255, 116, 126) }
```

If only the background color should be changed can be used:

```
.background{ background-color: rgb(255,  
116, 126) }
```

This example shows the color as background, it is applied via the CSS property "background".

To optimize and compress your CSS code, you can use our [online CSS compressor and optimizer](#) based on csstidy. If you want to create a linear or radial gradient as background or border, check our [CSS Gradient Generator](#).

Hey! You found this booklet interesting? Support Converting Colors with the new Membership Option!

The pro membership hides all ads, plus gives you double the colors in the color bucket, and more awesome pro features!

[Learn more, Memberships starting at \\$2.50/m!](#)

**Follow me
on Twitter!**

@ConvertingColor