

Converting Colors

CIELCh(66, 58.145, 8.068)

Have a look what the booklet for
CIELCh(66, 58.145, 8.068) contains.

CIELCh(66, 57.741, 8.153)	3
<i>Conversions</i>	4
<i>Details</i>	6
<i>Harmonies</i>	11
<i>Previews</i>	20
<i>Color Blindness Simulation</i>	23
<i>CSS Examples</i>	26

Color

CIELCh(66, 57.741, 8.153)

Conversions

Conversions Part 1

Format	Color
Hex	FF7194
RGB	255, 113, 148
RGB Percent	100%, 44%, 58%
CMY	0.0000, 0.5559, 0.4187
CMYK	0.00, 0.56, 0.42, 0.00
HSL	345°, 100%, 72%
HSV	345°, 56%, 100%
XYZ	52.6385, 35.3238, 32.1582
YIQ	159.4480, 73.3970, 40.9890

Conversions

Conversions Part 2

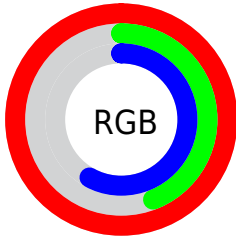
Format	Color
RYB	255, 113, 148
Decimal	16740756
CIELab	66.00, 57.16, 8.19
CIElCh	66, 57.741, 8.153
Yxy	35.3238, 0.4382, 0.2941
Android (android.graphics.Color)	4294930836 (0xFFFF7194)
YUV	159.4480, -5.6439, 83.7991
Hunter-Lab	59.4338, 54.0820, 9.5233

Details

The CIELCh color **66, 57.741, 8.153** is a light color, and the websafe version is hex **FF6699**. A complement of this color would be **92, 46.884, 173.696**, and the grayscale version is **66, 0.008, 296.813**.

A 20% lighter version of the original color is **78, 36.241, 354.118**, and **46, 57.842, 7.849** is the 20% darker color. If you saturate the color by 10%, you get **61, 67.342, 10.972**, and if you desaturate by 10%, it is **71, 47.197, 5.841**.

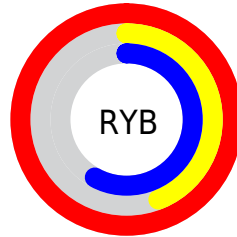
Distribution



Red (100%)

Green (44%)

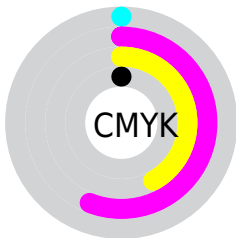
Blue (58%)



Red (100%)

Yellow (44%)

Blue (58%)

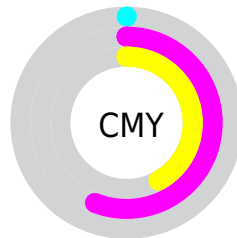


Cyan (0%)

Magenta (56%)

Yellow (42%)

Black (0%)



Cyan (0%)

Magenta (56%)


Yellow (42%)

Brightness & Saturation Gradients

These gradients show how the CIELCh color 66, 57.741, 8.153 changes by changing the brightness by 10 percent. The first figure shows a shift by +10% for each color and the second figure -10%.

Similar to the brightness gradients but the following saturation gradients show a change of the CIELCh color 66, 57.741, 8.153 by changing the saturation by 10% instead.

 66, 57.741, 8.153  66, 57.741, 8.153

 100, 57.741, 8.153  56, 57.741, 8.153

 86, 57.741, 8.153  46, 57.741, 8.153

 96, 57.741, 8.153  36, 57.741, 8.153

 26, 57.741, 8.153

 16, 57.741, 8.153

 6, 57.741, 8.153

 0, 57.741, 8.153

 66, 57.741, 8.153  66, 57.741, 8.153

 61, 67.342, 10.972  71, 47.197, 5.841

■ 58, 75.862, 14.609

■ 77, 36.459, 4.025

■ 55, 82.942, 19.142

■ 83, 25.774, 2.538

■ 54, 88.697, 24.517

■ 90, 15.371, 1.288

■ 54, 91.064, 26.967

■ 96, 5.381, 0.168

100, 0.012,
296.813

Harmonies

Complementary

The Complementary color scheme is a pair of colors which are on the opposite of each other on the color wheel.



66, 57.741, 8.153



92, 46.884, 173.696

Rectangle

The Rectangle color scheme consists of four colors that form a rectangle on the color wheel.



66, 57.741, 8.153



66, 57.741, 58.153



66, 57.741, 188.153



66, 57.741, 238.153

Sweetspot

The Sweet Spot groups the original color and five complimentary colors.



66, 57.640, 8.105



89, 16.819, 1.454



65, 82.402, 319.557



46, 11.300, 1.694



0, 0.000, 0.000



53, 0.007, 296.813

Same Dimension

The Same Dimension uses a secret algorithm to generate beautiful new colors.



66, 57.640, 8.105



61, 68.628, 11.436



72, 51.281, 44.445



50, 5.528, 0.606



40, 72.764, 25.892



10, 31.717, 16.182

Inverse Universe

The Inverse Universe completely reimagines the original color for something new.



66, 57.640, 8.105



61, 68.628, 11.436



83, 33.927, 231.653



50, 5.528, 0.606



40, 72.764, 25.892



10, 31.717, 16.182

Previews

White Background



This preview shows how the CIELCh color 66, 57.741, 8.153 looks on a white background.

Color Contrast Check

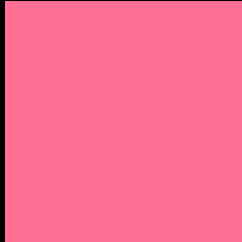
Large Text (above 18pt) WCAG AA × Fail

Any Text WCAG AA × Fail

Large Text (above 18pt) WCAG AAA × Fail

Any Text WCAG AAA × Fail

Black Background



This preview shows how the CIELCh color 66, 57.741, 8.153 looks on a black background.

Color Contrast Check

Large Text (above 18pt) WCAG AA ✓ Pass

Any Text WCAG AA ✓ Pass

Large Text (above 18pt) WCAG AAA ✓ Pass

Any Text WCAG AAA ✓ Pass

If you want to check with other color combinations, try the [Color Contrast Checker](#).

CIELCh 66, 57.741, 8.153

Background



This preview shows how black text looks on a background with the CIELCh color 66, 57.741, 8.153.

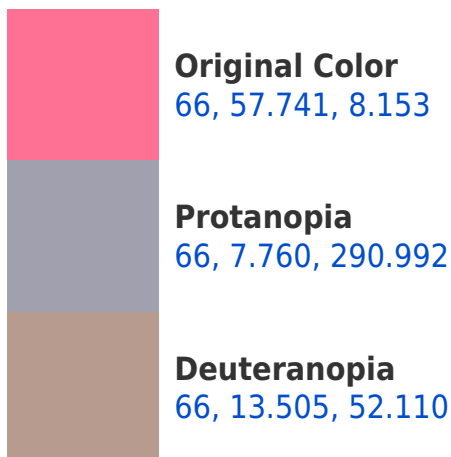


This preview shows how white text looks on a background with the CIELCh color 66, 57.741, 8.153.

Color Blindness Simulation

Color vision deficiency is a very complex topic, and I could not describe the different causes any better than Wikipedia does, so if you want to learn more, you should check out their [article about color blindness](#).

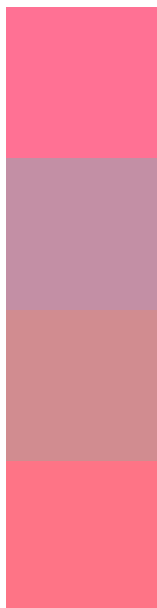
Dichromacy





Tritanopia
66, 56.459, 21.334

Trichromacy



Original Color
66, 57.741, 8.153

Protanomaly
65, 23.385, 350.630

Deuteranomaly
65, 28.165, 17.891

Tritanomaly
66, 56.482, 16.681

Monochromacy



Original Color
66, 57.741, 8.153

Achromatopsia
66, 0.008, 296.813

Achromatomaly
65, 21.655, 2.391

CSS Examples

Text

The CSS property to change the color of the text to CIELCh 66, 57.741, 8.153 is called "color". The color property can be set on classes, ids or directly on the HTML element.

This example shows how text in the color `rgb(255, 113, 148)` looks like.

```
.text, #text, p{  
    color:rgb(255, 113, 148)  
}
```

If you want to add a text shadow in that color use the text-shadow property, you can generate a text shadow directly with our [CSS Text Shadow Generator](#).

Here you see how black text with a 4 pixel rgb(255, 113, 148) colored shadow looks like.

```
.shadow{ text-shadow: 4px 4px 2px rgb(255, 113, 148) }
```

Border

The CSS property to change the border of an element to CIELCh 66, 57.741, 8.153 is called "border". The border property can be set on classes, ids or directly on the HTML element.

This example shows the color as border, it can be applied via the CSS property "border" or "border-color".

```
.border, #border, table{ border:4px solid rgb(255, 113, 148) }
```

If only the border color should be changed use the property `border-color`.

```
.border{ border-color:rgb(255, 113, 148) }
```

If you want to add a box shadow in that color use:

Here you see how a box with a 4 pixel `rgb(255, 113, 148)` colored shadow looks like.

```
.boxshadow{ -moz-box-shadow:4px 4px 4px  
4px rgb(255, 113, 148); -webkit-box-  
shadow:4px 4px 4px 4px rgb(255, 113, 148);  
box-shadow:4px 4px 4px 4px rgb(255, 113,  
148) }
```

Background

The CSS property to change the background color of an element to CIELCh 66, 57.741, 8.153 is called "background". The background property can be set on classes, ids or directly on the HTML element.

```
.background, #background, body{  
background: rgb(255, 113, 148) }
```

If only the background color should be changed can be used:

```
.background{ background-color: rgb(255,  
113, 148) }
```

This example shows the color as background, it is applied via the CSS property "background".

To optimize and compress your CSS code, you can use our [online CSS compressor and optimizer](#) based on csstidy. If you want to create a linear or radial gradient as background or border, check our [CSS Gradient Generator](#).

Hey! You found this booklet interesting? Support Converting Colors with the new Membership Option!

The pro membership hides all ads, plus gives you double the colors in the color bucket, and more awesome pro features!

[Learn more, Memberships starting at \\$2.50/m!](#)

**Follow me
on Twitter!**

@ConvertingColor