

Converting Colors

CIELCh(66, 59.246, 14.745)

Have a look what the booklet for
CIELCh(66, 59.246, 14.745) contains.

CIELCh(65, 58.265, 14.294)	3
<i>Conversions</i>	4
<i>Details</i>	6
<i>Harmonies</i>	11
<i>Previews</i>	20
<i>Color Blindness Simulation</i>	23
<i>CSS Examples</i>	26

Color

CIELCh(65, 58.265, 14.294)

Conversions

Conversions Part 1

Format	Color
Hex	FE6F87
RGB	254, 111, 135
RGB Percent	100%, 44%, 53%
CMY	0.0056, 0.5657, 0.4713
CMYK	0.00, 0.56, 0.47, 0.01
HSL	350°, 98%, 71%
HSV	350°, 56%, 99%
XYZ	50.7364, 34.0472, 26.7552
YIQ	156.4930, 77.5240, 37.7800

Conversions

Conversions Part 2

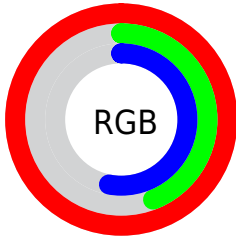
Format	Color
R_{YB}	254, 111, 135
Decimal	16674695
CIE Lab	65.00, 56.46, 14.39
CIE LCh	65, 58.265, 14.294
Yxy	34.0472, 0.4549, 0.3052
Android (android.graphics.Color)	4294864775 (0xFFFE6F87)
YUV	156.4930, -10.5960, 85.5136
Hunter-Lab	58.3500, 53.0967, 13.6587

Details

The CIELCh color **65, 58.265, 14.294** is a light color, and the websafe version is hex **FF6699**. A complement of this color would be **92, 44.234, 180.160**, and the grayscale version is **64, 0.008, 296.813**.

A 20% lighter version of the original color is **78, 35.232, 4.452**, and **45, 58.517, 14.101** is the 20% darker color. If you saturate the color by 10%, you get **61, 68.525, 17.334**, and if you desaturate by 10%, it is **70, 47.490, 11.907**.

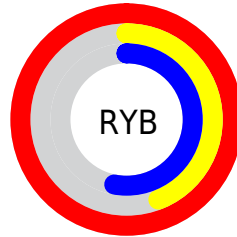
Distribution



Red (100%)

Green (44%)

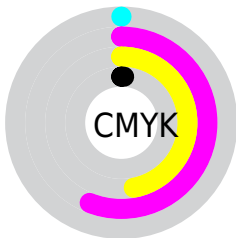
Blue (53%)



Red (100%)

Yellow (44%)

Blue (53%)

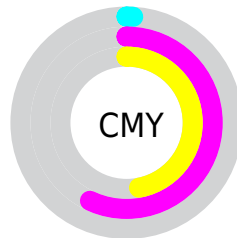


Cyan (0%)

Magenta (56%)

Yellow (47%)

Black (1%)



Cyan (1%)

Magenta (57%)

Yellow (47%)

Brightness & Saturation Gradients

These gradients show how the CIELCh color 65, 58.265, 14.294 changes by changing the brightness by 10 percent. The first figure shows a shift by +10% for each color and the second figure -10%.

Similar to the brightness gradients but the following saturation gradients show a change of the CIELCh color 65, 58.265, 14.294 by changing the saturation by 10% instead.

 65, 58.265, 14.294

 65, 58.265, 14.294

 100, 58.265,
14.294

 55, 58.265, 14.294

 85, 58.265, 14.294

 45, 58.265, 14.294

 95, 58.265, 14.294

 35, 58.265, 14.294

 25, 58.265, 14.294

 15, 58.265, 14.294

 5, 58.265, 14.294

 0, 58.265, 14.294

 65, 58.265, 14.294

 65, 58.265, 14.294

 61, 68.525, 17.334

 70, 47.490, 11.907

■ 57, 77.886, 21.157

■ 76, 36.611, 10.015

■ 55, 86.098, 25.794

■ 82, 25.936, 8.492

■ 53, 93.117, 30.979

■ 89, 15.665, 7.238

■ 53, 95.507, 32.793

■ 95, 5.902, 6.141

100, 0.493,
200.718

Harmonies

Complementary

The Complementary color scheme is a pair of colors which are on the opposite of each other on the color wheel.



65, 58.265, 14.294



92, 44.234, 180.160

Rectangle

The Rectangle color scheme consists of four colors that form a rectangle on the color wheel.



65, 58.265, 14.294



65, 58.265, 64.294



65, 58.265, 194.294



65, 58.265, 244.294

Sweetspot

The Sweet Spot groups the original color and five complimentary colors.



65, 58.262, 14.296



89, 16.413, 7.316



66, 83.587, 321.648



46, 11.039, 7.553



0, 0.000, 0.000



53, 0.007, 296.813

Same Dimension

The Same Dimension uses a secret algorithm to generate beautiful new colors.



65, 58.262, 14.296



60, 70.479, 17.922



73, 50.448, 50.463



50, 5.374, 6.485



40, 76.524, 31.846



10, 32.170, 20.219

Inverse Universe

The Inverse Universe completely reimagines the original color for something new.



65, 58.262, 14.296



60, 70.479, 17.922



79, 34.877, 242.281



50, 5.374, 6.485



40, 76.524, 31.846



10, 32.170, 20.219

Previews

White Background



This preview shows how the CIELCh color 65, 58.265, 14.294 looks on a white background.

Color Contrast Check

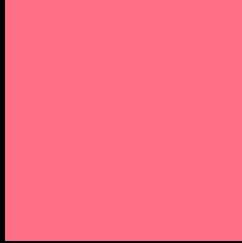
Large Text (above 18pt) WCAG AA × Fail

Any Text WCAG AA × Fail

Large Text (above 18pt) WCAG AAA × Fail

Any Text WCAG AAA × Fail

Black Background



This preview shows how the CIELCh color 65, 58.265, 14.294 looks on a black background.

Color Contrast Check

Large Text (above 18pt) WCAG AA ✓ Pass

Any Text WCAG AA ✓ Pass

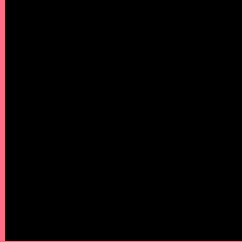
Large Text (above 18pt) WCAG AAA ✓ Pass

Any Text WCAG AAA ✓ Pass

If you want to check with other color combinations, try the [Color Contrast Checker](#).

CIELCh 65, 58.265, 14.294

Background



This preview shows how black text looks on a background with the CIELCh color 65, 58.265, 14.294.

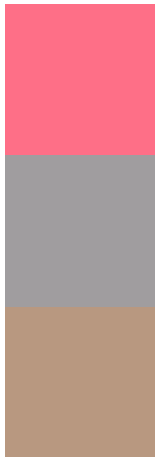


This preview shows how white text looks on a background with the CIELCh color 65, 58.265, 14.294.

Color Blindness Simulation

Color vision deficiency is a very complex topic, and I could not describe the different causes any better than Wikipedia does, so if you want to learn more, you should check out their [article about color blindness](#).

Dichromacy



Original Color

65, 58.314, 14.350

Protanopia

65, 1.611, 335.610

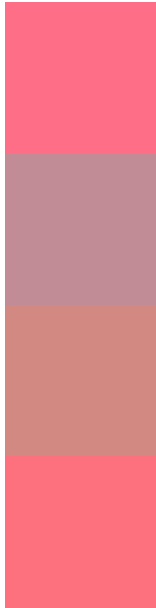
Deuteranopia

65, 19.024, 64.017



Tritanopia
65, 58.442, 22.394

Trichromacy



Original Color
65, 58.314, 14.350

Protanomaly
64, 22.186, 7.381

Deuteranomaly
64, 30.663, 29.551

Tritanomaly
65, 58.212, 19.387

Monochromacy



Original Color
65, 58.314, 14.350

Achromatopsia
64, 0.008, 296.813

Achromatomaly
63, 20.851, 9.380

CSS Examples

Text

The CSS property to change the color of the text to CIELCh 65, 58.265, 14.294 is called "color". The color property can be set on classes, ids or directly on the HTML element.

This example shows how text in the color `rgb(254, 111, 135)` looks like.

```
.text, #text, p{  
    color:rgb(254, 111, 135)  
}
```

If you want to add a text shadow in that color use the text-shadow property, you can generate a text shadow directly with our [CSS Text Shadow Generator](#).

Here you see how black text with a 4 pixel rgb(254, 111, 135) colored shadow looks like.

```
.shadow{ text-shadow: 4px 4px 2px rgb(254, 111, 135) }
```

Border

The CSS property to change the border of an element to CIELCh 65, 58.265, 14.294 is called "border". The border property can be set on classes, ids or directly on the HTML element.

This example shows the color as border, it can be applied via the CSS property "border" or "border-color".

```
.border, #border, table{ border:4px solid rgb(254, 111, 135) }
```

If only the border color should be changed use the property `border-color`.

```
.border{ border-color:rgb(254, 111, 135) }
```

If you want to add a box shadow in that color use:

Here you see how a box with a 4 pixel `rgb(254, 111, 135)` colored shadow looks like.

```
.boxshadow{ -moz-box-shadow:4px 4px 4px  
4px rgb(254, 111, 135); -webkit-box-  
shadow:4px 4px 4px 4px rgb(254, 111, 135);  
box-shadow:4px 4px 4px 4px rgb(254, 111,  
135) }
```

Background

The CSS property to change the background color of an element to CIELCh 65, 58.265, 14.294 is called "background". The background property can be set on classes, ids or directly on the HTML element.

```
.background, #background, body{  
background: rgb(254, 111, 135) }
```

If only the background color should be changed can be used:

```
.background{ background-color: rgb(254,  
111, 135) }
```

This example shows the color as background, it is applied via the CSS property "background".

To optimize and compress your CSS code, you can use our [online CSS compressor and optimizer](#) based on csstidy. If you want to create a linear or radial gradient as background or border, check our [CSS Gradient Generator](#).

Hey! You found this booklet interesting? Support Converting Colors with the new Membership Option!

The pro membership hides all ads, plus gives you double the colors in the color bucket, and more awesome pro features!

[Learn more, Memberships starting at \\$2.50/m!](#)

**Follow me
on Twitter!**

@ConvertingColor