

Converting Colors

CIELCh(66, 6.370, 358.087)

Have a look what the booklet for
CIELCh(66, 6.370, 358.087) contains.

CIELCh(66, 6.198, 359.057)	3
<i>Conversions</i>	4
<i>Details</i>	6
<i>Harmonies</i>	11
<i>Previews</i>	20
<i>Color Blindness Simulation</i>	23
<i>CSS Examples</i>	26

Color

CIELCh(66, 6.198, 359.057)

Conversions

Conversions Part 1

Format	Color
Hex	AC9DA1
RGB	172, 157, 161
RGB Percent	67%, 62%, 63%
CMY	0.3266, 0.3854, 0.3697
CMYK	0.00, 0.09, 0.06, 0.33
HSL	344°, 8%, 64%
HSV	344°, 9%, 67%
XYZ	35.3714, 35.3238, 38.5449
YIQ	161.9410, 7.6560, 4.4240

Conversions

Conversions Part 2

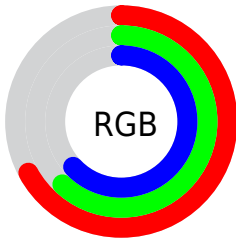
Format	Color
RYB	172, 157, 161
Decimal	11312545
CIELab	66.00, 6.20, -0.10
CIELCh	66, 6.198, 359.057
Yxy	35.3238, 0.3238, 0.3234
Android (android.graphics.Color)	4289502625 (0xFFAC9DA1)
YUV	161.9410, -0.4639, 8.8217
Hunter-Lab	59.4338, 2.2231, 3.1520

Details

The CIELCh color $66, 6.198, 359.057$ is a light color, and the websafe version is hex 999999 . A complement of this color would be $69, 6.026, 177.605$, and the grayscale version is $66, 0.008, 296.813$.

A 20% lighter version of the original color is $86, 5.860, 358.842$, and $46, 6.266, 357.979$ is the 20% darker color. If you saturate the color by 10%, you get $61, 13.580, 0.172$, and if you desaturate by 10%, it is $71, 0.876, 178.712$.

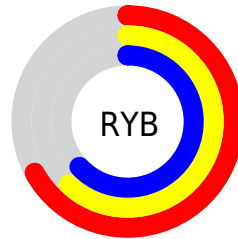
Distribution



Red (67%)

Green (62%)

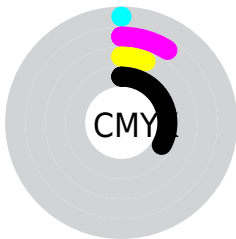
Blue (63%)



Red (67%)

Yellow (62%)

Blue (63%)

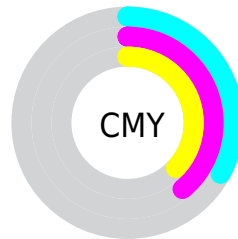


Cyan (0%)

Magenta (9%)

Yellow (6%)

Black (33%)



Cyan (33%)

Magenta (39%)

Yellow (37%)

Brightness & Saturation Gradients

These gradients show how the CIELCh color 66, 6.198, 359.057 changes by changing the brightness by 10 percent. The first figure shows a shift by +10% for each color and the second figure -10%.

Similar to the brightness gradients but the following saturation gradients show a change of the CIELCh color 66, 6.198, 359.057 by changing the saturation by 10% instead.

■ 66, 6.198, 359.057

■ 66, 6.198, 359.057

■ 100, 6.198,
359.057

■ 56, 6.198, 359.057

■ 86, 6.198, 359.057

■ 46, 6.198, 359.057

■ 96, 6.198, 359.057

■ 36, 6.198, 359.057

■ 26, 6.198, 359.057

■ 16, 6.198, 359.057

■ 6, 6.198, 359.057

■ 0, 6.198, 359.057

■ 66, 6.198, 359.057

■ 66, 6.198, 359.057

■ 61, 13.580, 0.172

■ 71, 0.876, 178.712

57, 21.218, 1.435

76, 7.617, 177.457

52, 29.001, 2.935

81, 14.030,
176.707

48, 36.744, 4.761

86, 20.132,
176.048

44, 44.184, 7.027

41, 50.997, 9.880

91, 25.946,
175.455

39, 56.879, 13.480

94, 29.148,
178.221

37, 61.676, 17.947

36, 65.667, 23.099

95, 26.890,
190.983

95, 26.286,
197.797

Harmonies

Complementary

The Complementary color scheme is a pair of colors which are on the opposite of each other on the color wheel.



66, 6.198, 359.057



69, 6.026, 177.605

Rectangle

The Rectangle color scheme consists of four colors that form a rectangle on the color wheel.



66, 6.198, 359.057



66, 6.198, 49.057



66, 6.198, 179.057



66, 6.198, 229.057

Sweetspot

The Sweet Spot groups the original color and five complimentary colors.



66, 6.196, 359.067



87, 2.616, 358.394



66, 9.323, 317.124



46, 1.983, 358.509



95, 0.011, 296.813



47, 0.006, 296.813

Same Dimension

The Same Dimension uses a secret algorithm to generate beautiful new colors.



66, 6.196, 359.067



83, 8.851, 359.222



67, 4.857, 43.012



34, 4.055, 359.129



31, 59.810, 23.057



2, 8.214, 1.929

Inverse Universe

The Inverse Universe completely reimagines the original color for something new.



66, 6.196, 359.067



83, 8.851, 359.222



68, 4.614, 223.888



34, 4.055, 359.129



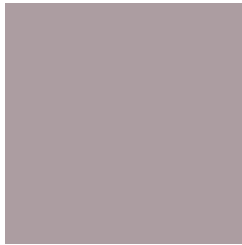
31, 59.810, 23.057



2, 8.214, 1.929

Previews

White Background



This preview shows how the CIELCh color 66, 6.198, 359.057 looks on a white background.

Color Contrast Check

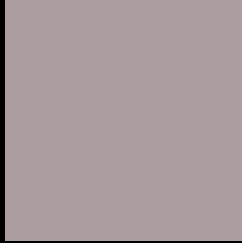
Large Text (above 18pt) WCAG AA × Fail

Any Text WCAG AA × Fail

Large Text (above 18pt) WCAG AAA × Fail

Any Text WCAG AAA × Fail

Black Background



This preview shows how the CIELCh color 66, 6.198, 359.057 looks on a black background.

Color Contrast Check

Large Text (above 18pt) WCAG AA ✓ Pass

Any Text WCAG AA ✓ Pass

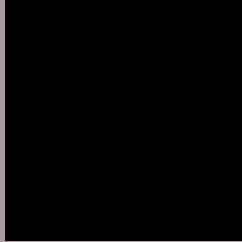
Large Text (above 18pt) WCAG AAA ✓ Pass

Any Text WCAG AAA ✓ Pass

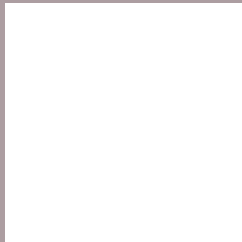
If you want to check with other color combinations, try the [Color Contrast Checker](#).

CIELCh 66, 6.198, 359.057

Background



This preview shows how black text looks on a background with the CIELCh color 66, 6.198, 359.057.



This preview shows how white text looks on a background with the CIELCh color 66, 6.198, 359.057.

Color Blindness Simulation

Color vision deficiency is a very complex topic, and I could not describe the different causes any better than Wikipedia does, so if you want to learn more, you should check out their [article about color blindness](#).

Dichromacy



Original Color


66, 6.198, 359.057

Protanopia

66, 1.605, 335.604

Deuteranopia

66, 8.777, 358.050



Tritanopia
66, 9.296, 334.675

Trichromacy



Original Color
66, 6.198, 359.057

Protanomaly
66, 3.164, 347.929

Deuteranomaly
66, 7.486, 358.439

Tritanomaly
66, 8.211, 342.845

Monochromacy



Original Color
66, 6.198, 359.057

Achromatopsia
67, 0.008, 296.813

Achromatomaly
66, 2.557, 353.857

CSS Examples

Text

The CSS property to change the color of the text to CIELCh 66, 6.198, 359.057 is called "color". The color property can be set on classes, ids or directly on the HTML element.

This example shows how text in the color `rgb(172, 157, 161)` looks like.

```
.text, #text, p{  
    color:rgb(172, 157, 161)  
}
```

If you want to add a text shadow in that color use the text-shadow property, you can generate a text shadow directly with our [CSS Text Shadow Generator](#).

Here you see how black text with a 4 pixel rgb(172, 157, 161) colored shadow looks like.

```
.shadow{ text-shadow: 4px 4px 2px rgb(172, 157, 161) }
```

Border

The CSS property to change the border of an element to CIELCh 66, 6.198, 359.057 is called "border". The border property can be set on classes, ids or directly on the HTML element.

This example shows the color as border, it can be applied via the CSS property "border" or "border-color".

```
.border, #border, table{ border:4px solid rgb(172, 157, 161) }
```

If only the border color should be changed use the property `border-color`.

```
.border{ border-color:rgb(172, 157, 161) }
```

If you want to add a box shadow in that color use:

Here you see how a box with a 4 pixel `rgb(172, 157, 161)` colored shadow looks like.

```
.boxshadow{ -moz-box-shadow:4px 4px 4px 4px rgb(172, 157, 161); -webkit-box-shadow:4px 4px 4px 4px rgb(172, 157, 161); box-shadow:4px 4px 4px 4px rgb(172, 157, 161) }
```

Background

The CSS property to change the background color of an element to CIELCh 66, 6.198, 359.057 is called "background". The background property can be set on classes, ids or directly on the HTML element.

```
.background, #background, body{  
background: rgb(172, 157, 161) }
```

If only the background color should be changed can be used:

```
.background{ background-color: rgb(172,  
157, 161) }
```

This example shows the color as background, it is applied via the CSS property "background".

To optimize and compress your CSS code, you can use our [online CSS compressor and optimizer](#) based on csstidy. If you want to create a linear or radial gradient as background or border, check our [CSS Gradient Generator](#).

Hey! You found this booklet interesting? Support Converting Colors with the new Membership Option!

The pro membership hides all ads, plus gives you double the colors in the color bucket, and more awesome pro features!

[Learn more, Memberships starting at \\$2.50/m!](#)

**Follow me
on Twitter!**

@ConvertingColor