

Converting Colors

CIELCh(66, 68.290, 7.742)

Have a look what the booklet for
CIELCh(66, 68.290, 7.742) contains.

CIELCh(64, 63.423, 4.908)	3
<i>Conversions</i>	4
<i>Details</i>	6
<i>Harmonies</i>	11
<i>Previews</i>	20
<i>Color Blindness Simulation</i>	23
<i>CSS Examples</i>	26

Color

CIELCh(64, 63.423, 4.908)

Conversions

Conversions Part 1

Format	Color
Hex	FF6494
RGB	255, 100, 148
RGB Percent	100%, 39%, 58%
CMY	0.0000, 0.6070, 0.4192
CMYK	0.00, 0.61, 0.42, 0.00
HSL	341°, 100%, 70%
HSV	341°, 61%, 100%
XYZ	51.6495, 32.8017, 31.6639
YIQ	151.8170, 76.9720, 47.7880

Conversions

Conversions Part 2

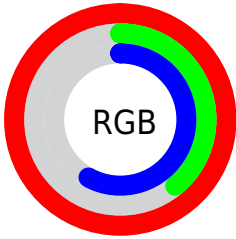
Format	Color
RYB	255, 100, 148
Decimal	16737428
CIELab	64.00, 63.19, 5.43
CIElCh	64, 63.423, 4.908
Yxy	32.8017, 0.4448, 0.2825
Android (android.graphics.Color)	4294927508 (0xFFFF6494)
YUV	151.8170, -1.8818, 90.4915
Hunter-Lab	57.2727, 60.7471, 7.3117

Details

The CIELCh color **64, 63.423, 4.908** is a light color, and the websafe version is hex **FF6699**. A complement of this color would be **91, 53.081, 168.245**, and the grayscale version is **63, 0.008, 296.813**.

A 20% lighter version of the original color is **76, 42.917, 349.946**, and **44, 63.189, 4.551** is the 20% darker color. If you saturate the color by 10%, you get **60, 71.628, 7.692**, and if you desaturate by 10%, it is **69, 53.168, 2.256**.

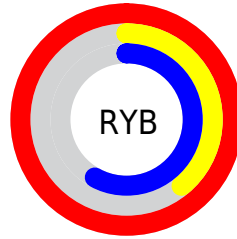
Distribution



Red (100%)

Green (39%)

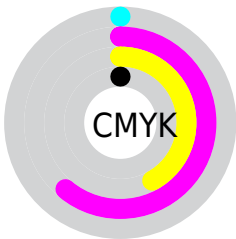
Blue (58%)



Red (100%)

Yellow (39%)

Blue (58%)

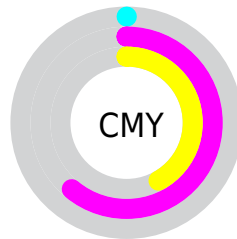


Cyan (0%)

Magenta (61%)

Yellow (42%)

Black (0%)



Cyan (0%)

Magenta (61%)

Yellow (42%)

Brightness & Saturation Gradients

These gradients show how the CIELCh color 64, 63.423, 4.908 changes by changing the brightness by 10 percent. The first figure shows a shift by +10% for each color and the second figure -10%.

Similar to the brightness gradients but the following saturation gradients show a change of the CIELCh color 64, 63.423, 4.908 by changing the saturation by 10% instead.

 64, 63.423, 4.908  64, 63.423, 4.908

 100, 63.423, 4.908  54, 63.423, 4.908

 84, 63.423, 4.908  44, 63.423, 4.908

 94, 63.423, 4.908  34, 63.423, 4.908


 24, 63.423, 4.908

 14, 63.423, 4.908

 4, 63.423, 4.908

 0, 63.423, 4.908

 64, 63.423, 4.908  64, 63.423, 4.908

 60, 71.628, 7.692  69, 53.168, 2.256

■ 57, 78.652, 11.550

■ 74, 42.648, 0.336

■ 55, 83.969, 16.352

■ 80, 31.876,
358.763

■ 54, 87.872, 21.504

■ 86, 21.172,
357.443

■ 93, 10.741,
356.299

■ 100, 0.695,
354.563

■ 100, 0.012,
296.813

Harmonies

Complementary

The Complementary color scheme is a pair of colors which are on the opposite of each other on the color wheel.



64, 63.423, 4.908



91, 53.081, 168.245

Rectangle

The Rectangle color scheme consists of four colors that form a rectangle on the color wheel.



64, 63.423, 4.908



64, 63.423, 54.908



64, 63.423, 184.908



64, 63.423, 234.908

Sweetspot

The Sweet Spot groups the original color and five complimentary colors.



64, 62.995, 4.654



88, 18.321, 357.120



61, 88.748, 317.621



45, 12.797, 357.469



0, 0.000, 0.000



53, 0.007, 296.813

Same Dimension

The Same Dimension uses a secret algorithm to generate beautiful new colors.



64, 62.995, 4.654



59, 73.395, 8.500



68, 59.192, 39.350



50, 5.693, 356.169



40, 70.373, 20.415



10, 31.424, 12.088

Inverse Universe

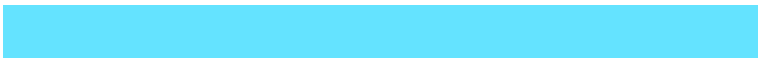
The Inverse Universe completely reimagines the original color for something new.



64, 62.995, 4.654



59, 73.395, 8.500



84, 36.235, 222.056



50, 5.693, 356.169



40, 70.373, 20.415



10, 31.424, 12.088

Previews

White Background



This preview shows how the CIELCh color 64, 63.423, 4.908 looks on a white background.

Color Contrast Check

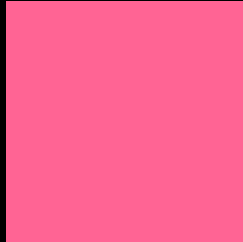
Large Text (above 18pt) WCAG AA × Fail

Any Text WCAG AA × Fail

Large Text (above 18pt) WCAG AAA × Fail

Any Text WCAG AAA × Fail

Black Background



This preview shows how the CIELCh color 64, 63.423, 4.908 looks on a black background.

Color Contrast Check

Large Text (above 18pt) WCAG AA ✓ Pass

Any Text WCAG AA ✓ Pass

Large Text (above 18pt) WCAG AAA ✓ Pass

Any Text WCAG AAA ✓ Pass

If you want to check with other color combinations, try the [Color Contrast Checker](#).

CIELCh 64, 63.423, 4.908

Background



This preview shows how black text looks on a background with the CIELCh color 64, 63.423, 4.908.



This preview shows how white text looks on a background with the CIELCh color 64, 63.423, 4.908.

Color Blindness Simulation

Color vision deficiency is a very complex topic, and I could not describe the different causes any better than Wikipedia does, so if you want to learn more, you should check out their [article about color blindness](#).

Dichromacy



Original Color
64, 63.075, 4.650

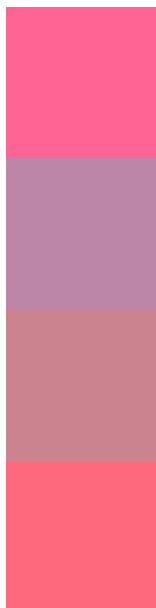
Protanopia
64, 13.990, 285.822

Deuteranopia
64, 11.446, 42.997



Tritanopia
64, 61.386, 23.684

Trichromacy



Original Color
64, 63.075, 4.650

Protanomaly
62, 27.812, 339.516

Deuteranomaly
63, 30.195, 9.130

Tritanomaly
64, 61.078, 17.057

Monochromacy



Original Color
64, 63.075, 4.650

Achromatopsia
63, 0.008, 296.813

Achromatomaly
62, 24.188, 357.693

CSS Examples

Text

The CSS property to change the color of the text to CIELCh 64, 63.423, 4.908 is called "color". The color property can be set on classes, ids or directly on the HTML element.

This example shows how text in the color `rgb(255, 100, 148)` looks like.

```
.text, #text, p{  
    color:rgb(255, 100, 148)  
}
```

If you want to add a text shadow in that color use the text-shadow property, you can generate a text shadow directly with our [CSS Text Shadow Generator](#).

Here you see how black text with a 4 pixel rgb(255, 100, 148) colored shadow looks like.

```
.shadow{ text-shadow: 4px 4px 2px rgb(255, 100, 148) }
```

Border

The CSS property to change the border of an element to CIELCh 64, 63.423, 4.908 is called "border". The border property can be set on classes, ids or directly on the HTML element.

This example shows the color as border, it can be applied via the CSS property "border" or "border-color".

```
.border, #border, table{ border:4px solid rgb(255, 100, 148) }
```

If only the border color should be changed use the property `border-color`.

```
.border{ border-color:rgb(255, 100, 148) }
```

If you want to add a box shadow in that color use:

Here you see how a box with a 4 pixel `rgb(255, 100, 148)` colored shadow looks like.

```
.boxshadow{ -moz-box-shadow:4px 4px 4px 4px rgb(255, 100, 148); -webkit-box-shadow:4px 4px 4px 4px rgb(255, 100, 148); box-shadow:4px 4px 4px 4px rgb(255, 100, 148) }
```

Background

The CSS property to change the background color of an element to CIELCh 64, 63.423, 4.908 is called "background". The background property can be set on classes, ids or directly on the HTML element.

```
.background, #background, body{  
background: rgb(255, 100, 148) }
```

If only the background color should be changed can be used:

```
.background{ background-color: rgb(255,  
100, 148) }
```

This example shows the color as background, it is applied via the CSS property "background".

To optimize and compress your CSS code, you can use our [online CSS compressor and optimizer](#) based on csstidy. If you want to create a linear or radial gradient as background or border, check our [CSS Gradient Generator](#).

Hey! You found this booklet interesting? Support Converting Colors with the new Membership Option!

The pro membership hides all ads, plus gives you double the colors in the color bucket, and more awesome pro features!

[Learn more, Memberships starting at \\$2.50/m!](#)

**Follow me
on Twitter!**

@ConvertingColor