

Converting Colors

CIELCh(66, 76.626, 18.592)

Have a look what the booklet for
CIELCh(66, 76.626, 18.592) contains.

CIELCh(62, 66.964, 15.304)	3
<i>Conversions</i>	4
<i>Details</i>	6
<i>Harmonies</i>	11
<i>Previews</i>	20
<i>Color Blindness Simulation</i>	23
<i>CSS Examples</i>	26

Color

CIELCh(62, 66.964, 15.304)

Conversions

Conversions Part 1

Format	Color
Hex	FF5B7A
RGB	255, 91, 122
RGB Percent	100%, 36%, 48%
CMY	0.0000, 0.6426, 0.5217
CMYK	0.00, 0.64, 0.52, 0.00
HSL	349°, 100%, 68%
HSV	349°, 64%, 100%
XYZ	48.9553, 30.4025, 21.6916
YIQ	143.5700, 87.7930, 44.4090

Conversions

Conversions Part 2

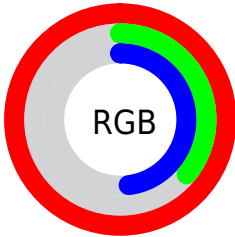
Format	Color
R _Y B	255, 91, 122
Decimal	16735098
CIE Lab	62.00, 64.59, 17.67
CIE LCh	62, 66.964, 15.304
Yxy	30.4025, 0.4845, 0.3009
Android (android.graphics.Color)	4294925178 (0xFFFF5B7A)
YUV	143.5700, -10.6340, 97.7241
Hunter-Lab	55.1385, 61.9907, 15.2722

Details

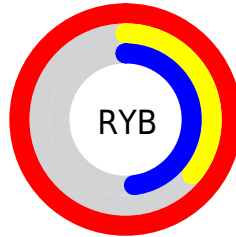
The CIELCh color **62, 66.964, 15.304** is a light color, and the websafe version is hex **FF3366**. The color can be described as light muted rose. A complement of this color would be **91, 49.540, 177.422**, and the grayscale version is **60, 0.008, 296.813**.

A 20% lighter version of the original color is **73, 42.811, 5.879**, and **42, 66.318, 14.899** is the 20% darker color. If you saturate the color by 10%, you get **58, 75.889, 18.776**, and if you desaturate by 10%, it is **66, 56.239, 12.262**.

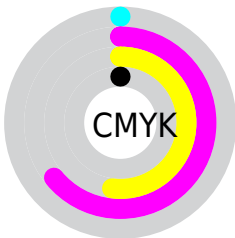
Distribution



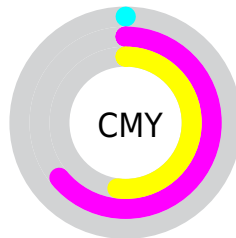
- Red (100%)
- Green (36%)
- Blue (48%)



- Red (100%)
- Yellow (36%)
- Blue (48%)



- Cyan (0%)
- Magenta (64%)
- Yellow (52%)
- Black (0%)



- Cyan (0%)
- Magenta (64%)
- Yellow (52%)


Brightness & Saturation Gradients

These gradients show how the CIELCh color 62, 66.964, 15.304 changes by changing the brightness by 10 percent. The first figure shows a shift by +10% for each color and the second figure -10%.

Similar to the brightness gradients but the following saturation gradients show a change of the CIELCh color 62, 66.964, 15.304 by changing the saturation by 10% instead.

 62, 66.964, 15.304

 62, 66.964, 15.304

 100, 66.964,
15.304

 52, 66.964, 15.304

 82, 66.964, 15.304

 42, 66.964, 15.304

 92, 66.964, 15.304

 32, 66.964, 15.304

 22, 66.964, 15.304

 12, 66.964, 15.304

 2, 66.964, 15.304

 0, 66.964, 15.304

 62, 66.964, 15.304

 62, 66.964, 15.304

 58, 75.889, 18.776

 66, 56.239, 12.262

■ 55, 84.071, 23.264

■ 72, 45.472, 9.997

■ 54, 91.040, 28.461

■ 78, 34.618, 8.193

■ 53, 94.665, 31.473

■ 84, 23.976, 6.729

■ 90, 13.735, 5.509

■ 97, 3.992, 4.391

100, 0.012,
296.813

Harmonies

Complementary

The Complementary color scheme is a pair of colors which are on the opposite of each other on the color wheel.



62, 66.964, 15.304



91, 49.540, 177.422

Rectangle

The Rectangle color scheme consists of four colors that form a rectangle on the color wheel.



62, 66.964, 15.304



62, 66.964, 65.304



62, 66.964, 195.304



62, 66.964, 245.304

Sweetspot

The Sweet Spot groups the original color and five complimentary colors.



62, 66.518, 15.137



87, 18.535, 6.063



62, 93.708, 321.298



45, 12.849, 6.418



0, 0.000, 0.000



53, 0.007, 296.813

Same Dimension

The Same Dimension uses a secret algorithm to generate beautiful new colors.



62, 66.518, 15.137



57, 78.258, 19.923



70, 59.793, 48.830



50, 5.407, 4.986



40, 75.535, 30.471



10, 32.054, 19.316

Inverse Universe

The Inverse Universe completely reimagines the original color for something new.



62, 66.518, 15.137



57, 78.258, 19.923



78, 38.180, 241.947



50, 5.407, 4.986



40, 75.535, 30.471



10, 32.054, 19.316

Previews

White Background



This preview shows how the CIELCh color 62, 66.964, 15.304 looks on a white background.

Color Contrast Check

Large Text (above 18pt) WCAG AA × Fail

Any Text WCAG AA × Fail

Large Text (above 18pt) WCAG AAA × Fail

Any Text WCAG AAA × Fail

Black Background



This preview shows how the CIELCh color 62, 66.964, 15.304 looks on a black background.

Color Contrast Check

Large Text (above 18pt) WCAG AA ✓ Pass

Any Text WCAG AA ✓ Pass

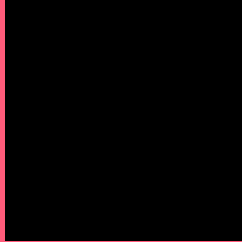
Large Text (above 18pt) WCAG AAA ✓ Pass

Any Text WCAG AAA ✓ Pass

If you want to check with other color combinations, try the [Color Contrast Checker](#).

CIELCh 62, 66.964, 15.304

Background



This preview shows how black text looks on a background with the CIELCh color 62, 66.964, 15.304.



This preview shows how white text looks on a background with the CIELCh color 62, 66.964, 15.304.

Color Blindness Simulation

Color vision deficiency is a very complex topic, and I could not describe the different causes any better than Wikipedia does, so if you want to learn more, you should check out their [article about color blindness](#).

Dichromacy



Original Color

62, 66.564, 15.087

Protanopia

62, 1.626, 335.624

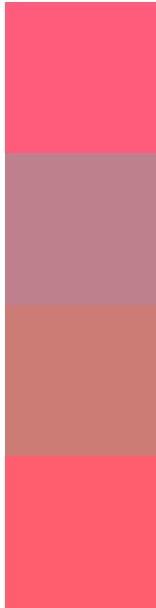
Deuteranopia

62, 21.755, 67.719



Tritanopia
62, 67.568, 25.811

Trichromacy



Original Color
62, 66.564, 15.087

Protanomaly
60, 25.479, 7.142

Deuteranomaly
60, 35.208, 29.398

Tritanomaly
62, 66.581, 21.898

Monochromacy



Original Color
62, 66.564, 15.087

Achromatopsia
60, 0.008, 296.813

Achromatomaly
59, 24.708, 7.878

CSS Examples

Text

The CSS property to change the color of the text to CIELCh 62, 66.964, 15.304 is called "color". The color property can be set on classes, ids or directly on the HTML element.

This example shows how text in the color `rgb(255, 91, 122)` looks like.

```
.text, #text, p{  
    color:rgb(255, 91, 122)  
}
```

If you want to add a text shadow in that color use the text-shadow property, you can generate a text shadow directly with our [CSS Text Shadow Generator](#).

Here you see how black text with a 4 pixel rgb(255, 91, 122) colored shadow looks like.

```
.shadow{ text-shadow: 4px 4px 2px rgb(255, 91, 122) }
```

Border

The CSS property to change the border of an element to CIELCh 62, 66.964, 15.304 is called "border". The border property can be set on classes, ids or directly on the HTML element.

This example shows the color as border, it can be applied via the CSS property "border" or "border-color".

```
.border, #border, table{ border:4px solid rgb(255, 91, 122) }
```

If only the border color should be changed use the property `border-color`.

```
.border{ border-color:rgb(255, 91, 122) }
```

If you want to add a box shadow in that color use:

Here you see how a box with a 4 pixel `rgb(255, 91, 122)` colored shadow looks like.

```
.boxshadow{ -moz-box-shadow:4px 4px 4px  
4px rgb(255, 91, 122); -webkit-box-  
shadow:4px 4px 4px 4px rgb(255, 91, 122);  
box-shadow:4px 4px 4px 4px rgb(255, 91,  
122) }
```

Background

The CSS property to change the background color of an element to CIELCh 62, 66.964, 15.304 is called "background". The background property can be set on classes, ids or directly on the HTML element.

```
.background, #background, body{  
background: rgb(255, 91, 122) }
```

If only the background color should be changed can be used:

```
.background{ background-color: rgb(255, 91,  
122) }
```

This example shows the color as background, it is applied via the CSS property "background".

To optimize and compress your CSS code, you can use our [online CSS compressor and optimizer](#) based on csstidy. If you want to create a linear or radial gradient as background or border, check our [CSS Gradient Generator](#).

Hey! You found this booklet interesting? Support Converting Colors with the new Membership Option!

The pro membership hides all ads, plus gives you double the colors in the color bucket, and more awesome pro features!

[Learn more, Memberships starting at \\$2.50/m!](#)

**Follow me
on Twitter!**

@ConvertingColor