

Converting Colors

CIELCh(66, 86.844, 17.890)

Have a look what the booklet for
CIELCh(66, 86.844, 17.890) contains.

CIELCh(59, 73.573, 12.212)	3
<i>Conversions</i>	4
<i>Details</i>	6
<i>Harmonies</i>	11
<i>Previews</i>	20
<i>Color Blindness Simulation</i>	23
<i>CSS Examples</i>	26

Color

CIELCh(59, 73.573, 12.212)

Conversions

Conversions Part 1

Format	Color
Hex	FF4676
RGB	255, 70, 118
RGB Percent	100%, 27%, 46%
CMY	0.0000, 0.7269, 0.5354
CMYK	0.00, 0.73, 0.54, 0.00
HSL	344°, 100%, 64%
HSV	344°, 73%, 100%
XYZ	46.9274, 27.0277, 20.0307
YIQ	130.7870, 94.8520, 54.1480

Conversions

Conversions Part 2

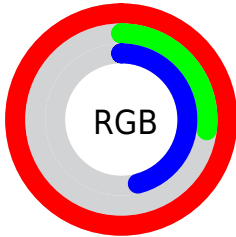
Format	Color
R_{YB}	255, 70, 118
Decimal	16729718
CIE _{Lab}	59.00, 71.91, 15.56
CIE _{LCh}	59, 73.573, 12.212
Yxy	27.0277, 0.4993, 0.2876
Android (android.graphics.Color)	4294919798 (0xFFFF4676)
YUV	130.7870, -6.3040, 108.9348
Hunter-Lab	51.9882, 70.1445, 13.5478

Details

The CIELCh color **59, 73.573, 12.212** is a dark color, and the websafe version is hex **FF3366**. The color can be described as middle washed rose. A complement of this color would be **90, 57.680, 169.761**, and the grayscale version is **55, 0.007, 296.813**.

A 20% lighter version of the original color is **70, 51.093, 1.445**, and **41, 69.113, 15.247** is the 20% darker color. If you saturate the color by 10%, you get **56, 80.642, 16.337**, and if you desaturate by 10%, it is **63, 64.633, 8.767**.

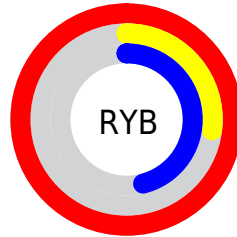
Distribution



Red (100%)

Green (27%)

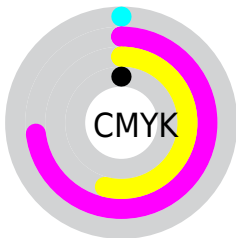
Blue (46%)



Red (100%)

Yellow (27%)

Blue (46%)

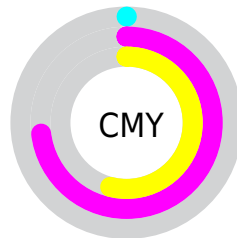


Cyan (0%)

Magenta (73%)

Yellow (54%)

Black (0%)



Cyan (0%)

Magenta (73%)

Yellow (54%)


Brightness & Saturation Gradients

These gradients show how the CIELCh color 59, 73.573, 12.212 changes by changing the brightness by 10 percent. The first figure shows a shift by +10% for each color and the second figure -10%.

Similar to the brightness gradients but the following saturation gradients show a change of the CIELCh color 59, 73.573, 12.212 by changing the saturation by 10% instead.

 59, 73.573, 12.212

 59, 73.573, 12.212

 100, 73.573,
12.212

 49, 73.573, 12.212

 79, 73.573, 12.212

 39, 73.573, 12.212

 89, 73.573, 12.212

 29, 73.573, 12.212

 99, 73.573, 12.212

 19, 73.573, 12.212

 9, 73.573, 12.212

 0, 73.573, 12.212

 59, 73.573, 12.212

 59, 73.573, 12.212

 56, 80.642, 16.337

 63, 64.633, 8.767

 54, 86.446, 21.468

 67, 54.769, 6.131

■ 54, 90.133, 25.569

■ 73, 44.248, 4.037

■ 79, 33.504, 2.344

■ 85, 22.859, 0.943

■ 92, 12.519,
359.750

■ 98, 2.596, 358.566

100, 0.012,
296.813

Harmonies

Complementary

The Complementary color scheme is a pair of colors which are on the opposite of each other on the color wheel.



59, 73.573, 12.212



90, 57.680, 169.761

Rectangle

The Rectangle color scheme consists of four colors that form a rectangle on the color wheel.



59, 73.573, 12.212



59, 73.573, 62.212



59, 73.573, 192.212



59, 73.573, 242.212

Sweetspot

The Sweet Spot groups the original color and five complimentary colors.



59, 73.371, 12.117



85, 22.134, 0.855



57, 102.816, 319.282



44, 14.950, 1.207



0, 0.000, 0.000



53, 0.007, 296.813

Same Dimension

The Same Dimension uses a secret algorithm to generate beautiful new colors.



59, 73.371, 12.117



55, 83.308, 18.443



65, 71.635, 43.921



50, 5.569, 359.398



40, 72.060, 24.484



10, 31.630, 15.168

Inverse Universe

The Inverse Universe completely reimagines the original color for something new.



59, 73.371, 12.117



55, 83.308, 18.443



79, 39.965, 233.190



50, 5.569, 359.398



40, 72.060, 24.484



10, 31.630, 15.168

Previews

White Background



This preview shows how the CIELCh color 59, 73.573, 12.212 looks on a white background.

Color Contrast Check

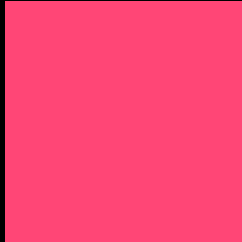
Large Text (above 18pt) WCAG AA ✓ Pass

Any Text WCAG AA ✗ Fail

Large Text (above 18pt) WCAG AAA ✗ Fail

Any Text WCAG AAA ✗ Fail

Black Background



This preview shows how the CIELCh color 59, 73.573, 12.212 looks on a black background.

Color Contrast Check

Large Text (above 18pt) WCAG AA ✓ Pass

Any Text WCAG AA ✓ Pass

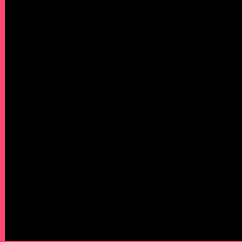
Large Text (above 18pt) WCAG AAA ✓ Pass

Any Text WCAG AAA × Fail

If you want to check with other color combinations, try the [Color Contrast Checker](#).

CIELCh 59, 73.573, 12.212

Background



This preview shows how black text looks on a background with the CIELCh color 59, 73.573, 12.212.



This preview shows how white text looks on a background with the CIELCh color 59, 73.573, 12.212.

Color Blindness Simulation

Color vision deficiency is a very complex topic, and I could not describe the different causes any better than Wikipedia does, so if you want to learn more, you should check out their [article about color blindness](#).

Dichromacy



Original Color

59, 73.292, 12.387

Protanopia

59, 7.940, 291.088

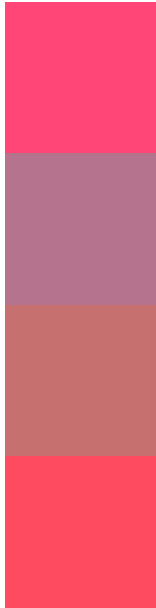
Deuteranopia

59, 20.500, 67.557



Tritanopia
59, 75.486, 28.936

Trichromacy



Original Color
59, 73.292, 12.387

Protanomaly
56, 30.385, 353.184

Deuteranomaly
57, 37.471, 23.902

Tritanomaly
59, 74.082, 23.136

Monochromacy



Original Color
59, 73.292, 12.387

Achromatopsia
55, 0.007, 296.813

Achromatomaly
54, 28.969, 3.779

CSS Examples

Text

The CSS property to change the color of the text to CIELCh 59, 73.573, 12.212 is called "color". The color property can be set on classes, ids or directly on the HTML element.

This example shows how text in the color `rgb(255, 70, 118)` looks like.

```
.text, #text, p{  
    color:rgb(255, 70, 118)  
}
```

If you want to add a text shadow in that color use the text-shadow property, you can generate a text shadow directly with our [CSS Text Shadow Generator](#).

Here you see how black text with a 4 pixel rgb(255, 70, 118) colored shadow looks like.

```
.shadow{ text-shadow: 4px 4px 2px rgb(255, 70, 118) }
```

Border

The CSS property to change the border of an element to CIELCh 59, 73.573, 12.212 is called "border". The border property can be set on classes, ids or directly on the HTML element.

This example shows the color as border, it can be applied via the CSS property "border" or "border-color".

```
.border, #border, table{ border:4px solid rgb(255, 70, 118) }
```

If only the border color should be changed use the property `border-color`.

```
.border{ border-color:rgb(255, 70, 118) }
```

If you want to add a box shadow in that color use:

Here you see how a box with a 4 pixel `rgb(255, 70, 118)` colored shadow looks like.

```
.boxshadow{ -moz-box-shadow:4px 4px 4px  
4px rgb(255, 70, 118); -webkit-box-  
shadow:4px 4px 4px 4px rgb(255, 70, 118);  
box-shadow:4px 4px 4px 4px rgb(255, 70,  
118) }
```

Background

The CSS property to change the background color of an element to CIELCh 59, 73.573, 12.212 is called "background". The background property can be set on classes, ids or directly on the HTML element.

```
.background, #background, body{  
background: rgb(255, 70, 118) }
```

If only the background color should be changed can be used:

```
.background{ background-color: rgb(255, 70,  
118) }
```

This example shows the color as background, it is applied via the CSS property "background".

To optimize and compress your CSS code, you can use our [online CSS compressor and optimizer](#) based on csstidy. If you want to create a linear or radial gradient as background or border, check our [CSS Gradient Generator](#).

Hey! You found this booklet interesting? Support Converting Colors with the new Membership Option!

The pro membership hides all ads, plus gives you double the colors in the color bucket, and more awesome pro features!

[Learn more, Memberships starting at \\$2.50/m!](#)

**Follow me
on Twitter!**

@ConvertingColor