

Converting Colors

CIELCh(66, 9.831, 28.414)

Have a look what the booklet for
CIELCh(66, 9.831, 28.414) contains.

CIELCh(66, 9.644, 30.057)	3
<i>Conversions</i>	4
<i>Details</i>	6
<i>Harmonies</i>	11
<i>Previews</i>	20
<i>Color Blindness Simulation</i>	23
<i>CSS Examples</i>	26

Color

CIELCh(66, 9.644, 30.057)

Conversions

Conversions Part 1

Format	Color
Hex	B39B98
RGB	179, 155, 152
RGB Percent	70%, 61%, 60%
CMY	0.2978, 0.3919, 0.4037
CMYK	0.00, 0.13, 0.15, 0.30
HSL	7°, 15%, 65%
HSV	7°, 15%, 70%
XYZ	36.0095, 35.3238, 34.6526
YIQ	161.8340, 15.2670, 4.1550

Conversions

Conversions Part 2

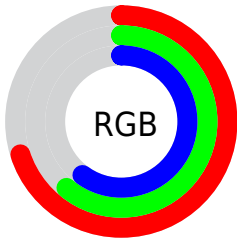
Format	Color
RYB	179, 155, 152
Decimal	11770776
CIELab	66.00, 8.35, 4.83
CIELCh	66, 9.644, 30.057
Yxy	35.3238, 0.3398, 0.3333
Android (android.graphics.Color)	4289960856 (0xFFB39B98)
YUV	161.8340, -4.8482, 15.0546
Hunter-Lab	59.4338, 4.1397, 7.0350

Details

The CIELCh color **66, 9.644, 30.057** is a light color, and the websafe version is hex **999999**. A complement of this color would be **70, 8.734, 209.658**, and the grayscale version is **67, 0.008, 296.813**.

A 20% lighter version of the original color is **86, 9.804, 29.223**, and **46, 9.617, 31.069** is the 20% darker color. If you saturate the color by 10%, you get **62, 16.711, 30.521**, and if you desaturate by 10%, it is **71, 3.118, 29.682**.

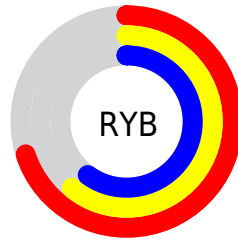
Distribution



Red (70%)

Green (61%)

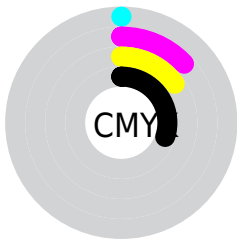
Blue (60%)



Red (70%)

Yellow (61%)

Blue (60%)

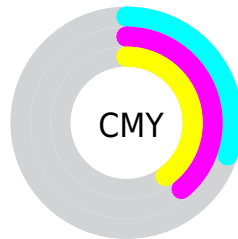


Cyan (0%)

Magenta (13%)

Yellow (15%)

Black (30%)



Cyan (30%)

Magenta (39%)


Yellow (40%)

Brightness & Saturation Gradients

These gradients show how the CIELCh color 66, 9.644, 30.057 changes by changing the brightness by 10 percent. The first figure shows a shift by +10% for each color and the second figure -10%.

Similar to the brightness gradients but the following saturation gradients show a change of the CIELCh color 66, 9.644, 30.057 by changing the saturation by 10% instead.

 66, 9.644, 30.057  66, 9.644, 30.057

 100, 9.644, 30.057  56, 9.644, 30.057

 86, 9.644, 30.057  46, 9.644, 30.057

 96, 9.644, 30.057  36, 9.644, 30.057

 26, 9.644, 30.057

 16, 9.644, 30.057

 6, 9.644, 30.057

 0, 9.644, 30.057

 66, 9.644, 30.057  66, 9.644, 30.057

 62, 16.711, 30.521  71, 3.118, 29.682

57, 24.344, 31.161

75, 2.903, 209.862

53, 32.532, 32.054

80, 8.469, 209.674

49, 41.214, 33.262

85, 13.628,
209.643

46, 50.255, 34.832

89, 18.428,
209.674

43, 59.395, 36.748

40, 68.123, 38.818

94, 22.855,
203.810

39, 75.338, 40.460

95, 24.251,
197.922

38, 78.444, 41.404

Harmonies

Complementary

The Complementary color scheme is a pair of colors which are on the opposite of each other on the color wheel.



66, 9.644, 30.057



70, 8.734, 209.658

Rectangle

The Rectangle color scheme consists of four colors that form a rectangle on the color wheel.



66, 9.644, 30.057



66, 9.644, 80.057



66, 9.644, 210.057



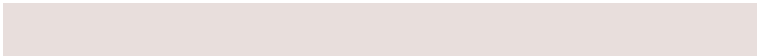
66, 9.644, 260.057

Sweetspot

The Sweet Spot groups the original color and five complimentary colors.



66, 9.643, 30.069



89, 3.789, 29.682



66, 16.877, 328.120



47, 2.613, 29.717



96, 0.011, 296.813



49, 0.007, 296.813

Same Dimension

The Same Dimension uses a secret algorithm to generate beautiful new colors.



66, 9.643, 30.069



82, 14.400, 30.198



69, 9.822, 83.492



35, 3.528, 29.859



32, 69.324, 41.313



2, 8.432, 27.200

Inverse Universe

The Inverse Universe completely reimagines the original color for something new.



70, 8.734, 209.658



88, 12.746, 209.644



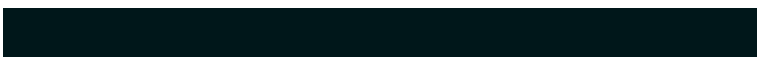
67, 9.674, 267.526



37, 3.324, 209.725



52, 30.276, 216.148



6, 7.912, 215.151

Previews

White Background



This preview shows how the CIELCh color 66, 9.644, 30.057 looks on a white background.

Color Contrast Check

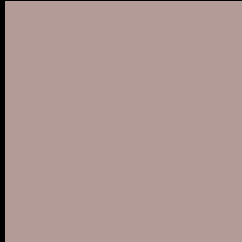
Large Text (above 18pt) WCAG AA × Fail

Any Text WCAG AA × Fail

Large Text (above 18pt) WCAG AAA × Fail

Any Text WCAG AAA × Fail

Black Background



This preview shows how the CIE LCh color 66, 9.644, 30.057 looks on a black background.

Color Contrast Check

Large Text (above 18pt) WCAG AA ✓ Pass

Any Text WCAG AA ✓ Pass

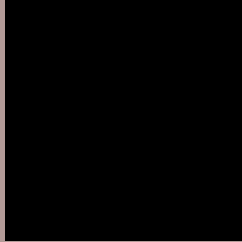
Large Text (above 18pt) WCAG AAA ✓ Pass

Any Text WCAG AAA ✓ Pass

If you want to check with other color combinations, try the [Color Contrast Checker](#).

CIELCh 66, 9.644, 30.057

Background



This preview shows how black text looks on a background with the CIELCh color 66, 9.644, 30.057.



This preview shows how white text looks on a background with the CIELCh color 66, 9.644, 30.057.

Color Blindness Simulation

Color vision deficiency is a very complex topic, and I could not describe the different causes any better than Wikipedia does, so if you want to learn more, you should check out their [article about color blindness](#).

Dichromacy



Original Color

66, 9.644, 30.057

Protanopia

66, 3.356, 74.604

Deuteranopia

66, 9.644, 30.057



Tritanopia
66, 12.651, 349.065

Trichromacy



Original Color
66, 9.644, 30.057

Protanomaly
66, 5.172, 44.934

Deuteranomaly
66, 9.644, 30.057

Tritanomaly
66, 10.634, 2.297

Monochromacy



Original Color
66, 9.644, 30.057

Achromatopsia
67, 0.008, 296.813

Achromatomaly
66, 3.514, 28.610

CSS Examples

Text

The CSS property to change the color of the text to CIELCh 66, 9.644, 30.057 is called "color". The color property can be set on classes, ids or directly on the HTML element.

This example shows how text in the color `rgb(179, 155, 152)` looks like.

```
.text, #text, p{  
    color:rgb(179, 155, 152)  
}
```

If you want to add a text shadow in that color use the text-shadow property, you can generate a text shadow directly with our [CSS Text Shadow Generator](#).

Here you see how black text with a 4 pixel rgb(179, 155, 152) colored shadow looks like.

```
.shadow{ text-shadow: 4px 4px 2px rgb(179, 155, 152) }
```

Border

The CSS property to change the border of an element to CIELCh 66, 9.644, 30.057 is called "border". The border property can be set on classes, ids or directly on the HTML element.

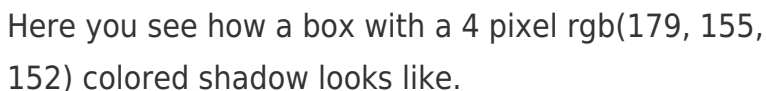
This example shows the color as border, it can be applied via the CSS property "border" or "border-color".

```
.border, #border, table{ border:4px solid rgb(179, 155, 152) }
```

If only the border color should be changed use the property `border-color`.

```
.border{ border-color:rgb(179, 155, 152) }
```

If you want to add a box shadow in that color use:



Here you see how a box with a 4 pixel `rgb(179, 155, 152)` colored shadow looks like.

```
.boxshadow{ -moz-box-shadow:4px 4px 4px 4px rgb(179, 155, 152); -webkit-box-shadow:4px 4px 4px 4px rgb(179, 155, 152); box-shadow:4px 4px 4px 4px rgb(179, 155, 152) }
```

Background

The CSS property to change the background color of an element to CIELCh 66, 9.644, 30.057 is called "background". The background property can be set on classes, ids or directly on the HTML element.

```
.background, #background, body{  
background: rgb(179, 155, 152) }
```

If only the background color should be changed can be used:

```
.background{ background-color: rgb(179,  
155, 152) }
```

This example shows the color as background, it is applied via the CSS property "background".

To optimize and compress your CSS code, you can use our [online CSS compressor and optimizer](#) based on csstidy. If you want to create a linear or radial gradient as background or border, check our [CSS Gradient Generator](#).

Hey! You found this booklet interesting? Support Converting Colors with the new Membership Option!

The pro membership hides all ads, plus gives you double the colors in the color bucket, and more awesome pro features!

[Learn more, Memberships starting at \\$2.50/m!](#)

**Follow me
on Twitter!**

@ConvertingColor