

Converting Colors

CIELCh(67, 11.813, 17.820)

Have a look what the booklet for
CIELCh(67, 11.813, 17.820) contains.

CIELCh(67, 11.813, 17.820)	3
<i>Conversions</i>	4
<i>Details</i>	6
<i>Harmonies</i>	11
<i>Previews</i>	20
<i>Color Blindness Simulation</i>	23
<i>CSS Examples</i>	26

Color

CIELCh(67, 11.813, 17.820)

Conversions

Conversions Part 1

Format	Color
Hex	BA9C9D
RGB	186, 156, 157
RGB Percent	73%, 61%, 62%
CMY	0.2707, 0.3884, 0.3845
CMYK	0.00, 0.16, 0.16, 0.27
HSL	358°, 18%, 67%
HSV	358°, 16%, 73%
XYZ	38.2054, 36.6320, 36.9389
YIQ	165.0840, 17.5590, 6.6710

Conversions

Conversions Part 2

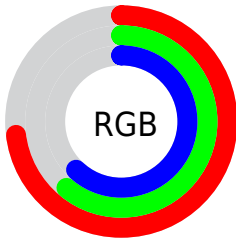
Format	Color
RYB	186, 156, 157
Decimal	12229789
CIELab	67.00, 11.25, 3.62
CIELCh	67, 11.813, 17.820
Yxy	36.6320, 0.3418, 0.3277
Android (android.graphics.Color)	4290419869 (0xFFBA9C9D)
YUV	165.0840, -3.9854, 18.3433
Hunter-Lab	60.5244, 6.7587, 6.1815

Details

The CIELCh color **67, 11.813, 17.820** is a light color, and the websafe version is hex **CC9999**. A complement of this color would be **73, 10.720, 195.691**, and the grayscale version is **68, 0.008, 296.813**.

A 20% lighter version of the original color is **87, 11.486, 17.623**, and **47, 11.477, 17.894** is the 20% darker color. If you saturate the color by 10%, you get **62, 19.837, 18.871**, and if you desaturate by 10%, it is **72, 4.326, 16.942**.

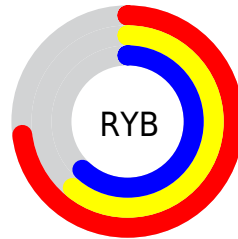
Distribution



Red (73%)

Green (61%)

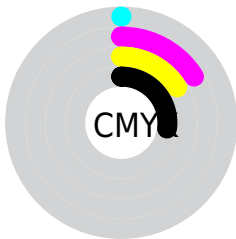
Blue (62%)



Red (73%)

Yellow (61%)

Blue (62%)

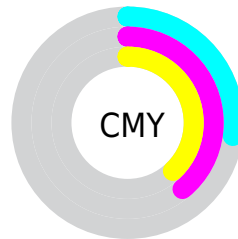


Cyan (0%)

Magenta (16%)

Yellow (16%)

Black (27%)



Cyan (27%)

Magenta (39%)

Yellow (38%)

Brightness & Saturation Gradients

These gradients show how the CIELCh color 67, 11.813, 17.820 changes by changing the brightness by 10 percent. The first figure shows a shift by +10% for each color and the second figure -10%.

Similar to the brightness gradients but the following saturation gradients show a change of the CIELCh color 67, 11.813, 17.820 by changing the saturation by 10% instead.

■ 67, 11.813, 17.820

■ 67, 11.813, 17.820

■ 100, 11.813,
17.820

■ 57, 11.813, 17.820

■ 87, 11.813, 17.820

■ 47, 11.813, 17.820

■ 97, 11.813, 17.820

■ 37, 11.813, 17.820

■ 27, 11.813, 17.820

■ 17, 11.813, 17.820

■ 7, 11.813, 17.820

■ 0, 11.813, 17.820

■ 67, 11.813, 17.820

■ 67, 11.813, 17.820

■ 62, 19.837, 18.871

■ 72, 4.326, 16.942

57, 28.373, 20.188

78, 2.629, 196.608

52, 37.322, 21.879

83, 9.088, 195.939

48, 46.511, 24.057

88, 15.096,
195.480

45, 55.682, 26.831

94, 20.701,
195.106

42, 64.511, 30.237

40, 72.570, 34.088

96, 22.280,
198.045

39, 79.026, 37.677

39, 81.022, 38.674

Harmonies

Complementary

The Complementary color scheme is a pair of colors which are on the opposite of each other on the color wheel.



67, 11.813, 17.820



73, 10.720, 195.691

Rectangle

The Rectangle color scheme consists of four colors that form a rectangle on the color wheel.



67, 11.813, 17.820



67, 11.813, 67.820



67, 11.813, 197.820



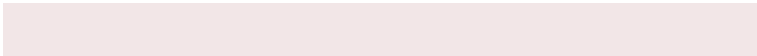
67, 11.813, 247.820

Sweetspot

The Sweet Spot groups the original color and five complimentary colors.



67, 11.811, 17.829



92, 4.358, 16.842



68, 19.742, 324.379



49, 3.005, 16.910



98, 0.011, 296.813



51, 0.007, 296.813

Same Dimension

The Same Dimension uses a secret algorithm to generate beautiful new colors.



67, 11.811, 17.829



83, 17.450, 18.136



71, 9.904, 69.811



36, 4.004, 17.223



32, 70.613, 38.256



2, 10.650, 17.382

Inverse Universe

The Inverse Universe completely reimagines the original color for something new.



67, 11.811, 17.829



83, 17.450, 18.136



70, 9.424, 253.895



36, 4.004, 17.223



32, 70.613, 38.256



2, 10.650, 17.382

Previews

White Background



This preview shows how the CIELCh color 67, 11.813, 17.820 looks on a white background.

Color Contrast Check

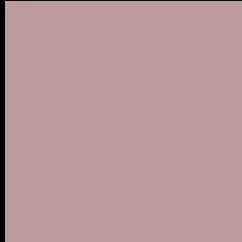
Large Text (above 18pt) WCAG AA × Fail

Any Text WCAG AA × Fail

Large Text (above 18pt) WCAG AAA × Fail

Any Text WCAG AAA × Fail

Black Background



This preview shows how the CIELCh color 67, 11.813, 17.820 looks on a black background.

Color Contrast Check

Large Text (above 18pt) WCAG AA ✓ Pass

Any Text WCAG AA ✓ Pass

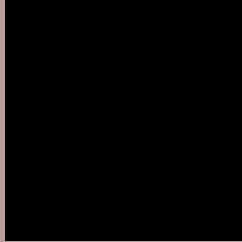
Large Text (above 18pt) WCAG AAA ✓ Pass

Any Text WCAG AAA ✓ Pass

If you want to check with other color combinations, try the [Color Contrast Checker](#).

CIELCh 67, 11.813, 17.820

Background



This preview shows how black text looks on a background with the CIELCh color 67, 11.813, 17.820.



This preview shows how white text looks on a background with the CIELCh color 67, 11.813, 17.820.

Color Blindness Simulation

Color vision deficiency is a very complex topic, and I could not describe the different causes any better than Wikipedia does, so if you want to learn more, you should check out their [article about color blindness](#).

Dichromacy



Original Color

67, 11.813, 17.820

Protanopia

67, 1.986, 35.424

Deuteranopia

67, 9.032, 23.653



Tritanopia
67, 14.567, 351.437

Trichromacy



Original Color
67, 11.813, 17.820

Protanomaly
67, 5.415, 19.811

Deuteranomaly
67, 10.206, 20.304

Tritanomaly
67, 13.171, 1.194

Monochromacy



Original Color
67, 11.813, 17.820

Achromatopsia
68, 0.008, 296.813

Achromatomaly
68, 4.231, 19.674

CSS Examples

Text

The CSS property to change the color of the text to CIELCh 67, 11.813, 17.820 is called "color". The color property can be set on classes, ids or directly on the HTML element.

This example shows how text in the color `rgb(186, 156, 157)` looks like.

```
.text, #text, p{  
    color:rgb(186, 156, 157)  
}
```

If you want to add a text shadow in that color use the text-shadow property, you can generate a text shadow directly with our [CSS Text Shadow Generator](#).

Here you see how black text with a 4 pixel rgb(186, 156, 157) colored shadow looks like.

```
.shadow{ text-shadow: 4px 4px 2px rgb(186, 156, 157) }
```

Border

The CSS property to change the border of an element to CIELCh 67, 11.813, 17.820 is called "border". The border property can be set on classes, ids or directly on the HTML element.

This example shows the color as border, it can be applied via the CSS property "border" or "border-color".

```
.border, #border, table{ border:4px solid rgb(186, 156, 157) }
```

If only the border color should be changed use the property `border-color`.

```
.border{ border-color:rgb(186, 156, 157) }
```

If you want to add a box shadow in that color use:

Here you see how a box with a 4 pixel `rgb(186, 156, 157)` colored shadow looks like.

```
.boxshadow{ -moz-box-shadow:4px 4px 4px  
4px rgb(186, 156, 157); -webkit-box-  
shadow:4px 4px 4px 4px rgb(186, 156, 157);  
box-shadow:4px 4px 4px 4px rgb(186, 156,  
157) }
```

Background

The CSS property to change the background color of an element to CIELCh 67, 11.813, 17.820 is called "background". The background property can be set on classes, ids or directly on the HTML element.

```
.background, #background, body{  
background: rgb(186, 156, 157) }
```

If only the background color should be changed can be used:

```
.background{ background-color: rgb(186,  
156, 157) }
```

This example shows the color as background, it is applied via the CSS property "background".

To optimize and compress your CSS code, you can use our [online CSS compressor and optimizer](#) based on csstidy. If you want to create a linear or radial gradient as background or border, check our [CSS Gradient Generator](#).

Hey! You found this booklet interesting? Support Converting Colors with the new Membership Option!

The pro membership hides all ads, plus gives you double the colors in the color bucket, and more awesome pro features!

[Learn more, Memberships starting at \\$2.50/m!](#)

**Follow me
on Twitter!**

@ConvertingColor