

Converting Colors

CIELCh(67, 14.481, 33.702)

Have a look what the booklet for
CIELCh(67, 14.481, 33.702) contains.

CIELCh(67, 14.481, 33.702)	3
<i>Conversions</i>	4
<i>Details</i>	6
<i>Harmonies</i>	11
<i>Previews</i>	20
<i>Color Blindness Simulation</i>	23
<i>CSS Examples</i>	26

Color

CIELCh(67, 14.481, 33.702)

Conversions

Conversions Part 1	
Format	Color
Hex	BE9B95
RGB	190, 155, 149
RGB Percent	75%, 61%, 58%
CMY	0.2543, 0.3916, 0.4151
CMYK	0.00, 0.18, 0.22, 0.25
HSL	9°, 24%, 67%
HSV	9°, 22%, 75%
XYZ	38.4547, 36.6320, 33.5375
YIQ	164.7810, 22.7860, 5.5540

Conversions

Conversions Part 2

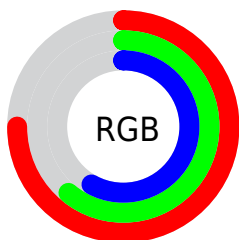
Format	Color
RYB	190, 156, 149
Decimal	12491669
CIELab	67.00, 12.05, 8.04
CIELCh	67, 14.481, 33.702
Yxy	36.6320, 0.3540, 0.3372
Android (android.graphics.Color)	4290681749 (0xFFBE9B95)
YUV	164.7810, -7.7800, 22.1171
Hunter-Lab	60.5244, 7.4941, 9.5135

Details

The CIELCh color **67, 14.481, 33.702** is a light color, and the websafe version is hex **CC9999**. A complement of this color would be **73, 12.513, 213.724**, and the grayscale version is **68, 0.008, 296.813**.

A 20% lighter version of the original color is **87, 14.448, 34.892**, and **47, 14.490, 35.001** is the 20% darker color. If you saturate the color by 10%, you get **63, 22.094, 34.090**, and if you desaturate by 10%, it is **72, 7.450, 33.474**.

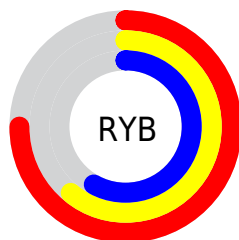
Distribution



Red (75%)

Green (61%)

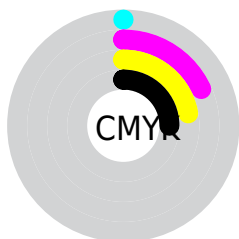
Blue (58%)



Red (75%)

Yellow (61%)

Blue (58%)

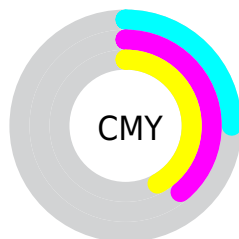


Cyan (0%)

Magenta (18%)

Yellow (22%)

Black (25%)



Cyan (25%)

Magenta (39%)

Yellow (42%)


Brightness & Saturation Gradients

These gradients show how the CIELCh color 67, 14.481, 33.702 changes by changing the brightness by 10 percent. The first figure shows a shift by +10% for each color and the second figure -10%.

Similar to the brightness gradients but the following saturation gradients show a change of the CIELCh color 67, 14.481, 33.702 by changing the saturation by 10% instead.

 67, 14.481, 33.702

 67, 14.481, 33.702

 100, 14.481,
33.702

 57, 14.481, 33.702

 87, 14.481, 33.702

 47, 14.481, 33.702

 97, 14.481, 33.702

 37, 14.481, 33.702

 27, 14.481, 33.702

 17, 14.481, 33.702

 7, 14.481, 33.702

 0, 14.481, 33.702

 67, 14.481, 33.702

 67, 14.481, 33.702

 63, 22.094, 34.090

 72, 7.450, 33.474


 58, 30.305, 34.674

 76, 0.968, 32.918


 54, 39.087, 35.517

 81, 5.016, 213.592

 50, 48.348, 36.661


 86, 10.552,
213.623

 47, 57.888, 38.108


 91, 15.693,
213.745

 44, 67.293, 39.738

 42, 75.653, 41.137

 95, 20.249,
201.787

 41, 81.254, 42.037

 96, 21.055,
198.121

Harmonies

Complementary

The Complementary color scheme is a pair of colors which are on the opposite of each other on the color wheel.



67, 14.481, 33.702



73, 12.513, 213.724

Rectangle

The Rectangle color scheme consists of four colors that form a rectangle on the color wheel.



67, 14.481, 33.702



67, 14.481, 83.702



67, 14.481, 213.702



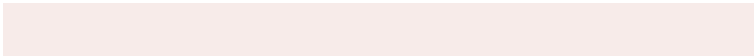
67, 14.481, 263.702

Sweetspot

The Sweet Spot groups the original color and five complimentary colors.



67, 14.480, 33.711



94, 4.679, 33.351



67, 24.813, 329.574



50, 3.137, 33.370



99, 0.012, 296.813



52, 0.007, 296.813

Same Dimension

The Same Dimension uses a secret algorithm to generate beautiful new colors.



67, 14.480, 33.711



82, 22.055, 33.873



72, 15.322, 85.607



37, 3.595, 33.429



34, 70.446, 42.174



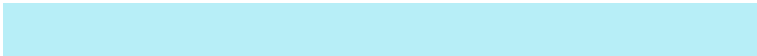
3, 11.132, 28.744

Inverse Universe

The Inverse Universe completely reimagines the original color for something new.



73, 12.513, 213.724



91, 18.367, 213.852



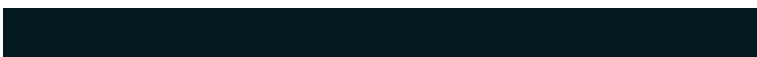
67, 15.114, 271.505



39, 3.387, 213.585



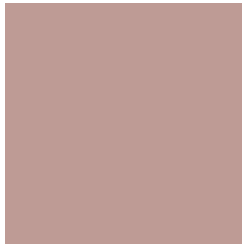
52, 30.526, 223.523



8, 9.770, 219.080

Previews

White Background



This preview shows how the CIELCh color 67, 14.481, 33.702 looks on a white background.

Color Contrast Check

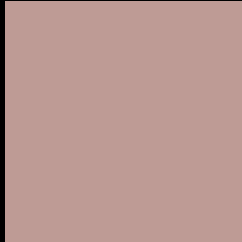
Large Text (above 18pt) WCAG AA × Fail

Any Text WCAG AA × Fail

Large Text (above 18pt) WCAG AAA × Fail

Any Text WCAG AAA × Fail

Black Background



This preview shows how the CIELCh color 67, 14.481, 33.702 looks on a black background.

Color Contrast Check

Large Text (above 18pt) WCAG AA ✓ Pass

Any Text WCAG AA ✓ Pass

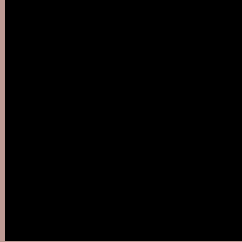
Large Text (above 18pt) WCAG AAA ✓ Pass

Any Text WCAG AAA ✓ Pass

If you want to check with other color combinations, try the [Color Contrast Checker](#).

CIELCh 67, 14.481, 33.702

Background



This preview shows how black text looks on a background with the CIELCh color 67, 14.481, 33.702.



This preview shows how white text looks on a background with the CIELCh color 67, 14.481, 33.702.

Color Blindness Simulation

Color vision deficiency is a very complex topic, and I could not describe the different causes any better than Wikipedia does, so if you want to learn more, you should check out their [article about color blindness](#).

Dichromacy



Original Color

67, 14.481, 33.702

Protanopia

67, 5.965, 86.437

Deuteranopia

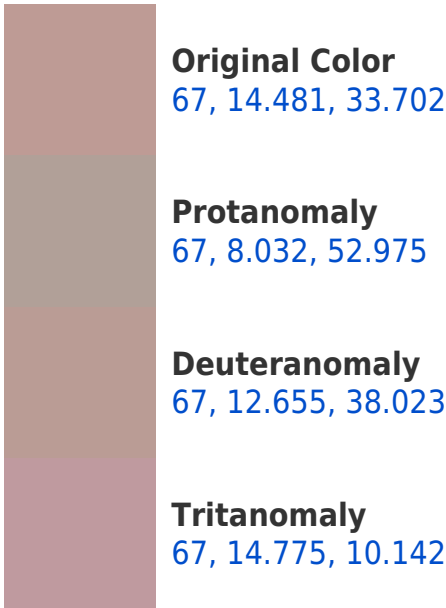
67, 11.695, 42.262



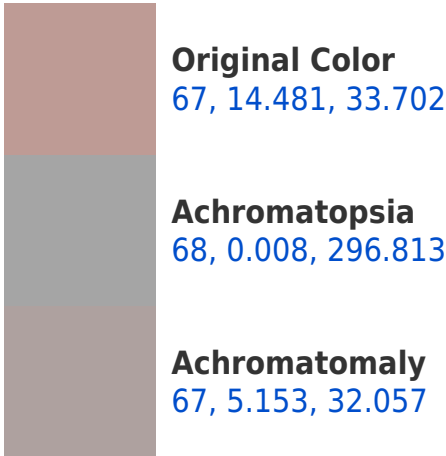
Tritanopia

67, 16.466, 357.468

Trichromacy



Monochromacy



CSS Examples

Text

The CSS property to change the color of the text to CIELCh 67, 14.481, 33.702 is called "color". The color property can be set on classes, ids or directly on the HTML element.

This example shows how text in the color `rgb(190, 155, 149)` looks like.

```
.text, #text, p{  
    color:rgb(190, 155, 149)  
}
```

If you want to add a text shadow in that color use the text-shadow property, you can generate a text shadow directly with our [CSS Text Shadow Generator](#).

Here you see how black text with a 4 pixel rgb(190, 155, 149) colored shadow looks like.

```
.shadow{ text-shadow: 4px 4px 2px rgb(190, 155, 149) }
```

Border

The CSS property to change the border of an element to CIELCh 67, 14.481, 33.702 is called "border". The border property can be set on classes, ids or directly on the HTML element.

This example shows the color as border, it can be applied via the CSS property "border" or "border-color".

```
.border, #border, table{ border:4px solid rgb(190, 155, 149) }
```

If only the border color should be changed use the property border-color.

```
.border{ border-color:rgb(190, 155, 149) }
```

If you want to add a box shadow in that color use:

Here you see how a box with a 4 pixel rgb(190, 155, 149) colored shadow looks like.

```
.boxshadow{ -moz-box-shadow:4px 4px 4px  
4px rgb(190, 155, 149); -webkit-box-  
shadow:4px 4px 4px 4px rgb(190, 155, 149);  
box-shadow:4px 4px 4px 4px rgb(190, 155,  
149) }
```

Background

The CSS property to change the background color of an element to CIELCh 67, 14.481, 33.702 is called "background". The background property can be set on classes, ids or directly on the HTML element.

```
.background, #background, body{  
background: rgb(190, 155, 149) }
```

If only the background color should be changed can be used:

```
.background{ background-color: rgb(190,  
155, 149) }
```

This example shows the color as background, it is applied via the CSS property "background".

To optimize and compress your CSS code, you can use our [online CSS compressor and optimizer](#) based on csstidy. If you want to create a linear or radial gradient as background or border, check our [CSS Gradient Generator](#).

Hey! You found this booklet
interesting? Support Converting
Colors with the new Membership
Option!

The pro membership hides all ads, plus gives you
double the colors in the color bucket, and more
awesome pro features!

[Learn more, Memberships starting at \\$2.50/m!](#)

**Follow me
on Twitter!**

@ConvertingColor